



Chipsmall Limited consists of a professional team with an average of over 10 year of expertise in the distribution of electronic components. Based in Hongkong, we have already established firm and mutual-benefit business relationships with customers from,Europe,America and south Asia,supplying obsolete and hard-to-find components to meet their specific needs.

With the principle of “Quality Parts,Customers Priority,Honest Operation,and Considerate Service”,our business mainly focus on the distribution of electronic components. Line cards we deal with include Microchip,ALPS,ROHM,Xilinx,Pulse,ON,Everlight and Freescale. Main products comprise IC,Modules,Potentiometer,IC Socket,Relay,Connector.Our parts cover such applications as commercial,industrial, and automotives areas.

We are looking forward to setting up business relationship with you and hope to provide you with the best service and solution. Let us make a better world for our industry!



## Contact us

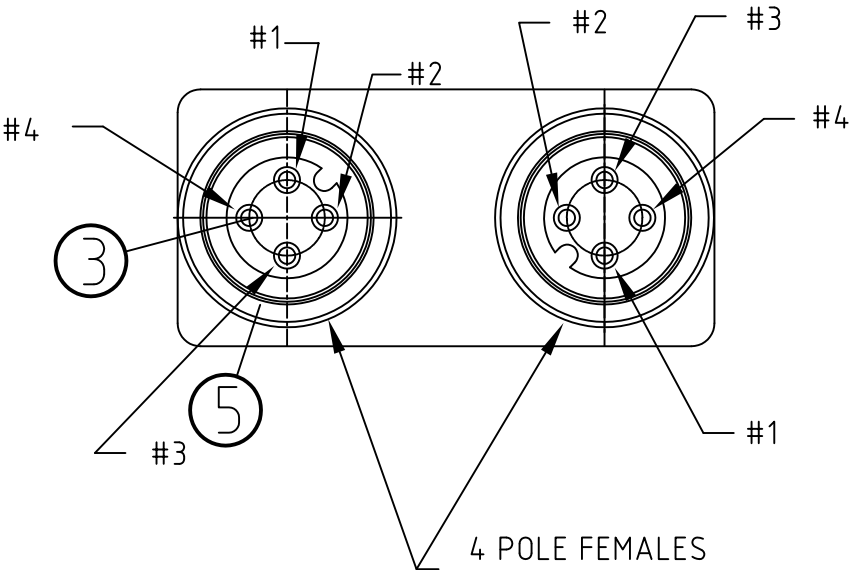
Tel: +86-755-8981 8866 Fax: +86-755-8427 6832

Email & Skype: [info@chipsmall.com](mailto:info@chipsmall.com) Web: [www.chipsmall.com](http://www.chipsmall.com)

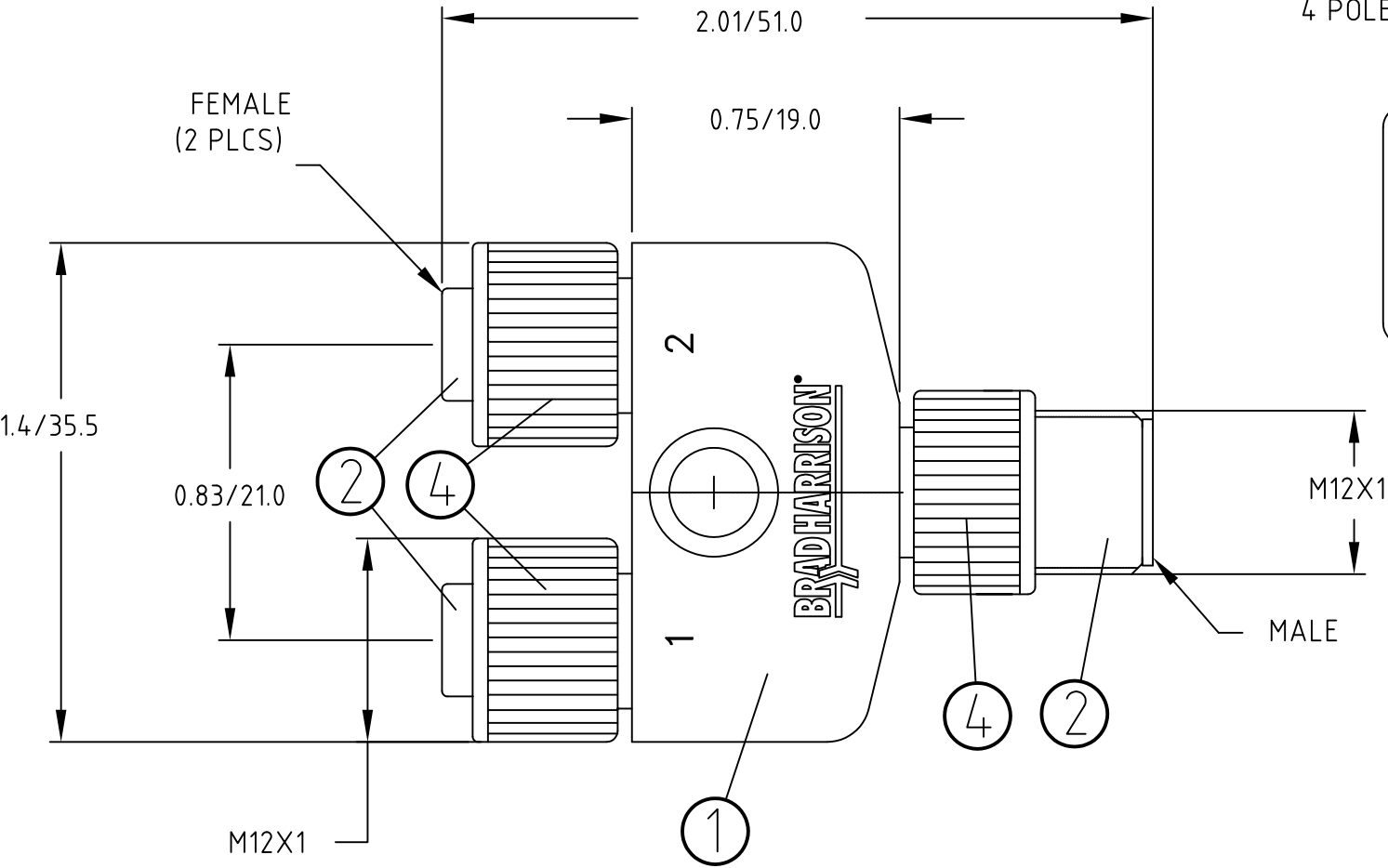
Address: A1208, Overseas Decoration Building, #122 Zhenhua RD., Futian, Shenzhen, China



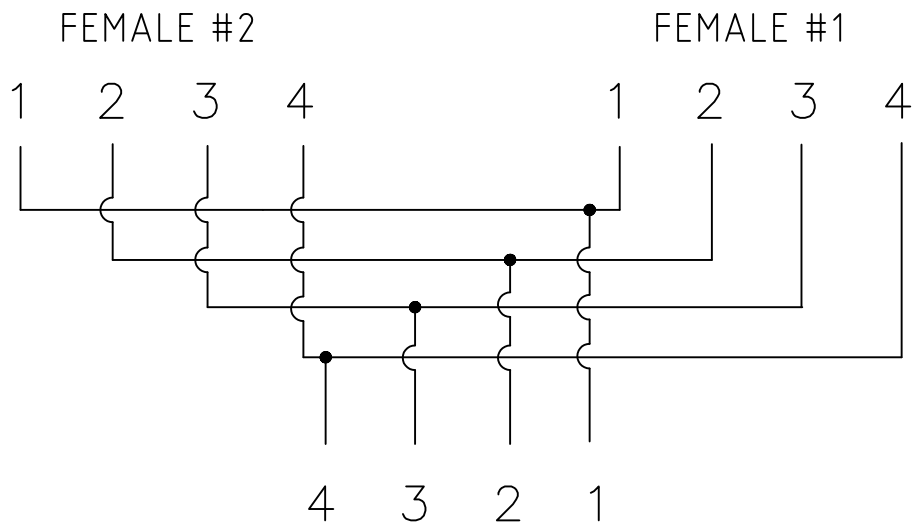
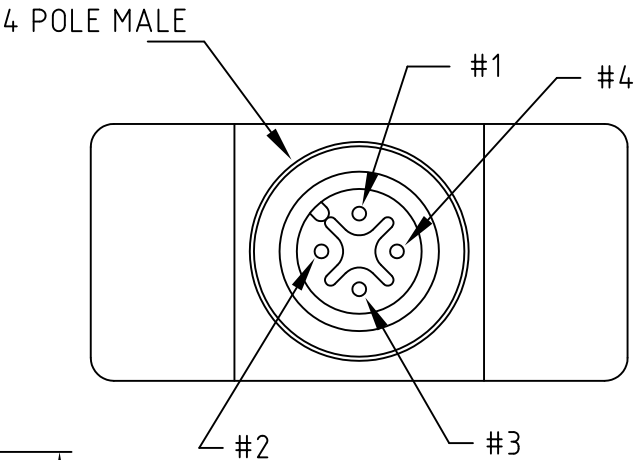
FRONT VIEW



FEMALE  
(2 PLCS)



FRONT VIEW



MALE  
WIRE DIAGRAM

ITEM	COMPONENT	MATERIAL	FINISH
5	O-RING	VITON	RED
4	COUPLER	BRASS	NICKEL PLATED
3	PIN CONTACT	COPPER ALLOY	GOLD OVER NICKEL
2	INSERT	PUR	BLACK
1	OVERMOLD	TPE	BLACK

MATERIAL NUMBER	ENGINEERING NUMBER
1200680228	81589R

DESCRIPTION EC NO: WEU2010-0371 DRWN: BBRAUCH 2010/02/17 CHK'D: NS APPR: NSTAUDIG 2010/02/24	QUALITY SYMBOLS <div>▽ = 0</div> <div>▽C = 0</div>	GENERAL TOLERANCES (UNLESS SPECIFIED)			DIMENSION STYLE		SCALE	DESIGN UNITS	THIRD ANGLE PROJECTION		
					IN/MM		2:1	METRIC			
					DRAWN BY	DATE	M12TV-5P-M/FE-FE ----- -----				
					BBRAUCH	2010/02/17					
					CHECKED BY	DATE					
					NS	2010/02/18	MOLEX INCORPORATED				
					APPROVED BY	DATE					
					NSTAUDIG	2010/02/18					
					MATERIAL NO.		DOCUMENT NO.		SHEET NO.		
					SEE TABLE		SD-120068-035		1 OF 1		
			SIZE	THIS DRAWING CONTAINS INFORMATION THAT IS PROPRIETARY TO MOLEX INCORPORATED AND SHOULD NOT BE USED WITHOUT WRITTEN PERMISSION							
			A3								
1	REV	DRAFT WHERE APPLICABLE MUST REMAIN WITHIN DIMENSIONS									