



Chipsmall Limited consists of a professional team with an average of over 10 year of expertise in the distribution of electronic components. Based in Hongkong, we have already established firm and mutual-benefit business relationships with customers from,Europe,America and south Asia,supplying obsolete and hard-to-find components to meet their specific needs.

With the principle of “Quality Parts,Customers Priority,Honest Operation,and Considerate Service”,our business mainly focus on the distribution of electronic components. Line cards we deal with include Microchip,ALPS,ROHM,Xilinx,Pulse,ON,Everlight and Freescale. Main products comprise IC,Modules,Potentiometer,IC Socket,Relay,Connector.Our parts cover such applications as commercial,industrial, and automotives areas.

We are looking forward to setting up business relationship with you and hope to provide you with the best service and solution. Let us make a better world for our industry!



Contact us

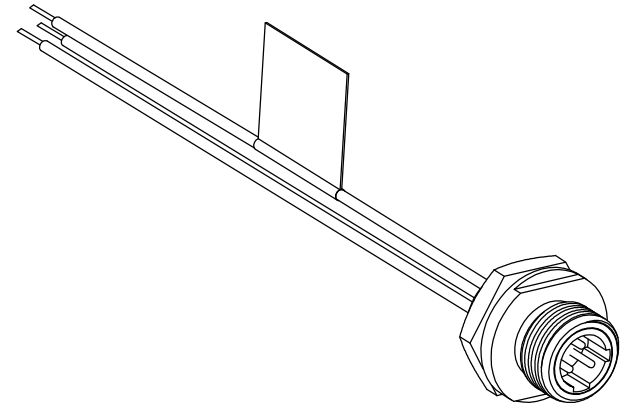
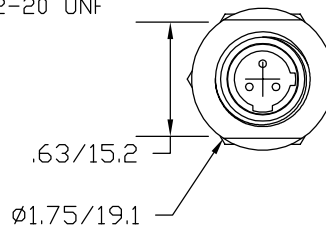
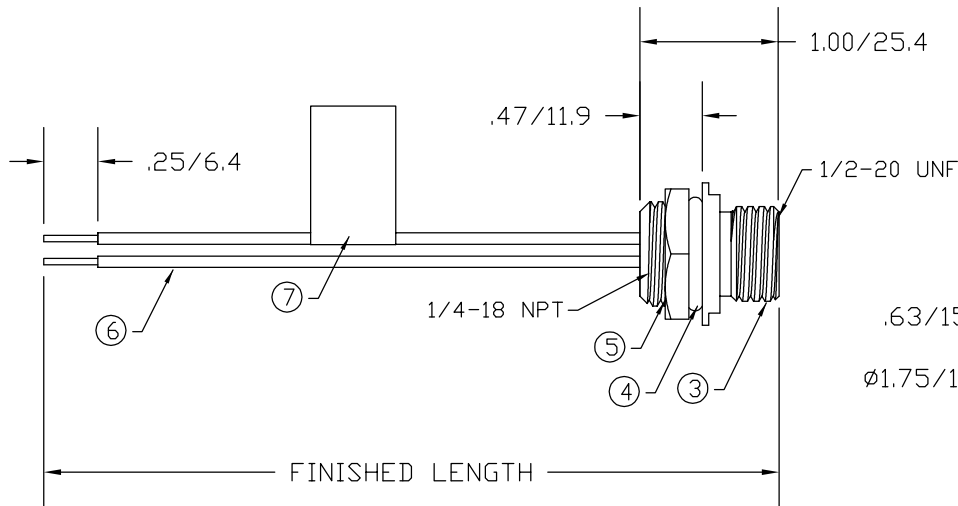
Tel: +86-755-8981 8866 Fax: +86-755-8427 6832

Email & Skype: info@chipsmall.com Web: www.chipsmall.com

Address: A1208, Overseas Decoration Building, #122 Zhenhua RD., Futian, Shenzhen, China

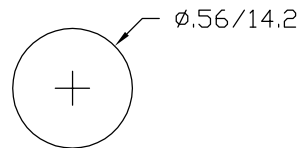


MATERIAL NUMBER	OLD PART NUMBER	FINISHED LENGTH
120074-0079	7R3A06A19A120	12.0" +.75" -0 [3M +19.1 -0]
120074-0081	7R3A06A19F060	6.0" +3.50" -0 [1.8M +88.9 -0]



1	GREEN
2	RED-BLACK
3	RED-WHITE

WIRING DIAGRAM



VOLTAGE RATING	250 VAC/VDC
AMPERAGE RATING	4 AMPS
PROTECTION	IP67
OPERATING TEMPERATURE	-20°C TO 80°C
UL CERTIFICATIONS	UL LISTED, FILE NO. E152210
CSA CERTIFICATIONS	CSA CERTIFIED, FILE NO. LR6837

ITEM	COMPONENT	MATERIAL	FINISH
1	INSERT	NYLON	BLACK
2	CONTACT PIN	COPPER ALLOY	GOLD OVER NICKEL
3	RECEPTACLE SHELL	ALUMINUM	GRAY ANODIZED
4	O-RING	NITRILE	BLACK
5	LOCKNUT	STEEL	ZINC PLATED
6	CONDUCTOR -22 AWG, 26 x #36 STRANDING, 300 VOLTS	PVC	SEE WIRING DIAGRAM
7	FLAG LABEL	MYLAR	BLACK/YELLOW

RLSD DRAWING	3/27/09	1
EC NO: WNA2009-0631	DRWN: BWOODMAN	CHKD: JM
APPR: JFMURPHY	2009/04/01	REV
A		

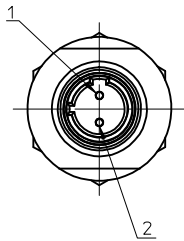
QUALITY SYMBOLS
▽=0
▽=0

GENERAL TOLERANCES (UNLESS SPECIFIED)		
	mm	INCH
4 PLACES	±.005	±.0005
3 PLACES	±.005	±.0005
2 PLACES	±.005	±.0005
1 PLACE	±0.005	±.0005
ANGULAR ±.005°		
DRAFT WHERE APPLICABLE MUST REMAIN WITHIN DIMENSIONS		

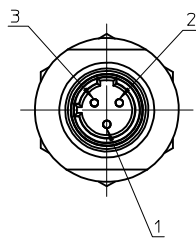
DIMENSION STYLE	
IN/MM	
DRAWN BY	DATE
BW	2009/03/27
CHECKED BY	DATE
TW	2009/03/27
APPROVED BY	DATE
---	---
MATERIAL NO.	
SEE CHART	
SIZE	A

SCALE	DESIGN UNITS	THIRD ANGLE PROJECTION
---	---	---
TITLE		
MICRO-CHANGE RECEPTACLE 3 POLE MALE 1/4-18 NPT		
MOLEX INCORPORATED		
DOCUMENT NO.	SHEET NO.	
SD-120074-001	1 OF 1	
THIS DRAWING CONTAINS INFORMATION THAT IS PROPRIETARY TO MOLEX INCORPORATED AND SHOULD NOT BE USED WITHOUT WRITTEN PERMISSION		

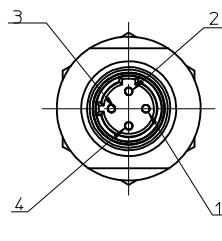
FACE VIEW - MALE INSERT SCALE 2 : 1



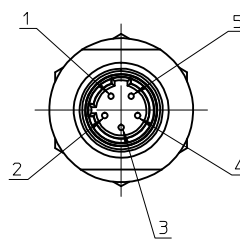
1 BROWN
2 BLUE



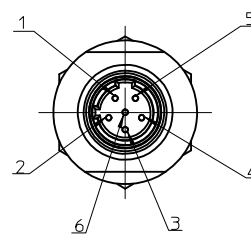
1 GREEN
2 RED/BLACK
3 RED/WHITE



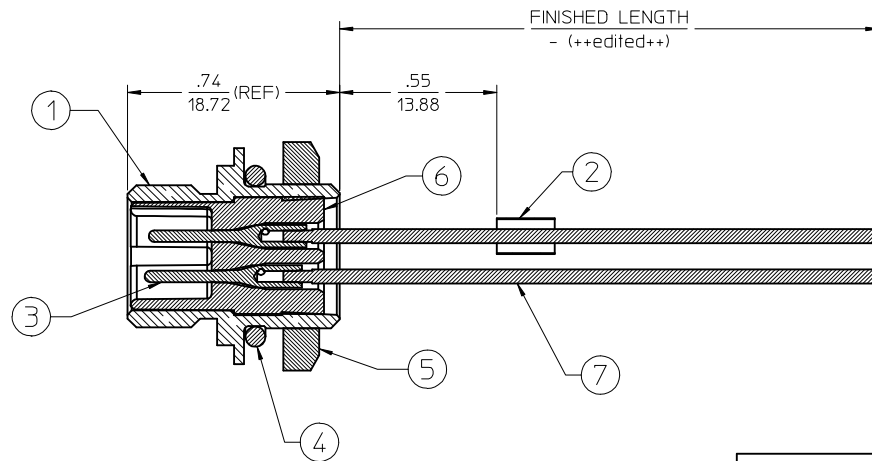
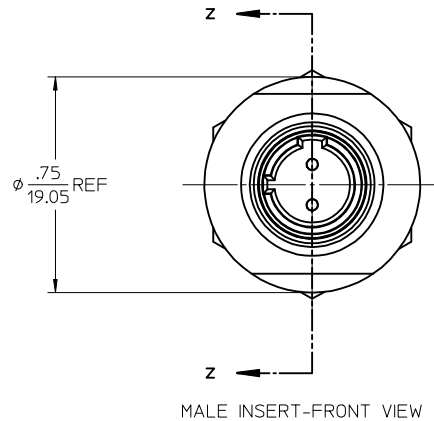
1 RED/BLACK
2 RED/WHITE
3 RED
4 GREEN



1 RED/WHITE
2 RED
3 GREEN
4 RED/YELLOW
5 RED/BLACK



1 RED/WHITE
2 RED
3 GREEN
4 RED/YELLOW
5 RED/BLACK
6 RED/BLUE



FINAL ASSEMBLY
1200740030 (SHOWN)

<div>ENTER DESCRIPTION</div> <div>EC NO: WNA2010-0078</div> <div>DRAWN BY: NKUMAR01</div> <div>CHKD: JFJ</div> <div>APPR: JFMURPHY</div> <div>DATE: 2009/08/26</div> <div>DATE: 2009/08/27</div> <div>DATE: 2009/08/28</div> <div>A</div>	<div>DESCRIPTION</div> <div>REV</div>	<div>QUALITY SYMBOLS</div> <div>▽=0</div> <div>▽=0</div>	GENERAL TOLERANCES (UNLESS SPECIFIED)		DIMENSION STYLE		SCALE	DESIGN UNITS	<div>THIRD ANGLE PROJECTION</div>	
					IN/MM		2:1	INCH		
				mm	INCH	DRAWN BY	DATE	TITLE		
			4 PLACES	± ---	± ---	NKUMAR01	26/08/09			
			3 PLACES	± ---	± ---	CHECKED BY	DATE			
			2 PLACES	± ---	± ---	BWOODMAN	26/08/09			
			1 PLACE	± ---	± ---	APPROVED BY	DATE			
			ANGULAR ±1/2°		JFMURPHY		2009/08/27	MOLEX INCORPORATED		
			DRAFT WHERE APPLICABLE MUST REMAIN WITHIN DIMENSIONS		MATERIAL NO.		DOCUMENT NO.			SHEET NO.
					SEE SHEET 2		SD-120074-030			1 OF 2
THIS DRAWING CONTAINS INFORMATION THAT IS PROPRIETARY TO MOLEX INCORPORATED AND SHOULD NOT BE USED WITHOUT WRITTEN PERMISSION										

J

I

H

G

F

E

D

C

B

A

J

I

H

G

F

E

D

C

B

A

		MALE RECEPTACLE ASSEMBLY				
		2 POLE	3 POLE	4 POLE	5 POLE	6 POLE
Sl. No.	DESCRIPTION	QUANTITY				
1	RECEPTACLE SHELL #1/4-18 NPT	1	1	1	1	1
2	LABEL,SELF L,YELLOW(2.25X.75IN)	1	1	1	1	1
3	PIN CONT 2-4P MIC GLD #22AWG	2	3	4		
	PIN CONT 5&6P MICGLD #22AWG				5	6
4	O-RING .489 ID X .070 THK	1	1	1	1	1
5	#1/4-18IN NPS LOCKNUT	1	1	1	1	1
6	MIC 2P MALE INSERT (NYLON)	1				
	MIC 3P MALE INSERT (NYLON)		1			
	MIC 4P MALE INSERT (NYLON)			1		
	MIC 5P MALE INSERT (NYLON)				1	
	MIC 6P MALE INSERT (NYLON)					1
7	#22-1 BLU PVC WIRE UL1061	1				
	#22-1 GRN PVC WIRE UL1061		1	1	1	1
	#22-1 BRN PVC WIRE UL1061	1				
	#22-1 RED PVC WIRE UL1061			1	1	1
	#22-1 RED/WHT PVC WIRE UL1061		1	1	1	1
	#22-1 RED/BLK PVC WIRE UL1061		1	1	1	1
	#22-1 RED/BLU PVC WIRE UL1061					1
	#22-1 RED/YEL PVC WIRE UL1061				1	1

PART NUMBER	DESCRIPTION	FINISHED LENGTH
1200740030	7R2A06A19A120	12.0" +.75" -0 [0.3M +19.1MM -0]
1200740079	7R3A06A19A120	12.0" +.75" -0 [0.3M +19.1MM -0]
1200740140	7R4A06A19A120	12.0" +.75" -0 [0.3M +19.1MM -0]
1200740190	7R5A06A19A120	12.0" +.75" -0 [0.3M +19.1MM -0]
1200740241	7R6A06A19A120	12.0" +.75" -0 [0.3M +19.1MM -0]

ENTER DESCRIPTION EC NO: WNA2010-0078 DRAWN: NKUMAR01 CHKD: 2009/08/27 APPR: JFMURPHY 2009/08/28 A	QUALITY SYMBOLS ▽=0 ▽=0	GENERAL TOLERANCES (UNLESS SPECIFIED)		DIMENSION STYLE IN/MM		SCALE 2:1	DESIGN UNITS INCH	THIRD ANGLE PROJECTION	
			mm	INCH	DRAWN BY NKUMAR01	DATE 26/08/09	TITLE MIC 2P MR 12IN. 1/4NPT #22 PVC		
		4 PLACES	± ---	± ---	CHECKED BY BWOODMAN	DATE 26/08/09			
		3 PLACES	± ---	± ---	APPROVED BY JFMURPHY	DATE 2009/08/27	MOLEX INCORPORATED		
		2 PLACES	± ---	± ---	MATERIAL NO.		DOCUMENT NO.		SHEET NO.
		1 PLACE	± ---	± ---	SEE CHART		SD-120074-030		2 OF 2
		ANGULAR ±1/2°			SIZE C		THIS DRAWING CONTAINS INFORMATION THAT IS PROPRIETARY TO MOLEX INCORPORATED AND SHOULD NOT BE USED WITHOUT WRITTEN PERMISSION		
		DRAFT WHERE APPLICABLE MUST REMAIN WITHIN DIMENSIONS							