



Chipsmall Limited consists of a professional team with an average of over 10 year of expertise in the distribution of electronic components. Based in Hongkong, we have already established firm and mutual-benefit business relationships with customers from,Europe,America and south Asia,supplying obsolete and hard-to-find components to meet their specific needs.

With the principle of "Quality Parts,Customers Priority,Honest Operation,and Considerate Service",our business mainly focus on the distribution of electronic components. Line cards we deal with include Microchip,ALPS,ROHM,Xilinx,Pulse,ON,Everlight and Freescale. Main products comprise IC,Modules,Potentiometer,IC Socket,Relay,Connector.Our parts cover such applications as commercial,industrial, and automotives areas.

We are looking forward to setting up business relationship with you and hope to provide you with the best service and solution. Let us make a better world for our industry!



Contact us

Tel: +86-755-8981 8866 Fax: +86-755-8427 6832

Email & Skype: info@chipsmall.com Web: www.chipsmall.com

Address: A1208, Overseas Decoration Building, #122 Zhenhua RD., Futian, Shenzhen, China



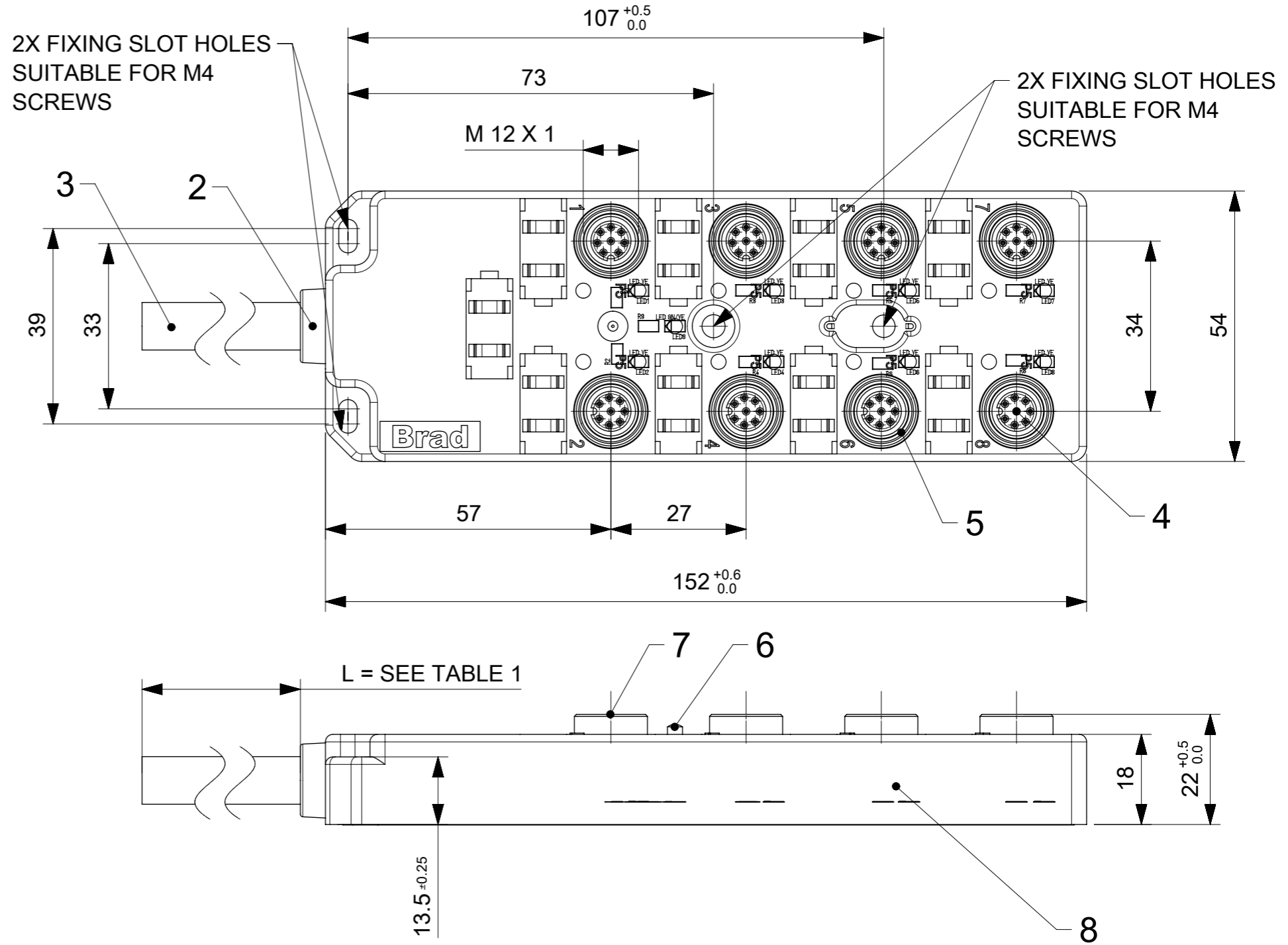
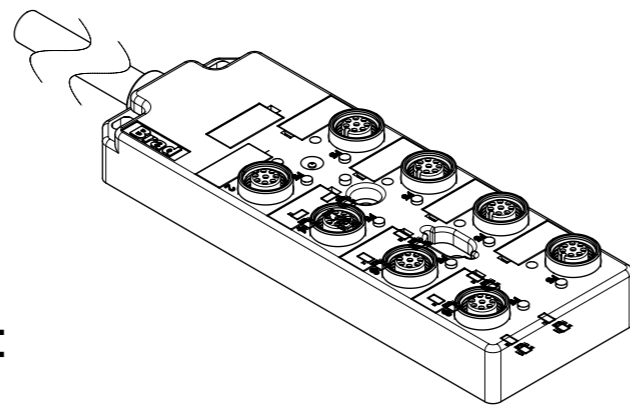
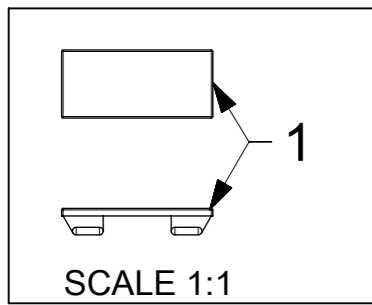
TABLE 1

MOLEX P/N	ENG. NO.	CABLE LENGTH (mm)
1202480510	BTR831P-FBW-05	5000
1202480511	BTR831P-FBW-10	10000
1202480512	BTR831P-FBW-15	15000

TABLE 2: BILL OF MATERIAL

ITEM	DESCRIPTION	MATERIAL	FINISH
1	LABEL	ABS	WHITE
2	CABLE PLATE	PBT	RED
3	CABLE	TPU BASED	BLACK
4	CONTACT	BRONZE	GOLD OVER NICKEL
5	O-RING	FPM	RED
6	SHELL	PA	TRANSPARENT
7	SHELL	BRASS	NICKEL PLATED
8	HOUSING	PBT	RED

PACKED IN BAG (9X)



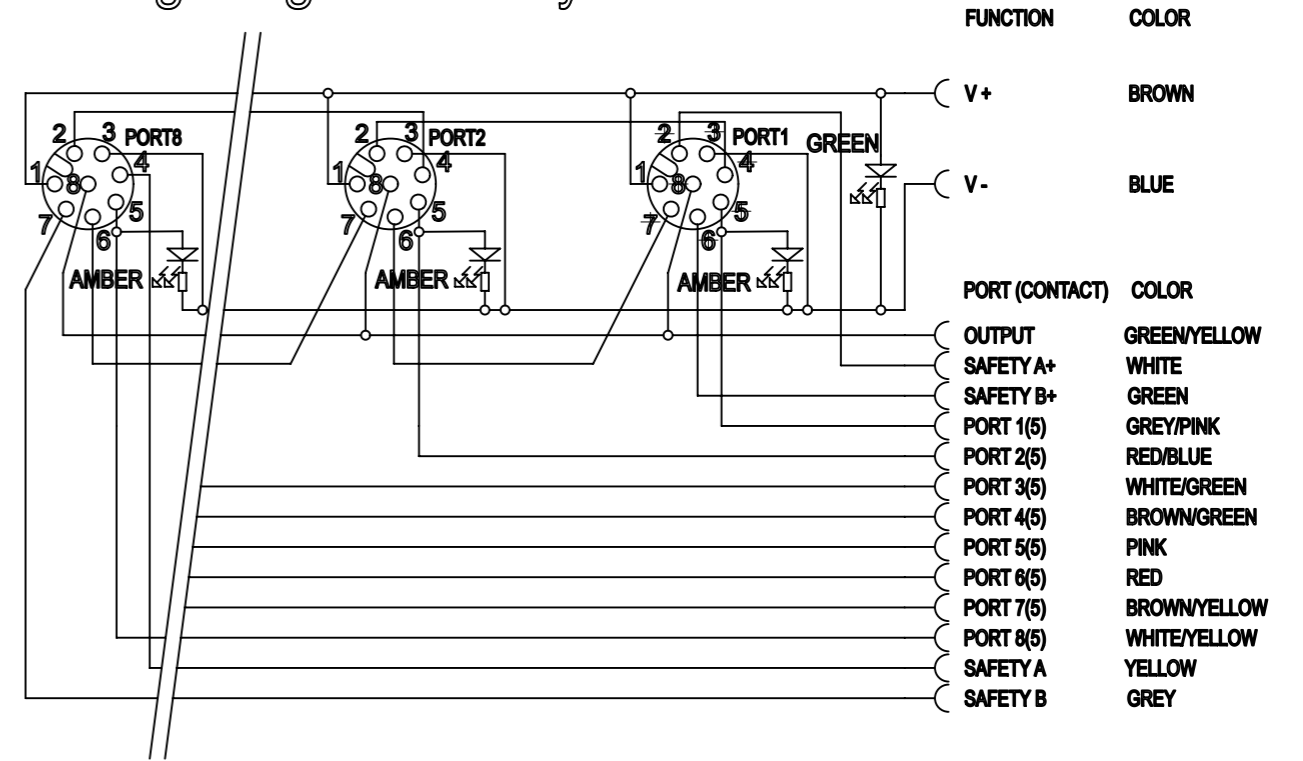
GENERAL CHARACTERISTICS:

ELECTRICAL AND MECHANICAL DATA ACC. TO IEC 61076-2-101

NOMINAL VOLTAGE: 10-30 V DC
 AMPERE RATING: 4 A PER PORT / 12 A MAX
 AMPERE RATING WITH UL REGISTRATION: 3 A PER PORT / 9 A MAX
 IP DEGREE OF PROTECTION: IP 67
 TEMPERATURE RANGE: -25°C to + 85°C

THIS DRAWING CONTAINS INFORMATION THAT IS PROPRIETARY TO MOLEX INCORPORATED AND SHOULD NOT BE USED WITHOUT WRITTEN PERMISSION									
EC DESCRIPTION EC NO: 104548 DRWN: ULETTENMEIER 2016/04/26 CHK'D: REV APPR: CBRUNS 2016/04/26	QUALITY SYMBOLS	GENERAL TOLERANCES (UNLESS SPECIFIED)	DIMENSION UNITS	SCALE					
	▽ = 0	ANGULAR TOL ± °	MM	1:1					
	∇ = 0	4 PLACES ±	DRWN BY	DATE	MPIS M12 SAFETY STA PNP NPN NOS 8P 8PT AC FE STA RD XM SINGLE				
	∇ = 0	3 PLACES ±	ULETTENMEIER	2015/05/06					
▼ = 0	2 PLACES ±	CHK'D BY	DATE	PRODUCT CUSTOMER DRAWING					
∇ = 0	1 PLACE ±	APPR BY	DATE						
⊠ = 0	0 PLACES ± 0.25	RSILLER	2015/12/23	SERIES	MATERIAL NUMBER	CUSTOMER			
■ = 0	DRAFT WHERE APPLICABLE MUST REMAIN WITHIN DIMENSIONS	DRAWING SIZE	THIRD ANGLE PROJECTION	120248	SEE TABLE 1	GENERAL MARKET			
∇ = 0		A3		DOCUMENT NUMBER	DOC TYPE	DOC PART	SHEET NUMBER		
				1202480510	PSD	000	1 OF 2		

Wiring Diagram Safety Wired



QUALITY SYMBOLS ▽ = 0 ▽ = 0 ▽ = 0 ▼ = 0 ▽ = 0 ☒ = 0 ■ = 0 ▽ = 0	THIS DRAWING CONTAINS INFORMATION THAT IS PROPRIETARY TO MOLEX INCORPORATED AND SHOULD NOT BE USED WITHOUT WRITTEN PERMISSION										
	EC DESCRIPTION EC NO: 104548 DRWN: ULETTENMEIER CHK'D: APPR: CBRUNS	2016/04/26		2016/04/26		GENERAL TOLERANCES (UNLESS SPECIFIED)		DIMENSION UNITS		SCALE	
		ANGULAR TOL ± °		MM				DRWN BY		DATE	
		4 PLACES ±		ULETTENMEIER		2015/05/06		CHK'D BY		DATE	
		3 PLACES ±		RSILLER		2015/12/23		APPR BY		DATE	
		2 PLACES ±		DRAWING SIZE		THIRD ANGLE PROJECTION		SAFETY A		SAFETY B	
	1 PLACE ±		A3				SAFETY A		SAFETY B		
	0 PLACES ± 0.25		DRAFT WHERE APPLICABLE MUST REMAIN WITHIN DIMENSIONS				SERIES		MATERIAL NUMBER		
							120248				
							DOCUMENT NUMBER		DOC TYPE		
						1202480510		PSD			
						CUSTOMER		SHEET NUMBER			
						GENERAL MARKET		2 OF 2			



MPIS M12 SAFETY STA PNP NPN NOS 8P 8PT
AC FE STA RD XM SINGLE

PRODUCT CUSTOMER DRAWING

SERIES	MATERIAL NUMBER	CUSTOMER
120248		GENERAL MARKET

DOCUMENT NUMBER	DOC TYPE	DOC PART	SHEET NUMBER
1202480510	PSD	000	2 OF 2