



Chipsmall Limited consists of a professional team with an average of over 10 year of expertise in the distribution of electronic components. Based in Hongkong, we have already established firm and mutual-benefit business relationships with customers from,Europe,America and south Asia,supplying obsolete and hard-to-find components to meet their specific needs.

With the principle of “Quality Parts,Customers Priority,Honest Operation,and Considerate Service”,our business mainly focus on the distribution of electronic components. Line cards we deal with include Microchip,ALPS,ROHM,Xilinx,Pulse,ON,Everlight and Freescale. Main products comprise IC,Modules,Potentiometer,IC Socket,Relay,Connector.Our parts cover such applications as commercial,industrial, and automotives areas.

We are looking forward to setting up business relationship with you and hope to provide you with the best service and solution. Let us make a better world for our industry!



## Contact us

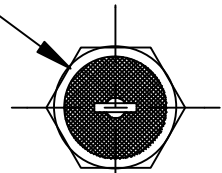
Tel: +86-755-8981 8866 Fax: +86-755-8427 6832

Email & Skype: info@chipsmall.com Web: www.chipsmall.com

Address: A1208, Overseas Decoration Building, #122 Zhenhua RD., Futian, Shenzhen, China



.375 HEX.  
[9.53]



.060 MAX., POTTING HEIGHT  
2 PL. [1.52]



.250 [6.35]      .562 ± .031  
[14.28]

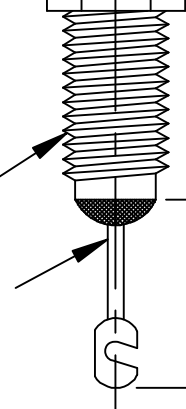


.437 [11.10]

5/16-32UNEF-2A

.750 ± .031  
[19.05]

#15 AWG. (φ.057)



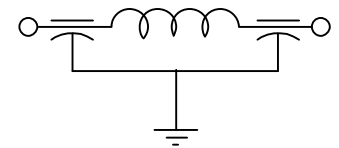
**NOTES:**

SUGGESTED MTG HOLE .328 DIA.  
HARDWARE IS INCLUDED.  
MAXIMUM MOUNTING TORQUE=7LBS-IN  
PRE FLATTEN/NOTCH DIMENSIONS  
TOP-.542±.010  
BOTTOM-.730±.011  
THIS IS A LEAD FREE PRODUCT  
MAX REFLOW IS 245° FOR 5 SEC.

LEAD FINISH: TIN/SILVER	
BUSHING FINISH: SILVER	
CAPACITANCE	3000 pF MIN.
TEMP. RANGE	-55°C/ + 125°C
CURRENT	25 AMP MAX.
WORKING VOLTAGE	125°C 125VAC/400Hz 125°C 500 VDC MAX.
D.C. RESISTANCE	.01ohms MAX.
MIN. I.L. PER MIL-STD-220 AT 25°C NO LOAD	
FREQ. MHz	I.L. (db)
1	---
10	10
100	55
1 GHz	70
10 GHz	70

01

**SCHEMATIC**



**MARKING:**

PART: S1202F 054

BAG: 1202F-054  
XXXX DATE CODE  
XXX QTY./BAG  
(50/ BAG MAX.)

					01	00	REV. NO.	TOLERANCES UNLESS OTHERWISE SPECIFIED
					CN #15200	CN 30462-CPD	CHANGE NOTICE	Fractions ± 1/64
								Dec. .xx±
								Dec. .xxx± .010
								Angles ±0° 30'
								CODE IDENT. NO. DLSP2



FAIRVIEW  
PENNSYLVANIA

Dwn. KRDZALIC	Description
Ckd. 8-17-15	FLTR., SING., Pi, BSHG.
Apvd. B.DEVINE	1202F-054
Scale NONE	