



Chipsmall Limited consists of a professional team with an average of over 10 year of expertise in the distribution of electronic components. Based in Hongkong, we have already established firm and mutual-benefit business relationships with customers from,Europe,America and south Asia,supplying obsolete and hard-to-find components to meet their specific needs.

With the principle of “Quality Parts,Customers Priority,Honest Operation,and Considerate Service”,our business mainly focus on the distribution of electronic components. Line cards we deal with include Microchip,ALPS,ROHM,Xilinx,Pulse,ON,Everlight and Freescale. Main products comprise IC,Modules,Potentiometer,IC Socket,Relay,Connector.Our parts cover such applications as commercial,industrial, and automotives areas.

We are looking forward to setting up business relationship with you and hope to provide you with the best service and solution. Let us make a better world for our industry!



## Contact us

Tel: +86-755-8981 8866 Fax: +86-755-8427 6832

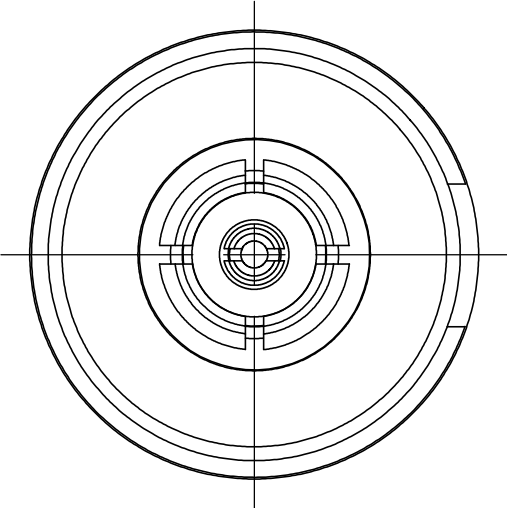
Email & Skype: [info@chipsmall.com](mailto:info@chipsmall.com) Web: [www.chipsmall.com](http://www.chipsmall.com)

Address: A1208, Overseas Decoration Building, #122 Zhenhua RD., Futian, Shenzhen, China



PRODUCT DATA DRAWING

REVISION HISTORY			
REV	DESCRIPTION	DATE	APPROVED
-	REL. NRN 34431	11/29/07	STW
A	DCN 37782	09/10	PJS

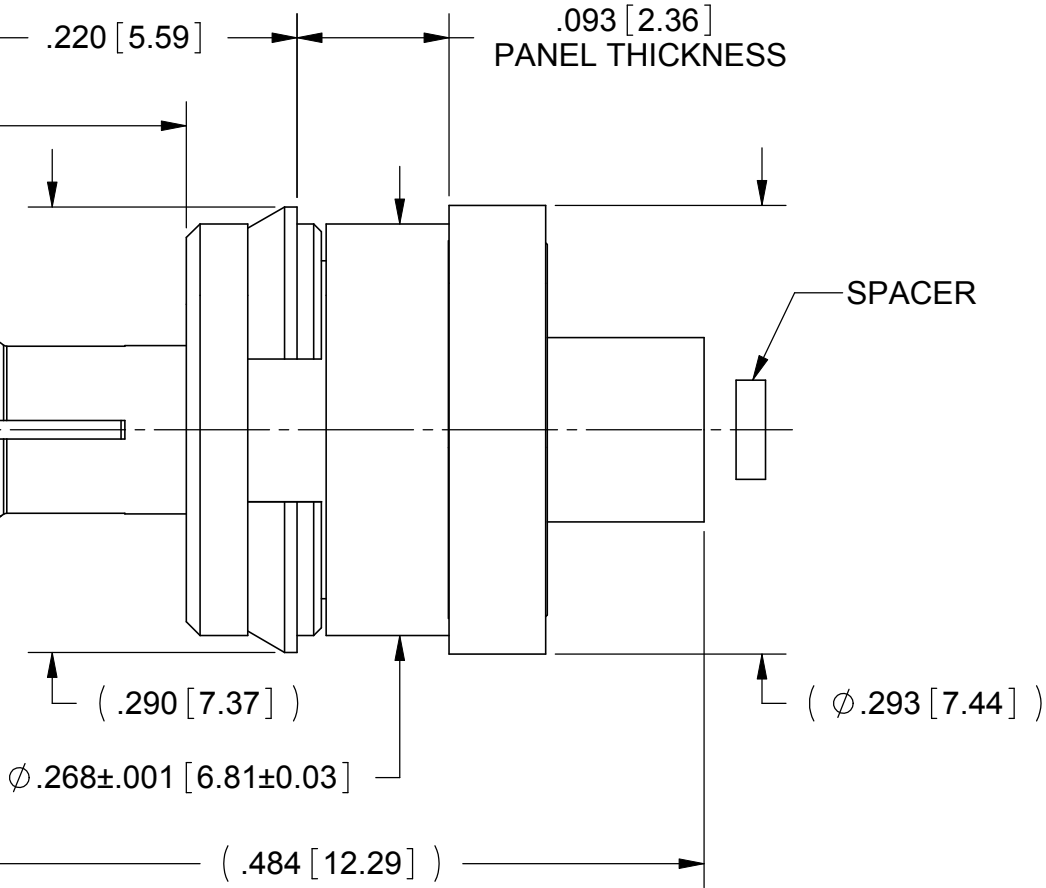


SMP FEMALE  
PER MIL-STD-348

( .150 [ 3.81 ] )

(  $\phi$  .135 [ 3.43 ] MAX. )

RP



MATERIALS:

BODIES, CONTACT & SPRING CLIP: BERYLLIUM COPPER PER ASTM B196  
SLEEVE, & INSERT: STAINLESS STEEL PER AMS 5640, ALLOY No. UNS S30300, TYPE 1  
BUSHING: BRASS PER ASTM B16, ALLOY UNS No. C36000  
SPRING: STAINLESS STEEL PER ASTM A313  
INSULATOR: PTFE PER ASTM D1710  
DIELECTRIC SPACER: TORLON 4203

FINISHES:

BODIES, CONTACT & SPRING CLIP: GOLD PER ASTM B488, TYPE II GRADE C, CLASS 1.27, OVER NICKEL PER AMS-QQ-N-290, CLASS 1  
BUSHING: NICKEL PER AMS-QQ-N-290, CLASS 2  
SLEEVE, INSERT & SPRING: PASSIVATED PER AMS 2700

ELECTRICAL:

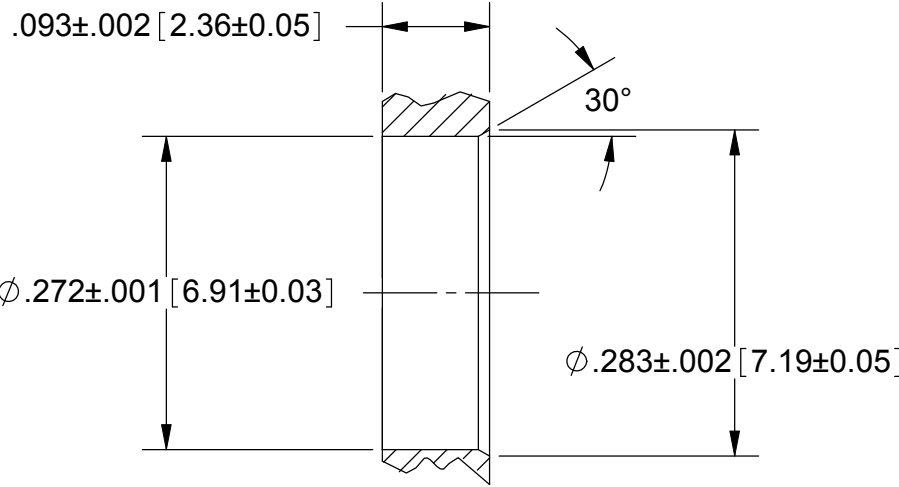
IMPEDANCE: 50 OHMS  
FREQ. RANGE: DC TO 18.0 GHZ  
VSWR: 1.20 MAX.  
INSERTION LOSS: 0.25 dB MAX.  
D.W.V.: 500 VRMS  
INSULATION RES.: 5,000 MEGOHMS MINIMUM

FLOAT:

AXIAL FLOAT: .040 INCH  
RADIAL FLOAT: .020 INCH

SPRING FORCE:

SPRING RATE: 39 LBS/INCH NOM.  
PRE-LOAD: 0.81 LBS NOM.  
.035" COMPRESSION: 2.15 LBS NOM.  
.125" COMPRESSION: 5.6 LBS NOM.



RECOMMENDED MOUNTING HOLE

MATERIAL:	SEE NOTES	DIMENSIONS ARE IN INCHES TOLERANCES:  FRACTIONAL: ±1/64    ANGULAR: X°    ±1°0' 
-----------	-----------	---