



Chipsmall Limited consists of a professional team with an average of over 10 year of expertise in the distribution of electronic components. Based in Hongkong, we have already established firm and mutual-benefit business relationships with customers from,Europe,America and south Asia,supplying obsolete and hard-to-find components to meet their specific needs.

With the principle of “Quality Parts,Customers Priority,Honest Operation,and Considerate Service”,our business mainly focus on the distribution of electronic components. Line cards we deal with include Microchip,ALPS,ROHM,Xilinx,Pulse,ON,Everlight and Freescale. Main products comprise IC,Modules,Potentiometer,IC Socket,Relay,Connector.Our parts cover such applications as commercial,industrial, and automotives areas.

We are looking forward to setting up business relationship with you and hope to provide you with the best service and solution. Let us make a better world for our industry!



## Contact us

Tel: +86-755-8981 8866 Fax: +86-755-8427 6832

Email & Skype: info@chipsmall.com Web: www.chipsmall.com

Address: A1208, Overseas Decoration Building, #122 Zhenhua RD., Futian, Shenzhen, China



DATA DISPLAY PRODUCTS (DDP) PROPRIETARY INFORMATION. DO NOT REPRODUCE, COPY, OR USE WITHOUT EXPRESS WRITTEN PERMISSION. COPYRIGHT DATA DISPLAY PRODUCTS.

REV.	DATE	BY	DESCRIPTION
1	010711	LC	PRELIMINARY

503199

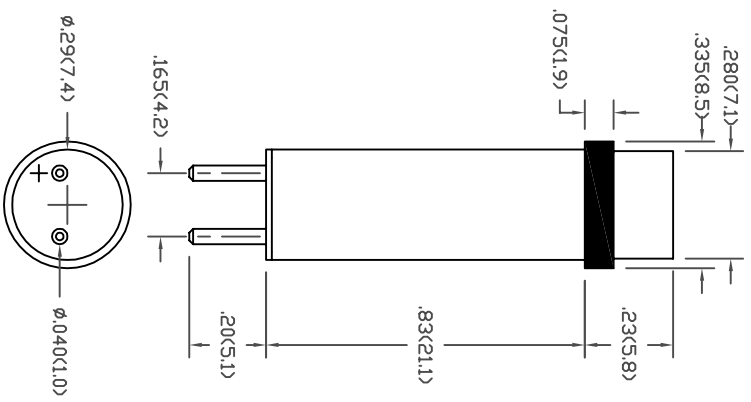
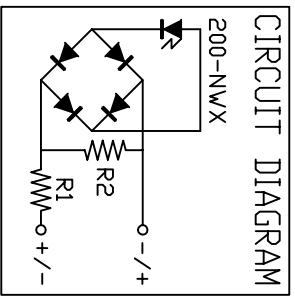
## ELECTRO-OPTICAL CHARACTERISTICS @ T<sub>a</sub> = 25°C


SYM	PARAMETER	X = LED COLOR					UNIT
		RED	AMBER	GREEN	BLUE	WHITE	
I <sub>v</sub>	TYP. LUMINOUS INTENSITY MEASURED W/O LENS @ I <sub>f</sub> =20mA	900	1300	1200	325	1100	mcd
V <sub>o</sub>	OPERATING VOLTAGE	110	110	110	110	110	VAC
I <sub>f</sub>	TYP. FORWARD CURRENT @ V <sub>f</sub> =110VAC	5.8 ~ 6.1					mA
I <sub>mx</sub>	MAX. FORWARD CURRENT @ V <sub>f</sub> =130VAC	7.1	7.1	7.1	7.1	7.1	mA
V <sub>br</sub>	REVERSE BREAKDOWN @ I <sub>r</sub> =100μA	-	-	-	-	-	V
λ <sub>pk</sub>	PEAK WAVELENGTH	635	592	520	465	-	nm
λ <sub>d</sub>	DOMINANT WAVELENGTH	626	590	525	470	-	nm

ABSOLUTE MAX. RATINGS T<sub>a</sub>=25°C

PARAMETER	VALUE			UNIT
	RED & AMB	G, B & W		
POWER DISSIPATION	923	923		mW
DERATE/°C T <sub>a</sub>	13.8	13.8		mW
OPERATING VOLTAGE	130	130		VAC
OPERATING TEMPERATURE	-40<+100	-30<+85		°C
STORAGE TEMPERATURE	-40<+120	-40<+100		°C

- REMARKS:
- Dimensions are in inches(mm).
  - The lens is water-clear with a fresnel pattern.
  - This device is immune to peak noise current of 3mA.
  - Cautions: GAIN LEDs are class 1 ESD sensitive (MIL-STD-1686). Exceeding absolute maximum ratings may cause damage to, or possibly result in catastrophic failure of these devices. Use appropriate ESD precautions during handling and operation.
  - For 200-NW LED chromaticity coordinate range, see drawing #502590.





**Data Display Products**

445 S. DOUGLAS ST., EL SEGUNDO, CA. 90245 (310)640-0442 FAX: (310)640-7639

DATE:	010711	DWN BY:	LC	CHK'D BY:		APPR'V'D BY:	
LAST REV. DATE:	-	REV LEVEL	1	MATERIAL:			

TITLE:	120PCLS-NWX						
SCALE:	NONE	TOL:	.XX(X)	.XXX(XXX)	ANG.		DWG NUMBER:
			± .025(.63)	.010(.25)	-		503199