



Chipsmall Limited consists of a professional team with an average of over 10 year of expertise in the distribution of electronic components. Based in Hongkong, we have already established firm and mutual-benefit business relationships with customers from,Europe,America and south Asia,supplying obsolete and hard-to-find components to meet their specific needs.

With the principle of “Quality Parts,Customers Priority,Honest Operation,and Considerate Service”,our business mainly focus on the distribution of electronic components. Line cards we deal with include Microchip,ALPS,ROHM,Xilinx,Pulse,ON,Everlight and Freescale. Main products comprise IC,Modules,Potentiometer,IC Socket,Relay,Connector.Our parts cover such applications as commercial,industrial, and automotives areas.

We are looking forward to setting up business relationship with you and hope to provide you with the best service and solution. Let us make a better world for our industry!



Contact us

Tel: +86-755-8981 8866 Fax: +86-755-8427 6832

Email & Skype: info@chipsmall.com Web: www.chipsmall.com

Address: A1208, Overseas Decoration Building, #122 Zhenhua RD., Futian, Shenzhen, China



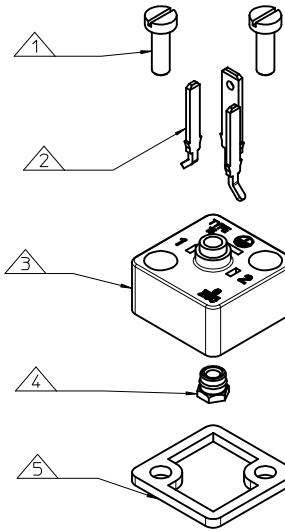
B152000N2

SERIES _____
 B15= FORM C
 POLES _____
 2= 2 POLE & 3= 3 POLE
 CURVED BASE DIAMETER _____
 000= FLAT BOTTOM
 MATERIAL AND HOUSING COLOUR _____
 N= PA6 BLACK
 SCREW AND GASKET _____
 2= NBR FLAT GASKET & SCREWS

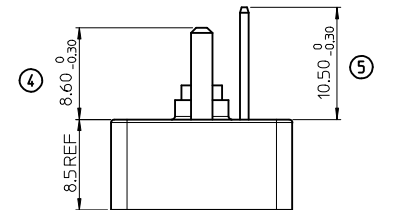
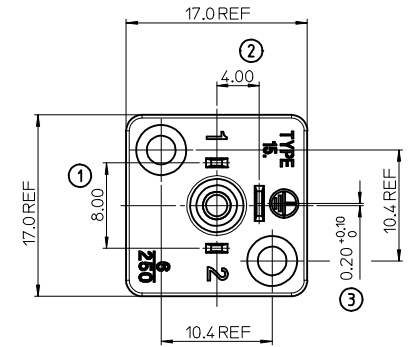
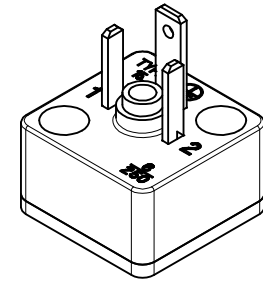
NOTES

- PLEASE SEE TABLE FOR CURRENTLY CONFIGURED PART NUMBERS.
 FOR SPECIFIC PART NUMBERS PLEASE CONTACT SALES OR CONSULT
 THE INTELLIGENT PART NUMBERS IN THE TABLE ATTACHED.
- FOR PACKAGING SEE PACKAGING SPEC PPK-121012-B15
- PRODUCT SPEC: SEE PS-121201-001
- TERMINALS BENT AFTER INSERTION FOR BEND ANGLE SEE TABLE
- 2P+T BASE SHOWN IN DRAWING

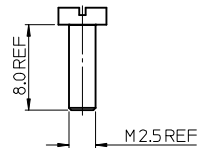
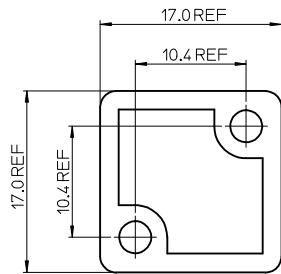
LAST INSPECTION NUMBER 5



ITEM	DESCRIPTION
1	SCREWS
2	TERMINALS
3	HOUSING
4	INSERT
5	GASKET



PART No.	mPm PART No.	DESCRIPTION	TERMINAL BEND ANGLE (°)
1210120009	B152000N2	TYPE C 2P BLACK, NBR FLAT GASKET & SCREWS	45
1210120010	B153000N2	TYPE C 3P BLACK, NBR FLAT GASKET & SCREWS	45



ORIGINAL RELEASE EC NO: IFC2013-1132 2013/01/28 DRWN:DSHEA CHKD:SMGREVY 2013/01/29 APPR:STGRIFFIN 2013/02/08 DESCRIPTION	QUALITY SYMBOLS $\nabla=0$ $\nabla=0$	GENERAL TOLERANCES (UNLESS SPECIFIED) <table border="1"> <thead> <tr> <th></th> <th>mm</th> <th>INCH</th> </tr> </thead> <tbody> <tr> <td>4 PLACES</td> <td>± 0.20</td> <td>± 0.008</td> </tr> <tr> <td>3 PLACES</td> <td>± 0.25</td> <td>± 0.010</td> </tr> <tr> <td>2 PLACES</td> <td>± 0.30</td> <td>± 0.012</td> </tr> <tr> <td>1 PLACE</td> <td>± 0.40</td> <td>± 0.016</td> </tr> </tbody> </table> ANGULAR ± 2 °		mm	INCH	4 PLACES	± 0.20	± 0.008	3 PLACES	± 0.25	± 0.010	2 PLACES	± 0.30	± 0.012	1 PLACE	± 0.40	± 0.016	DIMENSION STYLE MM ONLY	SCALE 3:1	DESIGN UNITS METRIC	THIRD ANGLE PROJECTION
		mm	INCH																		
4 PLACES	± 0.20	± 0.008																			
3 PLACES	± 0.25	± 0.010																			
2 PLACES	± 0.30	± 0.012																			
1 PLACE	± 0.40	± 0.016																			
DRAWN BY OSHEA DATE 2013/01/28 CHECKED BY DATE APPROVED BY STGRIFFIN DATE 2013/02/08 MATERIAL NO. SEE CHART	TITLE B15 SERIES BASES	MOLEX INCORPORATED	DOCUMENT NO. SD-121012-009	SHEET NO. 1 OF 1																	