



Chipsmall Limited consists of a professional team with an average of over 10 year of expertise in the distribution of electronic components. Based in Hongkong, we have already established firm and mutual-benefit business relationships with customers from,Europe,America and south Asia,supplying obsolete and hard-to-find components to meet their specific needs.

With the principle of “Quality Parts,Customers Priority,Honest Operation,and Considerate Service”,our business mainly focus on the distribution of electronic components. Line cards we deal with include Microchip,ALPS,ROHM,Xilinx,Pulse,ON,Everlight and Freescale. Main products comprise IC,Modules,Potentiometer,IC Socket,Relay,Connector.Our parts cover such applications as commercial,industrial, and automotives areas.

We are looking forward to setting up business relationship with you and hope to provide you with the best service and solution. Let us make a better world for our industry!



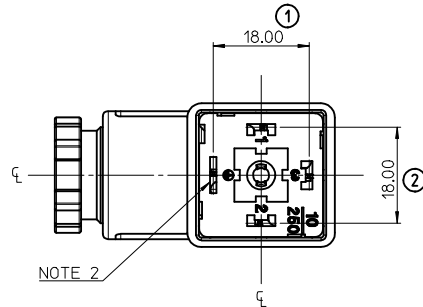
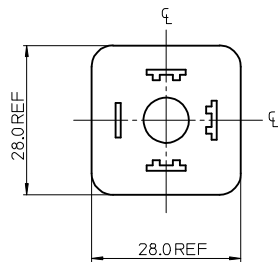
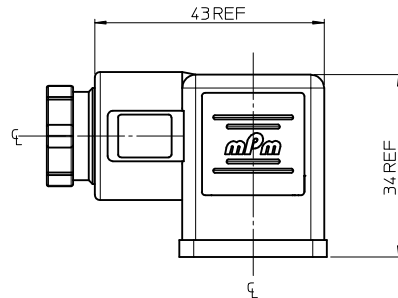
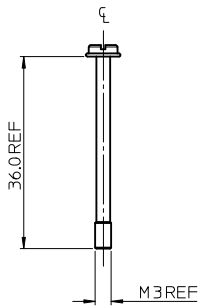
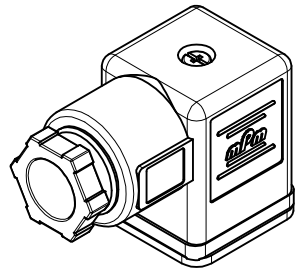
Contact us

Tel: +86-755-8981 8866 Fax: +86-755-8427 6832

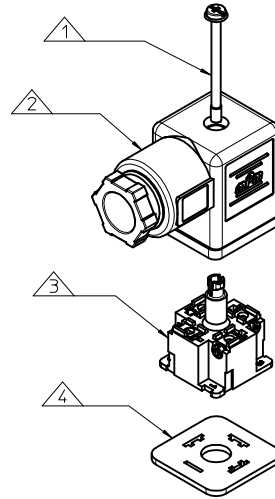
Email & Skype: info@chipsmall.com Web: www.chipsmall.com

Address: A1208, Overseas Decoration Building, #122 Zhenhua RD., Futian, Shenzhen, China





NOTE 2



ITEM	DESCRIPTION
1	SCREW
2	COVER ASSEMBLY
3	INSERT ASSEMBLY
4	GASKET

C81311N62**

SERIES _____
 C81= INTERNAL THREAD FORM A
 POLES _____
 2= 2 POLE, 3= 3 POLE
 THREAD SIZE _____
 09= PG9 11=PG11, 12= 1/2" GAS, M6=M16x1.5, M0=M1201.5
 MATERIAL AND HOUSING COLOUR _____
 G= PA6 GRAY, N= PA6 BLACK, W= PA6 BLACK V0, T= TRANSPARENT
 EARTH POSITION _____
 0= UNMOUNTED, 2= H12, 3= H3, 6= H6, 9= H9

SCREW AND GASKET _____
 1= NBR PROFILE GASKET & SCREW
 2= NBR FLAT GASKET & SCREW
 3= WHITE SILICON PROFILE GASKET & SCREW
 4= WHITE SILICON FLAT GASKET & SCREW
 R= INTEGRATED GASKET & SCREW WITH GROMMET, NOT ASSEMBLED
 G= NO GASKET, STANDARD SCREW

NON STANDARD COMPONENTS _____
 14= SINGLE PACKED IN NEUTRAL BAG

NOTES

- PLEASE SEE SHEET 2 FOR CURRENTLY CONFIGURED PART NUMBERS. FOR SPECIFIC PART NUMBERS PLEASE CONTACT SALES OR CONSULT THE INTELLIGENT PART NUMBERS IN THE TABLE ATTACHED.
- EARTH POSITION SHOWN, H6.
- FOR PACKAGING SEE PACKAGING SPEC PK-121023-C81
- PRODUCT SPEC: SEE PS-121201-001
- P/N 1210230637 SHOWN FOR ILLUSTRATION PURPOSES ONLY

LAST INSPECTION NUMBER 2

ADD P/N EC NO: IPG2015-1444 DRWN:POWNER 2015/02/18 CHKD:DMAHER 2015/02/26 APPR:STGERIEFIN 2015/03/05	DESCRIPTION REV	QUALITY SYMBOLS ▽=0 ▽=0		GENERAL TOLERANCES (UNLESS SPECIFIED) mm INCH 4 PLACES ± --- ± --- 3 PLACES ± --- ± --- 2 PLACES ± 0.10 ± --- 1 PLACE ± 0.20 ± --- ANGULAR ± 2 °		DIMENSION STYLE MM ONLY		SCALE 1.5:1		DESIGN UNITS METRIC		THIRD ANGLE PROJECTION	
		DRAWN BY OSHEA		DATE 2011/05/23		INTERNAL THREAD C81 SERIES							
		CHECKED BY DMAHER		DATE 2011/05/30		MOLEX MOLEX INCORPORATED							
		APPROVED BY EFOLAN		DATE 2011/06/14		MATERIAL NO. SEE SHEET 2		DOCUMENT NO. SD-121023-008		SHEET NO. 1 OF 2			
DRAFT WHERE APPLICABLE MUST REMAIN WITHIN DIMENSIONS				THIS DRAWING CONTAINS INFORMATION THAT IS PROPRIETARY TO MOLEX INCORPORATED AND SHOULD NOT BE USED WITHOUT WRITTEN PERMISSION									

PART NO	mPm NO	DESCRIPTION
1210230618	C81211G21	TYPE A 2P PG11 GRAY, NBR PROFILE GASKET
1210230620	C81211N21	TYPE A 2P PG11 BLACK, NBR PROFILE GASKET
1210230633	C81311N21	TYPE A 3P PG11 BLACK, NBR PROFILE GASKET
1210230808	C81309N2R	TYPE A 3P PG9 BLACK, INTEGRATED NBR GASKET & IP67 SCREW NOT ASSEMBLED
1210230629	C81309N21	TYPE A 3P PG9 BLACK, NBR PROFILE GASKET
1210230627	C81309G21	TYPE A 3P PG9 GRAY, NBR PROFILE GASKET
1210230635	C81311N24	TYPE A 3P PG11 BLACK, WHITE SILICON FLAT GASKET
1210230694	C813M0N21	TYPE A 3P M20x1.5 BLACK, NBR PROFILE GASKET
1210230612	C81209N21	TYPE A 2P PG9 BLACK, NBR PROFILE GASKET
1210230616	C81209N62	TYPE A 2P PG9 BLACK, NBR FLAT GASKET
1210230707	C813M6N21	TYPE A 3P M16x1.5 BLACK, NBR PROFILE GASKET
1210230781	C81312N23	TYPE A 3P 1/2" GAS BLACK, WHITE SILICON PROFILE GASKET
1210230819	C81312N22	TYPE A 3P 1/2" GAS BLACK, NBR FLAT GASKET
1210230637	C81311N62	TYPE A 3P PG11 BLACK, NBR FLAT GASKET
1210230632	C81311G22	TYPE A 3P PG11 GRAY, NBR FLAT GASKET
1210230631	C81311G21	TYPE A 3P PG11 GRAY, NBR PROFILE GASKET
1210230630	C81309N22	TYPE A 3P PG9 BLACK, NBR FLAT GASKET
1210230687	C812M6N21	TYPE A 2P M16x1.5 BLACK, NBR PROFILE GASKET
1210230626	C81212N21	TYPE A 2P 1/2" GAS BLACK, NBR PROFILE GASKET
1210230624	C81211N62	TYPE A 2P PG11 BLACK, NBR FLAT GASKET
1210230623	C81211N24	TYPE A 2P PG11 BLACK, WHITE SILICON FLAT GASKET
1210230690	C81211N2114	TYPE A 2P PG11 BLACK, NBR PROFILE GASKET SINGLE BAGGED IN NEUTRAL BAG
1210230611	C81209G21	TYPE A 2P PG9 GRAY, NBR PROFILE GASKET
1210230622	C81211N23	TYPE A 2P PG11 BLACK, WHITE SILICON PROFILE GASKET
1210230836	C81309N24	TYPE A 3P PG9 BLACK, WHITE SILICON FLAT GASKET
1210230659	C81209T21	TYPE A 2P PG9 TRANSPARENT, NBR PROFILE GASKET
1210230634	C81311N22	TYPE A 3P PG11 BLACK, NBR FLAT GASKET
1210230860	C81309N2G	TYPE A 3P PG9 BLACK, NO GASKET, STANDARD SCREW
1210230871	C81309W21SA	TYPE A 3P PG9 BLACK, NBR FLAT GASKET & SCREW

SEE SHEET 1 EC NO: IFC2015-1444 DRAWN BY: POWNER 2015/02/18 CHKD: DMAHER 2015/02/26 APPR: SUGRIFIN 2015/03/05	DESCRIPTION H	QUALITY SYMBOLS ▽=0 ▽=0	GENERAL TOLERANCES (UNLESS SPECIFIED) <table border="1"> <thead> <tr> <th></th> <th>mm</th> <th>INCH</th> </tr> </thead> <tbody> <tr><td>4 PLACES</td><td>± .005</td><td>± .0004</td></tr> <tr><td>3 PLACES</td><td>± .008</td><td>± .0003</td></tr> <tr><td>2 PLACES</td><td>± 0.10</td><td>± .004</td></tr> <tr><td>1 PLACE</td><td>± 0.20</td><td>± .008</td></tr> </tbody> </table>		mm	INCH	4 PLACES	± .005	± .0004	3 PLACES	± .008	± .0003	2 PLACES	± 0.10	± .004	1 PLACE	± 0.20	± .008	DIMENSION STYLE MM ONLY	SCALE 2:1	DESIGN UNITS METRIC	THIRD ANGLE PROJECTION
			mm	INCH																		
		4 PLACES	± .005	± .0004																		
		3 PLACES	± .008	± .0003																		
2 PLACES	± 0.10	± .004																				
1 PLACE	± 0.20	± .008																				
			DRAWN BY: OSHEA 2011/05/23 CHECKED BY: DMAHER 2011/05/30 APPROVED BY: EFOLAN 2011/06/14	INTERNAL THREAD C81 SERIES																		
			DRAFT WHERE APPLICABLE MUST REMAIN WITHIN DIMENSIONS	MOLEX INCORPORATED																		
			SEE TABLE	SD-121023-008			SHEET NO. 2 OF 2															
THIS DRAWING CONTAINS INFORMATION THAT IS PROPRIETARY TO MOLEX INCORPORATED AND SHOULD NOT BE USED WITHOUT WRITTEN PERMISSION																						