



Chipsmall Limited consists of a professional team with an average of over 10 year of expertise in the distribution of electronic components. Based in Hongkong, we have already established firm and mutual-benefit business relationships with customers from,Europe,America and south Asia,supplying obsolete and hard-to-find components to meet their specific needs.

With the principle of “Quality Parts,Customers Priority,Honest Operation,and Considerate Service”,our business mainly focus on the distribution of electronic components. Line cards we deal with include Microchip,ALPS,ROHM,Xilinx,Pulse,ON,Everlight and Freescale. Main products comprise IC,Modules,Potentiometer,IC Socket,Relay,Connector.Our parts cover such applications as commercial,industrial, and automotives areas.

We are looking forward to setting up business relationship with you and hope to provide you with the best service and solution. Let us make a better world for our industry!



Contact us

Tel: +86-755-8981 8866 Fax: +86-755-8427 6832

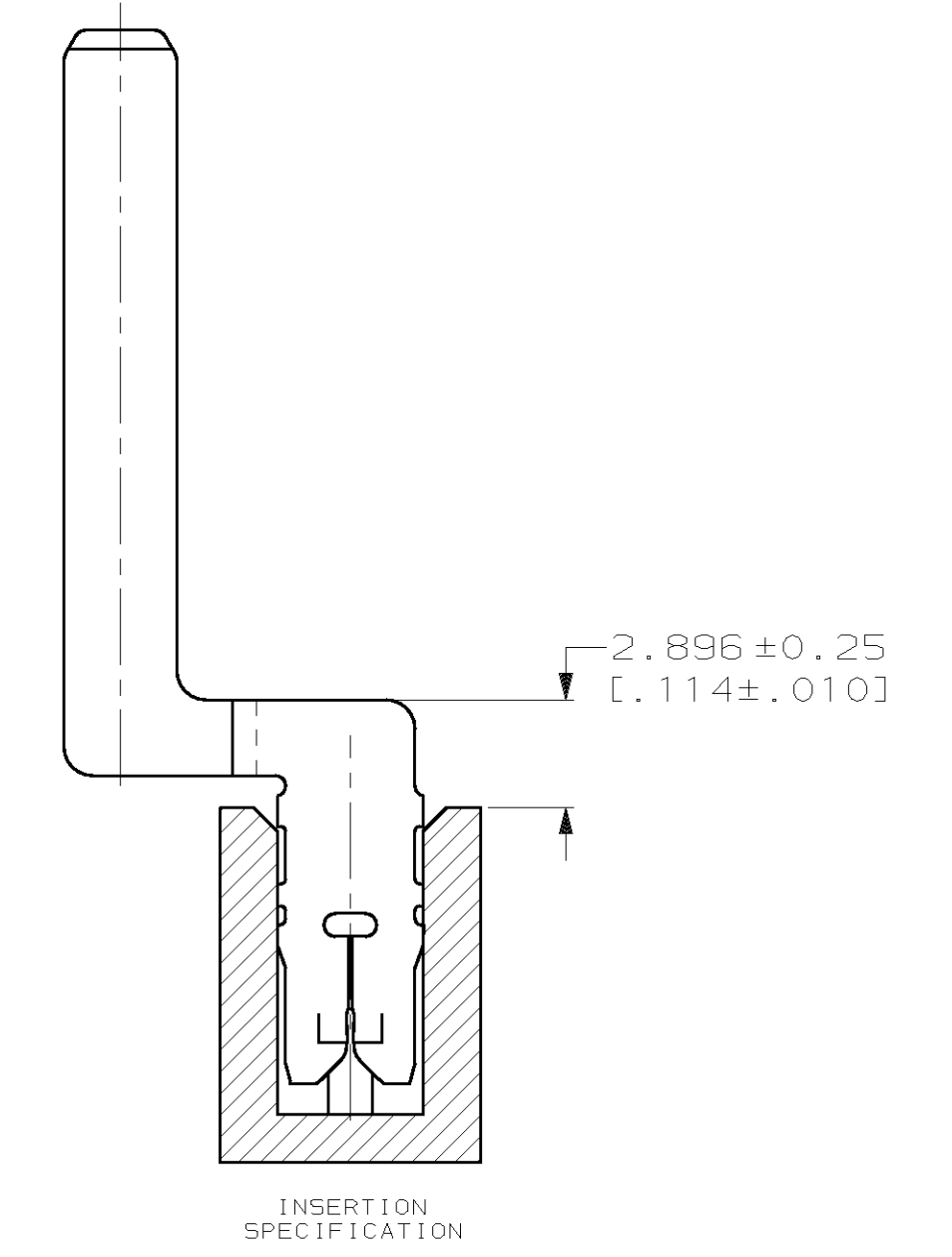
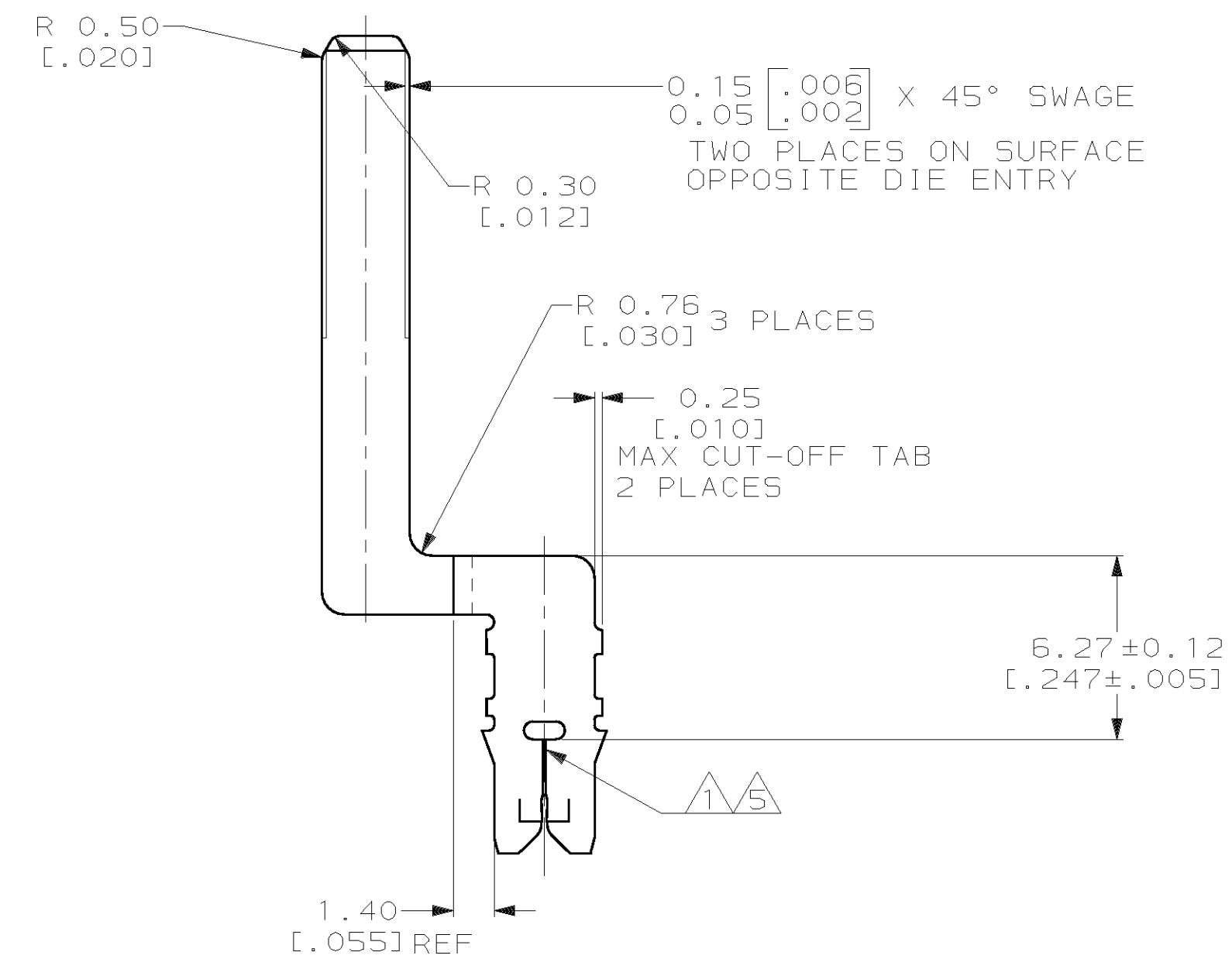
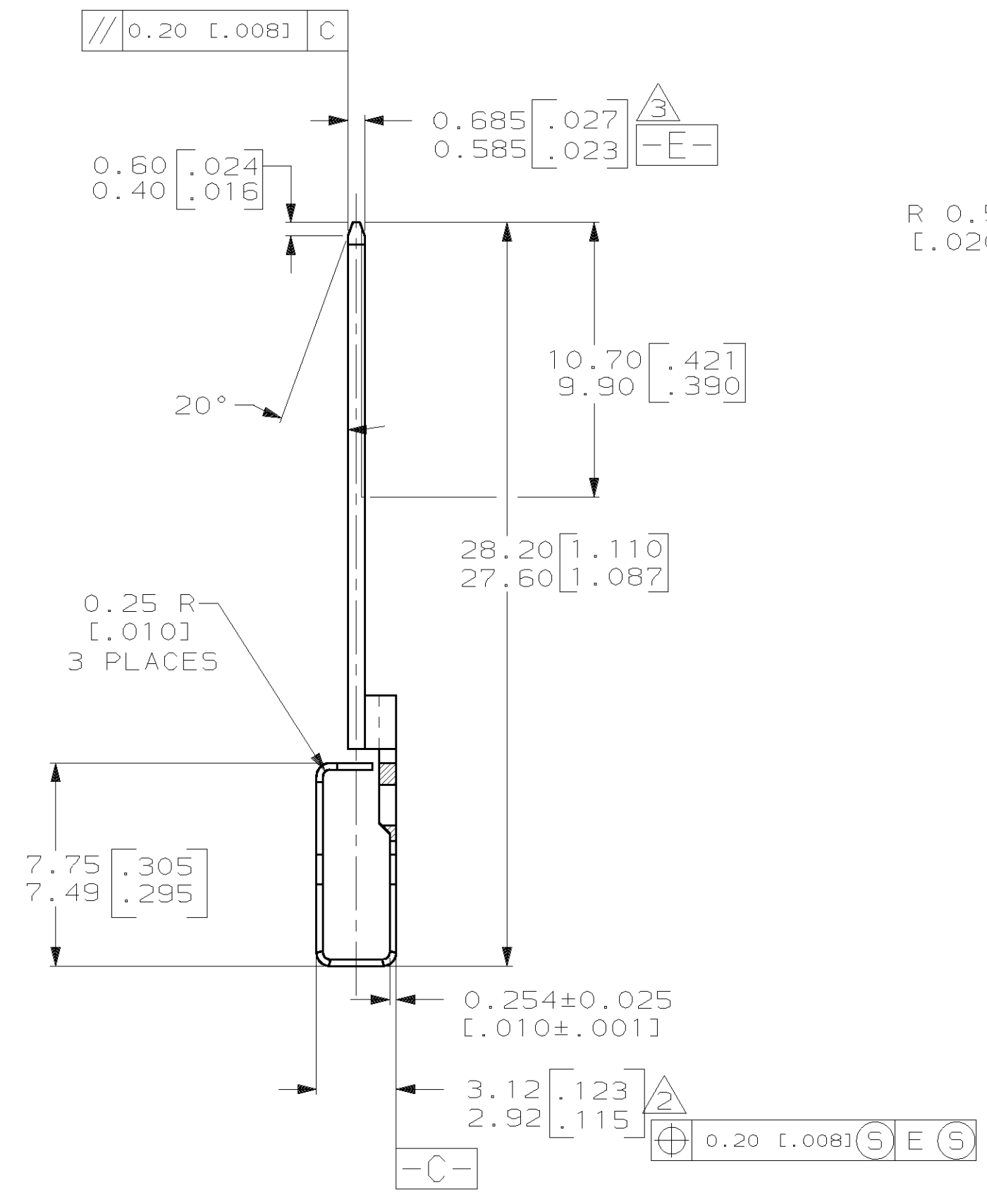
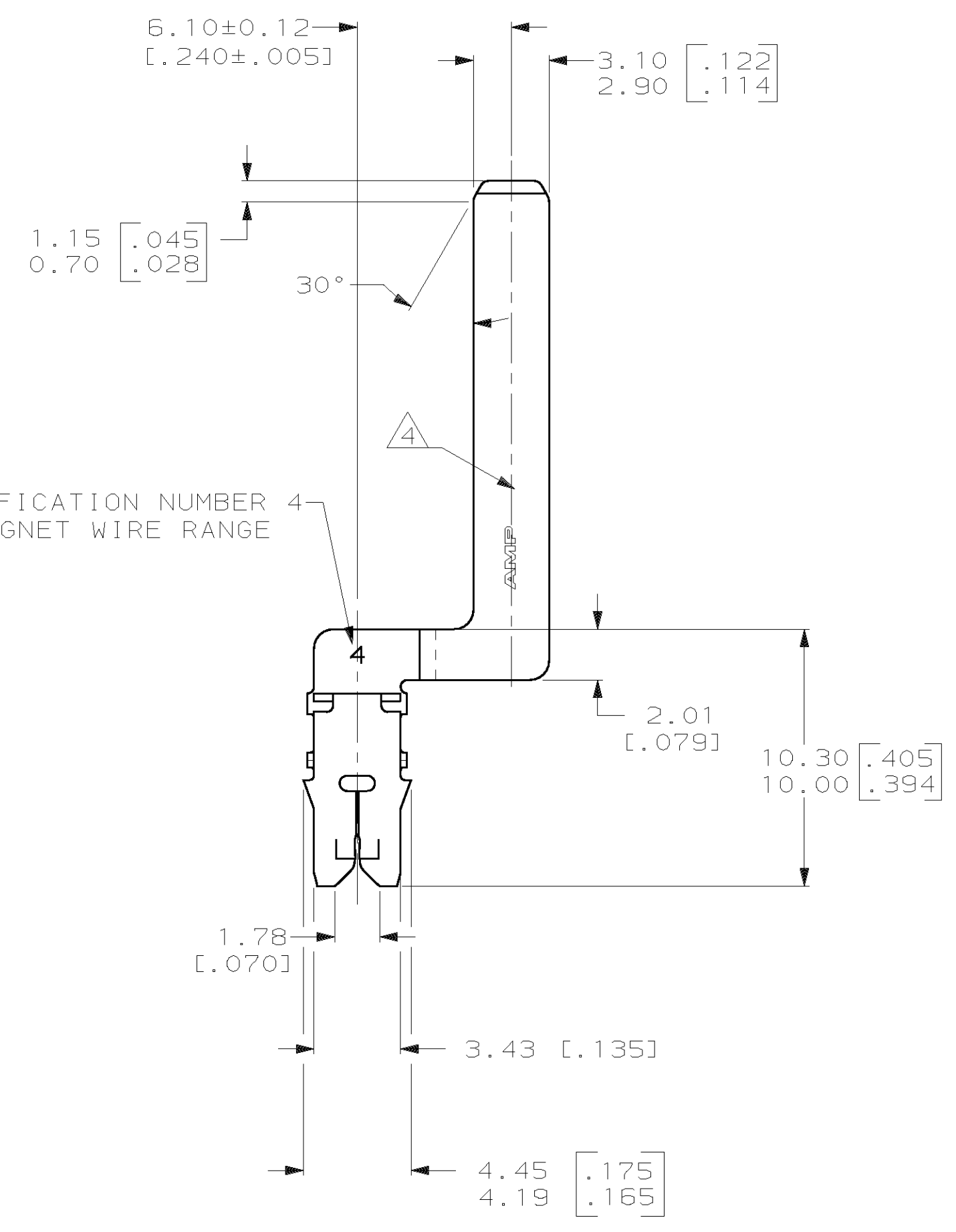
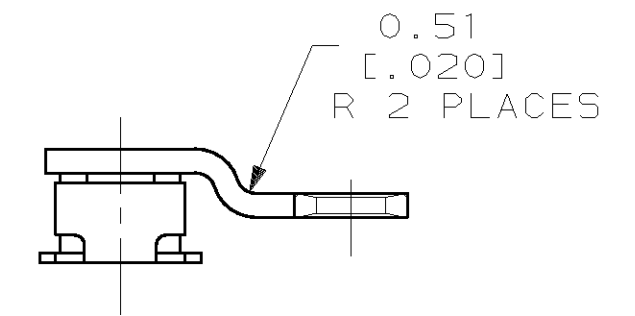
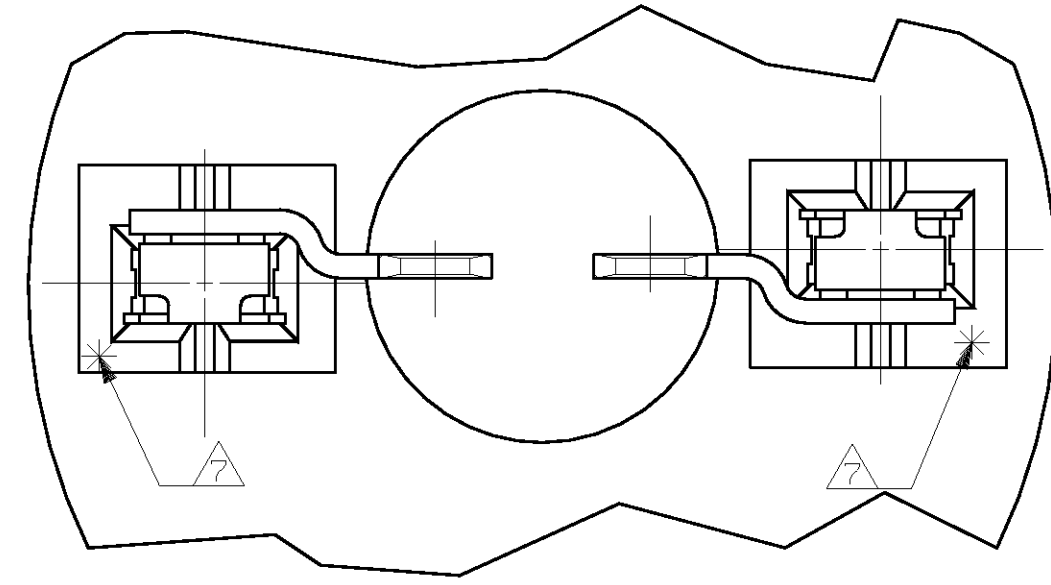
Email & Skype: info@chipsmall.com Web: www.chipsmall.com

Address: A1208, Overseas Decoration Building, #122 Zhenhua RD., Futian, Shenzhen, China



| LOC | | DIST | | REVISIONS | | | |
|-----|----|------|-----|----------------------|--------|-----|------|
| AF | 50 | TR | LTR | DESCRIPTION | DATE | OWN | APVD |
| | | A | | REV PER 061A-0055-98 | 5FE898 | RG | NN |

- 1 SLOT TERMINATES A SINGLE 0.20mm DIA [#32] AWG COPPER MAGNET WIRE.
- 2 BOX TO MEET THIS DIMENSION WHEN INSERTED INTO A CAVITY 3.12 [.123] DEEP.
- 3 SYMMETRY TO BE MEASURED AT THE "NOSE" OF THE BOX.
- 4 MEASURE PLATING THICKNESS ON THE TAB, FORMED SIDE OF THE TERMINAL.
- 5 SLOT MUST ACCEPT A 0.089 [.0035] DIA PIN GAGE; SLOT MUST NOT ACCEPT A 0.18 [.007] DIA PIN GAGE. MEASURE ONE BEAM AT A TIME.
- 6 0.00254-0.006 [.000100-.000250] THICK TIN PLATE
- 7 POINT OF MEASUREMENT, LOCATED APPROXIMATELY AS SHOWN



1217032-1
PART NUMBER

| | | | | |
|--|------------|-----------------------------|-----------------------------|-----------------|
| THIS DRAWING IS A CONTROLLED DOCUMENT. | | DWN R. GRZYBOWSKI 24NOV97 | AMP AMP Incorporated | |
| DIMENSIONS: mm (INCHES) | | CHK M. S. FEHER 24NOV97 | Harrisburg, PA 17105-3608 | |
| TOLERANCES UNLESS OTHERWISE SPECIFIED: | | APVD NELSON F. NEFF 24NOV97 | NAME | |
| 0 PLC ±- | 1 PLC ±- | PRODUCT SPEC | | |
| 2 PLC ±0.18 (.007) | 3 PLC ±- | 108-2012 | | |
| 4 PLC ±- | ANGLES 43° | APPLICATION SPEC | | |
| MATERIAL H04 PRE-MILLED BRASS | | WEIGHT - | SIZE A1 | CAGE CODE 00779 |
| FINISH | | SCALE 5:1 | DRAWING NO 1217032 | RESTRICTED TO |
| | | CUSTOMER DRAWING | SHEET 1 OF 1 | REV A |