



Chipsmall Limited consists of a professional team with an average of over 10 year of expertise in the distribution of electronic components. Based in Hongkong, we have already established firm and mutual-benefit business relationships with customers from,Europe,America and south Asia,supplying obsolete and hard-to-find components to meet their specific needs.

With the principle of “Quality Parts,Customers Priority,Honest Operation,and Considerate Service”,our business mainly focus on the distribution of electronic components. Line cards we deal with include Microchip,ALPS,ROHM,Xilinx,Pulse,ON,Everlight and Freescale. Main products comprise IC,Modules,Potentiometer,IC Socket,Relay,Connector.Our parts cover such applications as commercial,industrial, and automotives areas.

We are looking forward to setting up business relationship with you and hope to provide you with the best service and solution. Let us make a better world for our industry!



Contact us

Tel: +86-755-8981 8866 Fax: +86-755-8427 6832

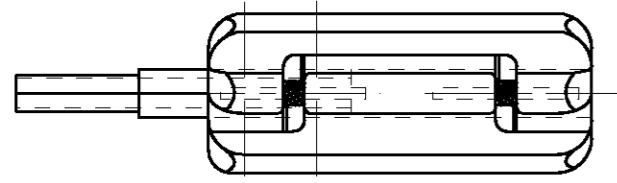
Email & Skype: info@chipsmall.com Web: www.chipsmall.com

Address: A1208, Overseas Decoration Building, #122 Zhenhua RD., Futian, Shenzhen, China



THIS DRAWING IS UNPUBLISHED. RELEASED FOR PUBLICATION .19
 BY AMP INCORPORATED. ALL RIGHTS RESERVED.

LOC	DIST	REVISIONS			
P	LTR	DESCRIPTION	DATE	DWN	APVD
DF	AO	0	PROPOSAL DRAWING	2-01	CT JM



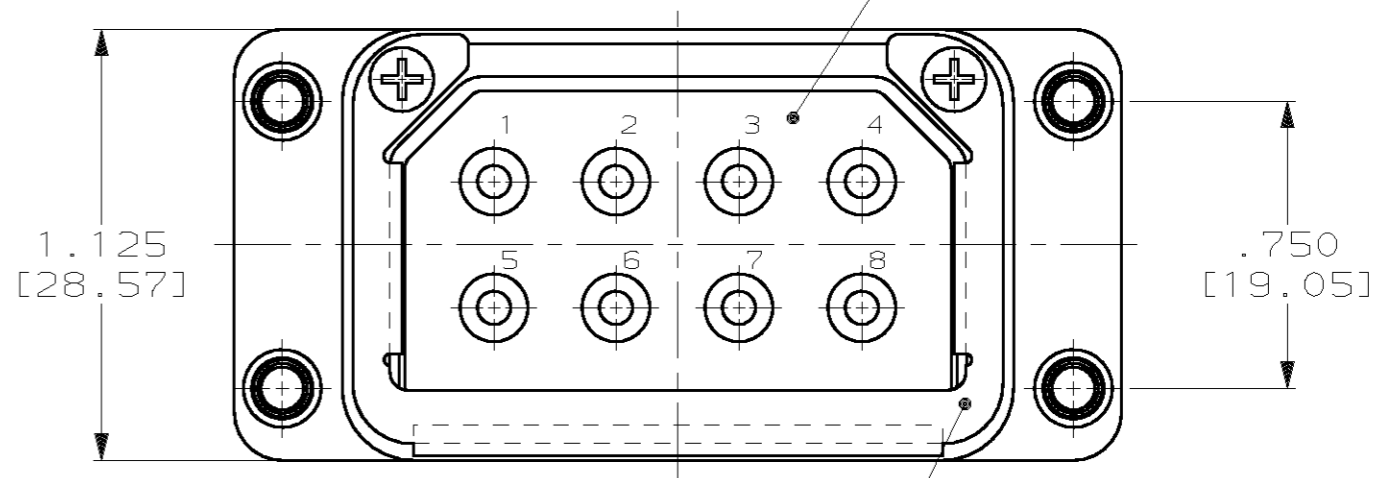
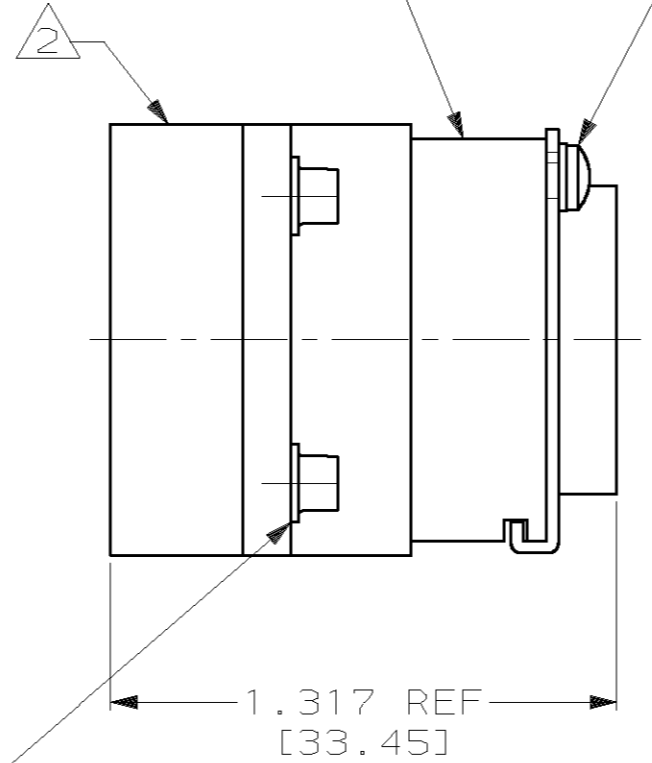
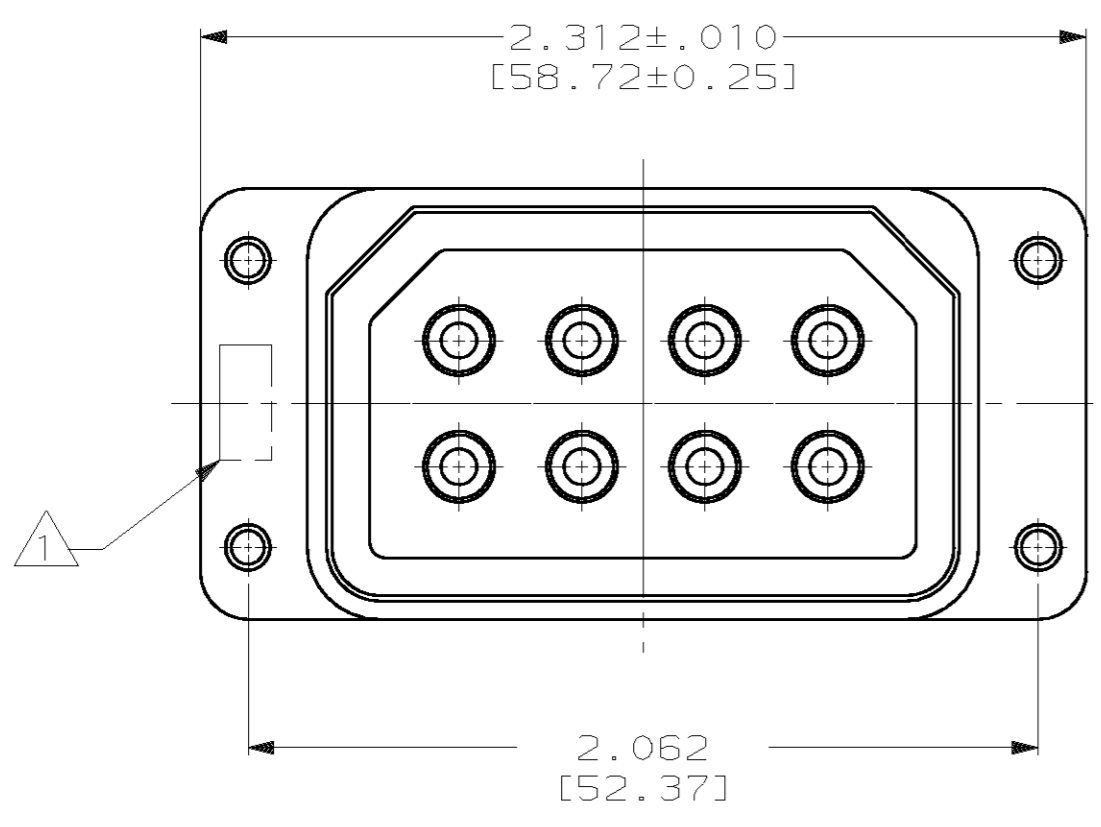
EXTRACTION TOOL
SCALE 1:1

PLUG SHELL
MAT'L: ALUMINUM ALLOY
FINISH: CADMIUM PLATED; YELLOW CHROMATE

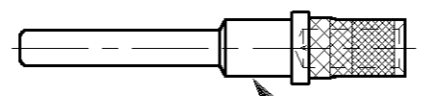
SCREWS & LOCKWASHERS
MAT'L: STAINLESS STEEL
FINISH: PASSIVATED

8 POSN PIN INSERT
MAT'L: EPOXY MLDG. CMPD.

RETENTION PLATE
MAT'L: STAINLESS STEEL
FINISH: PASSIVATED



#4-40 CLINCH NUTS



PIN CONTACT
QTY = 8

- 1 DATE CODE MARKED IN THIS AREA.
- 2 AMP PART NUMBER MARKED ON THIS SURFACE.
- 3 ASSEMBLY INCLUDES 8 #12 PIN CONTACTS, AMP P/N 205763-3.

PRELIMINARY- NOT RELEASED FOR PRODUCTION

1218958-1
PART NO.

THIS DRAWING IS A CONTROLLED DOCUMENT.		DWN C.C. THOMAS 2-13-01	AMP Incorporated Harrisburg, PA 17105-3608	
DIMENSIONS: INCHES [mm]		CHK J. MARKEY 2-13-01	NAME PLUG ASSY, ARINC 404, RMA1R8P-01 (200)	
TOLERANCES UNLESS OTHERWISE SPECIFIED: 0 PLC ±- 1 PLC ±- 2 PLC ±- 3 PLC ±.005 [0.13] 4 PLC ±- ANGLES ±-		APVD J. MARKEY 2-13-01	RESTRICTED TO	
MATERIAL SEE CALLOUTS		FINISH SEE CALLOUTS	SIZE A2	CAGE CODE 00779
		WEIGHT -	DRAWING NO. C-1218958	SCALE 2:1
		CUSTOMER DRAWING	SHEET 1 OF 1	REV 0