



Chipsmall Limited consists of a professional team with an average of over 10 year of expertise in the distribution of electronic components. Based in Hongkong, we have already established firm and mutual-benefit business relationships with customers from,Europe,America and south Asia,supplying obsolete and hard-to-find components to meet their specific needs.

With the principle of “Quality Parts,Customers Priority,Honest Operation,and Considerate Service”,our business mainly focus on the distribution of electronic components. Line cards we deal with include Microchip,ALPS,ROHM,Xilinx,Pulse,ON,Everlight and Freescale. Main products comprise IC,Modules,Potentiometer,IC Socket,Relay,Connector.Our parts cover such applications as commercial,industrial, and automotives areas.

We are looking forward to setting up business relationship with you and hope to provide you with the best service and solution. Let us make a better world for our industry!



Contact us

Tel: +86-755-8981 8866 Fax: +86-755-8427 6832

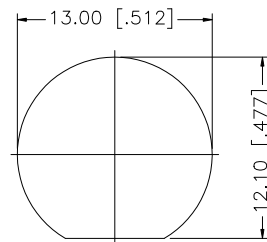
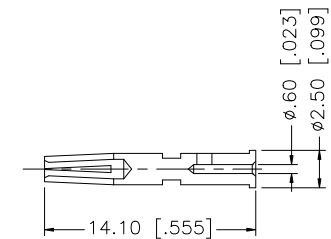
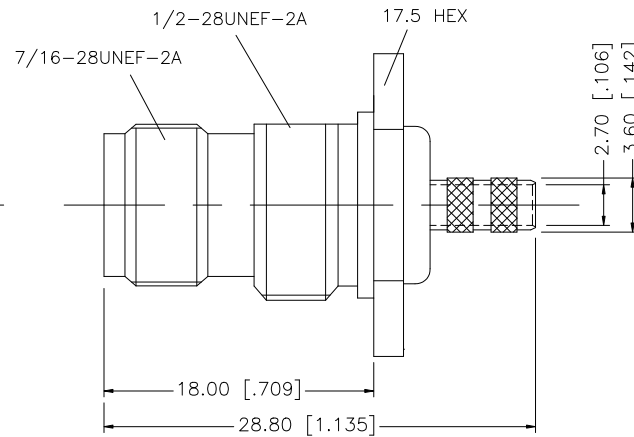
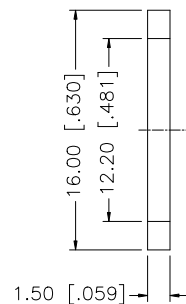
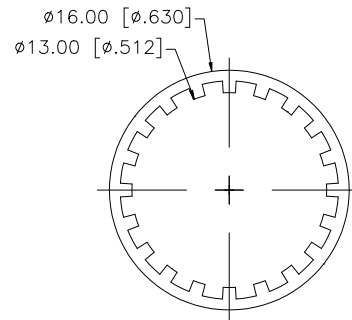
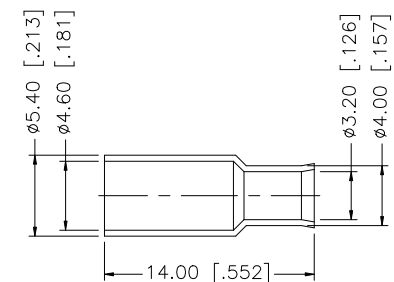
Email & Skype: info@chipsmall.com Web: www.chipsmall.com

Address: A1208, Overseas Decoration Building, #122 Zhenhua RD., Futian, Shenzhen, China



REV.	DATE	ECR NO.	DESCRIPTION
NC	03/20/05	—	INITIAL RELEASE
A	01/20/09	100073	UPDATE DRAWING FORMAT

RECOMMENDED
CABLE STRIPPING DIM'S

RECOMMENDED
MOUNTING HOLE

					UNLESS OTHERWISE SPECIFIED DIMENSIONS ARE IN MILLIMETERS. DIMENSIONS IN [] ARE IN INCHES AND FOR CUSTOMER REFERENCE ONLY. UNLESS OTHERWISE SPECIFIED TOLERANCES FOR MILLIMETERS ARE: 0.5 – 8mm ± 0.20mm 8 – 30mm ± 0.40mm 30 – 120mm ± 0.50mm UNLESS OTHERWISE SPECIFIED TOLERANCES FOR INCHES ARE: .020 – .315 = ± 0.007" .315 – 1.180 = ± 0.015" 1.180 – 4.724 = ± 0.020" DO NOT SCALE DRAWING	APPROVALS		DATE		Amphenol Connex									
8	FERRULE	COPPER	NICKEL	1		DRAWN	GRS	01/20/09											
7	SLEEVE	DELTRIN	NATURAL	1		CHECKED													
6	HEX NUT	BRASS	NICKEL	1		ISSUED				PART DESCRIPTION TNC BULKHEAD CRIMP JACK (FOR RG-174/U, 316/U DOUBLE BRAID)									
5	LOCK WASHER	BRASS	NICKEL	1		SHEET	1 OF 1												
4	GASKET	SILICONE	RED	1															
3	CONTACT PIN	BER. COPPER	GOLD	1							PART NO. 122358								
2	INSULATOR	DELTRIN	NATURAL	1															
1	BODY	BRASS	NICKEL	1															
	DESCRIPTION	MATERIAL	FINISH	QTY	CAD FILE C:/122/122358.DWG					DWG. NO.		122358.DWG		REV.	NC	SIZE	A	SCALE	NA