



Chipsmall Limited consists of a professional team with an average of over 10 year of expertise in the distribution of electronic components. Based in Hongkong, we have already established firm and mutual-benefit business relationships with customers from,Europe,America and south Asia,supplying obsolete and hard-to-find components to meet their specific needs.

With the principle of “Quality Parts,Customers Priority,Honest Operation,and Considerate Service”,our business mainly focus on the distribution of electronic components. Line cards we deal with include Microchip,ALPS,ROHM,Xilinx,Pulse,ON,Everlight and Freescale. Main products comprise IC,Modules,Potentiometer,IC Socket,Relay,Connector.Our parts cover such applications as commercial,industrial, and automotives areas.

We are looking forward to setting up business relationship with you and hope to provide you with the best service and solution. Let us make a better world for our industry!



Contact us

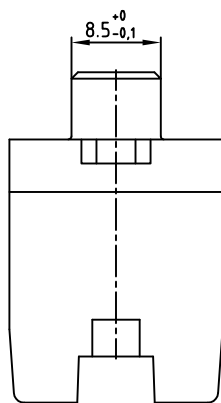
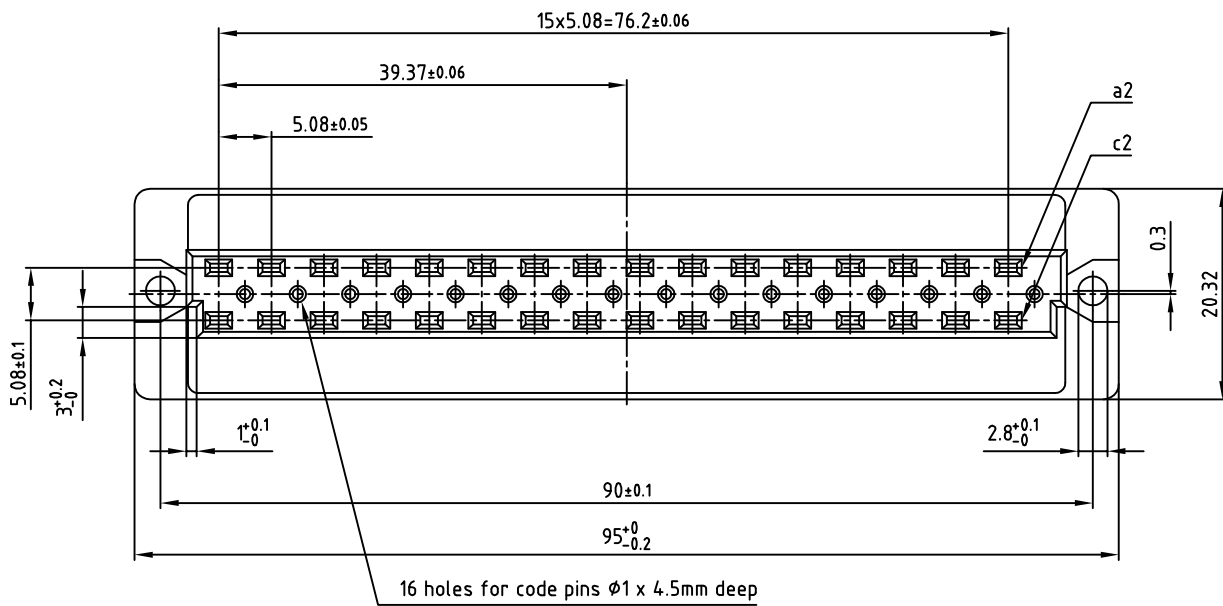
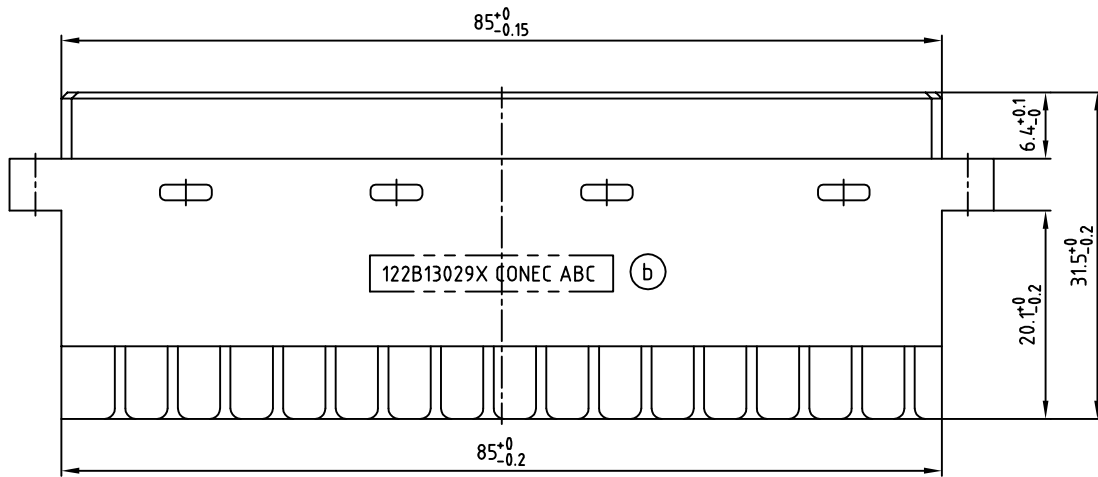
Tel: +86-755-8981 8866 Fax: +86-755-8427 6832

Email & Skype: info@chipsmall.com Web: www.chipsmall.com

Address: A1208, Overseas Decoration Building, #122 Zhenhua RD., Futian, Shenzhen, China



used for: DIN EN 60603-2 TYPE "D"



Technical Data

Conductor size: AWG 24...16
 Rated current: 6A
 Rated voltage: 300/250 V~
 Moulding material: PBT GF grey
 Operating temperature: -55°C to +120°C
 Flammability: UL 94 V-0
 Contact material: CuSn 6
 Contact finish: Au over Ni
 Screw connection: steel

Directive 2002/95/EC RoHS compliant

THIS DRAWING MAY NOT BE COPIED OR REPRODUCED IN ANY WAY, AND MAY NOT BE PASSED ON TO A THIRD PARTY, WITHOUT WRITTEN PERMISSION.
 OWNERSHIP AND COPYRIGHT OF CONEC GmbH DO NOT ALTER CAD DRAWING BY HAND

rev.	description	date	name
2 x b	Ä3966	13.04.2011	K.H.
a	Original		

tolerance		
	dim. in mm	
2010	date	name
drawn	12.10.	Henneboel
appd.	13.10.	Koch
norm	DIN EN 60603-2	
d-old		

scale:	2:1
material:	SEE NOTES
title:	FEMALE CONNECTOR TYPE "D" 32pos. with screw termination
dwg no:	12K1A700
part no:	122B13029X
DIN-A	3
sh:	1/1

