



Chipsmall Limited consists of a professional team with an average of over 10 year of expertise in the distribution of electronic components. Based in Hongkong, we have already established firm and mutual-benefit business relationships with customers from,Europe,America and south Asia,supplying obsolete and hard-to-find components to meet their specific needs.

With the principle of “Quality Parts,Customers Priority,Honest Operation,and Considerate Service”,our business mainly focus on the distribution of electronic components. Line cards we deal with include Microchip,ALPS,ROHM,Xilinx,Pulse,ON,Everlight and Freescale. Main products comprise IC,Modules,Potentiometer,IC Socket,Relay,Connector.Our parts cover such applications as commercial,industrial, and automotives areas.

We are looking forward to setting up business relationship with you and hope to provide you with the best service and solution. Let us make a better world for our industry!



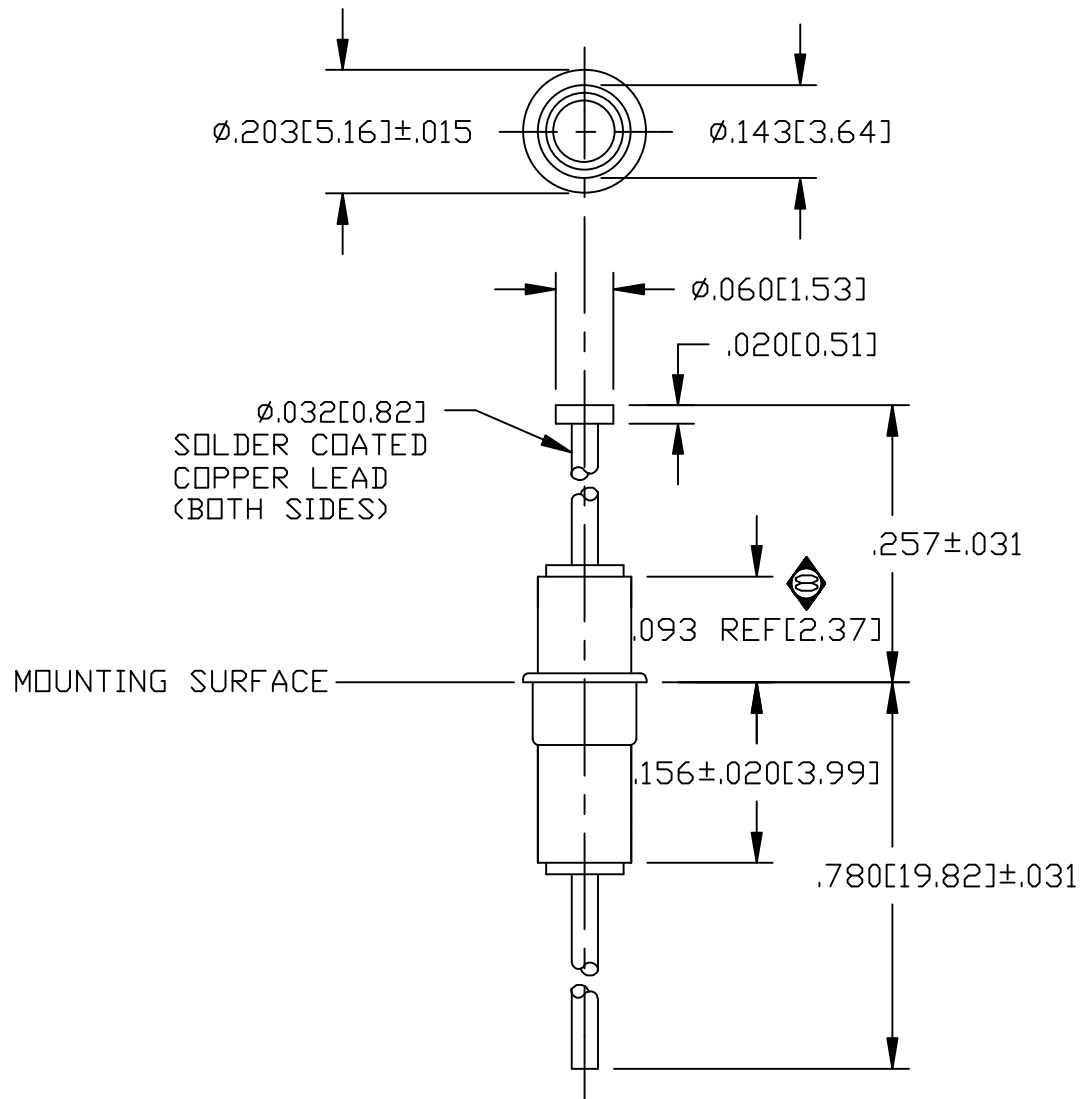
Contact us

Tel: +86-755-8981 8866 Fax: +86-755-8427 6832

Email & Skype: info@chipsmall.com Web: www.chipsmall.com

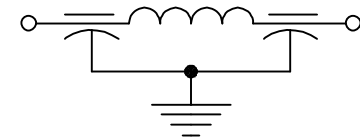
Address: A1208, Overseas Decoration Building, #122 Zhenhua RD., Futian, Shenzhen, China





CAPACITANCE pF	12000pF GMV
TEMP. RANGE	-55°C TO 125°C
CURRENT	10 AMP
WORKING VOLTAGE	85°C, 100 VDC 125°C, 70 VDC
D.C. RESISTANCE	.01 OHM MAX.
I.L. PER MIL-STD-220 MIN. @ NO LOAD	
FREQ. MHz	I.L. (db)
10 MHz	25
20 MHz	40
100MHz	70
400MHz	70
10 GHz	70

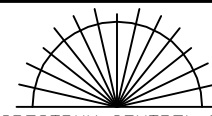
SCHEMATIC



MARKING:

PART: NONE
 BAG: 1234-000
 DATE CODE
 QTY./BAG (200 MAX.)

NOTE: SUGGESTED MOUNTING HOLE = $\phi.160$

	8	7	6	5	4	3	2	1	0	REV. NO.	TOLERANCES UNLESS OTHERWISE SPECIFIED	 ERIE, FAIRVIEW PENNSYLVANIA SPECTRUM CONTROL INC.		
	CN 206597	CN 202454	CN 201250	CN 185103	CN 165705	CN 153749	CN 153131	CN 148903	CN 146190	CHANGE NOTICE	Fractions $\pm 1/64$		Dwn. D.Humphreys	Description
											Dec. .xx \pm		Ckd. 4/9/02	FILTER, SING, PI, EYELET
											Dec. .xxx $\pm .015$		Apvd.	1234-000
											Angles $\pm 0^{\circ} 30'$		Scale NTS	
											CODE IDENT. NO. DLSP2			