



Chipsmall Limited consists of a professional team with an average of over 10 year of expertise in the distribution of electronic components. Based in Hongkong, we have already established firm and mutual-benefit business relationships with customers from,Europe,America and south Asia,supplying obsolete and hard-to-find components to meet their specific needs.

With the principle of "Quality Parts,Customers Priority,Honest Operation,and Considerate Service",our business mainly focus on the distribution of electronic components. Line cards we deal with include Microchip,ALPS,ROHM,Xilinx,Pulse,ON,Everlight and Freescale. Main products comprise IC,Modules,Potentiometer,IC Socket,Relay,Connector.Our parts cover such applications as commercial,industrial, and automotives areas.

We are looking forward to setting up business relationship with you and hope to provide you with the best service and solution. Let us make a better world for our industry!



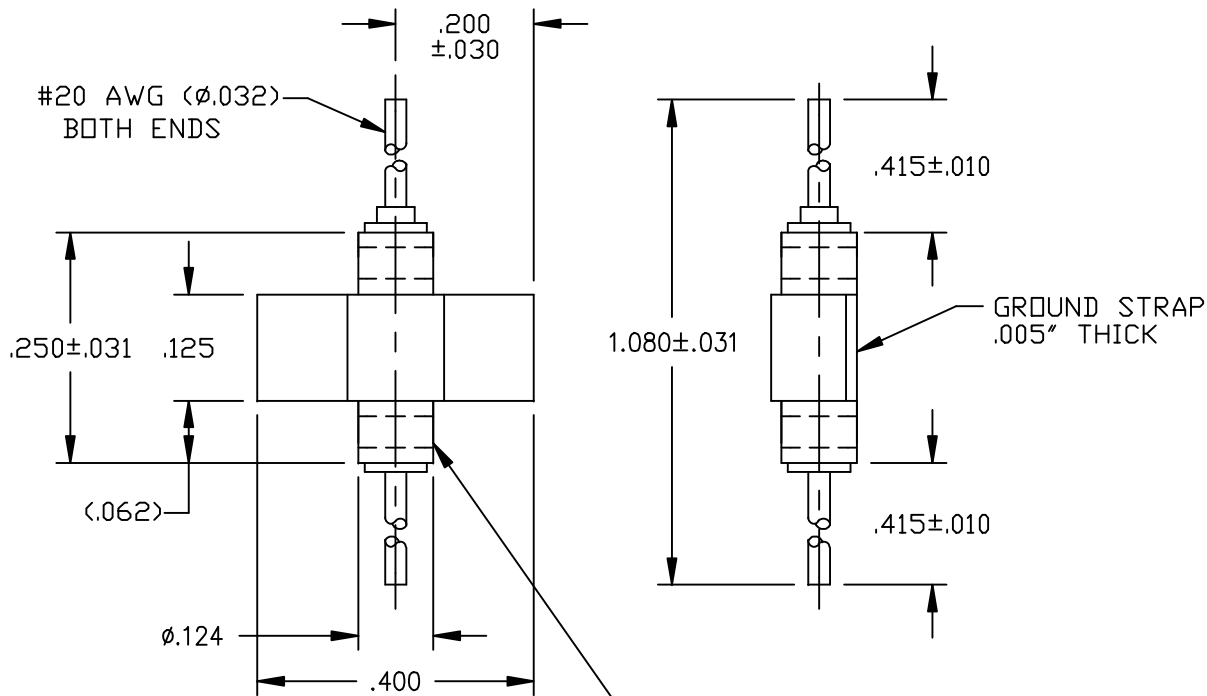
Contact us

Tel: +86-755-8981 8866 Fax: +86-755-8427 6832

Email & Skype: info@chipsmall.com Web: www.chipsmall.com

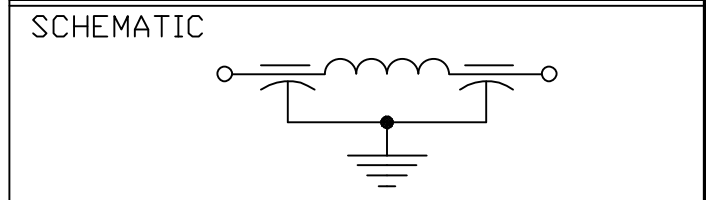
Address: A1208, Overseas Decoration Building, #122 Zhenhua RD., Futian, Shenzhen, China



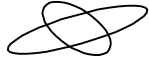


NOTE: STRAP CANNOT COVER BANDING.

LEAD FINISH: SOLDER			
GROUND STRAP: FINISH: SILVER			
CAPACITANCE pF	12,000pF GMV		
TEMP. RANGE	-55°C TO 125°C		
CURRENT	10 AMP DC		
WORKING VOLTAGE	85°C, 100 VDC 125°C, 70 VDC		
D.C. RESISTANCE	.01 ohms		
INSERTION LOSS PER MIL-STD-2201 (NO LOAD)			
FREQ.(MHz)	10	100	1GHz
LIMITED (dB)	25	70	65



MARKING:
 PART: NONE
 BAG: SCI 1234-001
 DATE CODE
 LOT NO.
 QTY./BAG (200 MAX.)

	8	7	6	5	4	3	2	1	0	REV. NO.	TOLERANCES UNLESS OTHERWISE SPECIFIED	api  technologies corp.	FAIRVIEW PENNSYLVANIA
	CN #16035	CN 10418-CPD	CN 172443	CN 169615 REDRAWN	CN 156801	CN 155084	CN 150664	CN 148903	CN 146639	CHANGE NOTICE	Fractions ± 1/64		
											Dec. .xx±	Date 10-02-15	SURFACE MOUNT FILTER
											Dec. .xxx± .010	Engr. DEVINE	1234-001
											Angles ±0° 30'	Scale NTS	
											CODE IDENT. NO. OLSP2		