



Chipsmall Limited consists of a professional team with an average of over 10 year of expertise in the distribution of electronic components. Based in Hongkong, we have already established firm and mutual-benefit business relationships with customers from,Europe,America and south Asia,supplying obsolete and hard-to-find components to meet their specific needs.

With the principle of “Quality Parts,Customers Priority,Honest Operation,and Considerate Service”,our business mainly focus on the distribution of electronic components. Line cards we deal with include Microchip,ALPS,ROHM,Xilinx,Pulse,ON,Everlight and Freescale. Main products comprise IC,Modules,Potentiometer,IC Socket,Relay,Connector.Our parts cover such applications as commercial,industrial, and automotives areas.

We are looking forward to setting up business relationship with you and hope to provide you with the best service and solution. Let us make a better world for our industry!



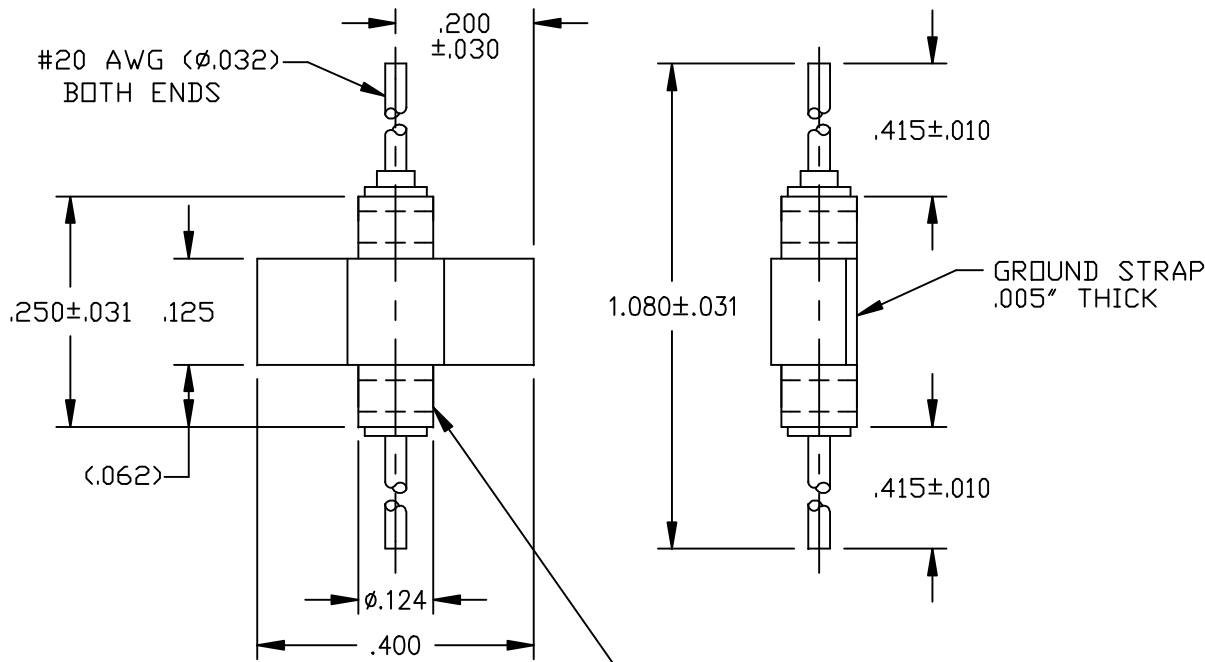
Contact us

Tel: +86-755-8981 8866 Fax: +86-755-8427 6832

Email & Skype: info@chipsmall.com Web: www.chipsmall.com

Address: A1208, Overseas Decoration Building, #122 Zhenhua RD., Futian, Shenzhen, China



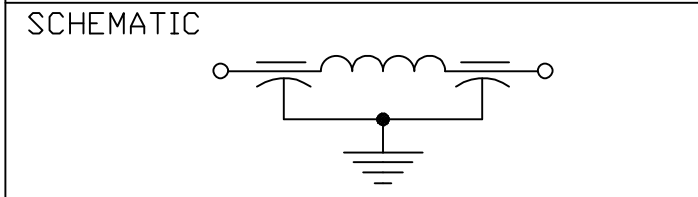


NOTE: STRAP CANNOT COVER BANDING.



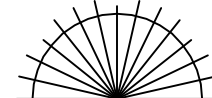
01

LEAD FINISH: SOLDER			
GROUND STRAP: NICKEL			
CAPACITANCE pF	12,000pF GMV		
TEMP. RANGE	-55°C TO 125°C		
CURRENT	10 AMP DC		
WORKING VOLTAGE	85°C, 100 VDC 125°C, 70 VDC		
D.C. RESISTANCE	.01 ohms		
INSERTION LOSS PER MIL-STD-2201 (NO LOAD)			
FREQ.(MHz)	10	100	1GHz
LIMITED (dB)	25	70	65



MARKING:
 PART: NONE
 BAG: SCI 1234F-001
 DATE CODE
 LOT NO.
 QTY./BAG (200 MAX.)

- NOTES:
- 1) THIS IS A LEAD FREE PRODUCT.
 - 2) MAX REFLOW IS 245°C FOR 5 SEC.

									01	00	REV. NO.	TOLERANCES UNLESS OTHERWISE SPECIFIED	 SPECTRUM CONTROL INC. ERIE, FAIRVIEW PENNSYLVANIA		
									CN 36348-ENG	CN 30483-CPD	CHANGE NOTICE	Fractions ± 1/64		Dwn. D.Humphreys	Description
												Dec. .xx±		Date 7-24-07	SURFACE MOUNT FILTER
												Dec. .xxx± .010		Engr. SACKETT	
												Angles ±0° 30'		Scale NTS	1234F-001
												CODE IDENT. NO. OLSP2			

