



Chipsmall Limited consists of a professional team with an average of over 10 year of expertise in the distribution of electronic components. Based in Hongkong, we have already established firm and mutual-benefit business relationships with customers from,Europe,America and south Asia,supplying obsolete and hard-to-find components to meet their specific needs.

With the principle of “Quality Parts,Customers Priority,Honest Operation,and Considerate Service”,our business mainly focus on the distribution of electronic components. Line cards we deal with include Microchip,ALPS,ROHM,Xilinx,Pulse,ON,Everlight and Freescale. Main products comprise IC,Modules,Potentiometer,IC Socket,Relay,Connector.Our parts cover such applications as commercial,industrial, and automotives areas.

We are looking forward to setting up business relationship with you and hope to provide you with the best service and solution. Let us make a better world for our industry!



## Contact us

Tel: +86-755-8981 8866 Fax: +86-755-8427 6832

Email & Skype: info@chipsmall.com Web: www.chipsmall.com

Address: A1208, Overseas Decoration Building, #122 Zhenhua RD., Futian, Shenzhen, China



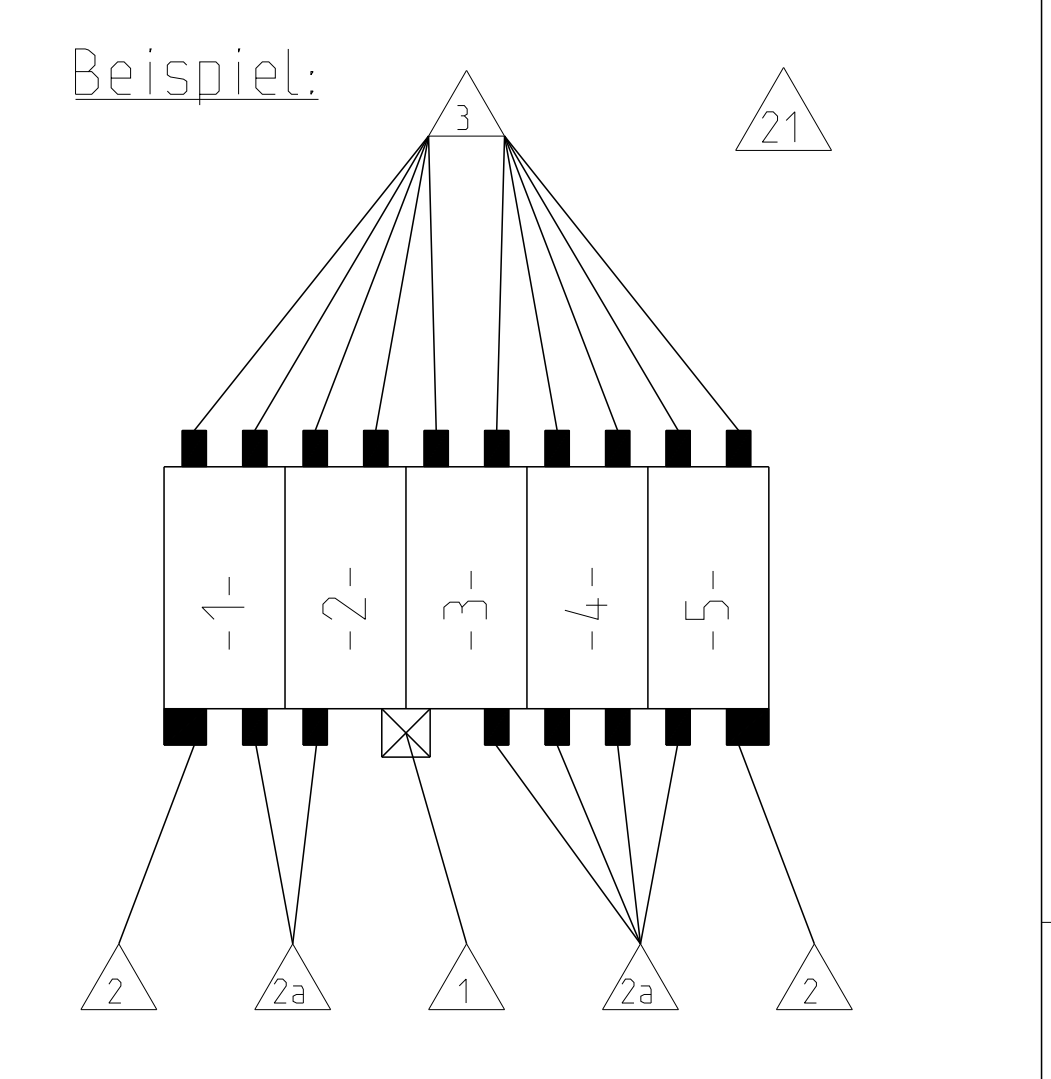
1 pos.	2 pos.	3 pos.	4 pos.
<p>PN 0-1241171-1 PN 0-1534073-1 PN 0-2178661-1</p>	<p>PN 0-1241171-2 PN 0-1534073-2 PN 0-2178661-2</p>	<p>PN 0-1241171-3 PN 0-1534073-3 PN 0-2178661-3</p>	<p>PN 0-1241171-4 PN 0-1534073-4 PN 0-2178661-4</p>

1 pos.	2 pos.	3 pos.	4 pos.
<p>PN 1-1241171-4 PN 1-1534073-4 PN 1-2178661-4</p>	<p>PN 1-1241171-3 PN 1-1534073-3 PN 1-2178661-3</p>	<p>PN 1-1241171-4 PN 1-1534073-4 PN 1-2178661-4</p>	<p>PN 1-1241171-4 PN 1-1534073-4 PN 1-2178661-4</p>

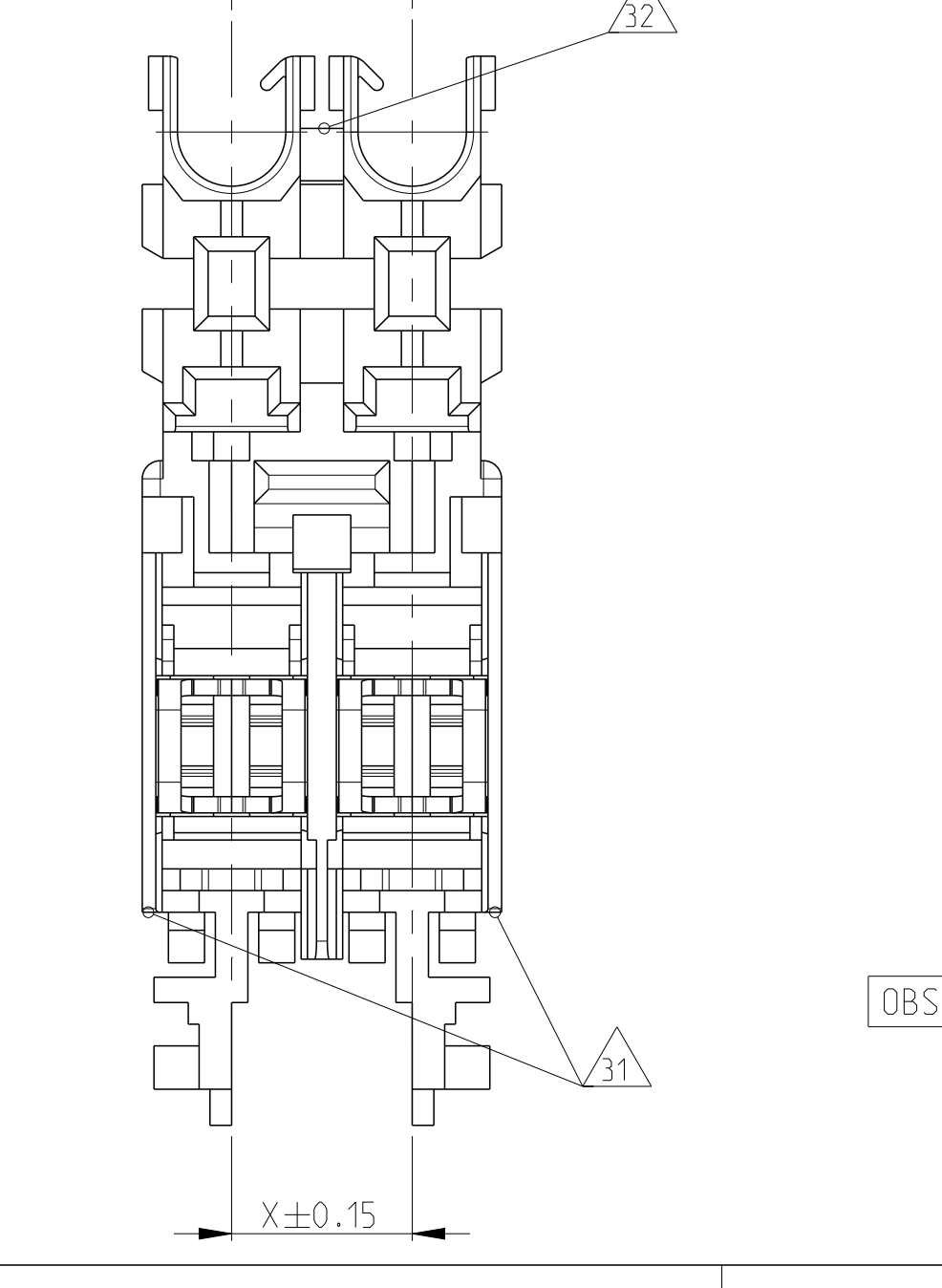
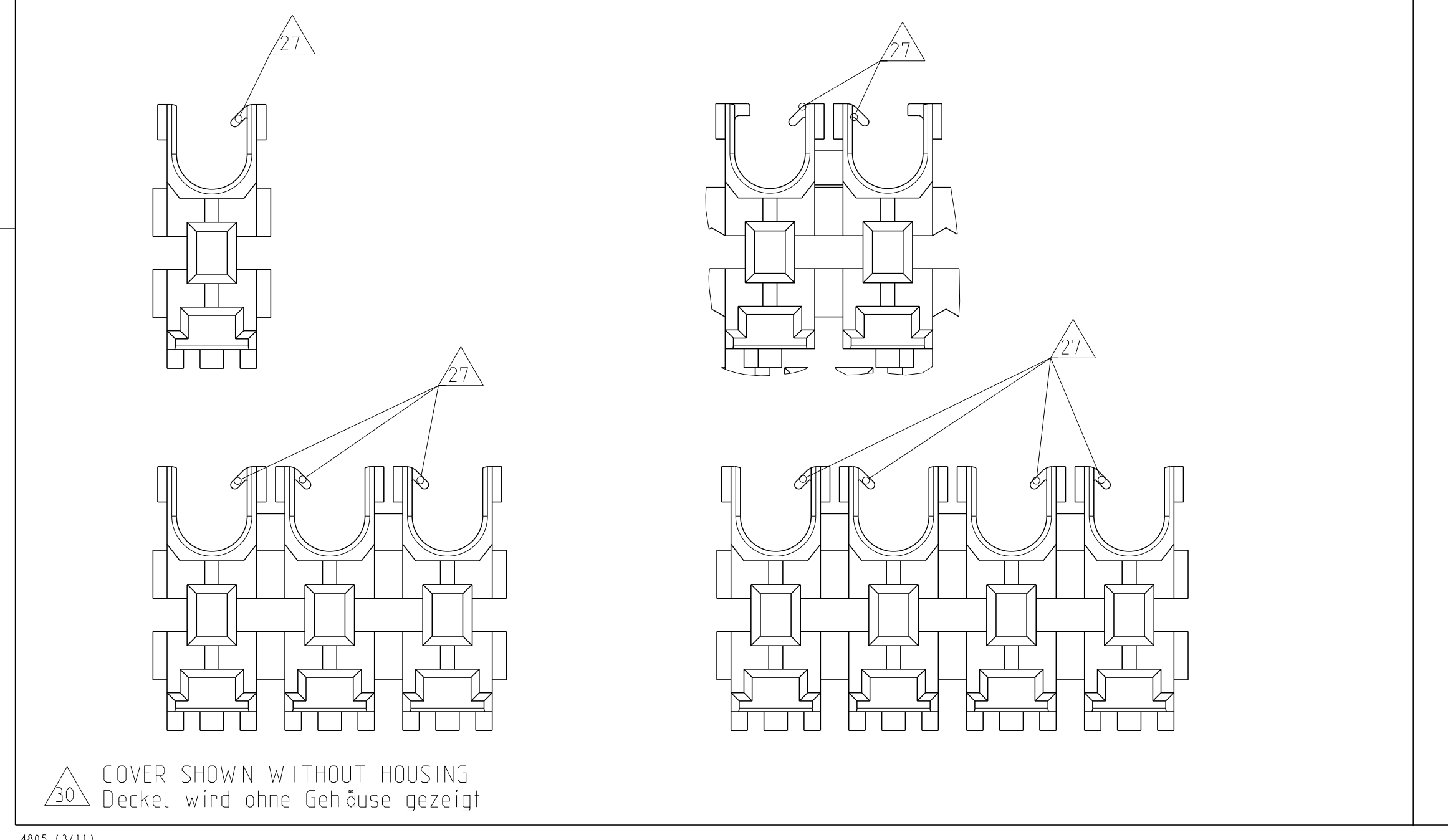
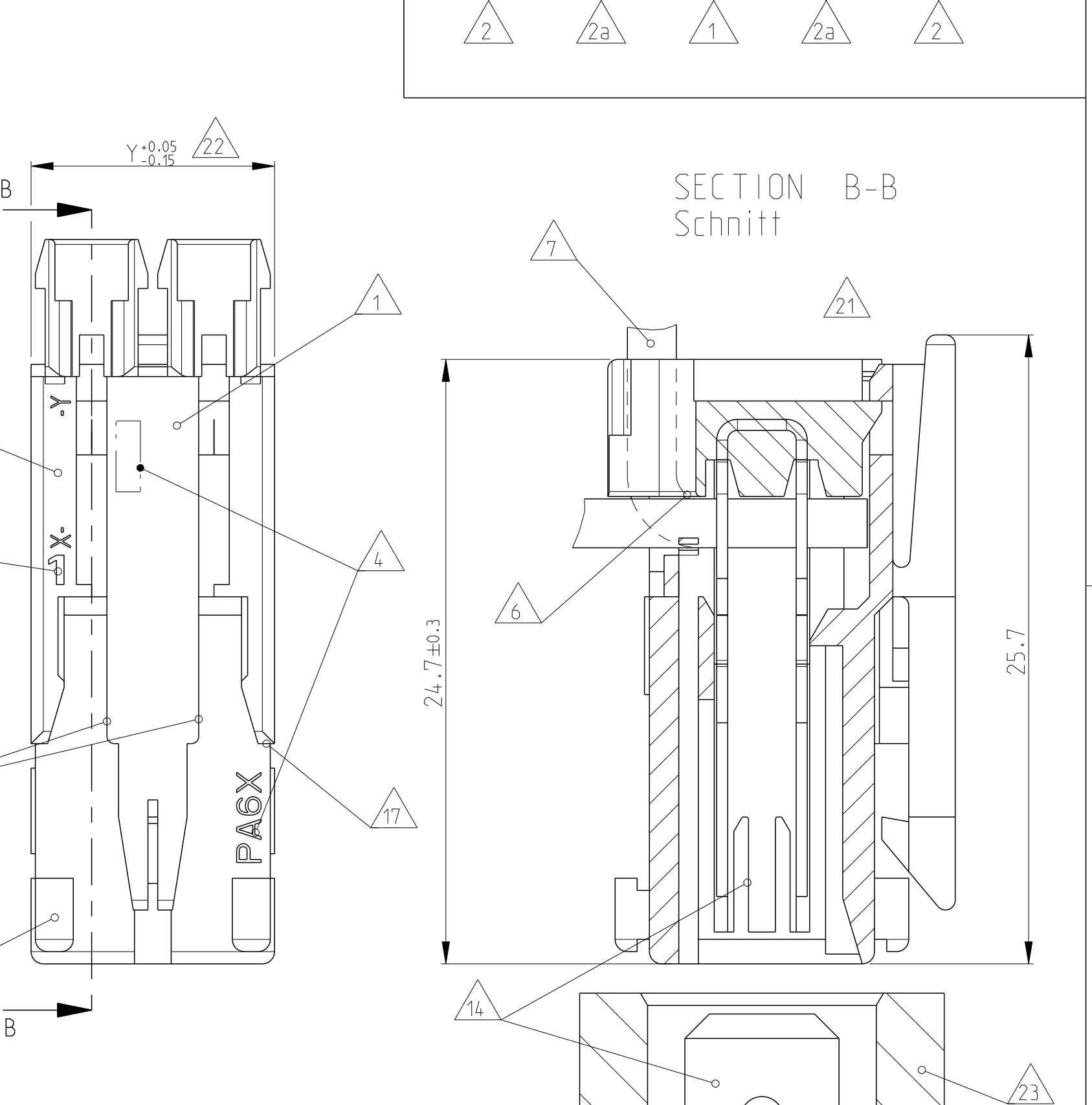
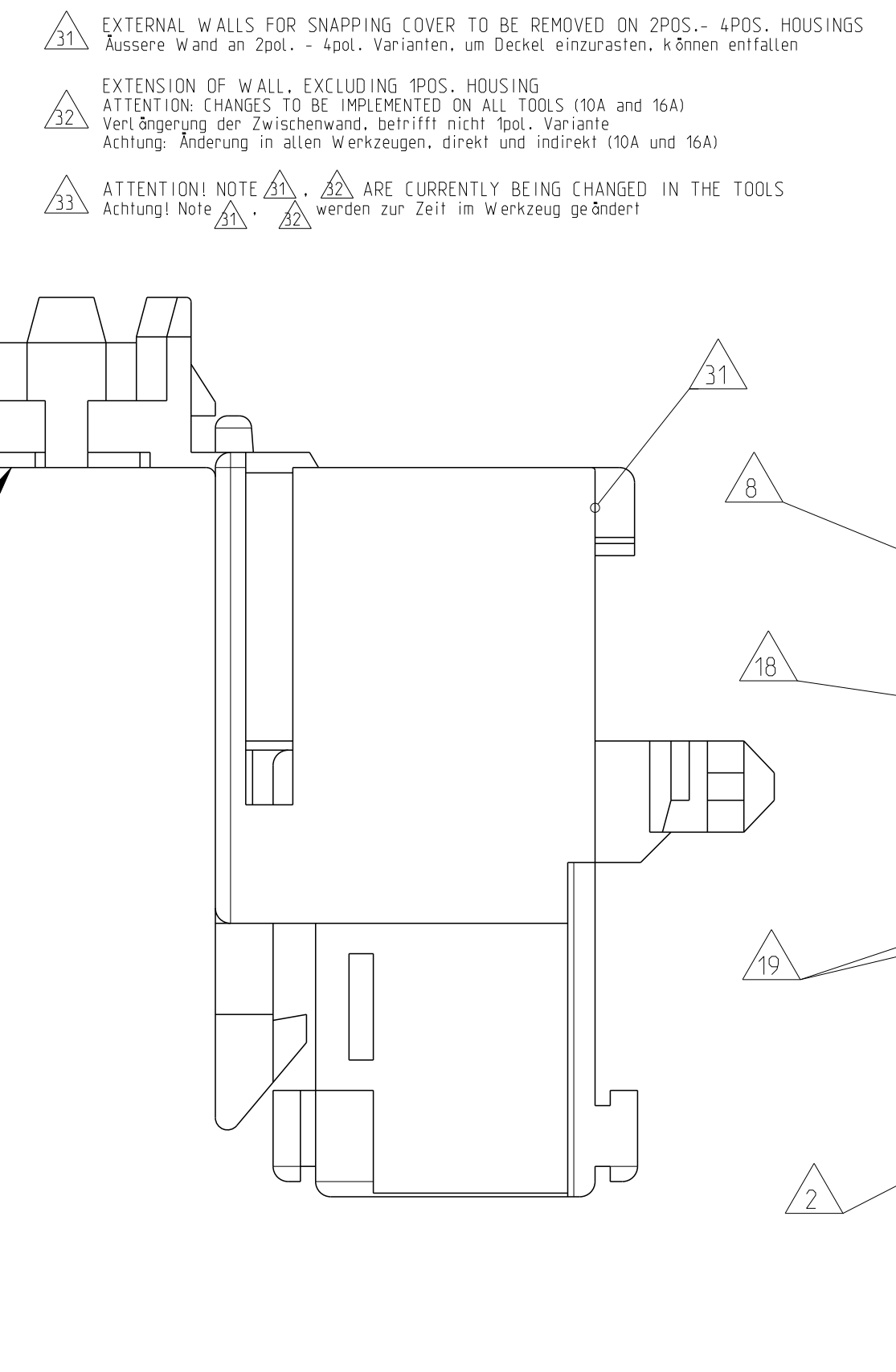
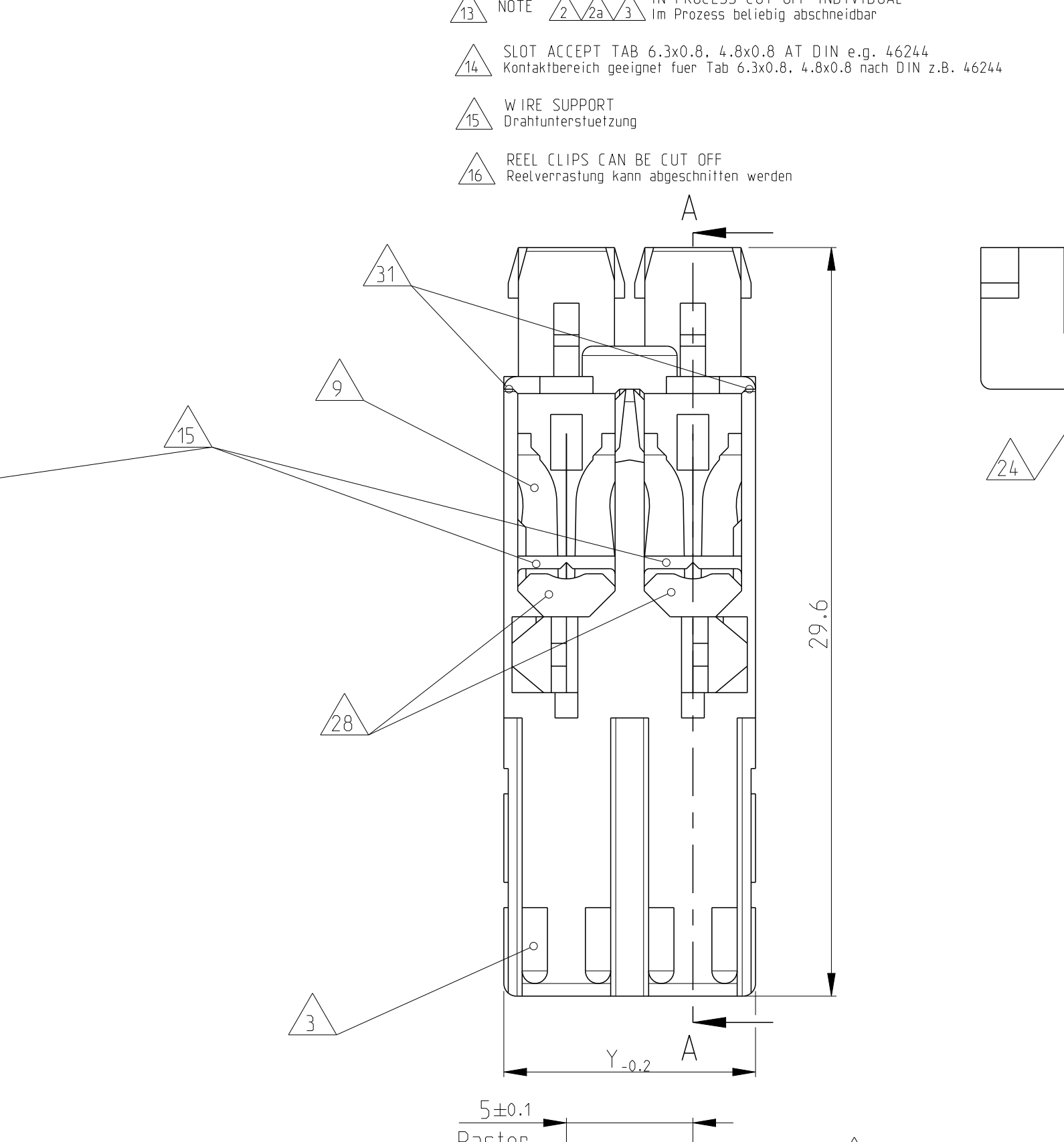
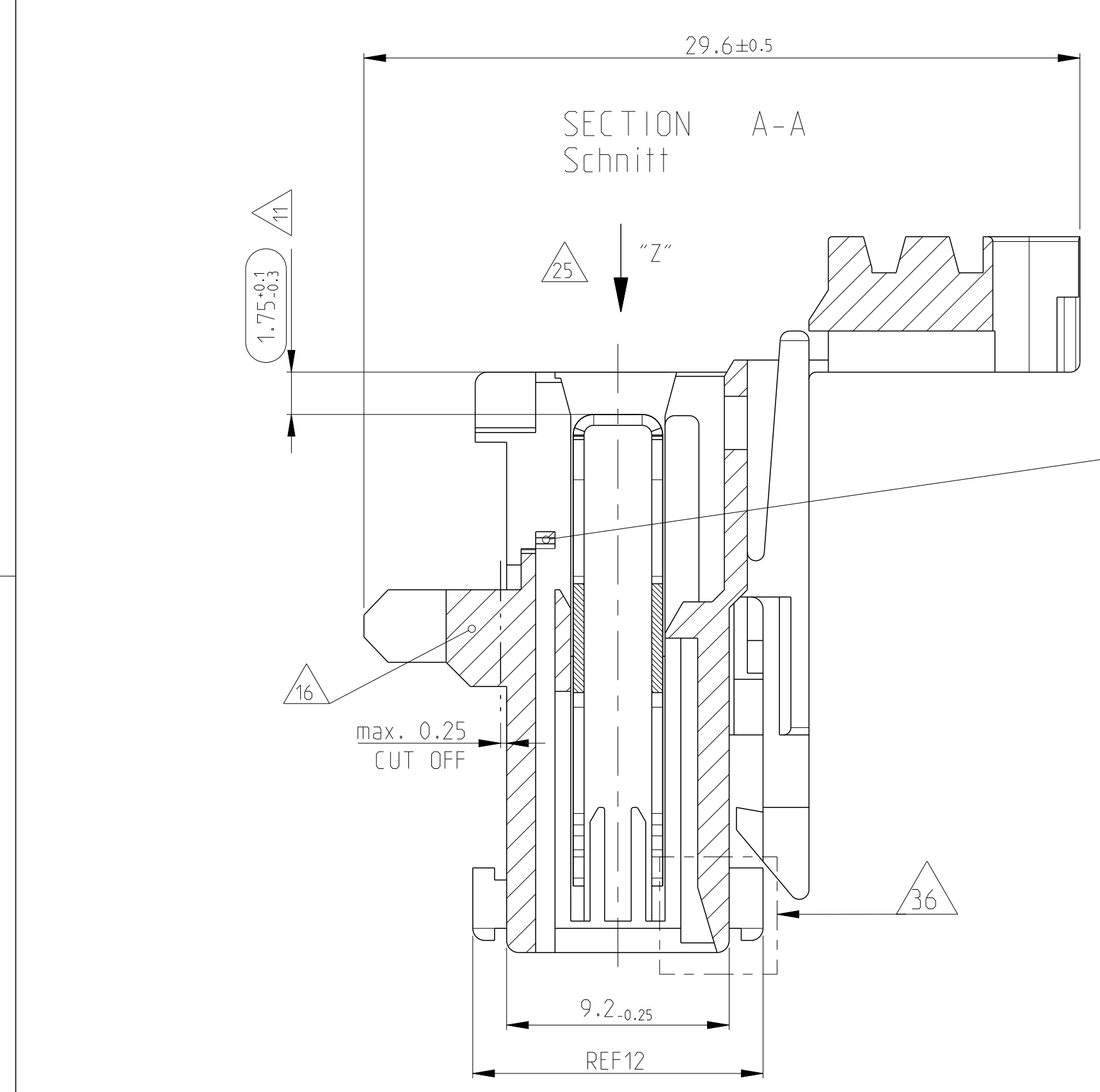
- 1 LOCKING DEVICE BETWEEN CAVITY-NO. Verrastung zwischen Kammer-Nr.
- 2 TYPICAL KEYING RIB Kodierrippen bei erster und letzter Kammer SEE 33
- 2a) TYPICAL KEYING RIB Typische Kodierungsrippen SEE 33
- 3 POLARIZATION RIB (ALL) Polarisierungsrippen (alle) SEE 19
- 4 TE LOGO, MATERIAL DESCRIPTION (PA6.6 / PA6 / PA66) TE LOGO, Materialbezeichnung (PA6.6 / PA6 / PA66)
- 5 MATERIAL PA6 (IGW T 750 °C WITHOUT FLAME) Material PA6 (Gießdrahtprüfung 750 °C ohne Flamme)
- 6 CONNECTOR WITH SINGLE WIRE FOR WIRE RANGE: 1.0-1.5mm? SEE 2 AND APPL. SPEC. NO. 114-18288 Connector mit Einzelanschlag fuer Litze: 1.0-1.5mm? siehe 2 und Appl. Spec. Nr. 114-18288
- 7 STRANDED WIRE BENT TO 90° (ONLY FOR SINGLE WIRE POSSIBLE) Litze 90° gebogen (nur bei Einzelanschlag moeglich)
- 8 TE NO. (HOUSING PN), PRE- AND SUFFIX ONLY TE Nr. (Gehaeuse PN), nur Vor- und Nachstrichzahl
- 9 CAVITY LOADED WITH CONTACT FOR DGB 1.0-1.5mm? (CuNiSi POSTSILVERED) Kammer bestueckt mit Kontakt fuer DGB 1.0-1.5mm? (CuNiSi postsilvered)
- 10 PACKAGING SEE SPEC. 107-18008 Verpackung siehe Verpackungsanweisung 107-18008
- 11 CONTACT POSITION IN CAVITY Kontaktlage in Kammer
- 12 ASS'Y PN, ONLY PRE- AND SUFFIX, ATTENTION: IDENTIFICATION OF THE COMPLETE ASS'Y PN ONLY POSSIBLE WITH PRE-, SUFFIX, MATERIAL AND CHART. THE COMPLETE ASS'Y PN IS VISIBLE ON PACKAGING Ass'y PN nur mit Vor-, Nachstrichzahl, Material- und Tabelle moeglich. Die komplette Ass'y PN ist auf der Verpackung ersichtl.
- 13 NOTE 2, 2a, 3 IN PROCESS CUT OFF INDIVIDUAL Im Prozess betrieb abschniebar
- 14 SLOT ACCEPT TAB 6.3x0.8, 4.8x0.8 AT DIN e.g. 46244 Kontaktbereich geeignet fuer Tab 6.3x0.8, 4.8x0.8 nach DIN z.B. 46244
- 15 WIRE SUPPORT Drahtunterstuetzung
- 16 REEL CLIPS CAN BE CUT OFF Reelverrastung kann abgeschnitten werden

- 17 MATING STOP Tiefenanschlag
- 18 HSG. CAVITY NO.1 Gehaeuse Kammer Nr.1
- 19 SPECIAL LOCKING DEVICE ONLY 2POS. HOUSING Besondere Hakengeometrie nur bei 2Pos. Gehaeuse
- 20 MAX. 4 STRANDED WIRE 1.5mm<sup>2</sup> IF USING CONTACT Max. 4 Litzen 1.5mm<sup>2</sup> bei Bestueckung mit Kontakt
- 21 VIEW WITH CLOSED COVER Ansicht mit geschlossenem Deckel gezeichnet
- 22 EXPANSION OF DIMENSION "Y" AFTER TERMINATION BY USING 4 POS. CONNECTORS WITH 1.5mm<sup>2</sup> STRANDED WIRE SEE APPL. SPEC. Aufweitung "Mass "Y" nach dem Anschlag bei 4pol. Connectoren mit 1.5mm<sup>2</sup> Litze siehe Appl. Spec.
- 23 TE RAST 5 TAB HEADER e.g. PN 521 382-X TE RAST 5 Tab Waenge z.B. PN 521 382-X
- 24 AREA FOR COLOUR MARKING POSSIBLE Platz fuer farbige Markierung moeglich
- 25 KEYING, VIEW AT DIRECTION "Z" Kodierschema, Ansicht in Richtung "Z"
- 26 LOCKING DEVICE INSIDE OF THE HOUSING (ONLY 1POS. HOUSING) Verrastung innerhalb des Gehaeuses (nur bei 1pol. Gehaeusen)
- 27 ONLY ON 16A VERSION (e.g. 1418863), FOR HOOK POSITION SEE BELOW, NO HOOKS ALLOWED ON OUTER WALLS, EXCEPT ON 1POS. HOUSING. Nur 16A Variante (z.B. 1418863). Siehe fuer Hakenposition auch unten bzw. keine Haken an aeuBeren Waengen erlaubt, auBer bei 1pol.
- 28 PN 1418863, 1418864 (16A VERSION) WITH EXTRA WALL IN THE FRONT PN 1418863, 1418864 (16A Variante) mit zusätzlicher Wand vorne
- 29 HOUSING MATERIAL PA6.6, UL-V 2 Gehaeuse Material PA6.6, UL-V 2
- 30 COVER SHOWN WITHOUT HOUSING Deckel wird ohne Gehaeuse gezeigt
- 31 EXTERNAL WALLS FOR SNAPPING COVER TO BE REMOVED ON 2POS.- 4POS. HOUSINGS AeuBere Wand an 2pol., 4pol. Varianten, um Deckel einzurasten, koennen entfallen
- 32 EXTENSION OF WALL, EXCLUDING 1POS. HOUSING ATTENTION: CHANGES TO BE IMPLEMENTED ON ALL TOOLS (10A and 16A) Vert. Eruegerung der Zwischenwand, betrifft nicht 1pol. Variante Achtung: Änderung in allen Werkzeugen, direkt und indirekt (10A und 16A)
- 33 ATTENTION! NOTE 2, 2a, 3 ARE CURRENTLY BEING CHANGED IN THE TOOLS Achtung! Note 2, 2a, 3 werden zur Zeit im Werkzeug geändert

LOC	DIST	REV	DATE	OWN	APVD
A1	-	K4	03JUN11	KK	HMR
		K5	29JUL2015	KD	RR
		K6	10DEC2015	KD	RR
		K7	12OCT2016	FV	RR



ADDITIONAL NOTE SEE SHEET 2 OF 2



2-14 18864-4	2-2178661-4	15	19.95
1-14 18864-4	1-2178661-4	15	19.95
0-14 18864-4	0-2178661-4	15	19.95
1-14 18864-3	1-2178661-3	10	14.95
0-14 18864-3	0-2178661-3	10	14.95
0-14 18864-2	0-2178661-2	5	9.95
0-14 18864-1	0-2178661-1	-	4.95
2-14 18864-4	2-1534073-4	15	19.95
1-14 18864-4	1-1534073-4	15	19.95
0-14 18864-4	0-1534073-4	15	19.95
1-14 18864-3	1-1534073-3	10	14.95
0-14 18864-3	0-1534073-3	10	14.95
0-14 18864-2	0-1534073-2	5	9.95
0-14 18864-1	0-1534073-1	-	4.95
1-14 18863-4	1-1241171-4	15	19.95
0-14 18863-4	0-1241171-4	15	19.95
1-14 18863-3	1-1241171-3	10	14.95
0-14 18863-3	0-1241171-3	10	14.95
0-14 18863-2	0-1241171-2	5	9.95
0-14 18863-1	0-1241171-1	-	4.95

THIS DRAWING IS A CONTROLLED DOCUMENT. DIESER ZEICHNUNGSDRUCK IST EIN KONTROLLIERTES DOKUMENT. ANDERERE DRUCKE SIND UNTERSCHIEDLICH BEWERTEN. DIE ANWENDER SIND FÜR DIE RICHTIGE ANWENDUNG DER DRUCKE VERANTWORTLICH.

OWNER: M. Oeteloch 18AUG2000  
 CHG: G. Bartosch 18AUG2000  
 APVD: Th. Klenner 18AUG2000

NAME: 1-4pos. AMP multifitting Mark II ASSEMBLY PITCH 5mm TAB VERSION

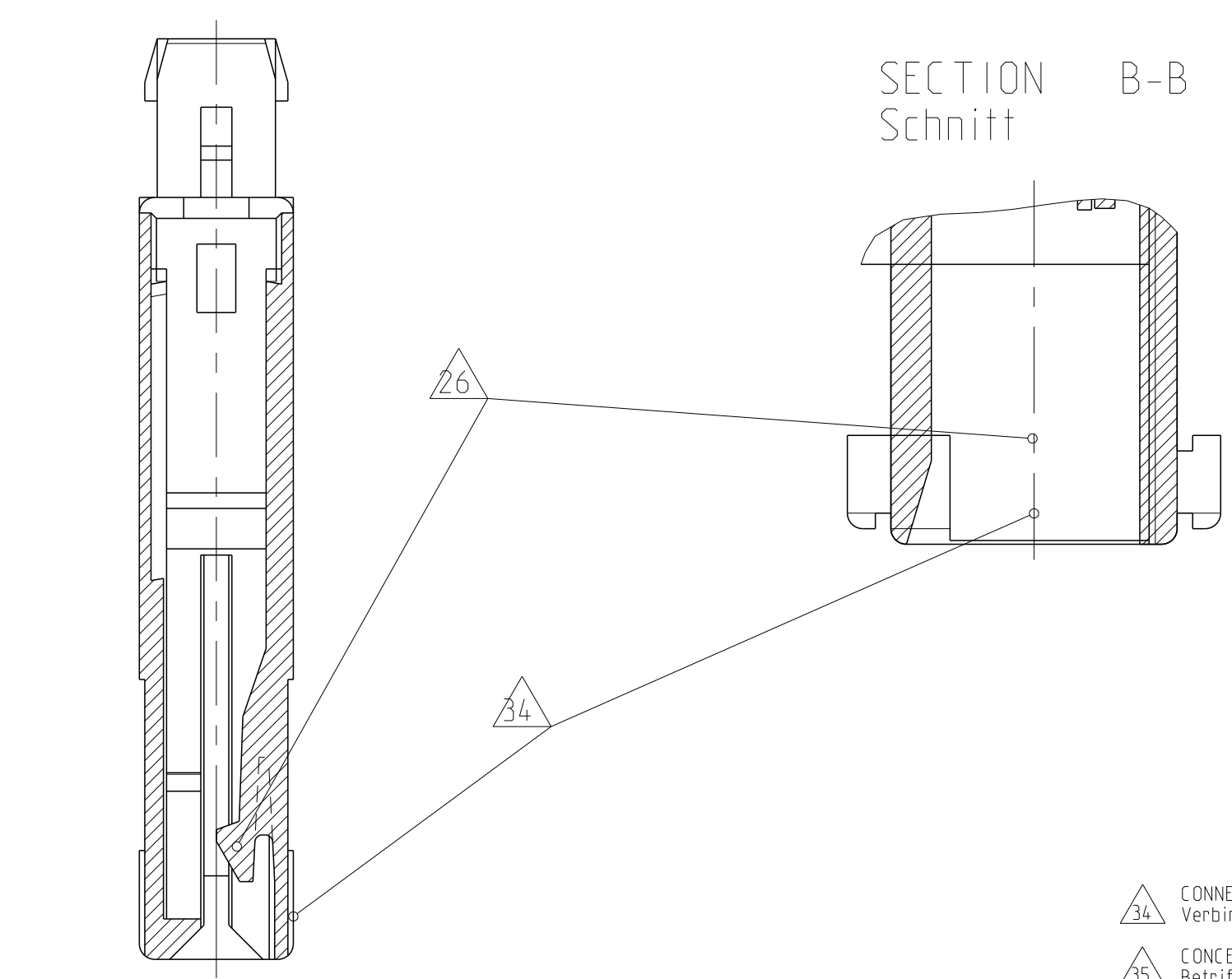
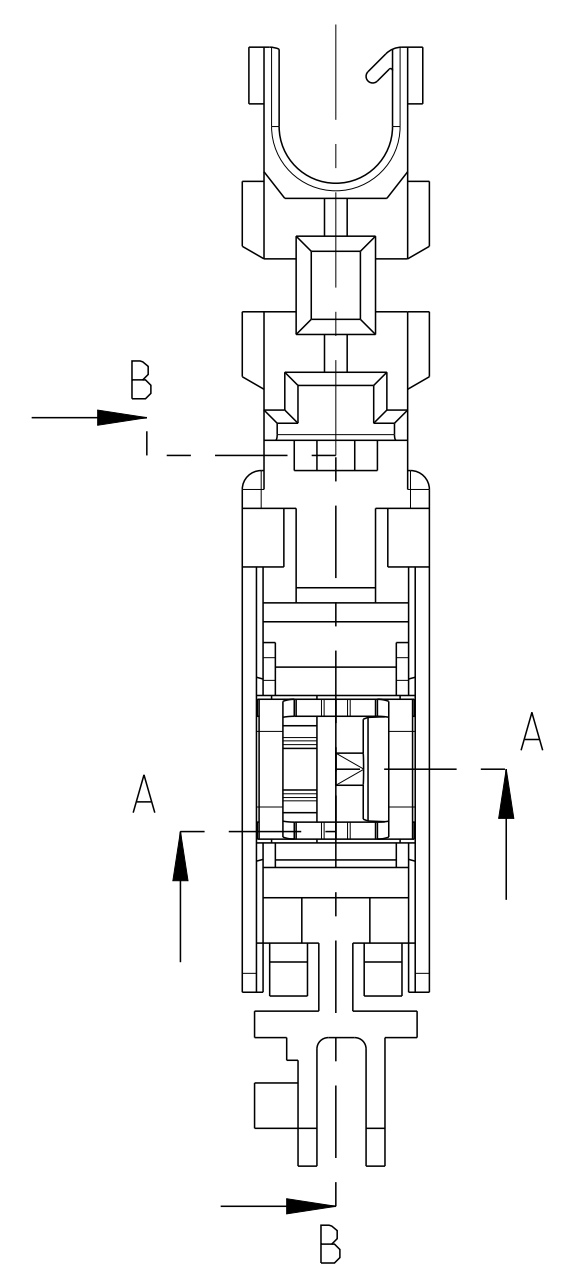
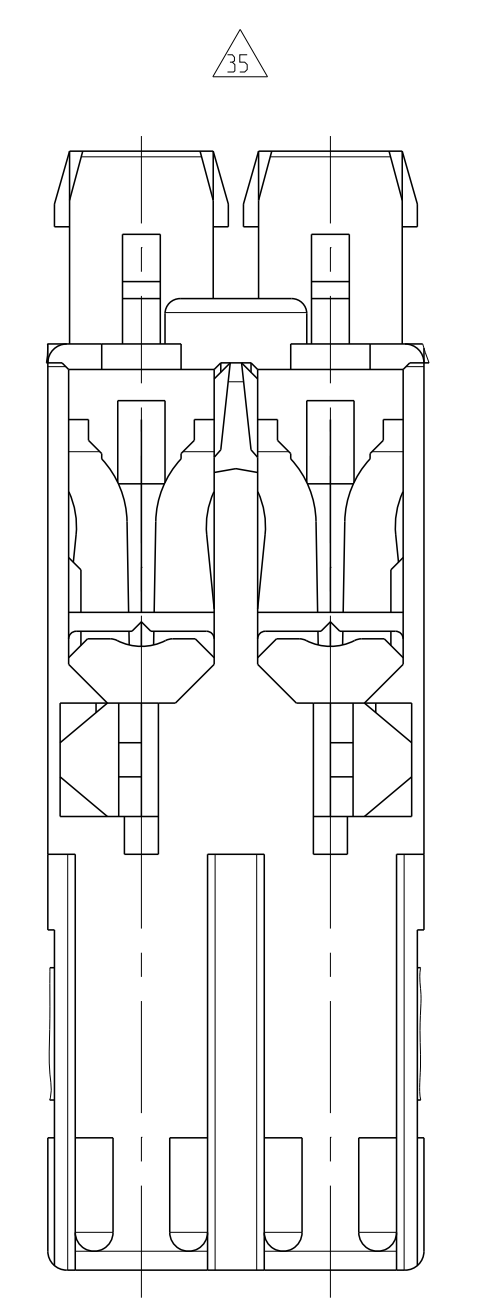
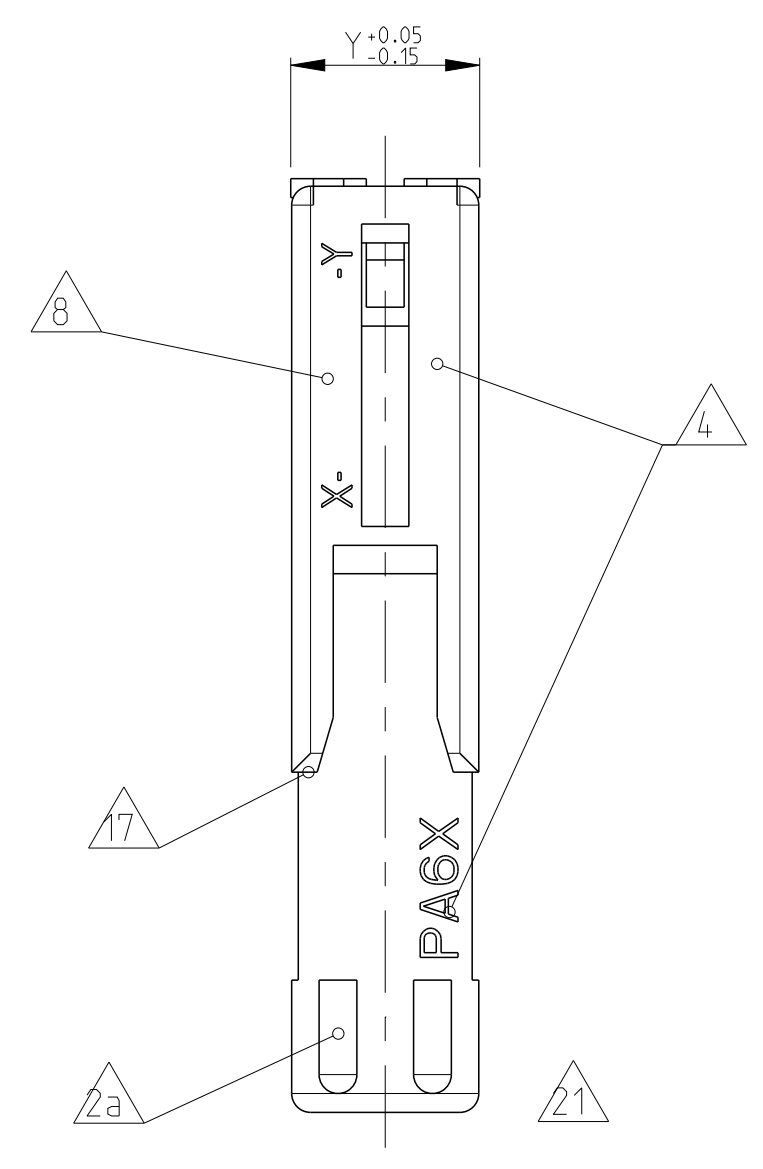
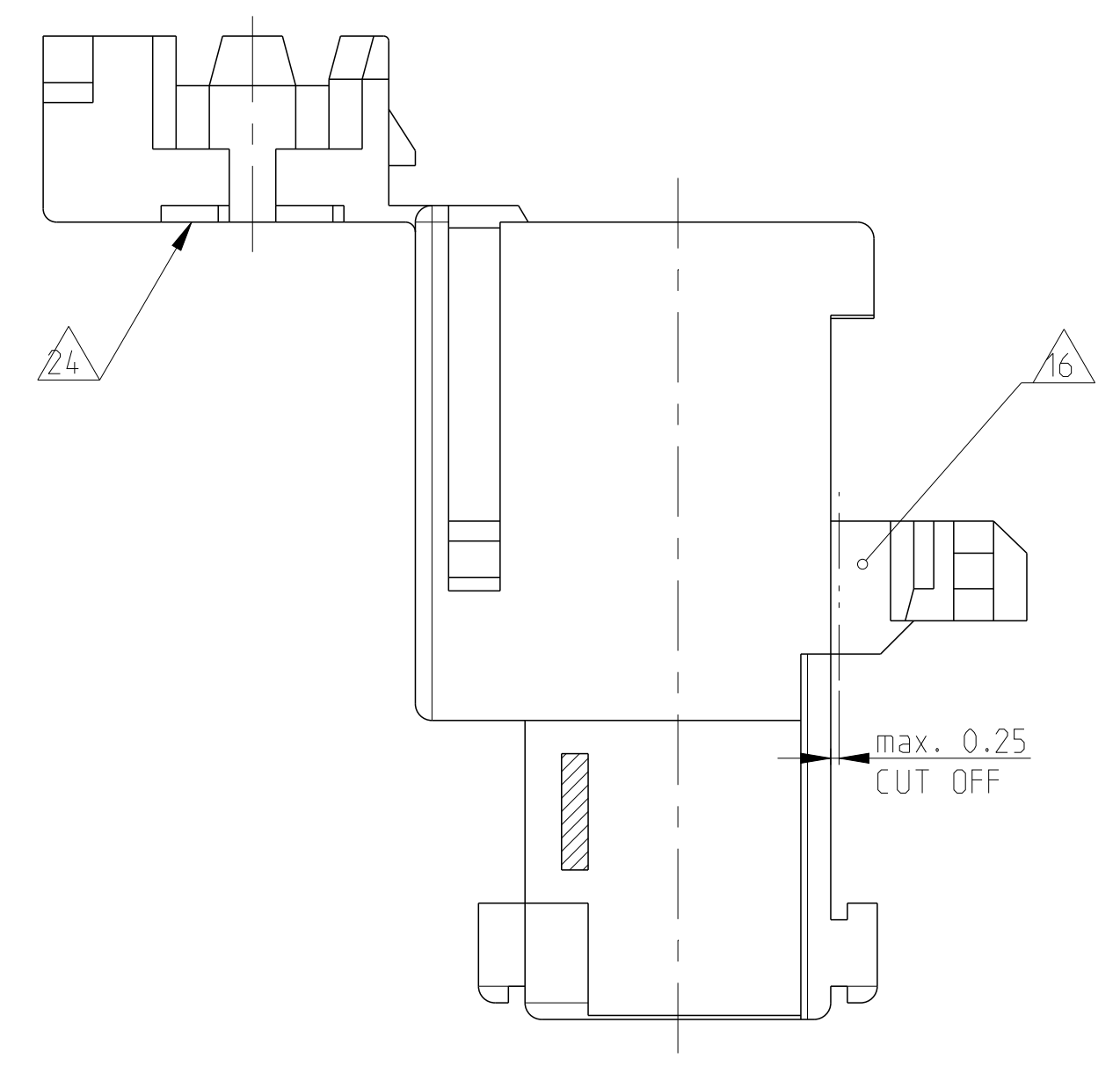
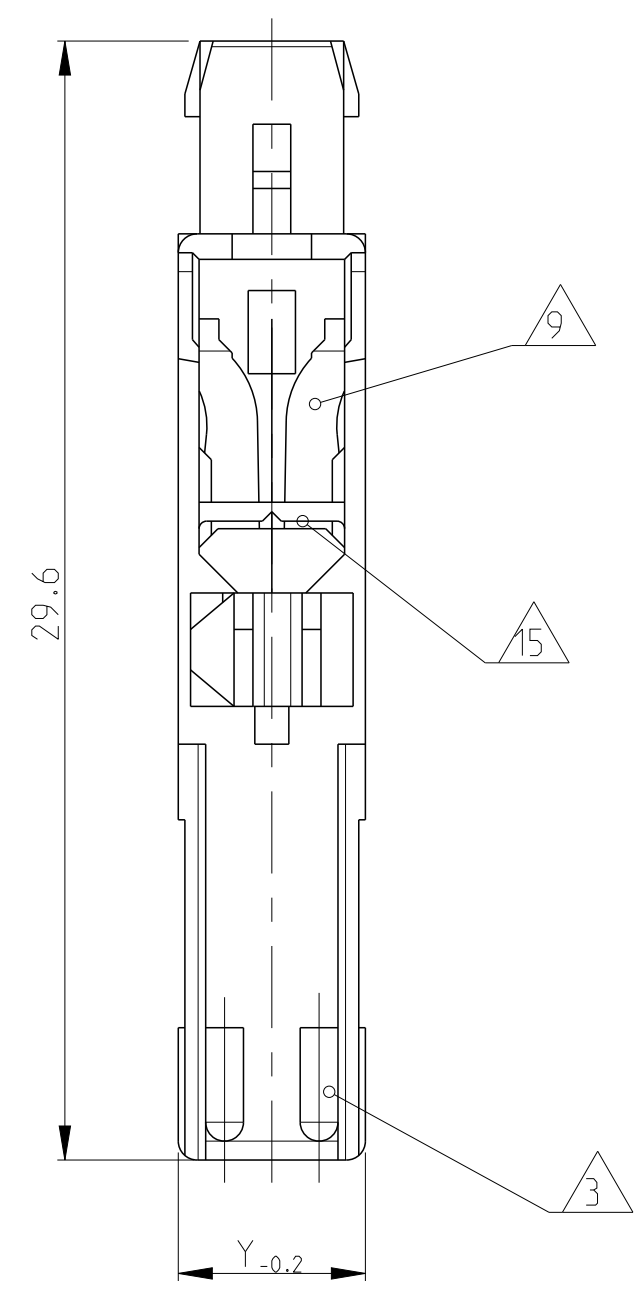
SIZE: A1  
 CAGE CODE: 00779  
 DRAWING NO.: 1241171

RESTRICTED TO: NUR FÜR: -

Customer Drawing /KUNDENZEICHNUNG SCALE: MASSSTAB 5:1 SHEET: BLATT 1 OF 2 REV: K7

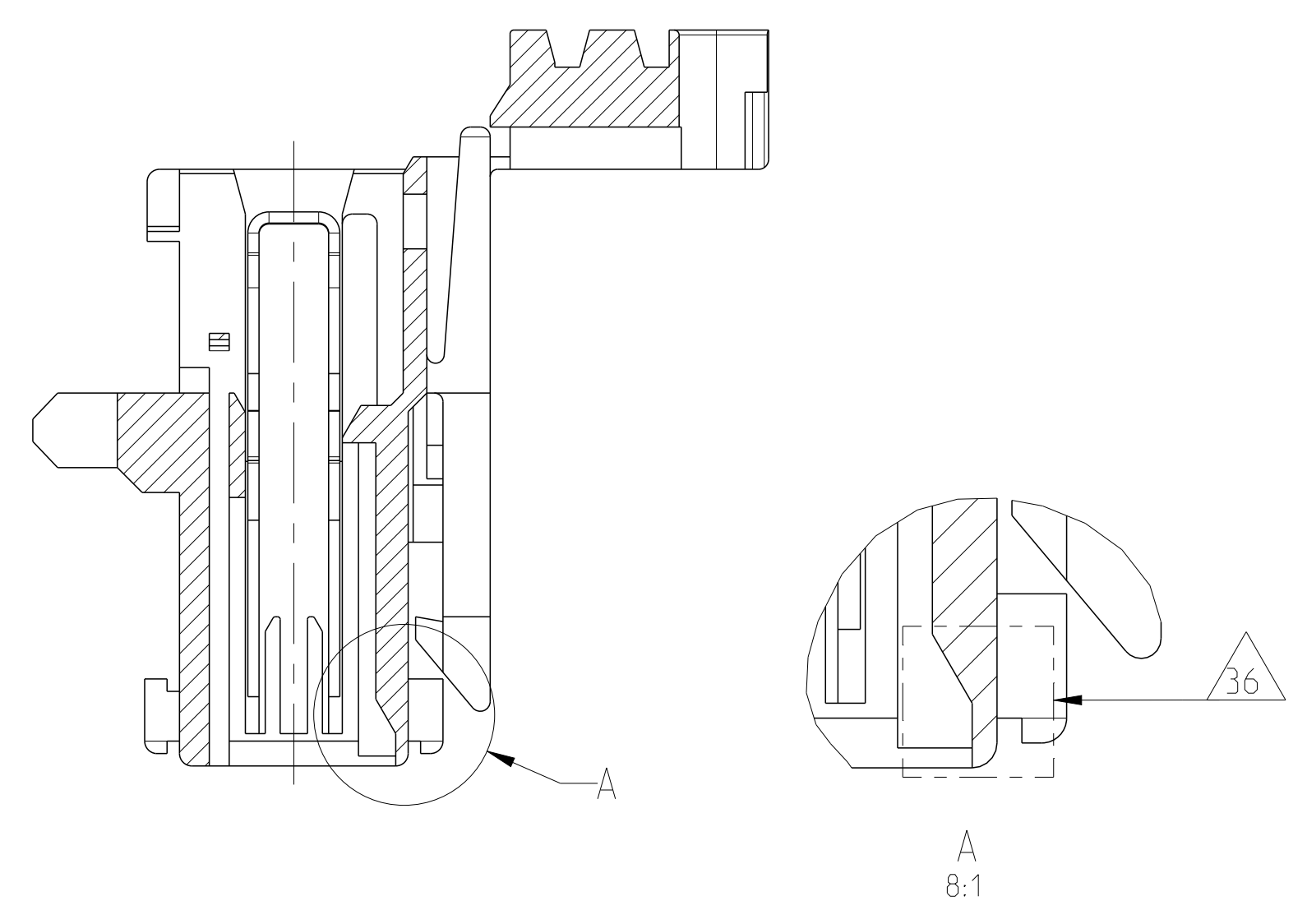


LOC	DIST	REV	DATE	BY	APPV
A1	-	1	-	-	-
PRODUCT NO.:		SEE SHEET 1			



SECTION A-A  
 Schnitt  
 WITHOUT CONTACT  
 Ohne Kontakt

ALTERNATE GEOMETRY IN HOUSING CAVITY 36



- 34 CONNECTION WITH TAB HEADER. SEE PN C97-52824-1000  
 Verbindung mit Tab Wanne, siehe PN C97-52824-1000
- 35 CONCERNS ONLY 2 POS. VERSIONS (CHAMFERS ON MIDDLE WALL ADDED) AND 16 A VERSIONS (WIRE SUPPORT CHANGED)  
 Betrifft nur 2 pol. Varianten (Fase an mittl. Rippe hinzu) und 16A Versionen (Drahtauflage geändert)
- 36 ALTERNATE GEOMETRY IN HOUSING CAVITY IS PERMITTED FOR ALL VERSIONS UNTIL FURTHER NOTICE.  
 SEE SHEET 2 OF 2
- 37 CAVITY LOADED WITH CONTACT FOR DGB 1.0-1.5mm<sup>2</sup> (CuSn32n9 SELECTIVE SILVER)
- 38 -
- 39 -
- 40 -
- 41 PRELIMINARY PART - NOT YET RELEASED FOR PRODUCTION

NOTES & TABLES, SEE SHEET 1  
 Notizen & Tabellen, siehe Blatt 1

THIS DRAWING IS A CONTROLLED DOCUMENT. <small>DEUTSCH: ZEICHNUNGSPRÜFUNG VOR DER DURCHFÜHRUNG VERPFLICHTET.          ANSONSTEN: ZU DEN TECHNISCHEN VERFAHRENSTELLEN UND VERFAHREN          DER ANWENDUNG ZU DEN ANWENDUNGSSTÄNDEN BEZUG NEHMEN UND ANPASSEN.</small>		OWN M. Ofenloch 18AUG2000	TE Connectivity NAME 1-4pos. AMP multifitting Mark II ASSEMBLY PITCH 5mm TAB VERSION
DIMENSIONS: MASSENHEITEN: mm		CHK G. Bartosch 18AUG2000	
TOLERANCES UNLESS OTHERWISE SPECIFIED: ALLE DIMENSIONEN		APVD In Klennen 18AUG2000	PRODUCT SPEC 108-10652 APPLICATION SPEC VERARBEITUNGSSPEZ. 114-10200
MATERIAL -		SIZE A1 CAGE CODE 00779 DRAWING NO. 1241171	RESTRICTED TO NUR FÜR - SCALE MASSSTAB 5:1 SHEET BLATT 2 OF VON 2 REV K7
Customer Drawing		/KUNDENZEICHNUNG	