



Chipsmall Limited consists of a professional team with an average of over 10 year of expertise in the distribution of electronic components. Based in Hongkong, we have already established firm and mutual-benefit business relationships with customers from,Europe,America and south Asia,supplying obsolete and hard-to-find components to meet their specific needs.

With the principle of "Quality Parts,Customers Priority,Honest Operation,and Considerate Service",our business mainly focus on the distribution of electronic components. Line cards we deal with include Microchip,ALPS,ROHM,Xilinx,Pulse,ON,Everlight and Freescale. Main products comprise IC,Modules,Potentiometer,IC Socket,Relay,Connector.Our parts cover such applications as commercial,industrial, and automotives areas.

We are looking forward to setting up business relationship with you and hope to provide you with the best service and solution. Let us make a better world for our industry!



Contact us

Tel: +86-755-8981 8866 Fax: +86-755-8427 6832

Email & Skype: info@chipsmall.com Web: www.chipsmall.com

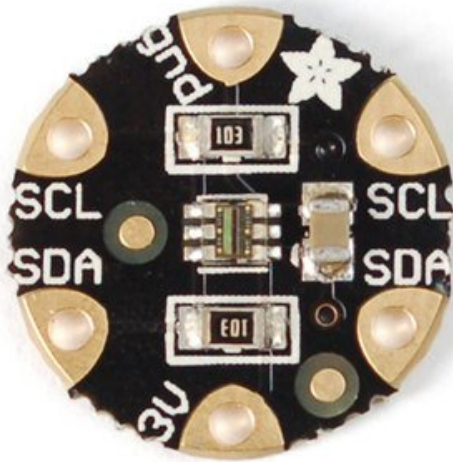
Address: A1208, Overseas Decoration Building, #122 Zhenhua RD., Futian, Shenzhen, China



□

Flora TSL2561 Lux Sensor

Created by Becky Stern



Last updated on 2016-09-30 12:37:59 AM UTC

Guide Contents

Guide Contents	2
Overview	3
Wiring	5
Programming	7
Downloads	10
Files	10



Overview

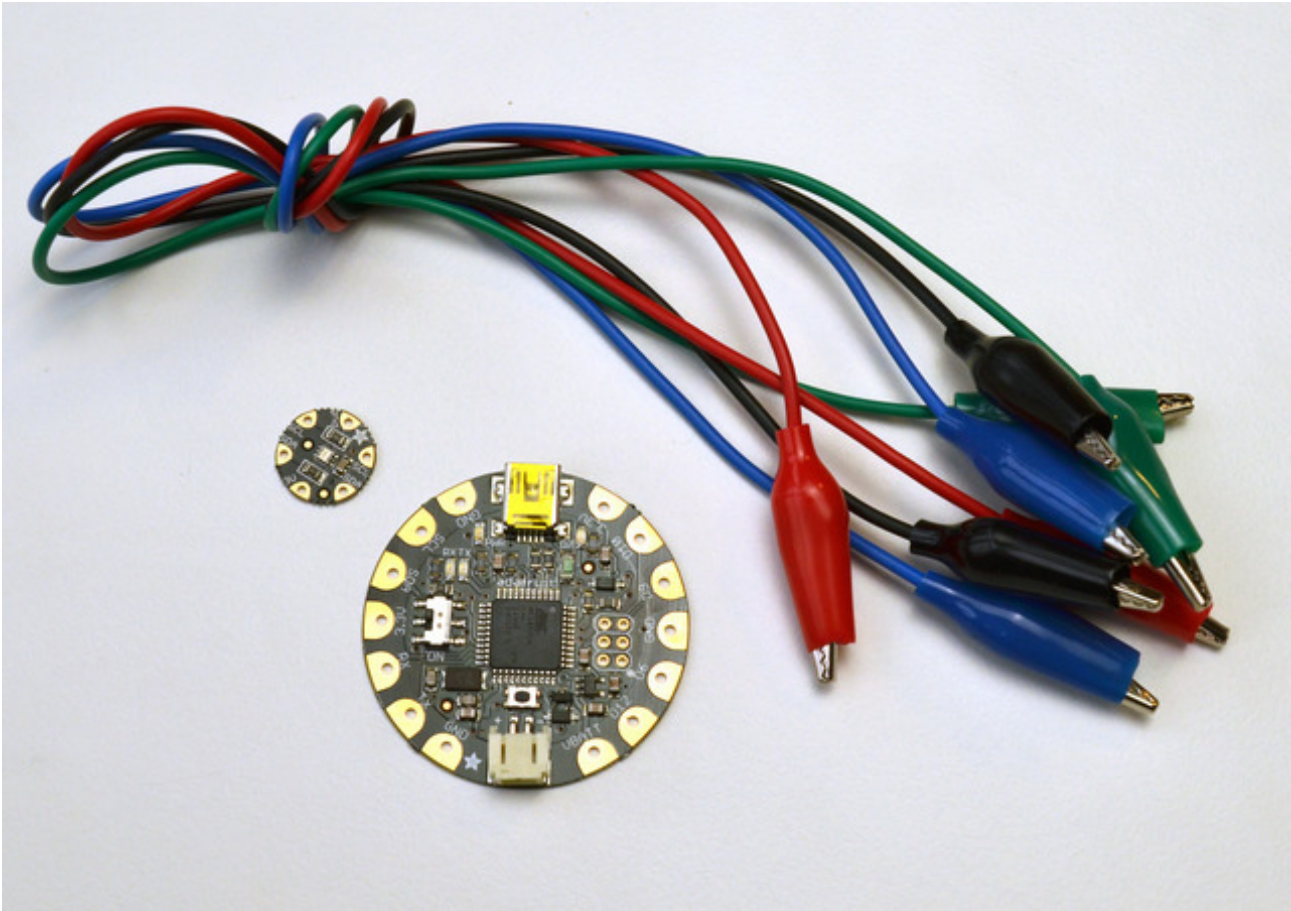
Add light-reactive sensing to your wearable Flora project with this high precision Lux sensor. The TSL2561 luminosity sensor is an advanced digital light sensor, ideal for use in a wide range of light situations. Compared to low cost CdS cells, this sensor is more precise, allowing for exact lux calculations and can be configured for different gain/timing ranges to detect light ranges from up to 0.1 - 40,000+ Lux on the fly. The best part of this sensor is that it contains both infrared and full spectrum diodes! That means you can separately measure infrared, full-spectrum or human-visible light. Most sensors can only detect one or the other, which does not accurately represent what human eyes see (since we cannot perceive the IR light that is detected by most photo diodes).

The sensor has a digital (I2C) interface. Attaching it to the flora is simple: line up the sensor so its adjacent to the SDA/SCL pins and sew conductive thread from the 3V, SDA, SCL and GND pins. They line up perfectly so you will not have any crossed lines.

You can connect up to 3 Flora Lux sensors by making sure that each sensor has a unique I2C address. You set the address with the solder jumpers on the reverse side of the lux sensor. Solder between the center pad and - to set the address to **0x29**, solder between the center pad and + to set the address to **0x49** or leave the pads floating (unsoldered) to use address **0x39**. **WARNING! DON'T SOLDER ALL THREE PADS TOGETHER!** That would make a direct short between 3.3V and Ground!

You can connect other I2C sensors/outputs by using the set of SCL/SDA pins on the opposite side. The current draw is extremely low, about 0.5mA when actively sensing, and less than 15 uA when in powerdown mode.

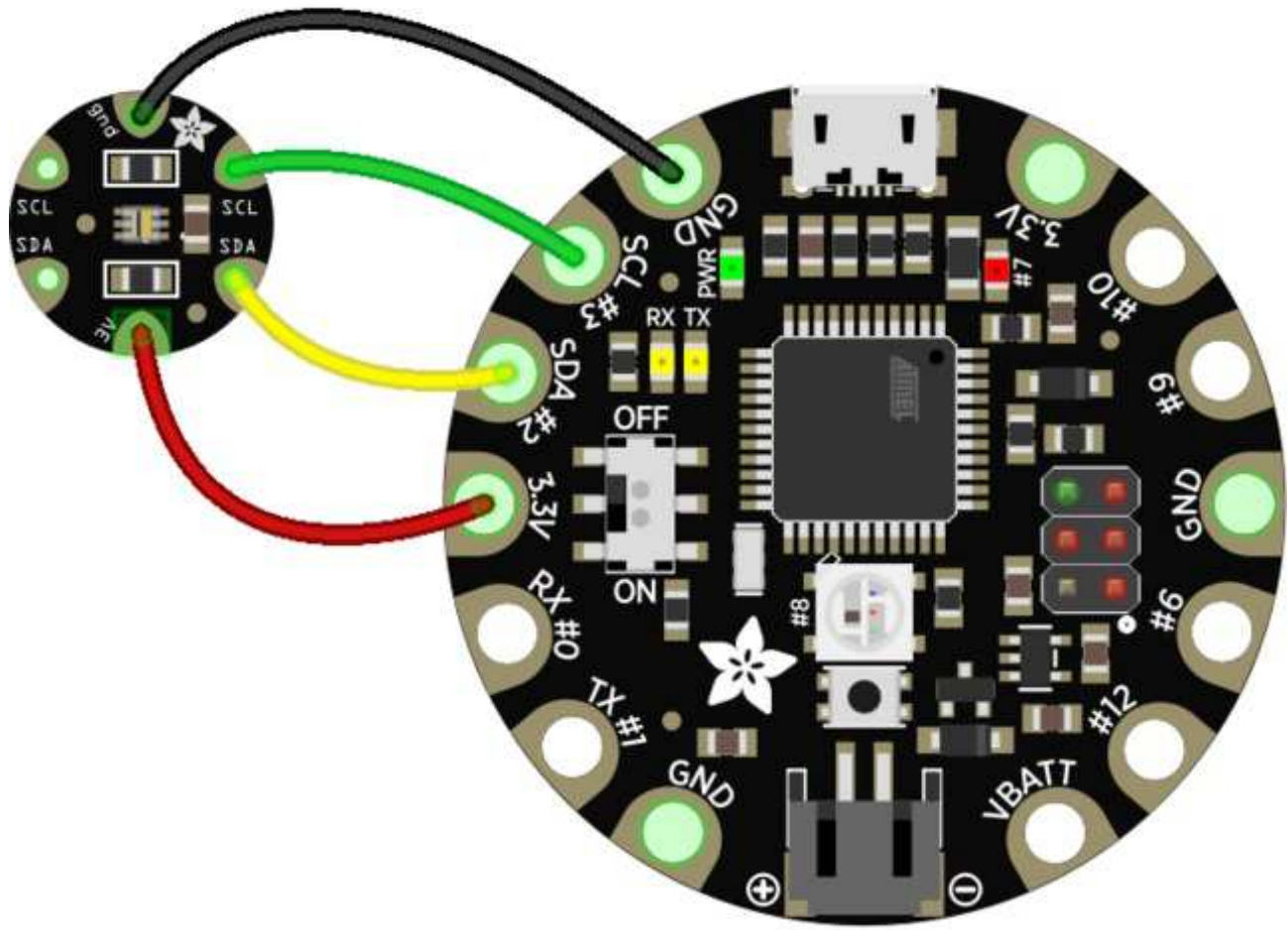
For more technical information about the TSL2561 luminosity sensor, check out the [TSL2561 guide \(http://adafru.it/aZ1\)](http://adafru.it/aZ1) which shows the more conventional breakout Adafruit also makes for this sensor.



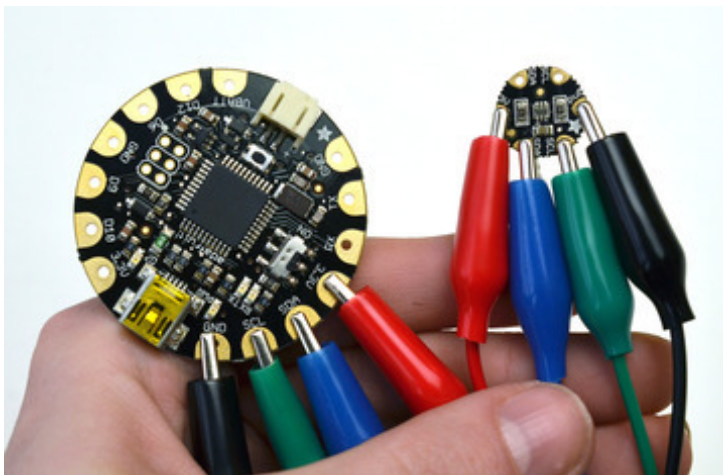
To get started making a soft light-sensing circuit on fabric you will need:

- [Flora main board](http://adafru.it/659) (<http://adafru.it/659>)
- [Flora lux sensor](http://adafru.it/1246) (<http://adafru.it/1246>)
- [Alligator clips](http://adafru.it/1008) (<http://adafru.it/1008>)
- [Conductive thread](http://adafru.it/640) (<http://adafru.it/640>) (2 or 3 ply)
- Fabric inside an embroidery hoop
- [USB A/MiniB cable](http://adafru.it/260) (<http://adafru.it/260>)
- [3xAAA battery holder](http://adafru.it/727) (<http://adafru.it/727>)

Wiring

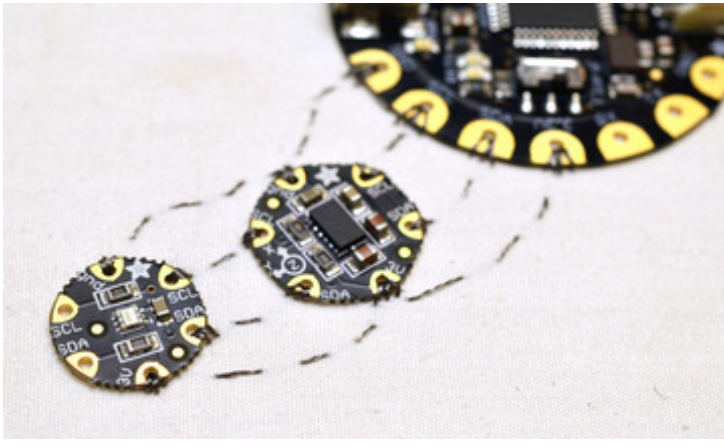


fritzing



To test the sensor before sewing it into a project, use alligator clips to

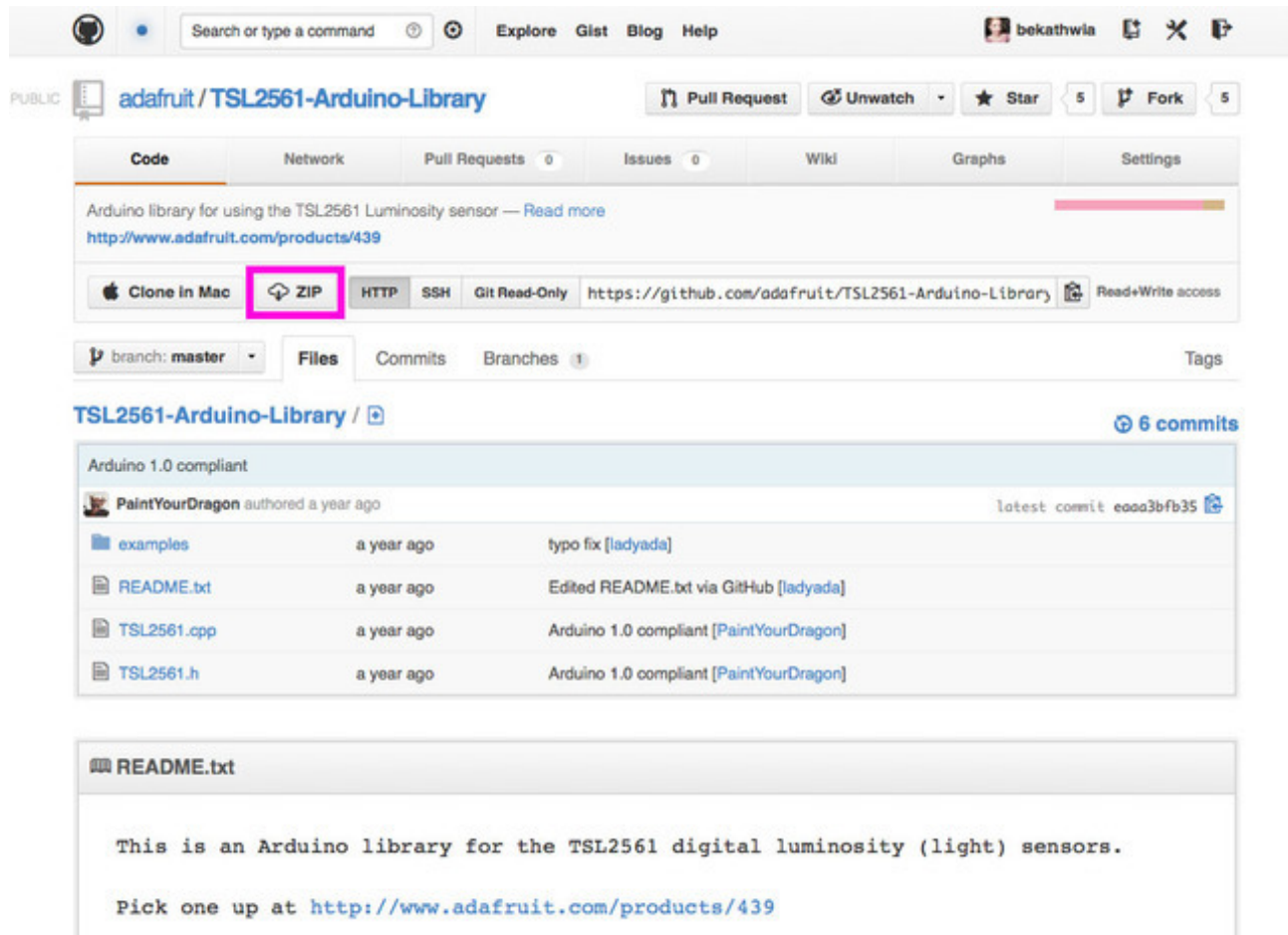
hook up the 3.3v, SDA, SCL, and GND pins.



Stitching the sensor into a project is easy-- just line up the sensor so its adjacent to the SDA/SCL pins on Flora or another I2C sensor, and stitch the four connections with conductive thread. This is covered in more detail in the [Flora Accelerometer](http://adafru.it/aYS) (<http://adafru.it/aYS>) guide and our [Conductive Thread](http://adafru.it/aVx) (<http://adafru.it/aVx>) guide.



Programming



The screenshot shows the GitHub repository page for `adafruit/TSL2561-Arduino-Library`. The repository is public and has 5 stars and 5 forks. The description is "Arduino library for using the TSL2561 Luminosity sensor". The repository is currently on the `master` branch. The file list shows the following files:

File Name	Author	Commit Message
<code>examples</code>	PaintYourDragon	typo fix [ladyada]
<code>README.txt</code>	PaintYourDragon	Edited README.txt via GitHub [ladyada]
<code>TSL2561.cpp</code>	PaintYourDragon	Arduino 1.0 compliant [PaintYourDragon]
<code>TSL2561.h</code>	PaintYourDragon	Arduino 1.0 compliant [PaintYourDragon]

The `README.txt` file content is as follows:

```
This is an Arduino library for the TSL2561 digital luminosity (light) sensors.  
  
Pick one up at http://www.adafruit.com/products/439
```

To use this sensor and calculate Lux, there's a lot of very hairy and unpleasant math. [You can check out the math in the datasheet \(http://adafru.it/aJR\)](http://adafru.it/aJR) but really, its not intuitive or educational - its just how the sensor works. So we took care of all the icky math and wrapped it up into a nice Arduino library. <http://adafru.it/aZ9>

[You can find the Arduino library repository on github \(http://adafru.it/aZ9\)](http://adafru.it/aZ9) To install it, click this button to download the compressed ZIP file then install it. [This guide \(http://adafru.it/aYM\)](http://adafru.it/aYM) will help you with the install process if you have never installed an Arduino library.

[Download the Adafruit TSL2561 Library http://adafru.it/d7d](http://adafru.it/d7d)

You will also need the [Adafruit Sensor Library \(http://adafru.it/aZm\)](http://adafru.it/aZm) if you do not already have it installed. You can download it by clicking this button to get the compressed Zip. Then install as you did above.

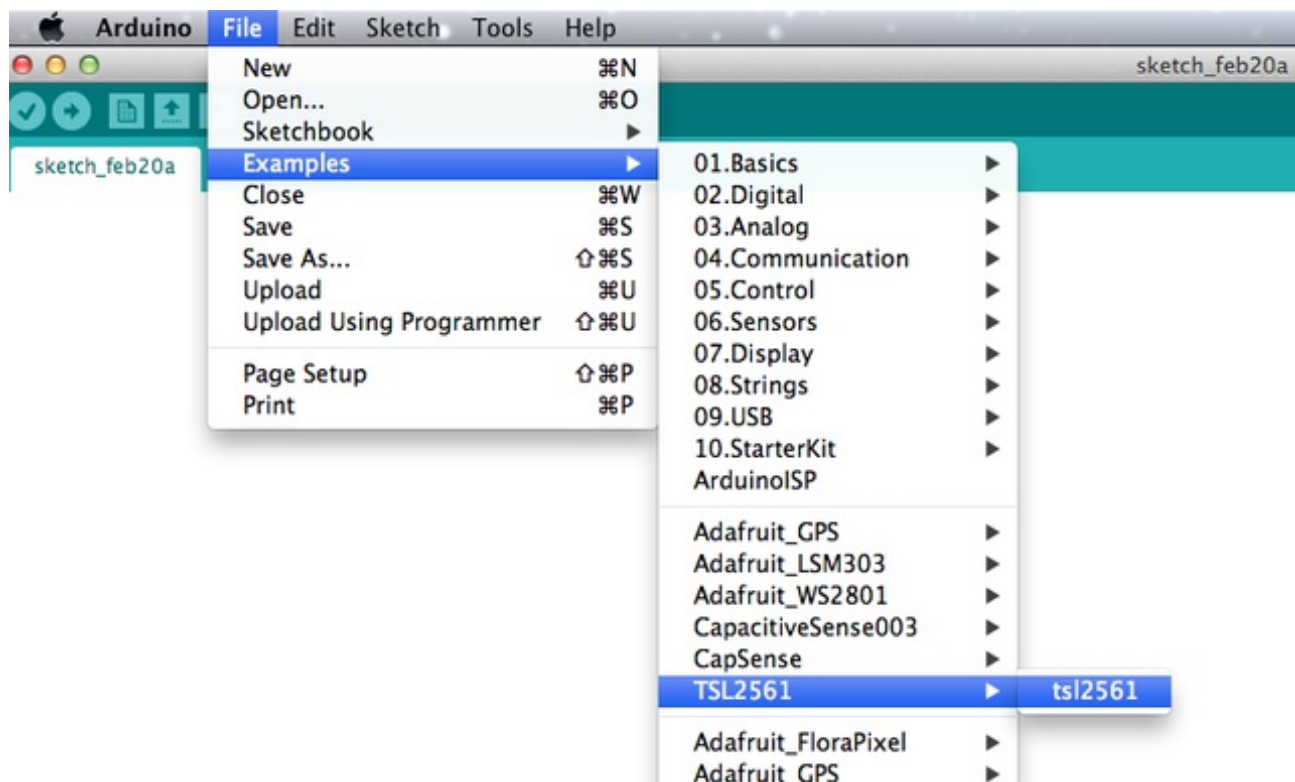
[Download the Adafruit Sensor Library](#)

<http://adafru.it/cMO>

Restart the IDE

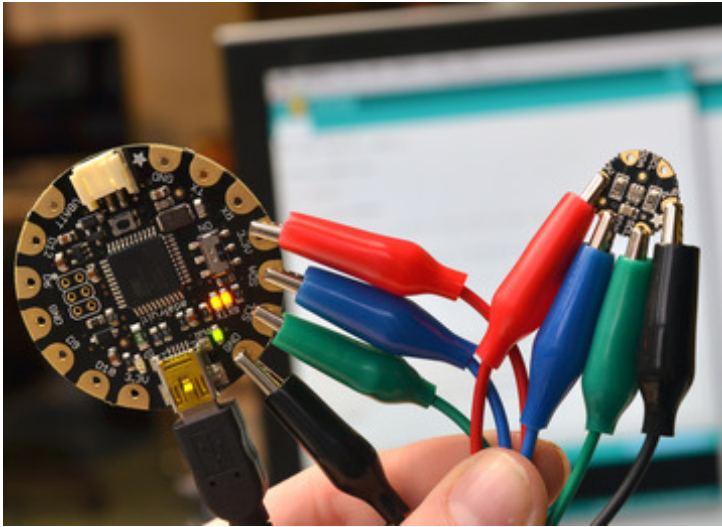
Now you can run the **File->Examples->Adafruit_TSL2561->sensorapi** example program which will read and calculate the lux readings for you.

Open up the serial monitor at 9600 baud to see the measurements. Use a lamp or your hand to illuminate/shade the sensor to see the values change.



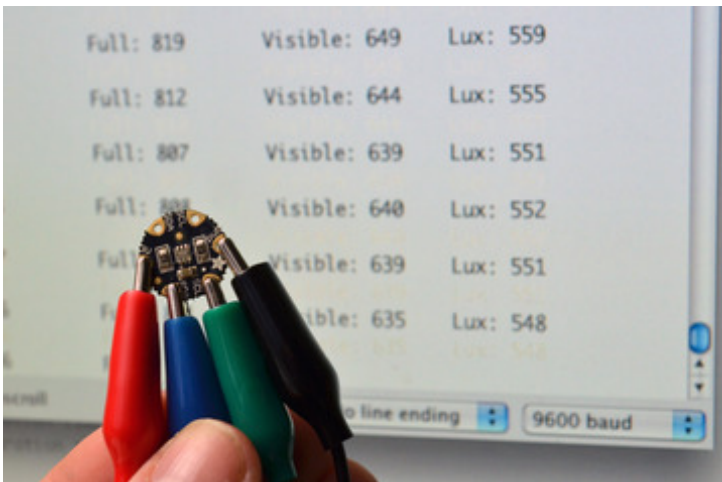
Open the example sketch by navigating to File->Examples->TSL2561->tsl2561.

Be sure you have the proper serial port and board selected in the Adafruit Arduino IDE. For more information about programming



Flora, be sure to read our [Getting Started with FLORA](#) (<http://adafru.it/aSZ>) guide.

Upload the example sketch to your Flora.



Open the serial monitor (the upper right button in the Arduino IDE) and watch the sensor values pour in.



Try covering the sensor with your hand or holding it closer to a light source to see the values change.



Downloads

Files

- [TSL2561 Datasheet \(http://adafru.it/aJS\)](http://adafru.it/aJS)
- [TSL2561 Driver v2.0 \(Unified Sensor Driver\) \(http://adafru.it/aZ9\)](http://adafru.it/aZ9) - See [http://learn.adafruit.com/tsl2561/use \(http://adafru.it/c7O\)](http://learn.adafruit.com/tsl2561/use) for installation instructions
- [TSL2561 Driver v1.0 on github \(obsolete!\) \(http://adafru.it/aJT\)](http://adafru.it/aJT)
- [Fritzing objects in the Adafruit Fritzing library \(http://adafru.it/aP3\)](http://adafru.it/aP3)
- [EagleCAD PCB files for the Flora version \(http://adafru.it/rEj\)](http://adafru.it/rEj)

