



Chipsmall Limited consists of a professional team with an average of over 10 year of expertise in the distribution of electronic components. Based in Hongkong, we have already established firm and mutual-benefit business relationships with customers from,Europe,America and south Asia,supplying obsolete and hard-to-find components to meet their specific needs.

With the principle of "Quality Parts,Customers Priority,Honest Operation,and Considerate Service",our business mainly focus on the distribution of electronic components. Line cards we deal with include Microchip,ALPS,ROHM,Xilinx,Pulse,ON,Everlight and Freescale. Main products comprise IC,Modules,Potentiometer,IC Socket,Relay,Connector.Our parts cover such applications as commercial,industrial, and automotives areas.

We are looking forward to setting up business relationship with you and hope to provide you with the best service and solution. Let us make a better world for our industry!



## Contact us

Tel: +86-755-8981 8866 Fax: +86-755-8427 6832

Email & Skype: info@chipsmall.com Web: www.chipsmall.com

Address: A1208, Overseas Decoration Building, #122 Zhenhua RD., Futian, Shenzhen, China



# 124B

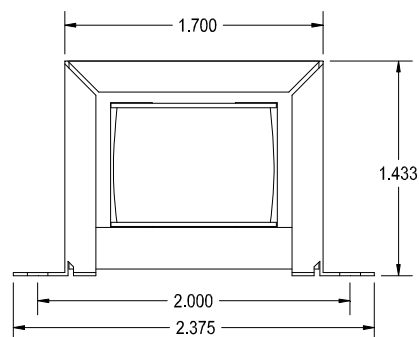
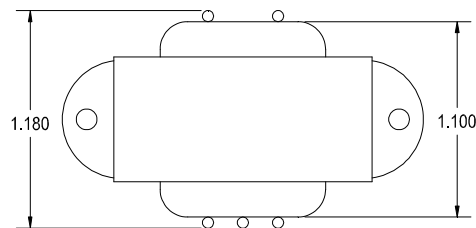
## TUBE DRIVER - INTERSTAGE TRANSFORMER

The minimum frequency range this transformer operates in is 150 Hz to 15 KHz.

Designed for general purpose or replacement use in single ended or phase inverter tube driver circuits


Open style, 2 point mount with minimum 5" long leads

Core material 49% Nickel Steel laminations for better low end response.



### ELECTRICAL SPECIFICATIONS

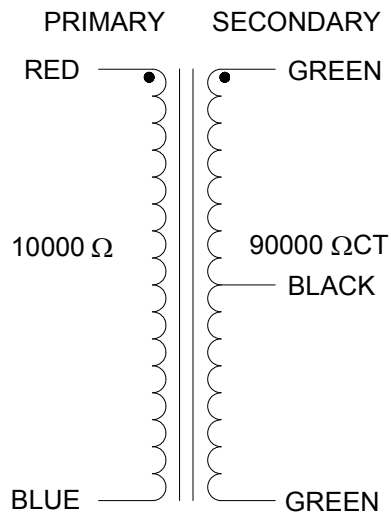
Characteristic	Typical
Input Impedance	10,000 $\Omega$
Output Impedance	90,000 $\Omega$ CT
Output Power	5.0 Watts
DCR	
Primary	405 $\Omega$
Secondary	1525 $\Omega$
Inductance	@ 1.0 kHz, 1.0 V OC
Primary	28 H
Secondary	108 H
Leakage Inductance	0.11 H
Impedance	@ 1.0 kHz, 1.0 V OC
Primary	175 k $\Omega$
Secondary	675 k $\Omega$
Frequency Response	$\pm 1$ db from 150Hz to 15KHz
Turns ratio	1:3
Dielectric Strength	500 Vrms



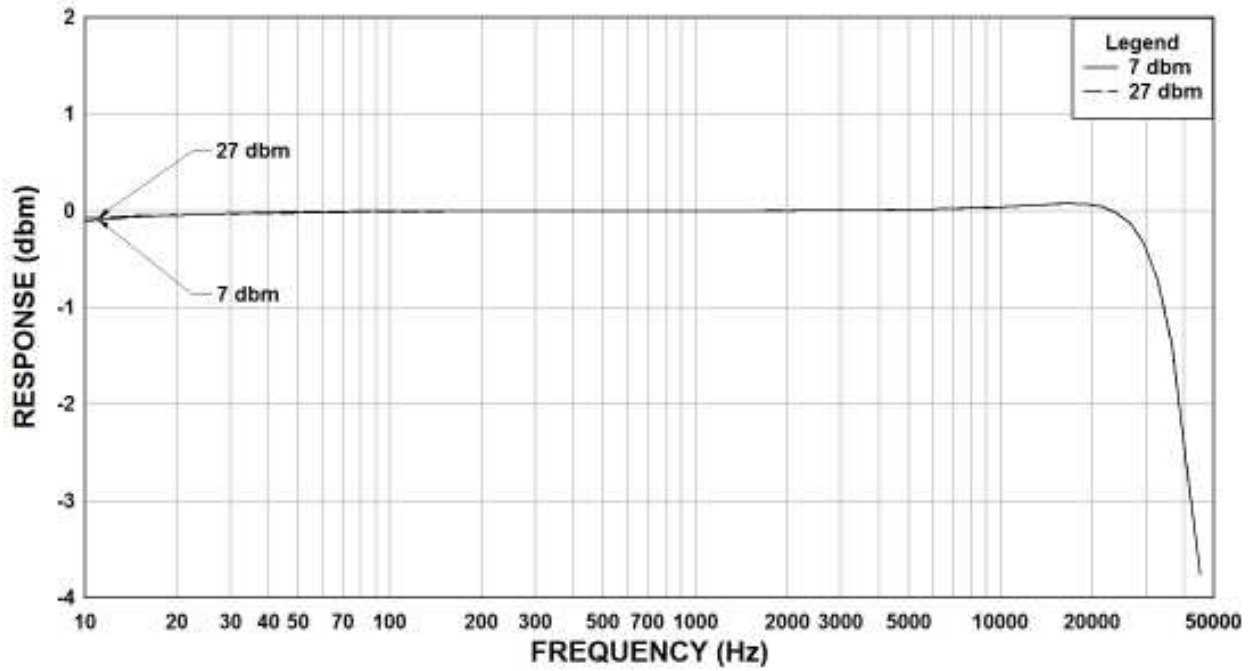
## 124B

5W 150Hz - 15kHz  
 RED - BLU: 10000 $\Omega$   
 GRN - BLK - GRN: 90000 $\Omega$ CT  
 MADE IN CANADA

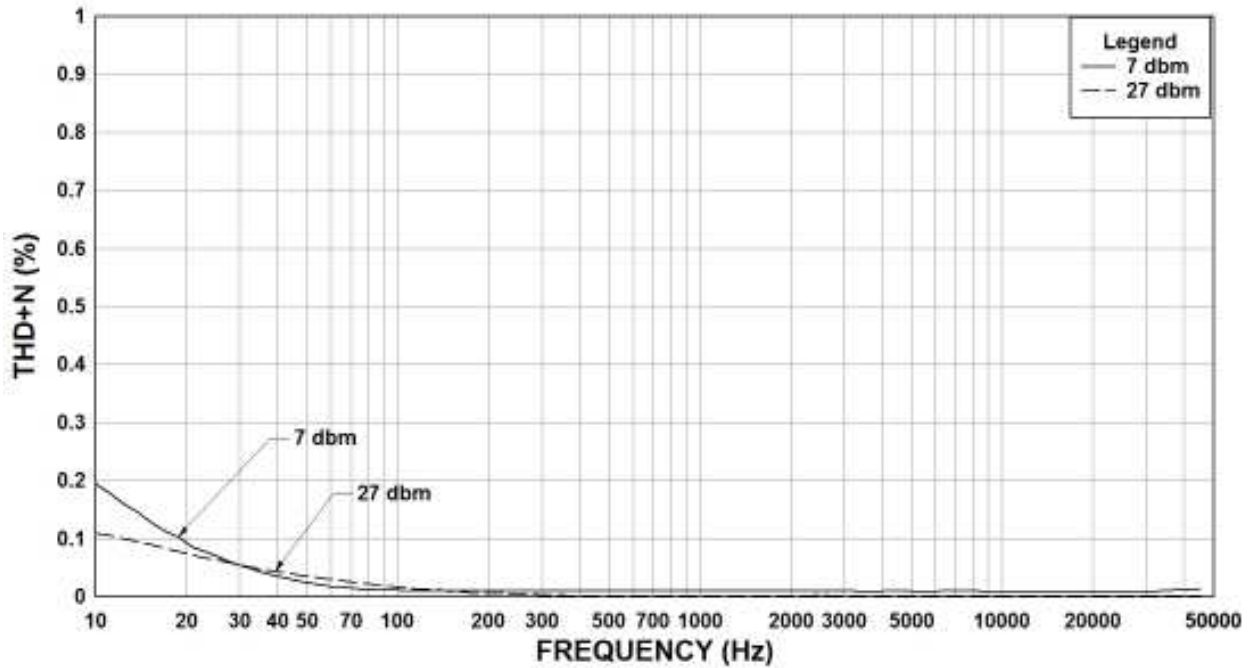
### SCHEMATIC DIAGRAM



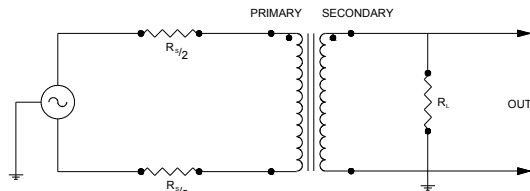
124B Rs=10K, RI=90K Frequency Response



124B Rs=10K, RI=90K THD+N



TYPICAL TEST CIRCUIT



Measurement instruments  
 Hp4192a impedance analyzer  
 Hp3456a DVM  
 Keithley 2002 DVM  
 D scope series iii audio analyzer

This drawing and the information in it is the property of Hammond Manufacturing. It may not be reproduced, transmitted or used in any manner whatsoever without the written permission of Hammond Manufacturing. Data subject to change without notice.