



Chipsmall Limited consists of a professional team with an average of over 10 year of expertise in the distribution of electronic components. Based in Hongkong, we have already established firm and mutual-benefit business relationships with customers from,Europe,America and south Asia,supplying obsolete and hard-to-find components to meet their specific needs.

With the principle of “Quality Parts,Customers Priority,Honest Operation,and Considerate Service”,our business mainly focus on the distribution of electronic components. Line cards we deal with include Microchip,ALPS,ROHM,Xilinx,Pulse,ON,Everlight and Freescale. Main products comprise IC,Modules,Potentiometer,IC Socket,Relay,Connector.Our parts cover such applications as commercial,industrial, and automotives areas.

We are looking forward to setting up business relationship with you and hope to provide you with the best service and solution. Let us make a better world for our industry!



Contact us

Tel: +86-755-8981 8866 Fax: +86-755-8427 6832

Email & Skype: info@chipsmall.com Web: www.chipsmall.com

Address: A1208, Overseas Decoration Building, #122 Zhenhua RD., Futian, Shenzhen, China

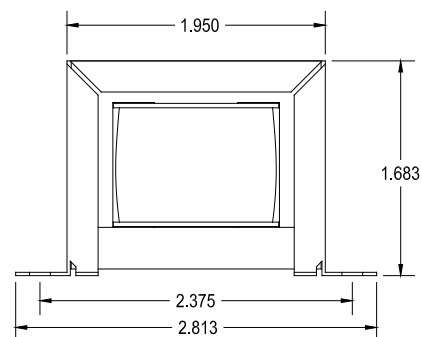
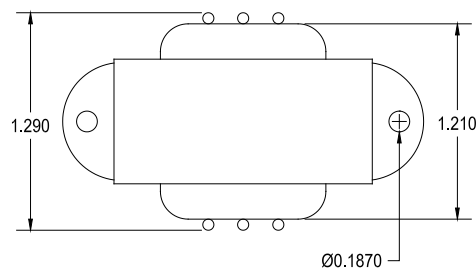


124D

TUBE DRIVER - INTERSTAGE TRANSFORMER

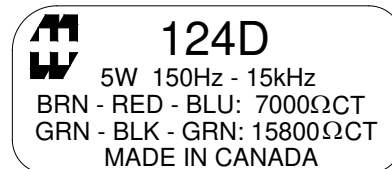
This transformer operates in the 150 Hz to 15 KHz range.
Designed for general purpose or replacement use in single ended
or phase inverter tube driver circuits

Open style, 2 point mount with minimum 5" long leads
Core material Grain Oriented Silicone Steel laminations

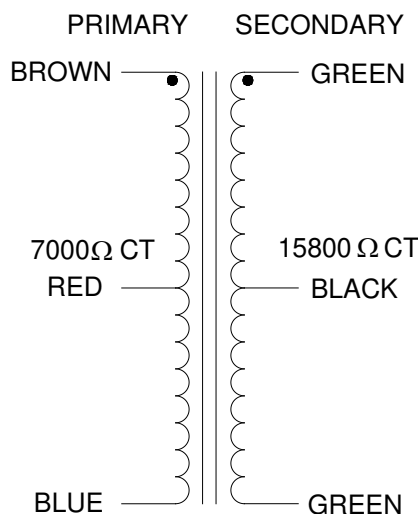


ELECTRICAL SPECIFICATIONS

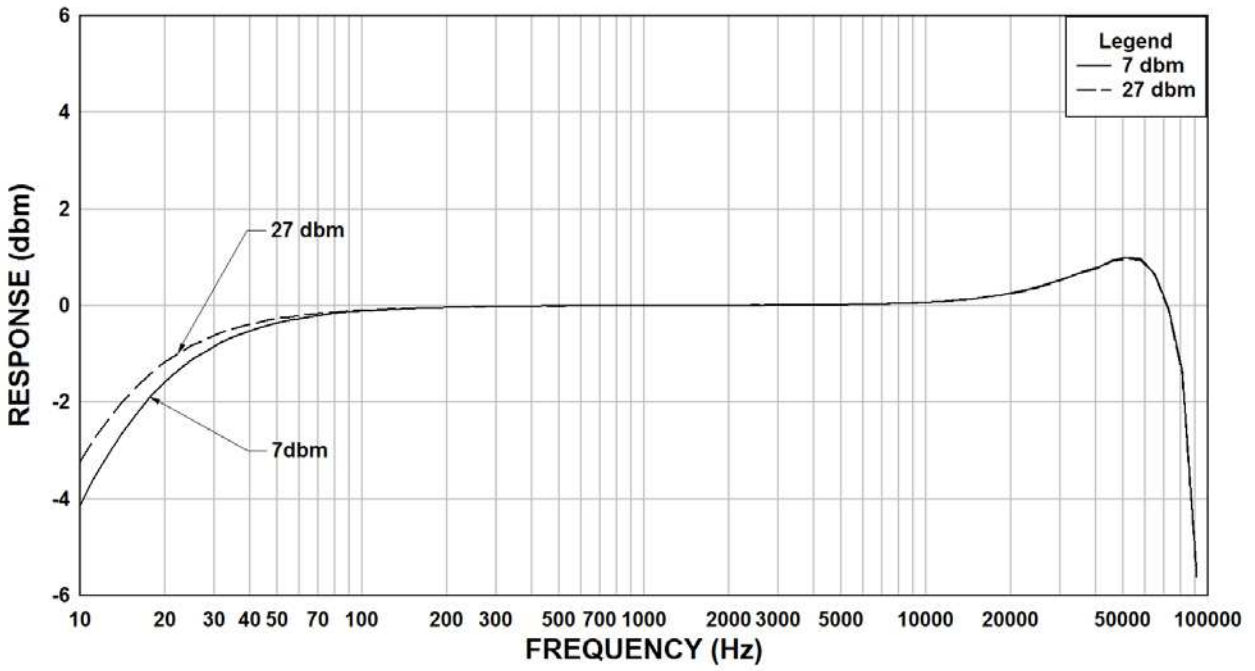
Characteristic	Typical
Input Impedance	7,000 ΩCT
Output Impedance	15,800 ΩCT
Output Power	5.0 Watts
DCR	
Primary	
BLU – RED	218 Ω
RED – BRN	236 Ω
Secondary	
GRN – BLK	297 Ω
BLK – GRN	394 Ω
Inductance	@ 1.0 kHz, 1.0 V OC
Primary	6.45 H
Secondary	14.4 H
Leakage Inductance	0.125 H
Impedance	@ 1.0 kHz, 1.0 V OC
Primary	40.5 KΩ
Secondary	90.25 KΩ
Frequency Response	±1db from 150Hz to 15Hz
Turns ratio	1:1.49
Dielectric Strength	500 Vrms



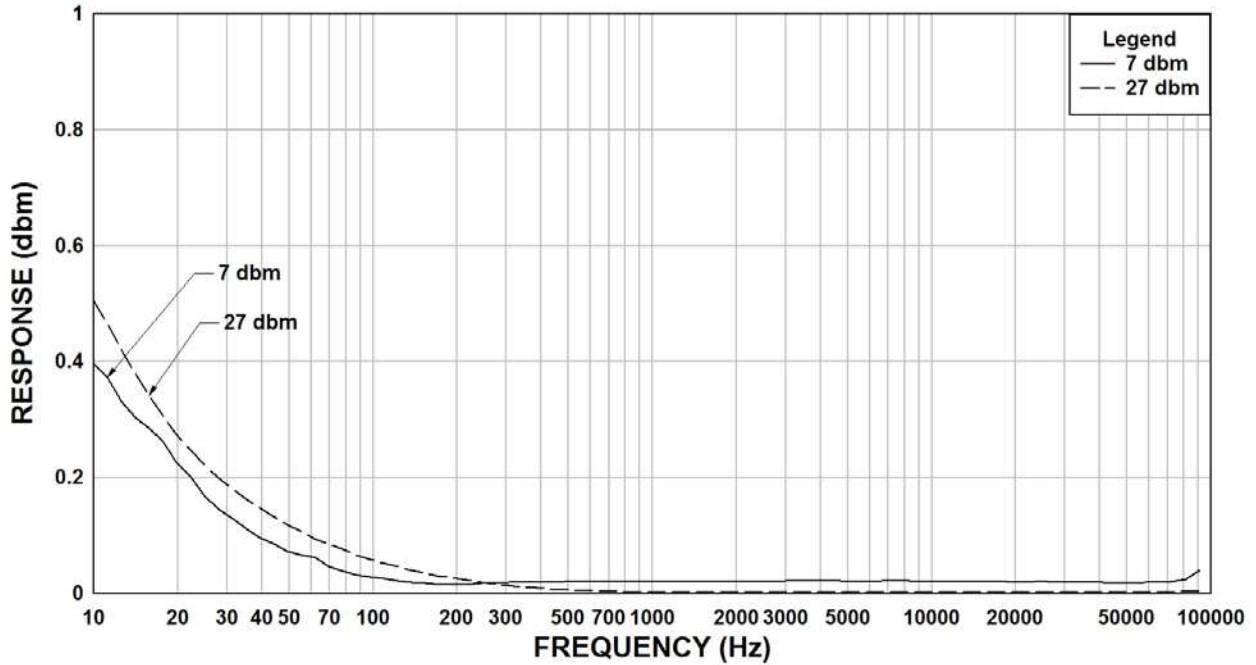
SCHEMATIC DIAGRAM



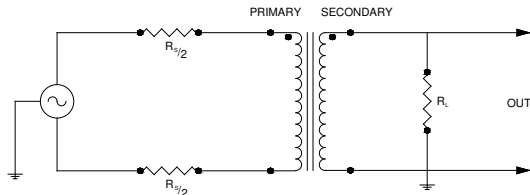
124D Rs=7K, RI=15.8K Frequency Response



124D Rs=7K, RI=15.8K THD+N



TYPICAL TEST CIRCUIT



Measurement instruments
 Hp4192a impedance analyzer
 Hp3456a DVM
 Keithley 2002 DVM
 D scope series iii audio analyzer

This drawing and the information in it is the property of Hammond Manufacturing. It may not be reproduced, transmitted or used in any manner whatsoever without the written permission of Hammond Manufacturing. Data subject to change without notice.