

Chipsmall Limited consists of a professional team with an average of over 10 year of expertise in the distribution of electronic components. Based in Hongkong, we have already established firm and mutual-benefit business relationships with customers from,Europe,America and south Asia,supplying obsolete and hard-to-find components to meet their specific needs.

With the principle of “Quality Parts,Customers Priority,Honest Operation,and Considerate Service”,our business mainly focus on the distribution of electronic components. Line cards we deal with include Microchip,ALPS,ROHM,Xilinx,Pulse,ON,Everlight and Freescale. Main products comprise IC,Modules,Potentiometer,IC Socket,Relay,Connector.Our parts cover such applications as commercial,industrial, and automotives areas.

We are looking forward to setting up business relationship with you and hope to provide you with the best service and solution. Let us make a better world for our industry!



Contact us

Tel: +86-755-8981 8866 Fax: +86-755-8427 6832

Email & Skype: info@chipsmall.com Web: www.chipsmall.com

Address: A1208, Overseas Decoration Building, #122 Zhenhua RD., Futian, Shenzhen, China

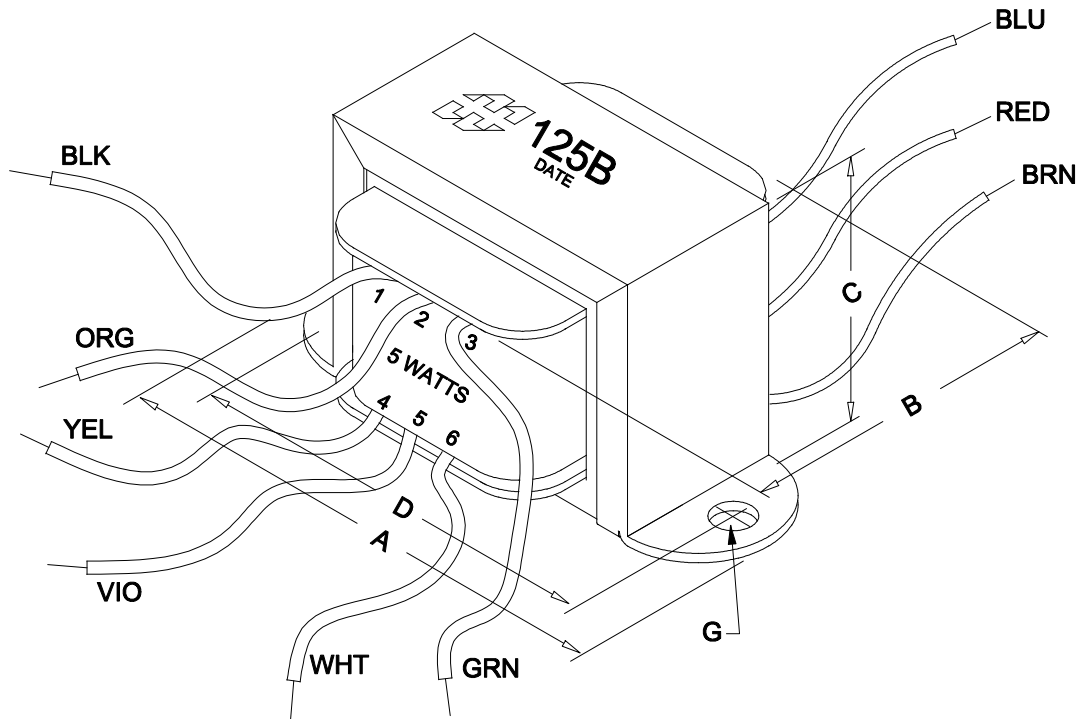
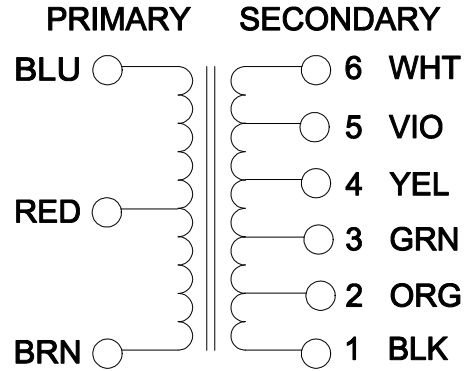
EDB125B

Voice Coil Impedance 1.5Ω 2Ω 3.2Ω 4Ω 6Ω 8Ω 12Ω 15Ω

Connect to Primary impedance , Total winding , Blue to Brown , (Red= CT)

Connect to	1.5Ω	2Ω	3.2Ω	4Ω	6Ω	8Ω	12Ω	15Ω
1-2	27000							
2-3	18000	24000						
3-4	16500	22000						
4-5	10000	13500	21600	27000				
5-6	8500	11000	18000	22000				
1-3	5400	7200	11500	15000	21600			
2-4	4200	5600	9000	11200	16800	22500		
3-5	3300	4400	7000	8800	13200	17600	26400	
4-6	2400	3200	5100	6400	9600	12800	19200	24000
1-4	2150	2900	4600	5800	8700	11600	17400	21500
2-5	1550	2050	3300	4100	6150	8200	12300	15500
3-6	1300	1700	2700	3400	5100	6800	10200	12800
1-5		1400	2200	2800	4200	5600	8400	10200
2-6			1700	2100	3150	4200	6300	8000
1-6			1200	1500	2300	3000	4500	5600

**125 SERIES
CONNECTION CHART**



A [±0.063]	B [±0.125]	C [±0.063]	D [±0.063]	G [±0.015]
2.38"	1.38"	1.38"	2.00"	0.187



52 RANKIN PLACE,
WATERLOO, ONTARIO, N2L 3Z5.
PHONE (519) 886-6181
FAX # (519) 886-9540

TITLE **125B**

NO	DATE	REVISION	DIM IN(X)MM()
0	08/07/09		

DR BY
B.PERVAIZ

DATE
08/07/09

EDB125B