



Chipsmall Limited consists of a professional team with an average of over 10 year of expertise in the distribution of electronic components. Based in Hongkong, we have already established firm and mutual-benefit business relationships with customers from,Europe,America and south Asia,supplying obsolete and hard-to-find components to meet their specific needs.

With the principle of “Quality Parts,Customers Priority,Honest Operation,and Considerate Service”,our business mainly focus on the distribution of electronic components. Line cards we deal with include Microchip,ALPS,ROHM,Xilinx,Pulse,ON,Everlight and Freescale. Main products comprise IC,Modules,Potentiometer,IC Socket,Relay,Connector.Our parts cover such applications as commercial,industrial, and automotives areas.

We are looking forward to setting up business relationship with you and hope to provide you with the best service and solution. Let us make a better world for our industry!



Contact us

Tel: +86-755-8981 8866 Fax: +86-755-8427 6832

Email & Skype: info@chipsmall.com Web: www.chipsmall.com

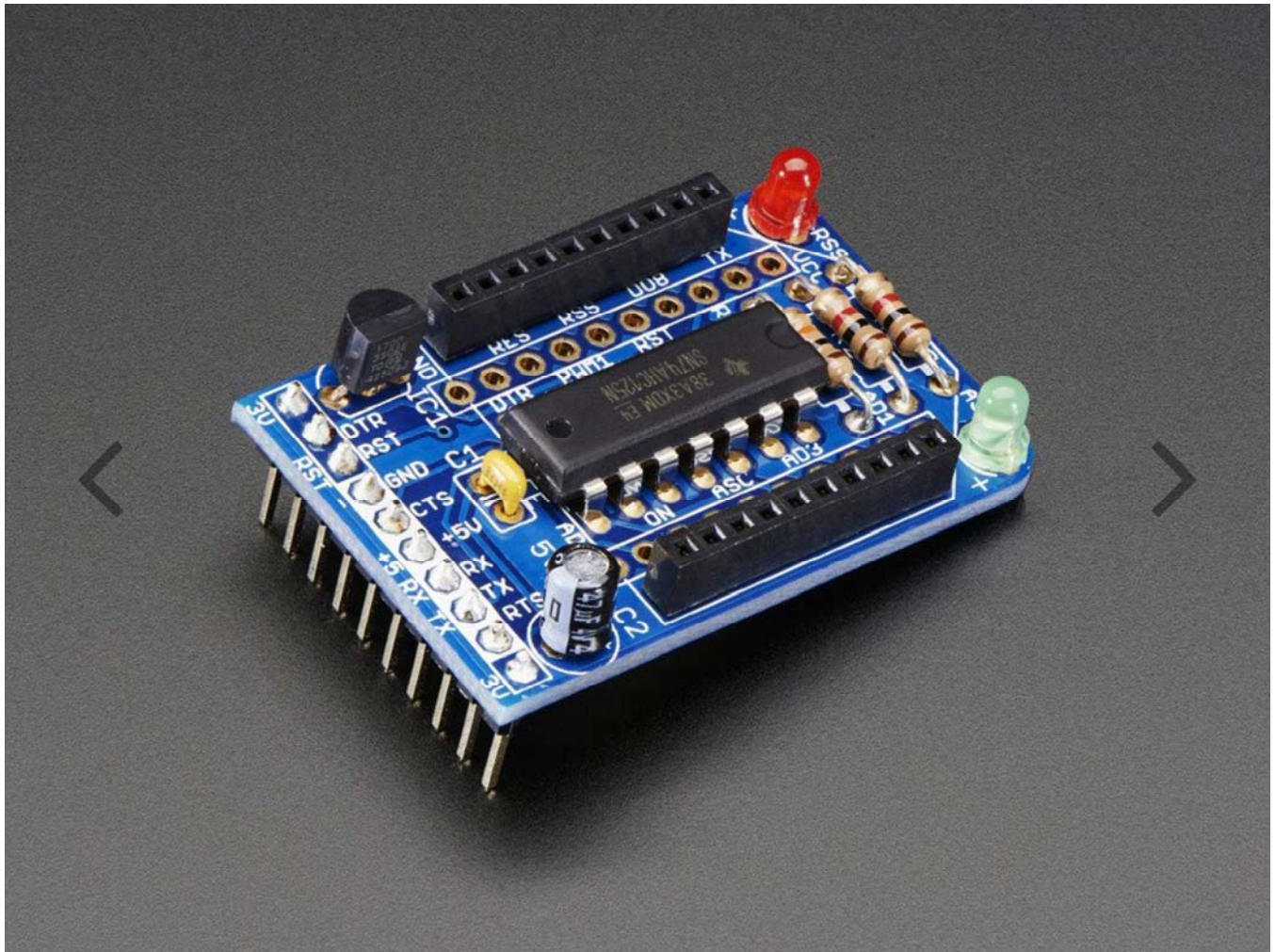
Address: A1208, Overseas Decoration Building, #122 Zhenhua RD., Futian, Shenzhen, China



WIRELESS / XBEE

XBee Adapter kit – v1.1

PRODUCT ID: 126



DESCRIPTION

This adapter board is designed to make adding wireless point-to-point or mesh networking easy. I looked at all the XBee adapter boards available and decided to design something better:

- Onboard 3.3V regulator to cleanly power your XBee, up to 250mA
- Level shifting circuitry means that its trivial to connect it to 5V circuitry such as an Arduino without risk of damage
- Two LEDs, one for activity (RSSI), the other for power (Associate)
- 10-pin 2mm sockets included to protect the modem and allow easy swapping, upgrading or recycling
- All the commonly used pins are brought out along the edge, making it easy to breadboard or wire up
- Specifically created for use with an FTDI cable to connect to a computer via USB. This means that you can use or upgrade the adapter with a computer simply by plugging in a cable
- **Works with XBee series 1 and 2 as well as Series 1&2 Pro modules**

The kit includes a PCB and all components necessary to build the adapter, unassembled. Tools are not included. This kit is really easy and will only take 15 minutes to build, even if you've never soldered before.

Please note that the adapter does not include an XBee module, they must be purchased separately. Check out this page for a comparison of all the XBee's available. If you want to connect this up to a computer's USB port you'll need a FTDI cable or FTDI friend (also not included)

For more information, check out the project page for instructions, documentation, tutorials and example code!