



Chipsmall Limited consists of a professional team with an average of over 10 year of expertise in the distribution of electronic components. Based in Hongkong, we have already established firm and mutual-benefit business relationships with customers from,Europe,America and south Asia,supplying obsolete and hard-to-find components to meet their specific needs.

With the principle of “Quality Parts,Customers Priority,Honest Operation,and Considerate Service”,our business mainly focus on the distribution of electronic components. Line cards we deal with include Microchip,ALPS,ROHM,Xilinx,Pulse,ON,Everlight and Freescale. Main products comprise IC,Modules,Potentiometer,IC Socket,Relay,Connector.Our parts cover such applications as commercial,industrial, and automotives areas.

We are looking forward to setting up business relationship with you and hope to provide you with the best service and solution. Let us make a better world for our industry!



Contact us

Tel: +86-755-8981 8866 Fax: +86-755-8427 6832

Email & Skype: info@chipsmall.com Web: www.chipsmall.com

Address: A1208, Overseas Decoration Building, #122 Zhenhua RD., Futian, Shenzhen, China



4

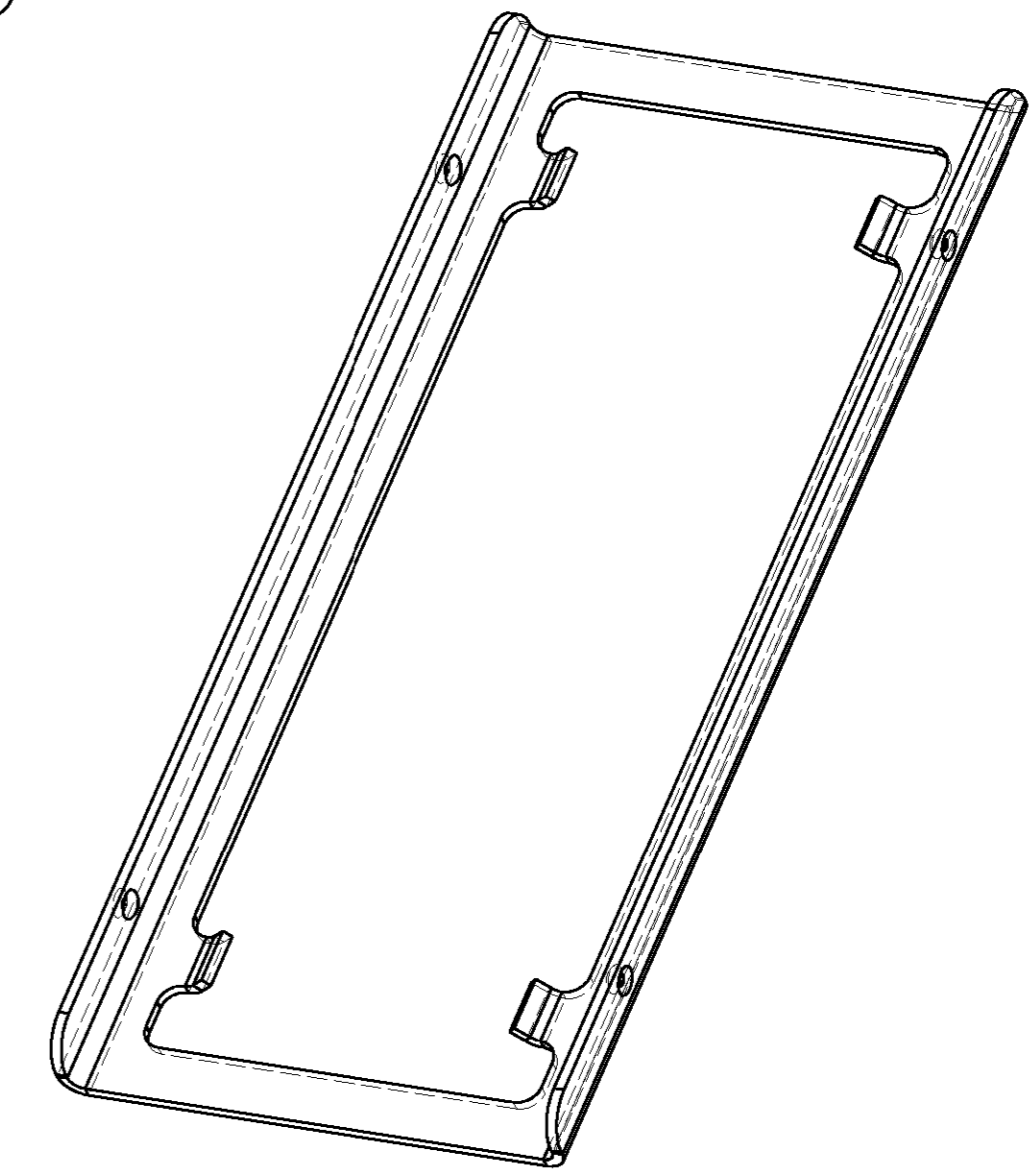
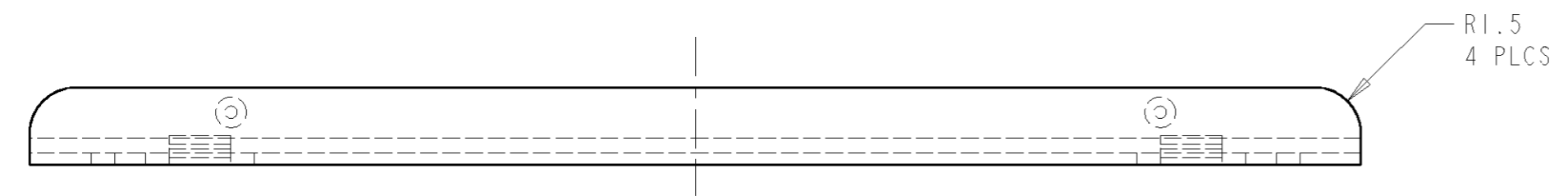
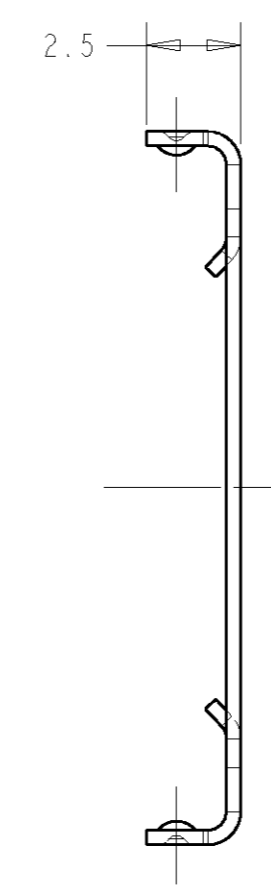
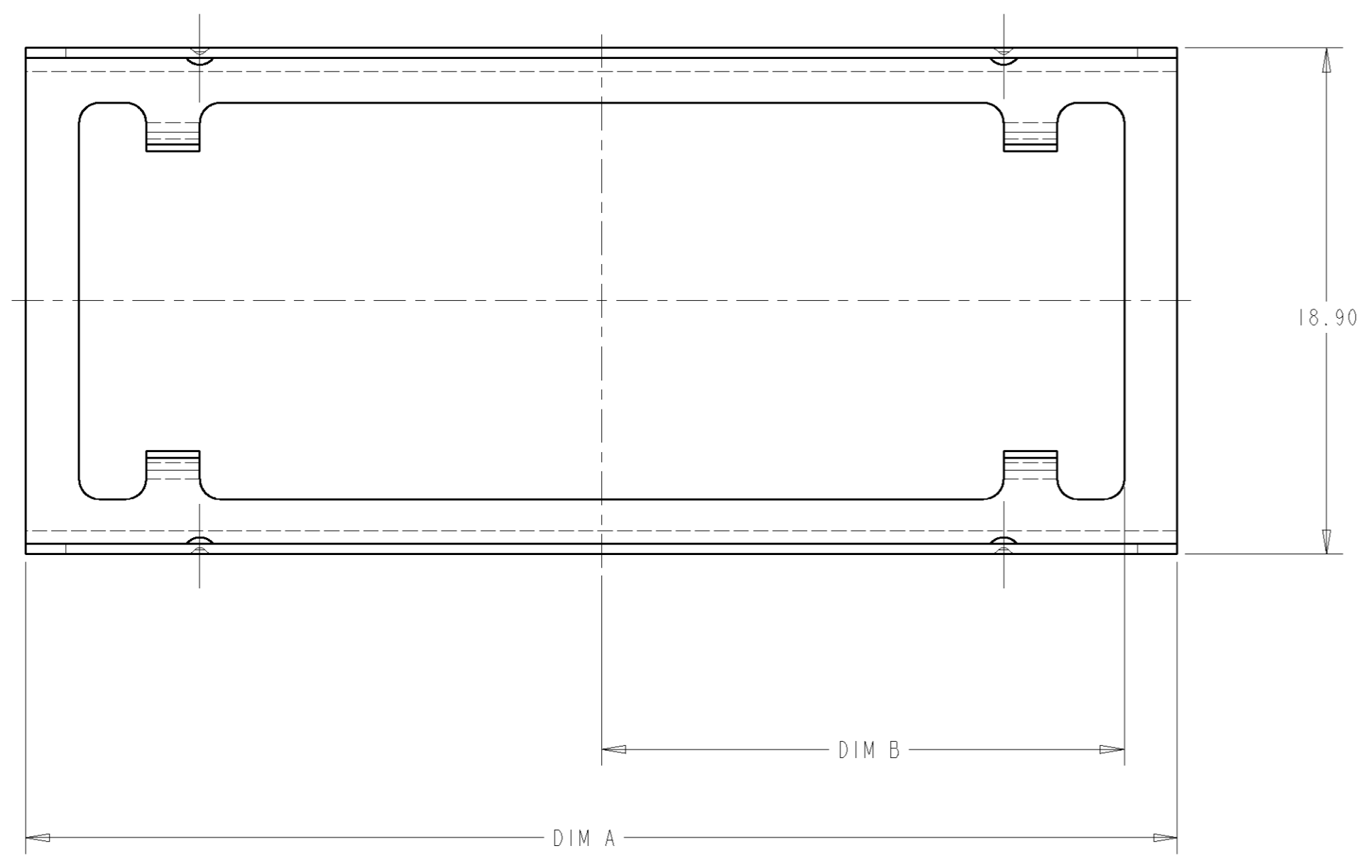
3

2

1

THIS DRAWING IS UNPUBLISHED. RELEASED FOR PUBLICATION
 © COPYRIGHT 19 BY AMP INCORPORATED. ALL RIGHTS RESERVED.

LOC	DIST	REVISIONS					
		P	LTR	DESCRIPTION	DATE	DWN	APVD
CE	16		O	REL PER NPR 99-065	21JUN99	EH	LB
			A	REVISED PER EC 0A00-0890-99	26OCT99	EH	LB
			B	REV PER EC 0A00-0901-99	12JAN00	EH	LB



SCALE 4:1

- 1. MATERIAL: 302 STAINLESS STEEL.
- 2. PACKAGED 50 PC PER BAG.

10.00	24.00±0.10	1X2 DUPLEX	1278530-2
19.50	43.00±0.10	1X4 QUAD	1278530-1
DIM B	DIM A	CONN CONF	PART NUMBER

<small>THIS DRAWING IS A CONTROLLED DOCUMENT FOR AMP INCORPORATED. IT IS SUBJECT TO CHANGE AND THE CONTROLLING ENGINEERING ORGANIZATION SHOULD BE CONTACTED FOR THE LATEST REVISION.</small>		DWN E Haley 21JUN99 CHK L BARKUS 21JUN99 APVD L BARKUS 21JUN99	AMP AMP Incorporated Harrisburg, PA 17105-3608
DIMENSIONS: mm	TOLERANCES UNLESS OTHERWISE SPECIFIED: 0 PLC ± 1 PLC ±0.3 2 PLC ±0.12 3 PLC ±0.050 4 PLC ±0.0001 ANGLES ± FINISH -	PRODUCT SPEC - APPLICATION SPEC - WEIGHT -	NAME RETAINING CLIP, BACKPLANE CONNECTOR, QUAD/DUPLEX VERTICAL, LIGHTRAY MPX SIZE A2 CAGE CODE 00779 DRAWING NO. 1278530 RESTRICTED TO - SCALE 2:1 SHEET 1 OF 1 REV B
MATERIAL -		CUSTOMER DRAWING	