



Chipsmall Limited consists of a professional team with an average of over 10 year of expertise in the distribution of electronic components. Based in Hongkong, we have already established firm and mutual-benefit business relationships with customers from,Europe,America and south Asia,supplying obsolete and hard-to-find components to meet their specific needs.

With the principle of "Quality Parts,Customers Priority,Honest Operation,and Considerate Service",our business mainly focus on the distribution of electronic components. Line cards we deal with include Microchip,ALPS,ROHM,Xilinx,Pulse,ON,Everlight and Freescale. Main products comprise IC,Modules,Potentiometer,IC Socket,Relay,Connector.Our parts cover such applications as commercial,industrial, and automotives areas.

We are looking forward to setting up business relationship with you and hope to provide you with the best service and solution. Let us make a better world for our industry!



Contact us

Tel: +86-755-8981 8866 Fax: +86-755-8427 6832

Email & Skype: info@chipsmall.com Web: www.chipsmall.com

Address: A1208, Overseas Decoration Building, #122 Zhenhua RD., Futian, Shenzhen, China



MT-RJ Connectors (Continued) / CORELINK Splice

MT-RJ Termination Tool Kits

Description	Part Number
MT-RJ Plug Termination Kit Tool Kit for termination of the MT-RJ Plug in handy plastic case. Contents are as follows: Cleave Pen, Jacket/Buffer/Coating Stripper, KEVLAR Shears, Strip Template, Cable Clamps, Cure Fixtures, Crimp Tool, Die Sets, Epoxy Dispensers	1278745-1
MT-RJ Jack Termination Kit Tool Kit for termination of the MT-RJ Jacks in handy soft case. Contents are as follows: Cleave Tool, Buffer/Coating Strip Tool, Micro Stripper, Kevlar Shears, MT-RJ Jack Strip Length Template, Actuator Key, Alcohol Wipes	1278346-1
Universal Termination Kit Tool Kit for termination of LIGHTCRIMP, LIGHTCRIMP Plus, and MT-RJ Jacks	1278949-2
Combination LIGHTCRIMP PLUS ST, SC, LC, & MT-RJ Jack Termination Kit - includes crimp tool, ST/SC/LC die sets, stripper tools, kevlar shears, ST and SC cable holder and cleave tool	1278118-4



KEVLAR is a trademark of E. I. Dupont de Nemours and Company.

CORELINK Splice

Product Facts

- Permanent, easy-to-use fiber splice
- Reusable
- High performance for singlemode and multimode
- Designed to TIA/EIA 568-b.3
- Clamping mechanism prevents torsional failure
- Accommodates both 250 µm and 900 µm buffers

Tyco Electronics' CORELINK Splice is an easy-to-use, high-performance mechanical splice for 125 µm singlemode and multimode fibers. It's unique clamping mechanism is activated with a simple key; no other tooling is required. The transparent material allows the crafts person to both see and feel the fiber position. The CORELINK Splice is re-mateable — either fiber can be removed and replaced in the splice at any time.

Applications

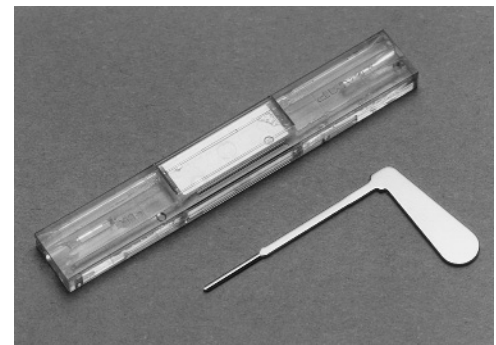
- Outside Plant
- Fiber-in-the-Loop
- Fiber-to-Jumper Splicing
- Premises Networks
- Testing
- Emergency Restoration

CORELINK Splices can be housed in a variety of splice trays for placement in closures, ONUs, and fiber enclosures.

Instruction Sheet 408-4019

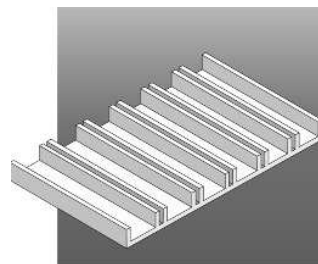
Performance Characteristics

Mean Splice Loss — <0.3 dB
Mean Return Loss — -26 dB
Temperature Range — -0° to 60° C



Description	Part Number
CORELINK splices — 12 pack — Includes 2 keys (singlemode)	503577-1
CORELINK splices — 12 pack — Includes 2 keys (multimode)	503901-1
2 Replacement keys in key holder	503681-1
Holder for up to 6 CORELINK splices — Mount on splice trays or in distribution boxes	559066-1
Splice Tray — Holds up to 12 CORELINK splices — for use in Tyco Electronics' closures and distribution boxes	559067-1

1.5" x 2.4" elastomer holder for 6 CORELINK splices. Mount on splice trays or in distribution boxes.

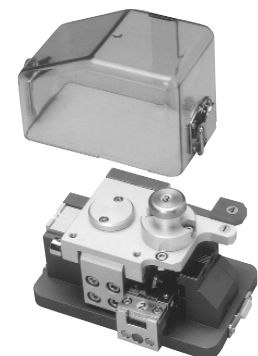


CORELINK Splice Workstation
Part Number 503605-1

Instruction Sheet 408-4131



Splice Tray—holds 12 splices
Part Number 559067-1



Universal Fiber Optic Cleaving Tool
Part Number 503924-1