



Chipsmall Limited consists of a professional team with an average of over 10 year of expertise in the distribution of electronic components. Based in Hongkong, we have already established firm and mutual-benefit business relationships with customers from,Europe,America and south Asia,supplying obsolete and hard-to-find components to meet their specific needs.

With the principle of “Quality Parts,Customers Priority,Honest Operation,and Considerate Service”,our business mainly focus on the distribution of electronic components. Line cards we deal with include Microchip,ALPS,ROHM,Xilinx,Pulse,ON,Everlight and Freescale. Main products comprise IC,Modules,Potentiometer,IC Socket,Relay,Connector.Our parts cover such applications as commercial,industrial, and automotives areas.

We are looking forward to setting up business relationship with you and hope to provide you with the best service and solution. Let us make a better world for our industry!



Contact us

Tel: +86-755-8981 8866 Fax: +86-755-8427 6832

Email & Skype: info@chipsmall.com Web: www.chipsmall.com

Address: A1208, Overseas Decoration Building, #122 Zhenhua RD., Futian, Shenzhen, China



THIS DRAWING IS UNPUBLISHED.

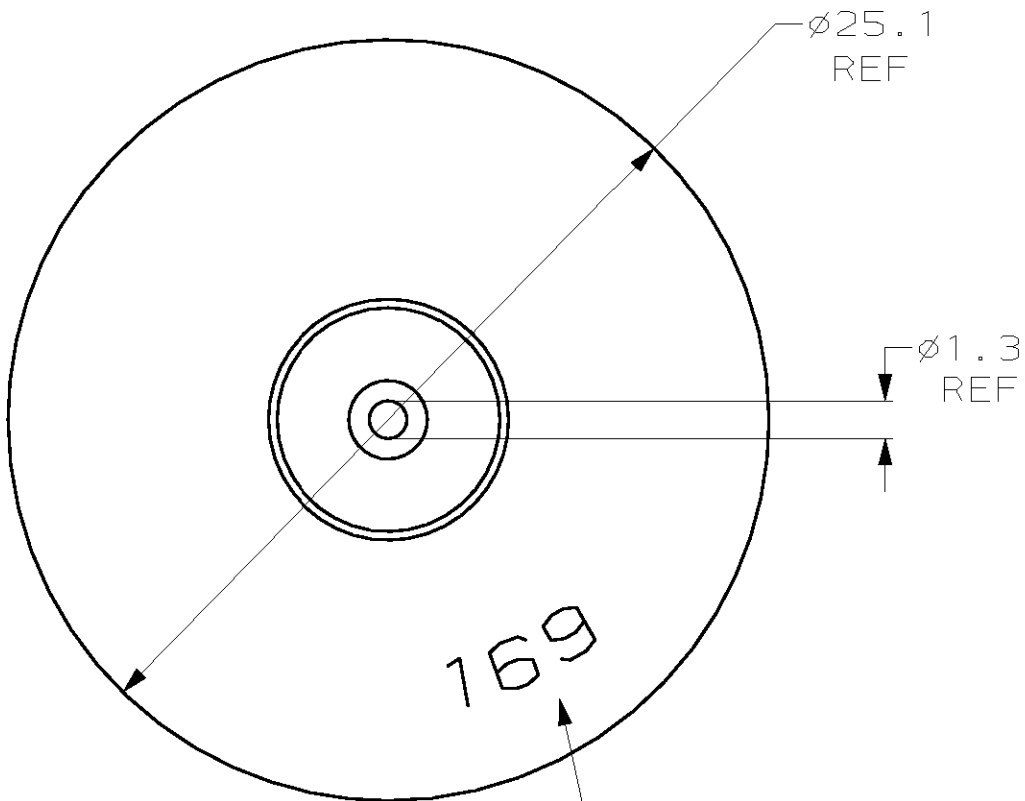
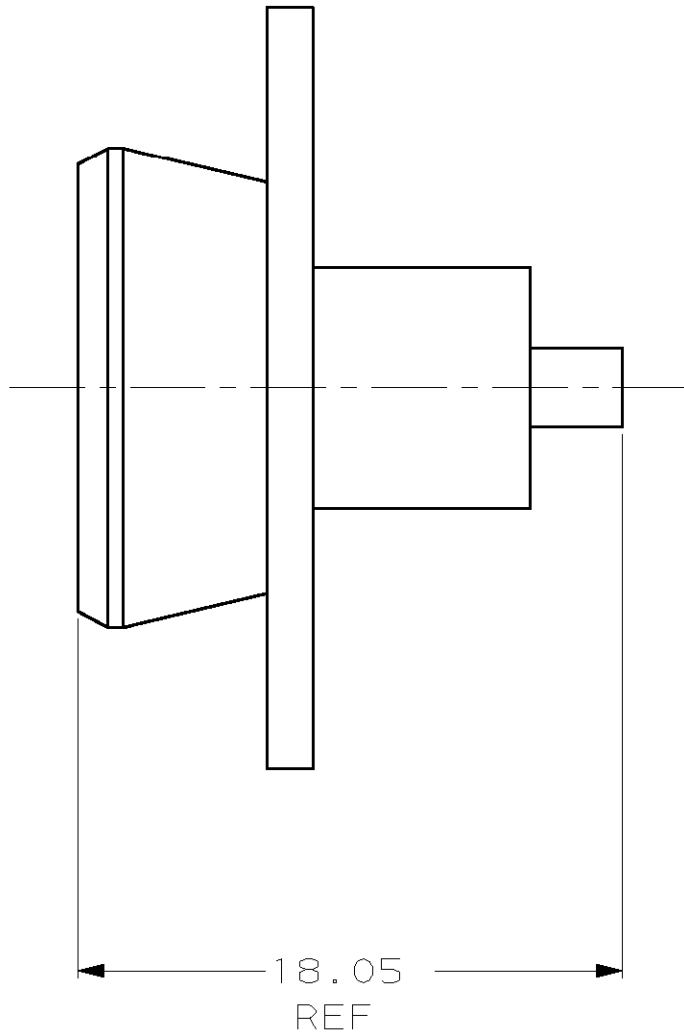
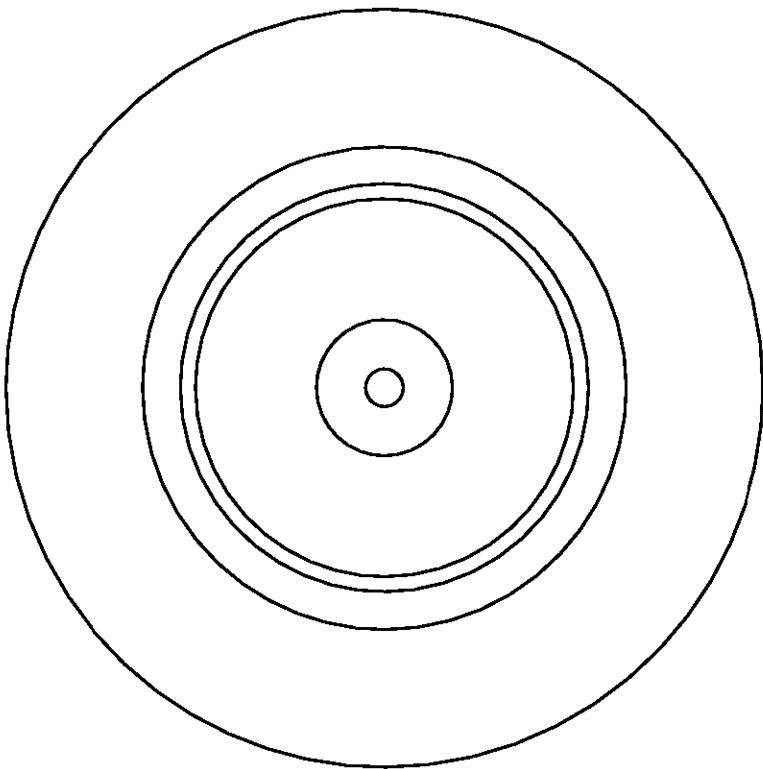
RELEASED FOR PUBLICATION

.19

© COPYRIGHT 19

BY AMP INCORPORATED. ALL RIGHTS RESERVED.

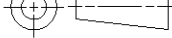
LOC	DIST	REVISIONS					
CE	16	P	LTR	DESCRIPTION	DATE	DWN	APVD
			0	RELEASED PER NPR 99-473	22SEP99	TG	SB



MARKED WITH STAMP "169"

1278997-1

PART NUMBER

THIS DRAWING IS A CONTROLLED DOCUMENT.		DWN T.GREEN 22SEP99	<div><div>AMP</div><div>AMP Incorporated</div><div>Harrisburg, PA 17105-3608</div></div>	
		CHK M.GURRERI 22SEP99		
		APVD S.BUCHTER 22SEP99		
		NAME		
DIMENSIONS: mm		TOLERANCES UNLESS OTHERWISE SPECIFIED:		PRODUCT SPEC —
				APPLICATION SPEC —
				SIZE A2
				CAGE CODE 00779
				DRAWING NO C=1278997
MATERIAL —		FINISH —		RESTRICTED TO —
		WEIGHT —		
		CUSTOMER DRAWING		SCALE 4:1
				SHEET 1 OF 1
				REV 0