



Chipsmall Limited consists of a professional team with an average of over 10 year of expertise in the distribution of electronic components. Based in Hongkong, we have already established firm and mutual-benefit business relationships with customers from,Europe,America and south Asia,supplying obsolete and hard-to-find components to meet their specific needs.

With the principle of “Quality Parts,Customers Priority,Honest Operation,and Considerate Service”,our business mainly focus on the distribution of electronic components. Line cards we deal with include Microchip,ALPS,ROHM,Xilinx,Pulse,ON,Everlight and Freescale. Main products comprise IC,Modules,Potentiometer,IC Socket,Relay,Connector.Our parts cover such applications as commercial,industrial, and automotives areas.

We are looking forward to setting up business relationship with you and hope to provide you with the best service and solution. Let us make a better world for our industry!



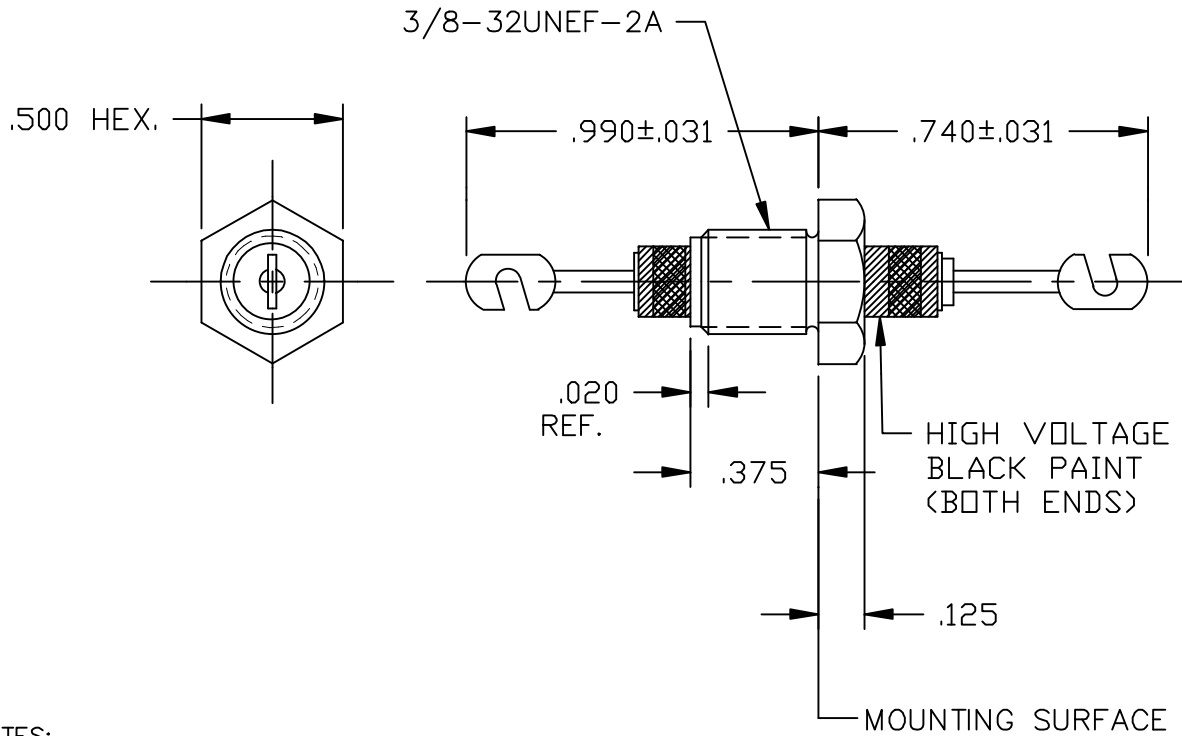
## Contact us

Tel: +86-755-8981 8866 Fax: +86-755-8427 6832

Email & Skype: info@chipsmall.com Web: www.chipsmall.com

Address: A1208, Overseas Decoration Building, #122 Zhenhua RD., Futian, Shenzhen, China

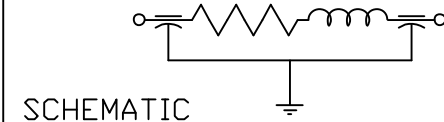




NOTES:

1. SUGGESTED MOUNTING HOLE =  $\phi$ .386
2. HARDWARE IS INCLUDED.
3. THIS IS A LEAD FREE PART.
4. MAX REFLOW IS 245°C FOR 5 SECONDS.

TERMINAL FINISH: TIN/SILVER	
BUSHING FINISH: SILVER	
CAPACITANCE	1500pF MIN
TEMP. RANGE	-55°C TO 125°C
CURRENT	25 AMP MAX.
WORKING VOLTAGE	85°C ---VDC MAX. 125°C: 2500VDC MAX.
D.C. RESISTANCE	.01ohms MAX.
MIN. I.L. PER MIL-STD-220 AT 25°C NO LOAD	
FREQ. MHz	I.L. (db)
1	--
10	5
100	50
1 GHz	50
10 GHz	50



MARKING:

PART: SCI S1280F060  
 PACKAGE: (TRAY)Ⓢ  
 SCI  
 1280F-060  
 DATE CODE  
 LOT NO.  
 QTY./PACK

NOTE: SILVER PAPER TO COVER ALL UNITS.



			01	00	REV. NO.	TOLERANCES UNLESS OTHERWISE SPECIFIED		FAIRVIEW PENNSYLVANIA	
			ECN 21851	CN 26501-CPD	CHANGE NOTICE	Fractions $\pm$ 1/64		Dwn. KAUFFMAN	Description
						Dec. .xx $\pm$	Date	HIGH VOLTAGE FILTER	
						Dec. .xxx $\pm$ .010	3/21/06		
						Angles $\pm$ 0° 30'	Engr. Salorino		
						CODE IDENT. NO. 0LSP2	Scale NONE	1280F-060	