



Chipsmall Limited consists of a professional team with an average of over 10 year of expertise in the distribution of electronic components. Based in Hongkong, we have already established firm and mutual-benefit business relationships with customers from,Europe,America and south Asia,supplying obsolete and hard-to-find components to meet their specific needs.

With the principle of “Quality Parts,Customers Priority,Honest Operation,and Considerate Service”,our business mainly focus on the distribution of electronic components. Line cards we deal with include Microchip,ALPS,ROHM,Xilinx,Pulse,ON,Everlight and Freescale. Main products comprise IC,Modules,Potentiometer,IC Socket,Relay,Connector.Our parts cover such applications as commercial,industrial, and automotives areas.

We are looking forward to setting up business relationship with you and hope to provide you with the best service and solution. Let us make a better world for our industry!



Contact us

Tel: +86-755-8981 8866 Fax: +86-755-8427 6832

Email & Skype: info@chipsmall.com Web: www.chipsmall.com

Address: A1208, Overseas Decoration Building, #122 Zhenhua RD., Futian, Shenzhen, China



CAD GENERATED DRAWING	DCN CONTROLLED DOCUMENT	DWG. NO. 1285-6002
-----------------------------	-------------------------------	---------------------------

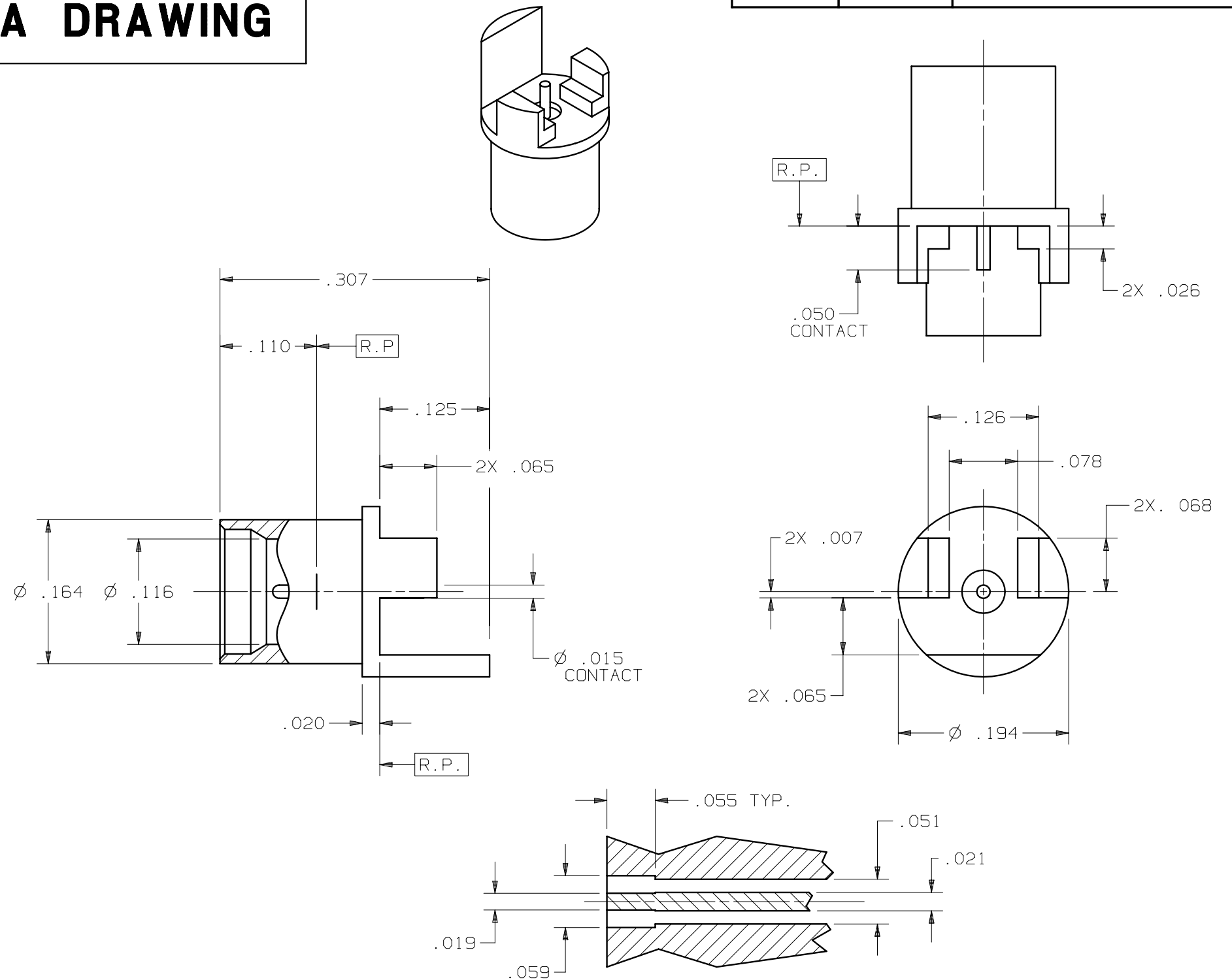
BODY:	STAINLESS STEEL PER AMS-5640
CONTACT:	BERYLLIUM COPPER PER ASTM B196
INSULATOR:	TEFLON PER ASTM D1710

BODY &
CONTACT: GOLD PER ASTM B488 OVER NICKEL
PER AMS-QQ-N-290

IMPEDANCE: 50 OHMS
FREQ. RANGE: DC-18.0 GHz
R.F. INSERTION LOSS: 0.1dB MAX TO 18.0 GHz
VSWR: 1.15:1 MAX. TO 18.0 GHz

SMP MALE INTERFACE DIMENSIONS PER MIL-STD-348

1. FOR RECOMMENDED FOOTPRINT TO YOUR SPECIFIC PCB, CONTACT SV MICROWAVE SALES DEPARTMENT (sales@svmicro.com, 561-840-1800).



RECOMMENDED PCB MOUNT

SYM.	DESCRIPTION	DATE	APPR.	UNLESS OTHERWISE SPECIFIED: 1)ALL DIMENSIONS ARE AFTER PLATING. 2)BREAK CORNERS & EDGES .005 R.MAX. 3)CHAM. 1st & LAST THDS. 4)SURFACE ROUGHNESS 63 J MIL-STD-10. 5)DIAS. ON COMMON CENTERS TO BE CONCENTRIC WITHIN .005 T.I.R. 6)REMOVE ALL BURRS.	DIMENSIONS ARE IN INCHES TOLERANCES:			SV Microwave, Inc. 2400 Centrepark West Drive, Suite 100 West Palm Beach, FL 33409	
-	REL.DCN 31992	08/04	BRT		DECIMALS .X N/A .XX N/A .XXX N/A	FRACTIONAL ±1/64	ANGULAR X° ±10' X°X' ±15'		TITLE: SMP MALE STRAIGHT PCB EDGE MOUNT (FULL DETENT)
					MATERIAL: SEE ABOVE		□" AREA: N/A		
					FINISH: SEE ABOVE				
					DRAWN: BRT 08/24/04	SIZE B	CAGE NO. 95077	SCALE 7X	DWG.NO. 1285-6002
					CHECKED: BRT 08/24/04				
				APPROVED: BRT 08/24/04					