



Chipsmall Limited consists of a professional team with an average of over 10 year of expertise in the distribution of electronic components. Based in Hongkong, we have already established firm and mutual-benefit business relationships with customers from,Europe,America and south Asia,supplying obsolete and hard-to-find components to meet their specific needs.

With the principle of “Quality Parts,Customers Priority,Honest Operation,and Considerate Service”,our business mainly focus on the distribution of electronic components. Line cards we deal with include Microchip,ALPS,ROHM,Xilinx,Pulse,ON,Everlight and Freescale. Main products comprise IC,Modules,Potentiometer,IC Socket,Relay,Connector.Our parts cover such applications as commercial,industrial, and automotives areas.

We are looking forward to setting up business relationship with you and hope to provide you with the best service and solution. Let us make a better world for our industry!



Contact us

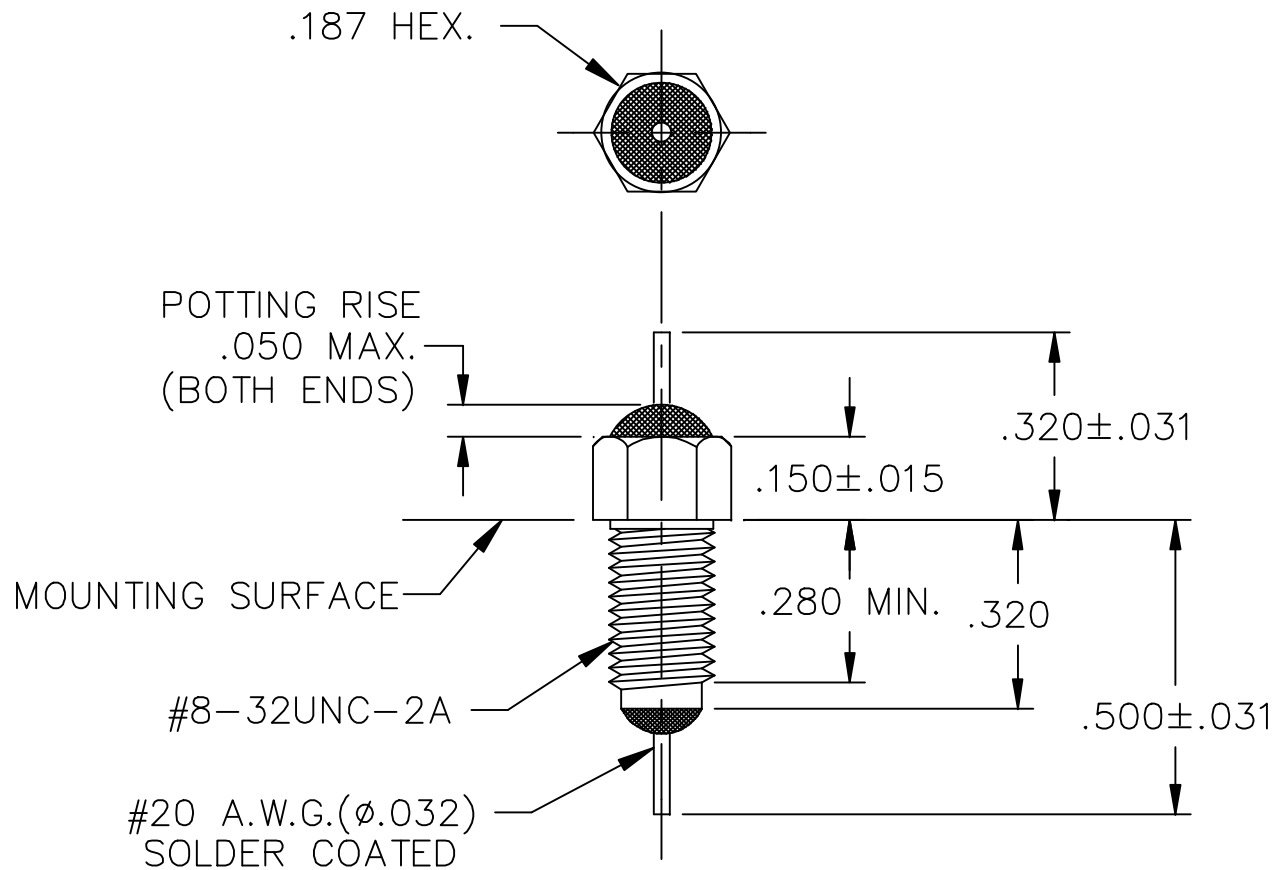
Tel: +86-755-8981 8866 Fax: +86-755-8427 6832

Email & Skype: info@chipsmall.com Web: www.chipsmall.com

Address: A1208, Overseas Decoration Building, #122 Zhenhua RD., Futian, Shenzhen, China



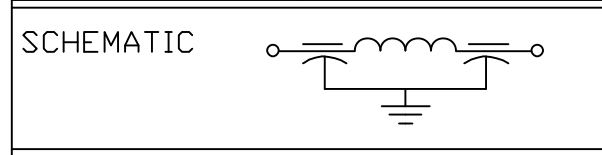
13



NOTE:
SUGGESTED MTG. HOLE ϕ .180
HARDWARE IS INCLUDED

CAPACITANCE	.028 μ F - .120 μ F
TEMP. RANGE	-55°C TO 125°C
CURRENT	10 AMP MAX.
WORKING VOLTAGE	85°C 100 VDC 125°C 70 VDC
DC RESISTANCE	.01ohms MAX.
IL=PER MIL-STD-220, @25°C N/L	

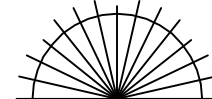
MIN. NO LOAD	
FREQ. MHz	I.L. (db)
1	10
3	14
10	38
30	65
--	--
100	75
300	75
1 GHz	75



MARKING:

PART: S001 (FAIRVIEW)
S001(M) (MEXICO)

BAG: SCI-1293-001
DATE CODE
QTY/BAG (200 MAX.)

	13	12	11	10	9	8	7	6	5	4	REV. NO.	TOLERANCES UNLESS OTHERWISE SPECIFIED	 SPECTRUM CONTROL INC.	FAIRVIEW PENNSYLVANIA	
	CN 51849-ENG	CN 29708-CPD	CN 10869-CPD	CN 207992	CN 207674	CN 207260	CN 201766	CN 189900	CN 181176	CN 176583 REDRAWN	CHANGE NOTICE	Fractions \pm 1/64		Dwn. KEVERLINE	Description
												Dec. .xx \pm	Date 11-23-09	Pi, RESIN SEAL FILTER	
												Dec. .xxx \pm .010	Engr. B.DEVINE	1293-001	
												Angles \pm 0° 30'	Scale NONE		
												CODE IDENT. NO. DLSP2			