



Chipsmall Limited consists of a professional team with an average of over 10 year of expertise in the distribution of electronic components. Based in Hongkong, we have already established firm and mutual-benefit business relationships with customers from,Europe,America and south Asia,supplying obsolete and hard-to-find components to meet their specific needs.

With the principle of “Quality Parts,Customers Priority,Honest Operation,and Considerate Service”,our business mainly focus on the distribution of electronic components. Line cards we deal with include Microchip,ALPS,ROHM,Xilinx,Pulse,ON,Everlight and Freescale. Main products comprise IC,Modules,Potentiometer,IC Socket,Relay,Connector.Our parts cover such applications as commercial,industrial, and automotives areas.

We are looking forward to setting up business relationship with you and hope to provide you with the best service and solution. Let us make a better world for our industry!



Contact us

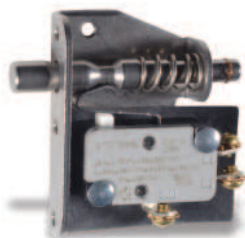
Tel: +86-755-8981 8866 Fax: +86-755-8427 6832

Email & Skype: info@chipsmall.com Web: www.chipsmall.com

Address: A1208, Overseas Decoration Building, #122 Zhenhua RD., Futian, Shenzhen, China



TL Series Door Interlock Switches



Features/Benefits

- ***Push/pull motion***
- ***Multiple mounting configurations***
- ***Wide variety of termination options***
- ***Ratings up to 15 AMPS***

Typical Applications

- **Computer enclosures**
- **Panel builders**
- **Industrial enclosures**

Specifications

CONTACT RATING: 15 AMPS @ 125 & 250 V AC; 0.25 AMP @ 250 V DC; 0.5 AMP @ 125 V DC; 1/2 HP @ 125 & 250 V AC; 3 AMPS @ 125 V AC "L".

ELECTRICAL LIFE: 150,000 cycles at 15 AMPS @ 250 V AC.

INSULATION RESISTANCE: 1.000 M ohm min.

DIELECTRIC STRENGTH: 1.000 Vrms min. @ sea level.

OPERATING TEMPERATURE: -67°F to 302°F (-55°C to 150°C).

NOTE: Specifications and materials listed above are for switches with standard options. For information on specific and custom switches, consult Customer Service Center.

Materials

SWITCH HOUSING: Thermoplastic or general purpose phenolic (UL 94V-0).

MOUNTING BRACKET: Stainless steel.

PLUNGER: Stainless steel.

ACTUATOR BUTTON: Thermoplastic (UL 94V-0).

SPRING: Copper alloy.

PIVOT: Brass alloy.

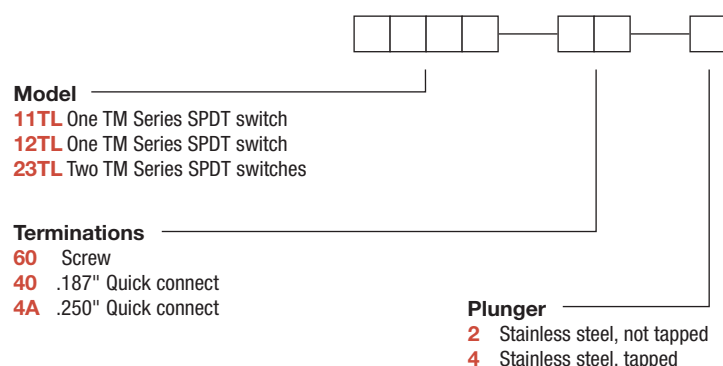
MOVABLE CONTACT: Fine silver.

STATIONARY CONTACTS: Fine silver.

TERMINALS: Copper alloy.

Build-A-Switch

To order, simply select desired option from each category and place in the appropriate box. Available options are shown and described on pages J-83 and J-84. For additional options not shown in catalog, consult Customer Service Center.



MODEL



Front View Dimensions:

- Total Height: 1.300 [33,02]
- Top Mounting Hole Diameter: .265 [6,73]
- Distance from Top Edge to Center of Mounting Hole: .25 [6,2]
- Distance from Bottom Edge to Center of Mounting Hole: .500 [12,7]
- Bottom Mounting Hole Diameter: .25 [6,2]
- Distance between Centers of Mounting Holes: .406 [10,31]
- Bottom Flange Thickness: .51 [13]

Side View Dimensions:

- Total Width: 1.87 [47,4]
- Distance from Front Face to Center of Plunger: .179 [4,55]
- Plunger Diameter: Ø.25 [6,4]
- Distance from Front Face to End of Plunger: .218 [5,54]
- Distance from Front Face to Start of Spring Housing: .84 [21,3]
- Spring Housing Length: .812 [20,62]
- Distance from Front Face to End of Spring Housing: 1.59 [40,4]
- End Thread: 6-32 NC THD. (4)
- End Flange Diameter: Ø.21 [5,3]


Other Labels:

- .375 MAX. FREE POS. [9,53]
- .203 MIN. OPER. POS. [5,16]
- .125 MAX DEPRESSED POS. [3,18]
- STAINLESS STEEL PLUNGER
- FLEXIBLE INSULATOR
- NC (Normally Closed) terminal label
- NO (Normally Open) terminal label
- COM (Common) terminal label



J

Snap-acting

[illegible]

Torque screws to
6in lbs max

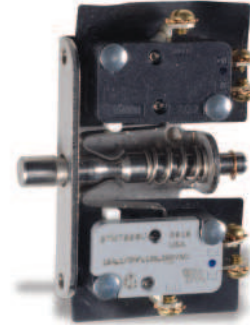
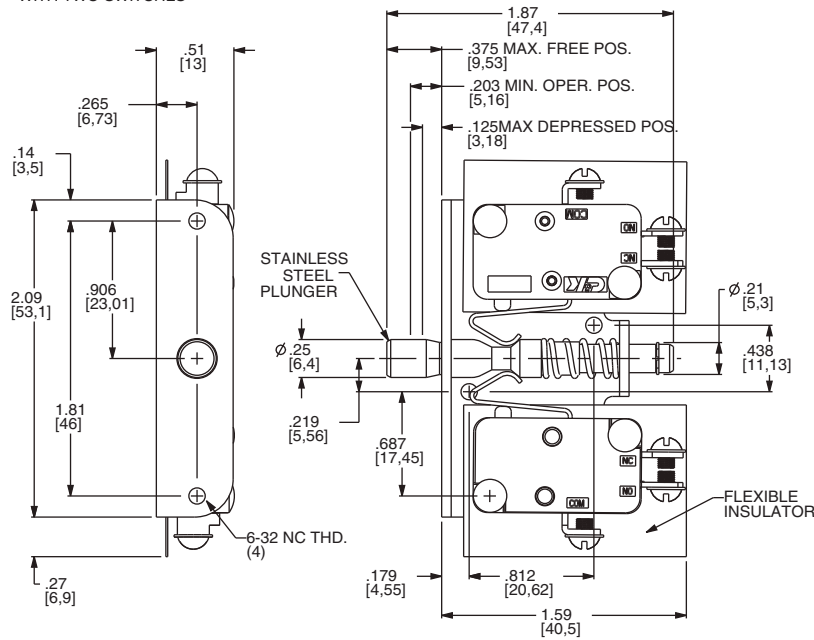


Third Angle Projection

Dimensions are shown: Inches (mm)
Specifications and dimensions subject to change

MODEL 

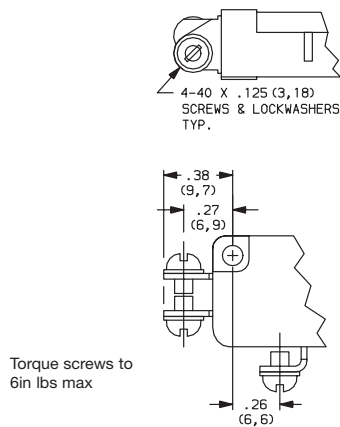
23TL WITH TWO SWITCHES



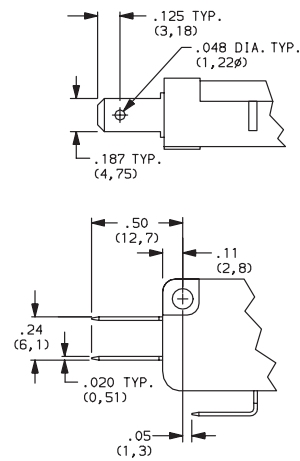
23TL602
SPDT

TERMINATIONS

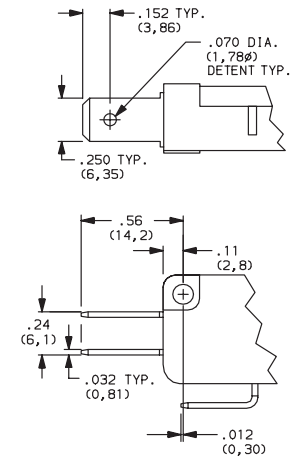
60 SCREW TERMINALS



40 .187" QUICK CONNECT



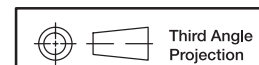
4A .250" QUICK CONNECT



PLUNGERS

2 STAINLESS STEEL, NOT TAPPED

4 STAINLESS STEEL, TAPPED 4-40 x .375 (9,52) min. depth



Dimensions are shown: Inches (mm)
Specifications and dimensions subject to change