



Chipsmall Limited consists of a professional team with an average of over 10 year of expertise in the distribution of electronic components. Based in Hongkong, we have already established firm and mutual-benefit business relationships with customers from,Europe,America and south Asia,supplying obsolete and hard-to-find components to meet their specific needs.

With the principle of “Quality Parts,Customers Priority,Honest Operation,and Considerate Service”,our business mainly focus on the distribution of electronic components. Line cards we deal with include Microchip,ALPS,ROHM,Xilinx,Pulse,ON,Everlight and Freescale. Main products comprise IC,Modules,Potentiometer,IC Socket,Relay,Connector.Our parts cover such applications as commercial,industrial, and automotives areas.

We are looking forward to setting up business relationship with you and hope to provide you with the best service and solution. Let us make a better world for our industry!



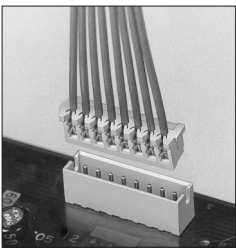
Contact us

Tel: +86-755-8981 8866 Fax: +86-755-8427 6832

Email & Skype: info@chipsmall.com Web: www.chipsmall.com

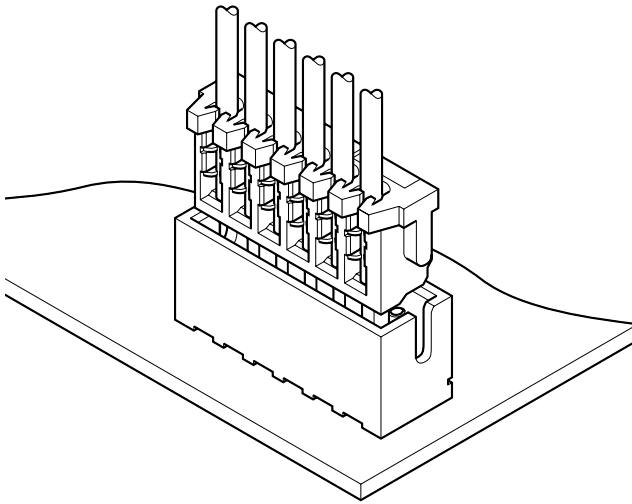
Address: A1208, Overseas Decoration Building, #122 Zhenhua RD., Futian, Shenzhen, China





ZR CONNECTOR

1.5mm pitch/Disconnectable Insulation displacement connectors



The twin U-slots (IDC slots), the 3-point insulation grip, and the distortion resistant disconnectable construction ensure a reliable connection even during severe environmental conditions.

- Compact
- Twin U-slot insulation displacement section
- 3-point grip construction
- Distortion resistant construction
- Compatible with the ZH crimp style connector

Specifications

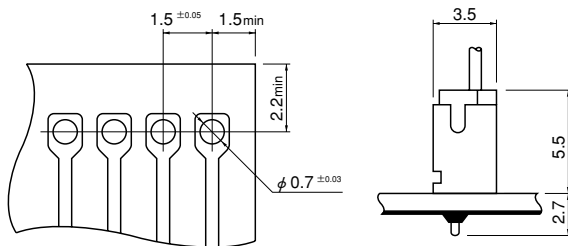
- Current rating: 0.7A AC, DC (AWG #28)
- Voltage rating: 50V AC, DC
- Temperature range: -25°C to +85°C
(including temperature rise in applying electrical current)
- Contact resistance: Initial value/20m Ω max.
After environmental testing/30m Ω max.
- Insulation resistance: 500M Ω min.
- Withstanding voltage: 500V AC/minute
- Applicable wire: UL1571(Contact JST for details regarding other UL styles.)
AWG #30, #28
Conductor/7 strands, tin-coated
Insulation O.D./0.7 to 0.8mm
(Contact JST for diameters greater than 0.8mm.)
- Applicable PC board thickness: 0.6 to 1.2mm, 1.6mm
- * Compliant with RoHS.
- * Refer to "General Instruction and Notice when using Terminals and Connectors" at the end of this catalog.
- * Contact JST for details.

Standards

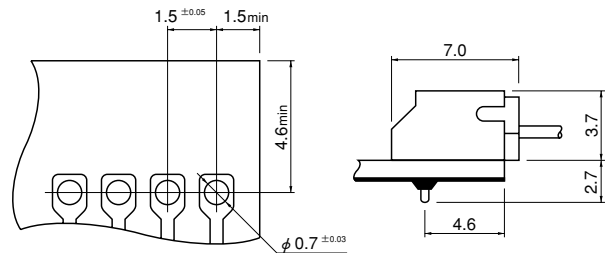
- Ⓜ Recognized E60389
- Ⓢ Certified LR20812

Through-hole type PC board layout (viewed from soldering side) and Assembly layout

Top entry type



Side entry type



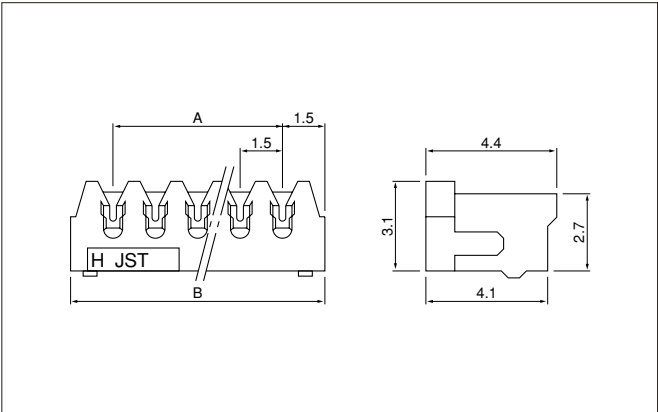
Note: 1. Tolerances are non-cumulative: ±0.05mm for all centers.

2. Hole dimensions differ according to the kind of PC board and piercing method. The dimensions above should serve as a guideline. Contact JST for details.

3. As for the PC board layout for the SMT type shrouded headers, refer to that of the ZH connector.

ZR CONNECTOR

Socket



| Circuits | Model No. | | Dimensions (mm) | | Q'ty / box |
|----------|-----------------------|------------------|-----------------|------|------------|
| | AWG #30(natural/gray) | AWG #28(green) | A | B | |
| 2 | 02ZR-3H-P | 02ZR-8M-P | 1.5 | 4.5 | 2,000 |
| 3 | 03ZR-3H-P | 03ZR-8M-P | 3.0 | 6.0 | 2,000 |
| 4 | 04ZR-3H-P | 04ZR-8M-P | 4.5 | 7.5 | 2,000 |
| 5 | 05ZR-3H-P | 05ZR-8M-P | 6.0 | 9.0 | 2,000 |
| 6 | 06ZR-3H-P | 06ZR-8M-P | 7.5 | 10.5 | 2,000 |
| 7 | 07ZR-3H-P | 07ZR-8M-P | 9.0 | 12.0 | 2,000 |
| 8 | 08ZR-3H-P | 08ZR-8M-P | 10.5 | 13.5 | 2,000 |
| 9 | 09ZR-3H-P | 09ZR-8M-P | 12.0 | 15.0 | 2,000 |
| 10 | 10ZR-3H-P | 10ZR-8M-P | 13.5 | 16.5 | 2,000 |
| 11 | 11ZR-3H-P | 11ZR-8M-P | 15.0 | 18.0 | 2,000 |
| 12 | 12ZR-3H-P | 12ZR-8M-P | 16.5 | 19.5 | 2,000 |
| 13 | 13ZR-3H-P | 13ZR-8M-P | 18.0 | 21.0 | 2,000 |

Material and Finish

Contact: Phosphor bronze, tin-plated (reflow treatment)
Housing: Glass-filled PA 66, UL94V-0

RoHS compliance

Note: Not TÜV approved.

<For reference> As the color identification, the following alphabet shall be put in the underlined part. For availability, delivery and minimum order quantity, contact JST.

ex. **02ZR-3H-P**
standard color AWG#30: H...gray
AWG#28: M...green
K...black R...red E...blue

Shrouded header

The shrouded headers are interchangeable with those of the ZH crimp style connectors.