



Chipsmall Limited consists of a professional team with an average of over 10 year of expertise in the distribution of electronic components. Based in Hongkong, we have already established firm and mutual-benefit business relationships with customers from,Europe,America and south Asia,supplying obsolete and hard-to-find components to meet their specific needs.

With the principle of “Quality Parts,Customers Priority,Honest Operation,and Considerate Service”,our business mainly focus on the distribution of electronic components. Line cards we deal with include Microchip,ALPS,ROHM,Xilinx,Pulse,ON,Everlight and Freescale. Main products comprise IC,Modules,Potentiometer,IC Socket,Relay,Connector.Our parts cover such applications as commercial,industrial, and automotives areas.

We are looking forward to setting up business relationship with you and hope to provide you with the best service and solution. Let us make a better world for our industry!



Contact us

Tel: +86-755-8981 8866 Fax: +86-755-8427 6832

Email & Skype: info@chipsmall.com Web: www.chipsmall.com

Address: A1208, Overseas Decoration Building, #122 Zhenhua RD., Futian, Shenzhen, China

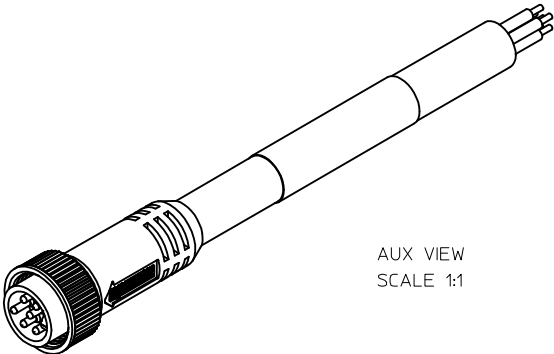
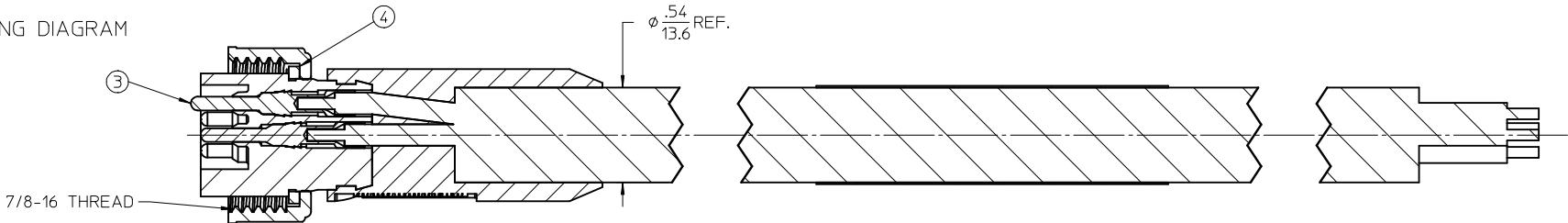


PART NUMBER	ENGINEERING NO.	LENGTH
1300061672	106002A01F030	3' +1.75 - 0 [0.9M +44.5 - 0]
1300061675	106002A01F060	6' +2.19 - 0 [1.8M +55.6 - 0]
1300061679	106002A01F120	12' +3.50 - 0 [3.7M +88.9 - 0]
1300061686	106002A01F200	20' +6.50 - 0 [6.1M +165.1 - 0]

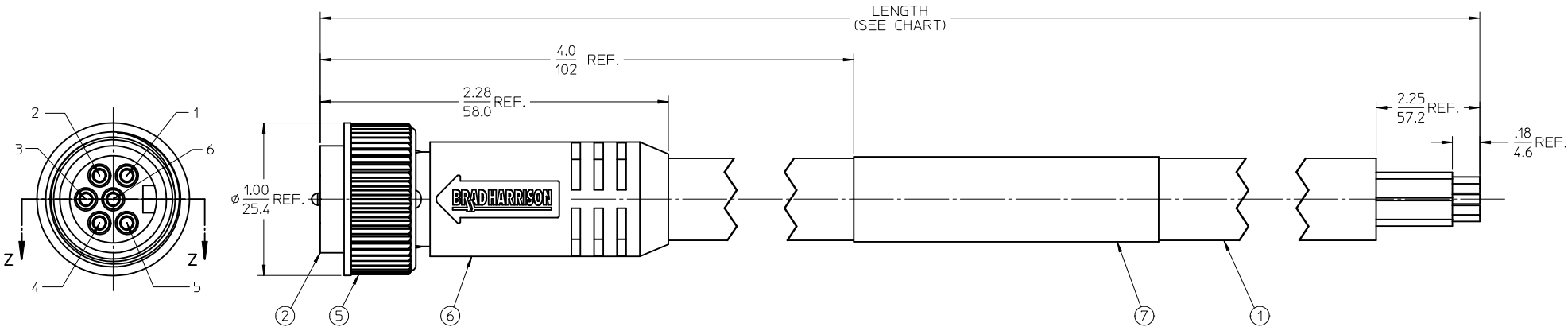
- NOTES:
1. MATERIAL: SEE TABLE
 2. FINISHES: SEE TABLE
 3. CABLE ASSEMBLIES ARE BAGGED SEPERATELY IN POLY BAGS WITH BARCODE LABEL ATTACHED TO OUTSIDE OF BAG
 4. WRAP LABEL IS MARKED WITH P/N, DATE CODE VOLTAGE & AMPERAGE
 5. MATES WITH: MINI CHANGE, A-SIZE 6 POLE RECEPTACLE
 6. ELECTRICAL SPECIFICATIONS:
VOLTAGE RATING: 600V
CURRENT RATING: 8 AMPS
 7. ASSEMBLY IS RoHS COMPLIANT

P1	
1	WHITE
2	RED
3	GREEN/YELLOW
4	ORANGE
5	BLACK
6	BLUE

WIRING DIAGRAM



Section Z-Z



ITEM	QTY.	DESCRIPTION	MATERIAL	FINISH
7	1	LABEL	PLASTIC FILM	BLACK/YELLOW
6	1	OVERMOLD, STRAIGHT	PVC	YELLOW
5	1	COUPLING NUT, FEMALE	ZINC DIE CAST	BLACK
4	1	FRICTION RING	NYLON	WHITE
3	6	CONTACT PIN, 16 AWG	BRASS	GOLD PLATED
2	1	INSERT, MALE, 6 POLE	PVC	YELLOW
1	1	CABLE, ST00W/ST #16/6	PVC JACKET	GRAY

PURCHASING DRAWING EC NO: WNA 2009-0810 DRAWN: LHMARTMAN 2009/06/11 CHKD: RSTONE APPR: JFMURPHY 2009/08/17 A	DESCRIPTION QUALITY SYMBOLS ▽=0 ▽=0	GENERAL TOLERANCES (UNLESS SPECIFIED)		DIMENSION STYLE IN/MM		SCALE 2:1	DESIGN UNITS INCH	THIRD ANGLE PROJECTION		
			mm	INCH	DRAWN BY LHMARTMAN	DATE 2009/06/05	TITLE MINI-CHANGE PORTABLE 6 POLE MALE STRAIGHT #16/6 YELLOW STOOV/ST			
		4 PLACES	± ---	± ---	CHECKED BY RSTONE	DATE 2009/06/08	MOLEX MOLEX INCORPORATED			
		3 PLACES	± ---	±.005						
		2 PLACES	± ---	±.010						
		1 PLACE	± ---	±.020	APPROVED BY JFMURPHY	DATE 2009/06/08	DOCUMENT NO. SD-130006-006			
		ANGULAR ±1/2°			MATERIAL NO.	SEE CHART				
		DRAFT WHERE APPLICABLE MUST REMAIN WITHIN DIMENSIONS			SIZE C	THIS DRAWING CONTAINS INFORMATION THAT IS PROPRIETARY TO MOLEX INCORPORATED AND SHOULD NOT BE USED WITHOUT WRITTEN PERMISSION				