



Chipsmall Limited consists of a professional team with an average of over 10 year of expertise in the distribution of electronic components. Based in Hongkong, we have already established firm and mutual-benefit business relationships with customers from,Europe,America and south Asia,supplying obsolete and hard-to-find components to meet their specific needs.

With the principle of “Quality Parts,Customers Priority,Honest Operation,and Considerate Service”,our business mainly focus on the distribution of electronic components. Line cards we deal with include Microchip,ALPS,ROHM,Xilinx,Pulse,ON,Everlight and Freescale. Main products comprise IC,Modules,Potentiometer,IC Socket,Relay,Connector.Our parts cover such applications as commercial,industrial, and automotives areas.

We are looking forward to setting up business relationship with you and hope to provide you with the best service and solution. Let us make a better world for our industry!



Contact us

Tel: +86-755-8981 8866 Fax: +86-755-8427 6832

Email & Skype: info@chipsmall.com Web: www.chipsmall.com

Address: A1208, Overseas Decoration Building, #122 Zhenhua RD., Futian, Shenzhen, China



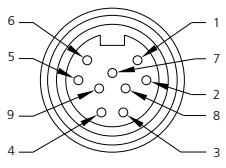
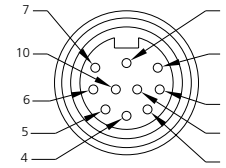
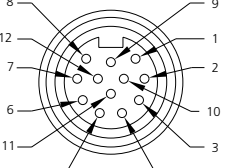


Single-Ended Cordsets

#16 AWG yellow ST00W cable – U.S. color code

Oil-resistant PVC jacket

Low-resistance contact design with gold/palladium nickel plating

| | 9P | 10P | 12P |
|------------------|--|--|---|
| FEMALE FACE VIEW |  |  |  |
| COLOR CODE | 1- orange 2- blue 3- red-black trace 4- green-black trace 5- white 6- red 7- green-gnd 8- white-black trace 9- black | 1- orange 2- blue 3- white-black trace 4- red-black trace 5- green-black trace 6- orange-black trace 7- red 8- green-gnd 9- black 10- white | 1- orange 2- blue 3- white-black trace 4- red-black trace 5- green-black trace 6- orange-black trace 7- blue-black trace 8- black-white trace 9- green-gnd 10- red 11- white 12- black |
| VOLTAGE | 600V AC/DC | 600V AC/DC | 600V AC/DC |
| CURRENT | 7A | 7A | 5A |
| CONDUCTOR | #16-9 | #16-10 | #16-12 |

| FEMALE | FIG | SINGLE-ENDED CORDSETS WITH #16 AWG ST00W CABLE 3 FEET LONG | | |
|--------------------|-----|--|---------------|---------------|
| STRAIGHT | 1 | 309000A01F030 | 301000A01F030 | 302000A01F030 |
| 90° | 2 | 309001A01F030 | 301001A01F030 | 302001A01F030 |
| MATING RECEPTACLE* | 5 | 3R9006A20A120 | 3R1006A20A120 | 3R2006A20A120 |
| MALE | FIG | SINGLE-ENDED CORDSETS WITH #16 AWG ST00W CABLE 3 FEET LONG | | |
| STRAIGHT | 3 | 309002A01F030 | 301002A01F030 | 302002A01F030 |
| 90° | 4 | 309003A01F030 | 301003A01F030 | 302003A01F030 |
| MATING RECEPTACLE* | 5 | 3R9004A20A120 | 3R1004A20A120 | 3R2004A20A120 |

CATALOG OPTIONS

*See Page 82 for additional Mating Receptacles

Use the following chart to modify your part's specifications

309000A01F0301

CABLE LENGTH

| | |
|-----|-----|
| 6' | 060 |
| 12' | 120 |
| 20' | 200 |

COUPLING NUT

STAINLESS STEELADD 1

Specifications

CONNECTOR DIMENSIONS

FEMALE STRAIGHT

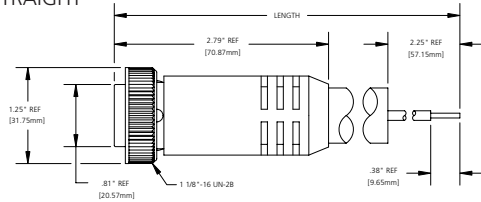


FIG 1

FEMALE 90°

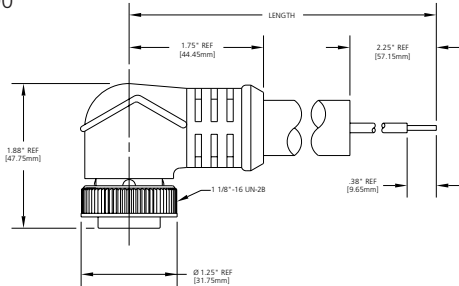
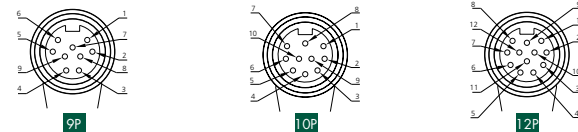


FIG 2

FEMALE CONNECTORS - FACE VIEWS



MALE STRAIGHT

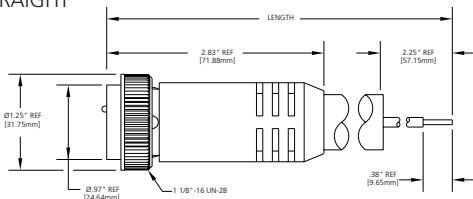


FIG 3

MALE 90°

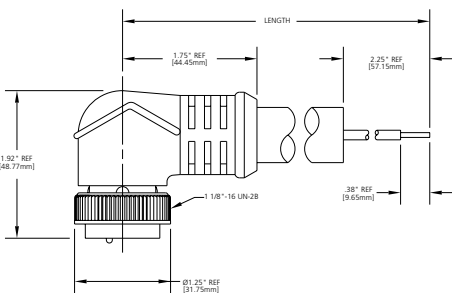
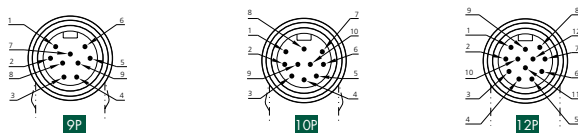


FIG 4

MALE CONNECTORS - FACE VIEWS



MECHANICAL
CONNECTOR FACE:
MOLDED BODY:
COUPLING NUT:

PVC - UL STD 94 - V0
PVC - UL STD 94 - V0
ZINC DIECAST W/ BLACK EPOXY
COAT, OPTIONAL STAINLESS STEEL
TYPE 303

CABLE:
YELLOW, #16 AWG, PVC JACKET &
PVC CONDUCTOR INSULATION
OVER 65 X #34 COPPER STRANDING,
600V, UL STYLE ST00W CSA ST

OUTSIDE DIAMETER:
9P - .64" (16.3mm)
10P - .66" (16.8mm)
12P - .71" (18.0mm)

ELECTRICAL
VOLTAGE RATING:
AMPERAGE:

600 V AC/DC
9P - 7A
10P - 7A
12P - 5A

ENVIRONMENTAL
PROTECTION:
AMBIENT OPERATING TEMP:

IP 68, NEMA 6P
-4° to 221° F (-20° to 105° C)

CERTIFICATIONS

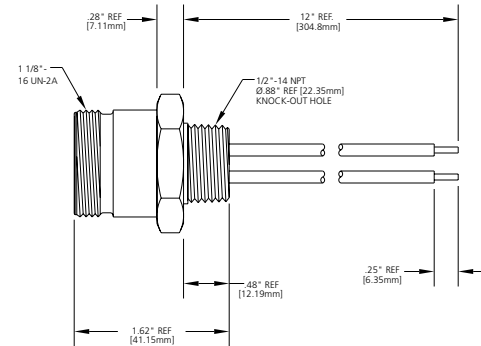
UL:
CSA:

UL RECOGNIZED, File No. E46237
CSA CERTIFIED, File No. LR6837

RECEPTACLE DIMENSIONS

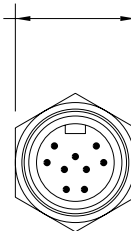
MALE STRAIGHT WITH 1/2" - 14NPT THREADS
FEMALE STRAIGHT WITH 1/2" - 14NPT THREADS

SEE PAGE 82 FOR
ADDITIONAL
RECEPTACLES



TYPICAL FACE VIEW

1.25" REF
[31.75mm]



TYPICAL KNOCK OUT

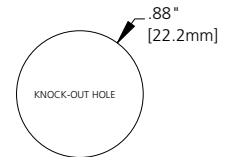


FIG 5

MALE RECEPTACLES - FACE VIEWS

