



Chipsmall Limited consists of a professional team with an average of over 10 year of expertise in the distribution of electronic components. Based in Hongkong, we have already established firm and mutual-benefit business relationships with customers from,Europe,America and south Asia,supplying obsolete and hard-to-find components to meet their specific needs.

With the principle of “Quality Parts,Customers Priority,Honest Operation,and Considerate Service”,our business mainly focus on the distribution of electronic components. Line cards we deal with include Microchip,ALPS,ROHM,Xilinx,Pulse,ON,Everlight and Freescale. Main products comprise IC,Modules,Potentiometer,IC Socket,Relay,Connector.Our parts cover such applications as commercial,industrial, and automotives areas.

We are looking forward to setting up business relationship with you and hope to provide you with the best service and solution. Let us make a better world for our industry!



Contact us

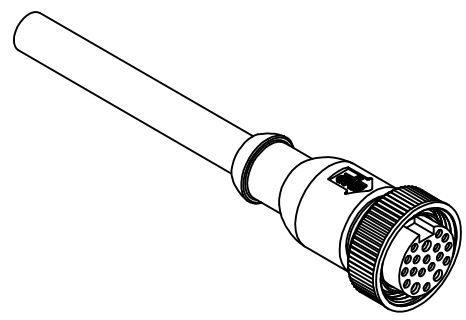
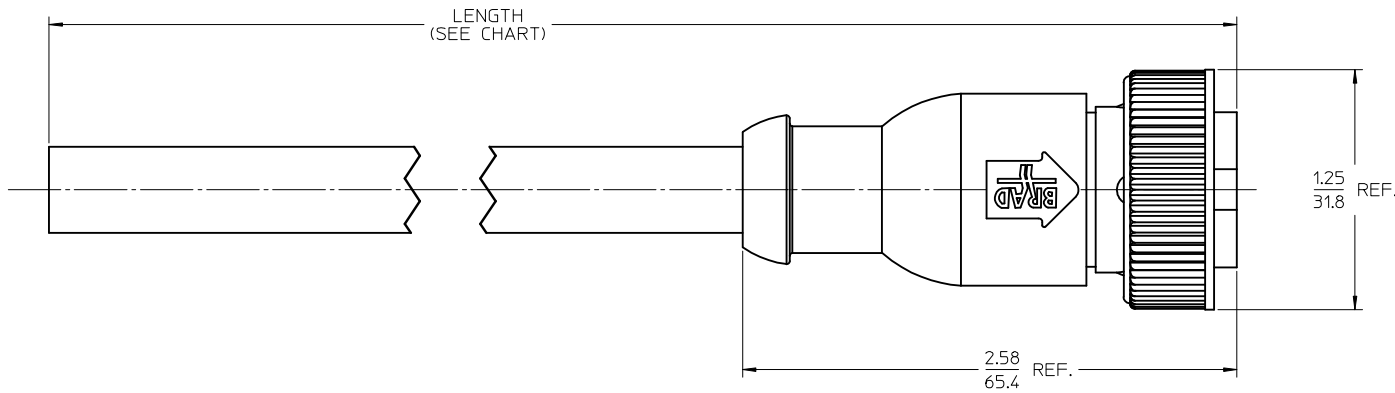
Tel: +86-755-8981 8866 Fax: +86-755-8427 6832

Email & Skype: info@chipsmall.com Web: www.chipsmall.com

Address: A1208, Overseas Decoration Building, #122 Zhenhua RD., Futian, Shenzhen, China



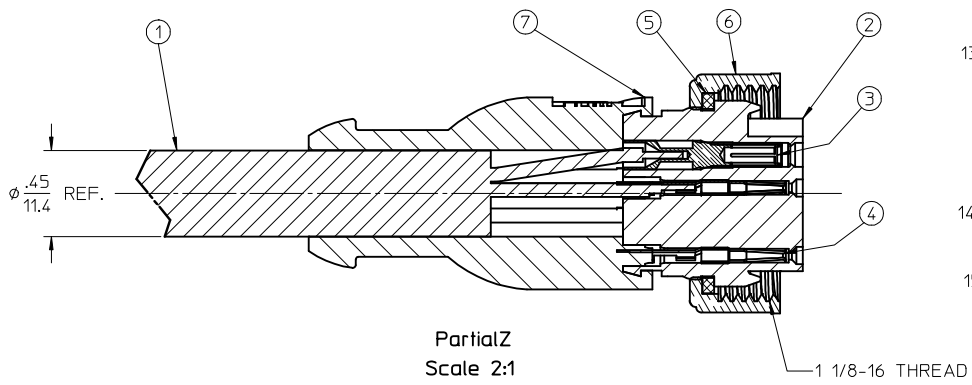
MATERIAL NO.	ENGINEERING NO.	LENGTH
1300080303	303000P80M050	16' 5" +6.50-0 (5M +16.5cm-0)
1300080306	303000P80M100	32' 10" +12.50-0 (10M +31.8cm-0)



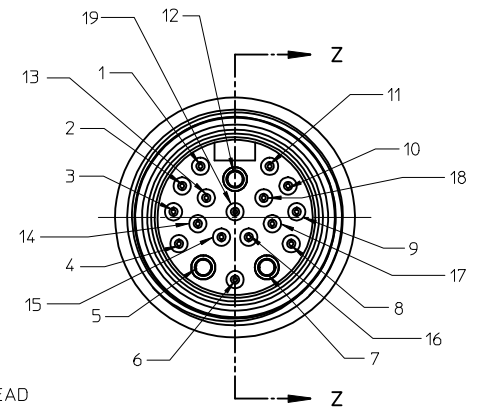
AUX. VIEW
SCALE 1:1

VIOLET	P1
RED	1
GRAY	2
RED/BLUE	3
BLUE (-VE)	4
GREEN	5
BROWN (+VE)	6
WHITE/GREEN	7
WHITE/YELLOW	8
WHITE/GRAY	9
BLACK	10
YELLOW/GREEN (GRD)	11
YELLOW/BROWN	12
BROWN/GREEN	13
WHITE	14
YELLOW	15
PINK	16
GRAY/BROWN	17
GRAY/PINK	18
	19

WIRING DIAGRAM



Partial Z
Scale 2:1



- NOTES:
- 1. MATERIAL: SEE TABLE
 - 2. FINISHES: SEE TABLE
 - 3. MATES WITH: 19 POLE MALE MINI-CHANGE
 - 4. ELECTRICAL SPECIFICATIONS:
 - VOLTAGE RATING: 300V AC/DC
 - CURRENT RATING: 3 AMPS (18 AWG)
 - 2 AMPS (22 AWG)
 - 5. ASSEMBLY IS RoHS COMPLIANT

7	1	OVERMOLD	PVC	YELLOW
6	1	COUPLING NUT, C-SIZE	DIE CAST ZINC	BLACK
5	1	FRICTION RING, C-SIZE	NYLON	WHITE
4	16	FEMALE CONTACT	Cu ALLOY	GOLD PLATED
3	3	FEMALE CONTACT/SLEEVE ASSY	BRASS/SS	GOLD PLATED
2	2	INSERT, FEMALE, 19 POLE	PVC	YELLOW
1	1	CABLE, 3 X 0.75mm² (18 AWG) + 16 X 0.34mm² (22 AWG)	PUR OUTER JACKET	BLACK
ITEM	QTY.	DESCRIPTION	MATERIAL	FINISH

RELEASED
EC NO: WNA2009-0660
DRAWN BY: DRWNRSTONE
CHKD BY: WOODMAN
APPR: JF MURPHY

2009/04/14
2009/04/17

DESCRIPTION

REV

QUALITY SYMBOLS
▽=0
▽=0

GENERAL TOLERANCES (UNLESS SPECIFIED)

	mm	INCH
4 PLACES	± .005	± .0005
3 PLACES	± .005	± .0005
2 PLACES	± .01	± .001
1 PLACE	± .03	± .001

ANGULAR ±1/2°

DRAFT WHERE APPLICABLE
MUST REMAIN
WITHIN DIMENSIONS

DIMENSION STYLE
IN/MM

DRAWN BY: R. STONE
DATE: 2009/04/13

CHECKED BY: B. WOODMAN
DATE: 2009/04/14

APPROVED BY: J. MURPHY
DATE: 2009/04/16

MATERIAL NO.

SEE CHART

SIZE: C

SCALE: 2:1

DESIGN UNITS: INCH

THIRD ANGLE PROJECTION

TITLE: MINI-CHANGE 19 POLE FEMALE, STRAIGHT CABLE ASSEMBLY

MOLEX INCORPORATED

DOCUMENT NO.: SD-130008-006

SHEET NO.: 1 OF 1

THIS DRAWING CONTAINS INFORMATION THAT IS PROPRIETARY TO MOLEX INCORPORATED AND SHOULD NOT BE USED WITHOUT WRITTEN PERMISSION