



Chipsmall Limited consists of a professional team with an average of over 10 year of expertise in the distribution of electronic components. Based in Hongkong, we have already established firm and mutual-benefit business relationships with customers from,Europe,America and south Asia,supplying obsolete and hard-to-find components to meet their specific needs.

With the principle of "Quality Parts,Customers Priority,Honest Operation,and Considerate Service",our business mainly focus on the distribution of electronic components. Line cards we deal with include Microchip,ALPS,ROHM,Xilinx,Pulse,ON,Everlight and Freescale. Main products comprise IC,Modules,Potentiometer,IC Socket,Relay,Connector.Our parts cover such applications as commercial,industrial, and automotives areas.

We are looking forward to setting up business relationship with you and hope to provide you with the best service and solution. Let us make a better world for our industry!



## Contact us

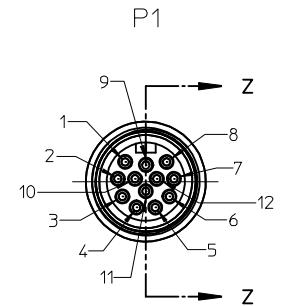
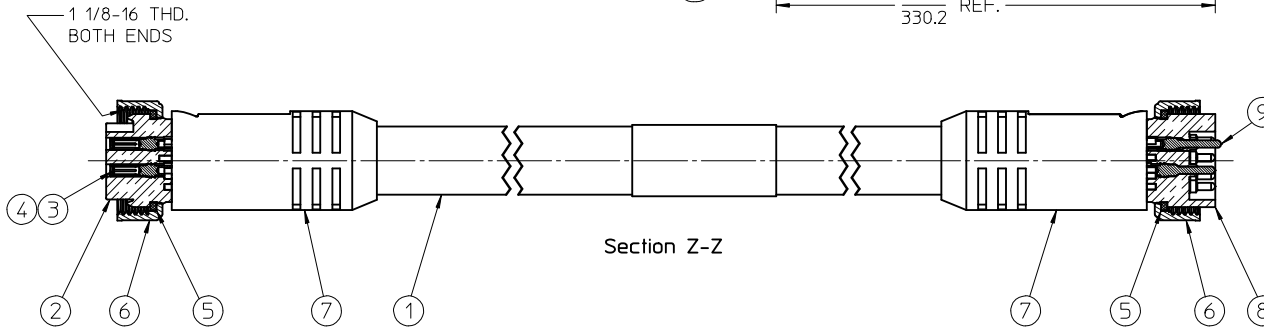
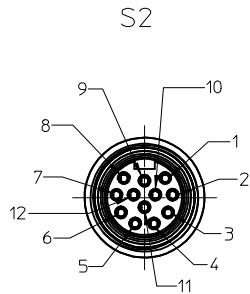
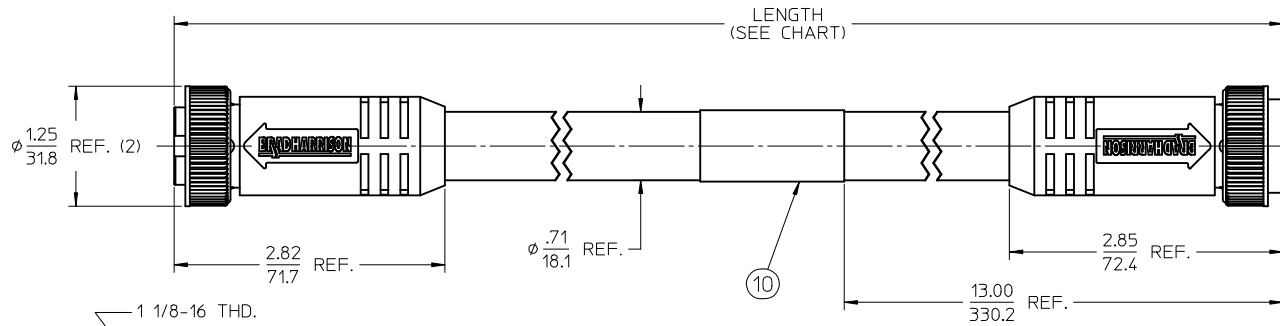
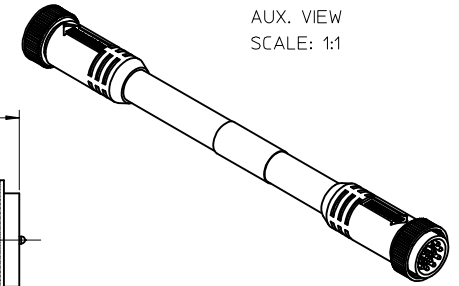
Tel: +86-755-8981 8866 Fax: +86-755-8427 6832

Email & Skype: info@chipsmall.com Web: www.chipsmall.com

Address: A1208, Overseas Decoration Building, #122 Zhenhua RD., Futian, Shenzhen, China



PART NUMBER	ENGINEERING NO.	LENGTH
1300120113	332020A01F060	6' 0" +2.19 - 0 [ 1.8M +55.6 - 0 ]
1300120119	332020A01F120	12' 0" +3.50 - 0 [ 3.7M +88.9 - 0 ]
1300120127	332020A01F200	20' 0" +6.50 - 0 [ 6.1M +165.1 - 0 ]



- NOTES:
1. MATERIAL: SEE TABLE
  2. FINISHES: SEE TABLE
  3. CABLE ASSEMBLIES ARE BAGGED SEPERATELY IN POLY BAGS WITH BARCODE LABEL ATTACHED TO OUTSIDE OF BAG
  4. WRAP LABEL IS MARKED WITH P/N, DATE CODE VOLTAGE & AMPERAGE
  5. MATES WITH: MINI CHANGE, C-SIZE 12 POLE RECEPTACLE
  6. ELECTRICAL SPECIFICATIONS:  
VOLTAGE RATING: 600V  
CURRENT RATING: 5 AMPS
  7. ASSEMBLY IS RoHS COMPLIANT

S2	P1	
1	ORANGE	1
2	BLUE	2
3	WHITE/BLACK	3
4	RED/BLACK	4
5	GREEN/BLACK	5
6	ORANGE/BLACK	6
7	BLUE/BLACK	7
8	BLACK/WHITE	8
9	GREEN/YELLOW	9
10	RED	10
11	WHITE	11
12	BLACK	12

WIRING DIAGRAM

ITEM	QTY.	DESCRIPTION	MATERIAL	FINISH
10	1	LABEL	PLASTIC FILM	BLACK/YELLOW
9	12	PIN CONTACT	BRASS	GOLD PLATED
8	1	INSERT, MALE, 12 POLE	PVC	YELLOW
7	2	OVERMOLD	PVC	YELLOW
6	2	COUPLING NUT	ZINC DIE CAST	BLACK
5	2	FRICION RING	NYLON	NATURAL
4	12	SOCKET CONTACT	BRASS	GOLD PLATED
3	12	SOCKET SLEEVE	STAINLESS STEEL	
2	1	INSERT, FEMALE, 12 POLE	PVC	YELLOW
1	1	CABLE, 16-12 ST00W/ST	PVC JACKET	YELLOW

RELEASED EC NO: MNA2010-0101 DRAWN BY: DRWINRSTONE 2009/08/17 CHKD BY: WOODMAN APPR: J. MURPHY 2009/08/21 DESCRIPTION	QUALITY SYMBOLS	GENERAL TOLERANCES (UNLESS SPECIFIED)	DIMENSION STYLE	SCALE	DESIGN UNITS	THIRD ANGLE PROJECTION															
	$\nabla=0$ $\nabla=0$	<table border="1"> <thead> <tr> <th></th> <th>mm</th> <th>INCH</th> </tr> </thead> <tbody> <tr><td>4 PLACES</td><td>± ---</td><td>± ---</td></tr> <tr><td>3 PLACES</td><td>± ---</td><td>± ---</td></tr> <tr><td>2 PLACES</td><td>± ---</td><td>± .01</td></tr> <tr><td>1 PLACE</td><td>± 0.3</td><td>± ---</td></tr> </tbody> </table>		mm	INCH	4 PLACES	± ---	± ---	3 PLACES	± ---	± ---	2 PLACES	± ---	± .01	1 PLACE	± 0.3	± ---	IN/MM	1:1	INCH	
		mm	INCH																		
	4 PLACES	± ---	± ---																		
3 PLACES	± ---	± ---																			
2 PLACES	± ---	± .01																			
1 PLACE	± 0.3	± ---																			
			DRAWN BY: R. STONE 2009/08/13	TITLE	MINI-CHANGE MALE/FEM 12 POLE, 16 AWG																
			CHECKED BY: B. WOODMAN 2009/08/17																		
			APPROVED BY: J. MURPHY 2009/08/20																		
			MATERIAL NO.	DOCUMENT NO.		SHEET NO.															
			SEE CHART		MOLEX INCORPORATED	1 OF 1															
			DRAFT WHERE APPLICABLE MUST REMAIN WITHIN DIMENSIONS																		
			SIZE C		THIS DRAWING CONTAINS INFORMATION THAT IS PROPRIETARY TO MOLEX INCORPORATED AND SHOULD NOT BE USED WITHOUT WRITTEN PERMISSION																