



Chipsmall Limited consists of a professional team with an average of over 10 year of expertise in the distribution of electronic components. Based in Hongkong, we have already established firm and mutual-benefit business relationships with customers from,Europe,America and south Asia,supplying obsolete and hard-to-find components to meet their specific needs.

With the principle of “Quality Parts,Customers Priority,Honest Operation,and Considerate Service”,our business mainly focus on the distribution of electronic components. Line cards we deal with include Microchip,ALPS,ROHM,Xilinx,Pulse,ON,Everlight and Freescale. Main products comprise IC,Modules,Potentiometer,IC Socket,Relay,Connector.Our parts cover such applications as commercial,industrial, and automotives areas.

We are looking forward to setting up business relationship with you and hope to provide you with the best service and solution. Let us make a better world for our industry!



## Contact us

Tel: +86-755-8981 8866 Fax: +86-755-8427 6832

Email & Skype: [info@chipsmall.com](mailto:info@chipsmall.com) Web: [www.chipsmall.com](http://www.chipsmall.com)

Address: A1208, Overseas Decoration Building, #122 Zhenhua RD., Futian, Shenzhen, China



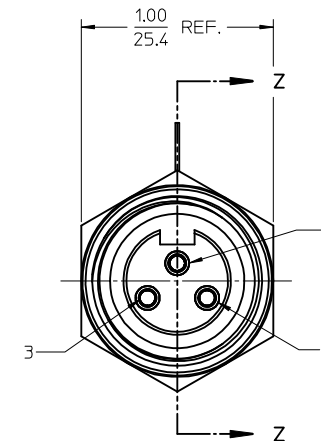
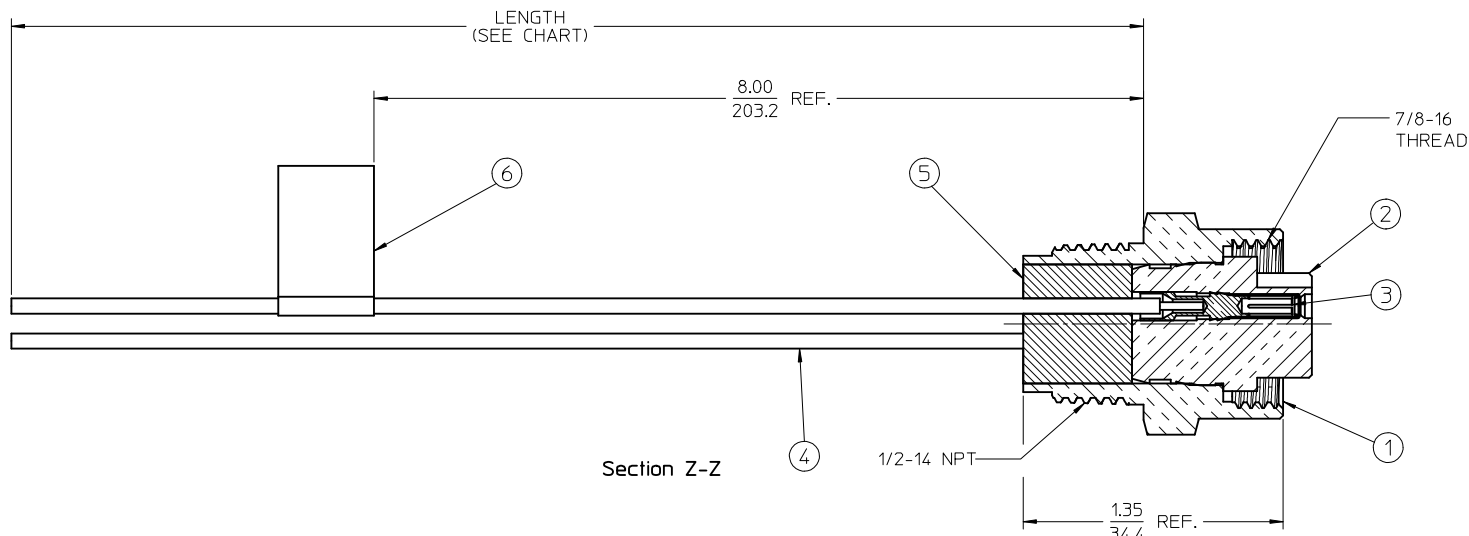
## PART NO. LEGEND ©

1R3000A20M005

WIRE TYPE: 16 AWG PVC

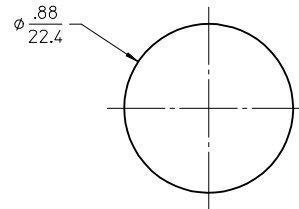
FINISHED LENGTH  
M005= 0.5 METER  
M010= 1 METER  
M100= 10 METERS

AUX. VIEW  
SCALE: 1:1



## NOTES:

1. MATERIAL: SEE TABLE
2. FINISHES: SEE TABLE
3. MATES WITH: 3C MINI CHANGE CABLE
4. ELECTRICAL SPECIFICATIONS:  
VOLTAGE RATING: 400V PER IEC 60664 ©  
600V PER UL 2238  
CURRENT RATING: 13.0 AMPS
5. PROTECTION: IP67 (WHEN MATED) ©



KNOCKOUT HOLE

GREEN/YELLOW	1
BLACK	2
WHITE	3

WIRE DIAGRAM

6	1	LABEL	VINYL	BLACK/YELLOW
5	1	POTTING MATERIAL	EPOXY	
4	3	WIRE, 16 AWG	PVC INSULATION	SEE WIRE DIAGRAM
3	3	CONTACT SOCKET & SLEEVE ASSY.	Cu ALLOY/ST. STEEL	GOLD PLATED
2	1	INSERT	PVC	YELLOW
1	1	RECEPTACLE SHELL	ZINC DIECAST	NICKEL PLATED
ITEM	QTY.	DESCRIPTION	MATERIAL	FINISH

REV ELEC. SPECS. NOTE 5  
ADD P/N LEGEND  
EC NO: JFG2017-0392  
2016/10/18  
2016/10/27  
2016/11/23  
DRAWN BY: DRWNRSTONE  
CHKD BY: CHKDK COX  
APPR: BWOODMAN

QUALITY SYMBOLS  
▽=0  
▽=0

GENERAL TOLERANCES (UNLESS SPECIFIED)

	mm	INCH
4 PLACES ±	---	---
3 PLACES ±	---	±.005
2 PLACES ±	0.13	±.01
1 PLACE ±	0.3	±.020

ANGULAR ±1/2°

DRAFT WHERE APPLICABLE  
MUST REMAIN  
WITHIN DIMENSIONS

DIMENSION STYLE  
IN/MM

DRAWN BY: R.STONE  
DATE: 2009/08/25

CHECKED BY: B.WOODMAN  
DATE: 2009/08/27

APPROVED BY: JFMURPHY  
DATE: 2009/08/26

MATERIAL NO. -

SIZE C

SCALE 2:1  
DESIGN UNITS INCH  
THIRD ANGLE PROJECTION

TITLE  
MINI-CHANGE, RECEPTACLE  
3P, FEMALE, 16 AWG

MOLEX INCORPORATED

DOCUMENT NO. SD-130013-085  
SHEET NO. 1 OF 1

THIS DRAWING CONTAINS INFORMATION THAT IS PROPRIETARY TO MOLEX INCORPORATED AND SHOULD NOT BE USED WITHOUT WRITTEN PERMISSION