



Chipsmall Limited consists of a professional team with an average of over 10 year of expertise in the distribution of electronic components. Based in Hongkong, we have already established firm and mutual-benefit business relationships with customers from,Europe,America and south Asia,supplying obsolete and hard-to-find components to meet their specific needs.

With the principle of “Quality Parts,Customers Priority,Honest Operation,and Considerate Service”,our business mainly focus on the distribution of electronic components. Line cards we deal with include Microchip,ALPS,ROHM,Xilinx,Pulse,ON,Everlight and Freescale. Main products comprise IC,Modules,Potentiometer,IC Socket,Relay,Connector.Our parts cover such applications as commercial,industrial, and automotives areas.

We are looking forward to setting up business relationship with you and hope to provide you with the best service and solution. Let us make a better world for our industry!



Contact us

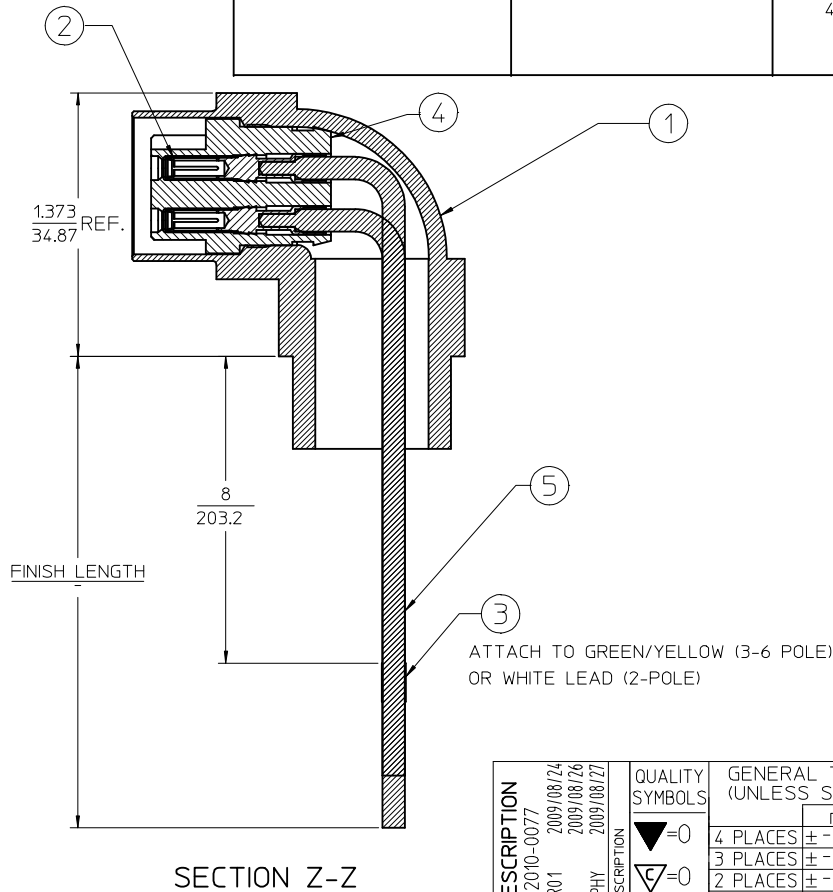
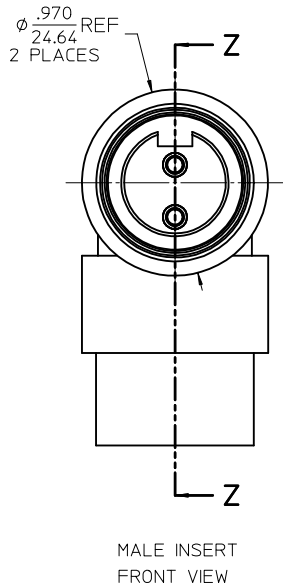
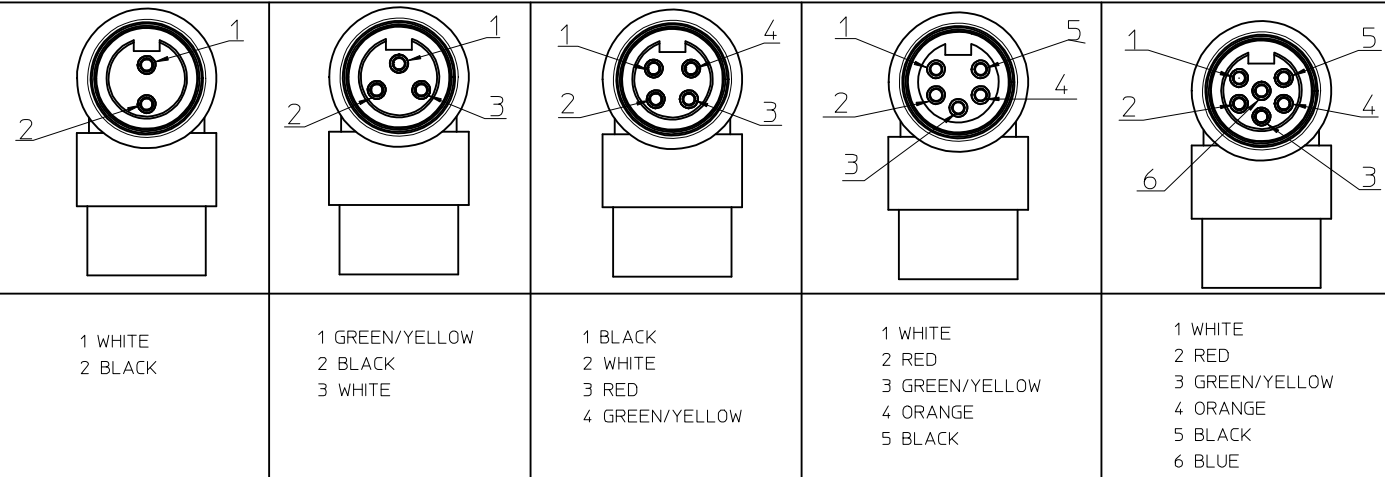
Tel: +86-755-8981 8866 Fax: +86-755-8427 6832

Email & Skype: info@chipsmall.com Web: www.chipsmall.com

Address: A1208, Overseas Decoration Building, #122 Zhenhua RD., Futian, Shenzhen, China



FACE VIEW - FEMALE INSERT SCALE 1.5 : 1



FINAL ASSEMBLY
1300130074

ENTER DESCRIPTION EC NO: WNA2010-0077 DRAWN BY: NKUMAR01 CHKD: 2009/08/26 APP: JFMURPHY 2009/08/27	DESCRIPTION	QUALITY SYMBOLS ▽=0 ▽=0	GENERAL TOLERANCES (UNLESS SPECIFIED)		DIMENSION STYLE IN/MM		SCALE 2:1	DESIGN UNITS INCH	THIRD ANGLE PROJECTION		
				mm	INCH	DRAWN BY NKUMAR01	DATE 21/08/09	TITLE MC 2P FR 12IN. 90D 16/1 PVC			
			4 PLACES	± ---	± ---	CHECKED BY BWOODMAN	DATE 21/08/09				
			3 PLACES	± ---	± ---	APPROVED BY JFMURPHY		DATE 2009/08/26	MOLEX MOLEX INCORPORATED		
			2 PLACES	± ---	± ---	MATERIAL NO. SEE SHEET 2		DOCUMENT NO. SD-130013-074			
			1 PLACE	± ---	± ---	DRAFT WHERE APPLICABLE MUST REMAIN WITHIN DIMENSIONS		THIS DRAWING CONTAINS INFORMATION THAT IS PROPRIETARY TO MOLEX INCORPORATED AND SHOULD NOT BE USED WITHOUT WRITTEN PERMISSION			
			ANGULAR ±1/2°		SIZE						

