



Chipsmall Limited consists of a professional team with an average of over 10 year of expertise in the distribution of electronic components. Based in Hongkong, we have already established firm and mutual-benefit business relationships with customers from,Europe,America and south Asia,supplying obsolete and hard-to-find components to meet their specific needs.

With the principle of “Quality Parts,Customers Priority,Honest Operation,and Considerate Service”,our business mainly focus on the distribution of electronic components. Line cards we deal with include Microchip,ALPS,ROHM,Xilinx,Pulse,ON,Everlight and Freescale. Main products comprise IC,Modules,Potentiometer,IC Socket,Relay,Connector.Our parts cover such applications as commercial,industrial, and automotives areas.

We are looking forward to setting up business relationship with you and hope to provide you with the best service and solution. Let us make a better world for our industry!



Contact us

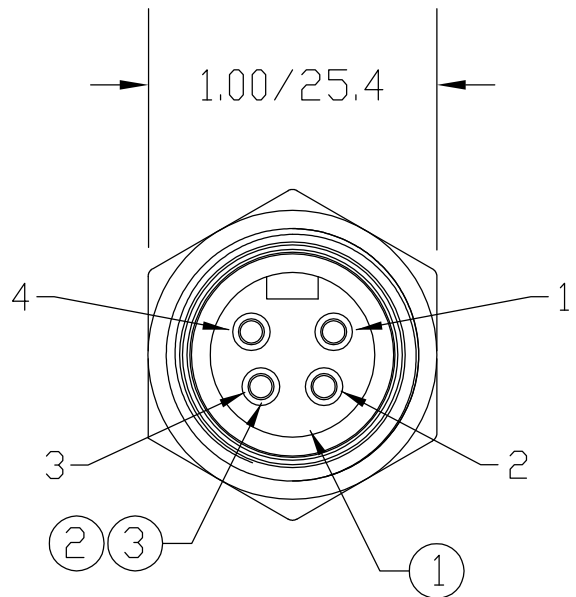
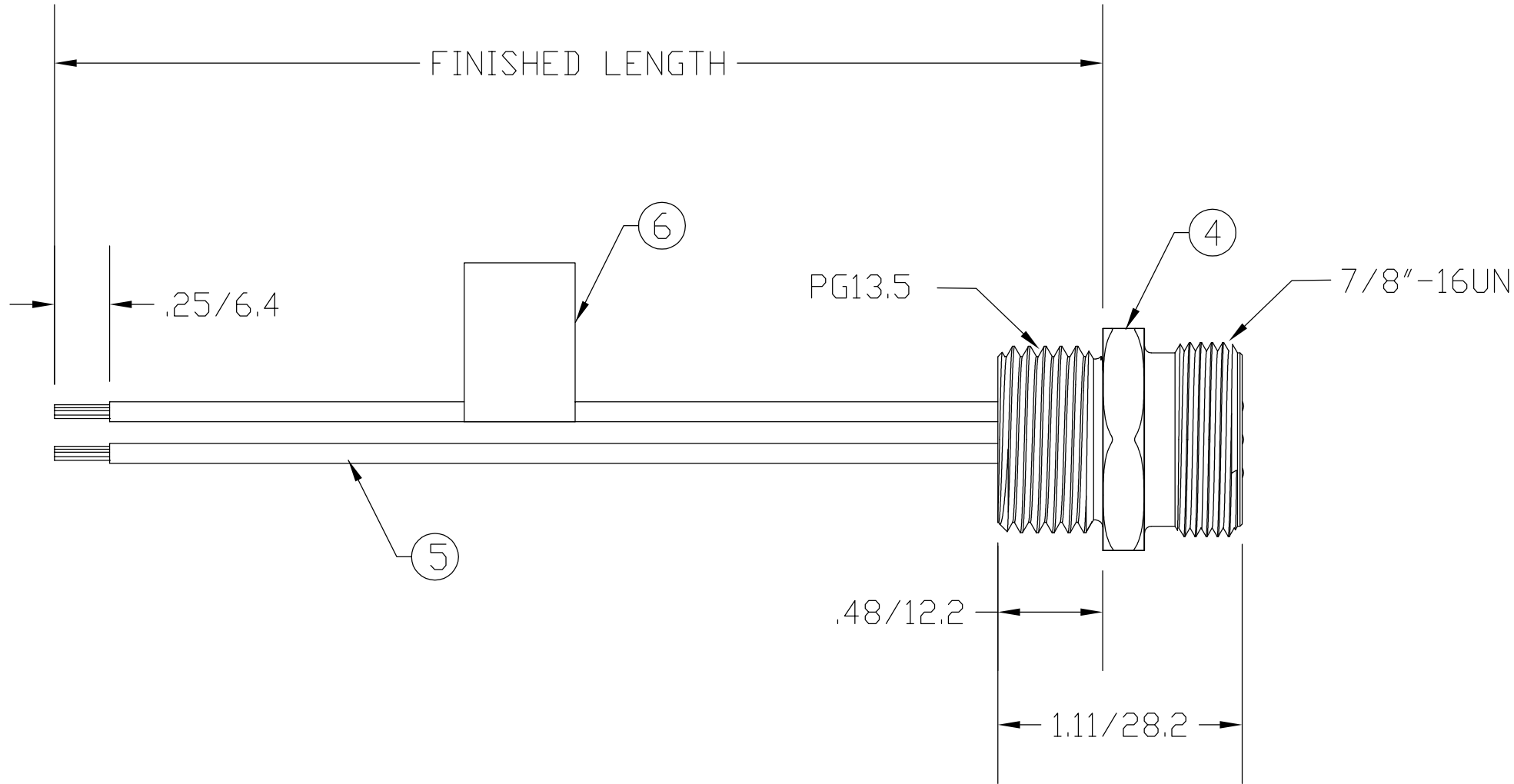
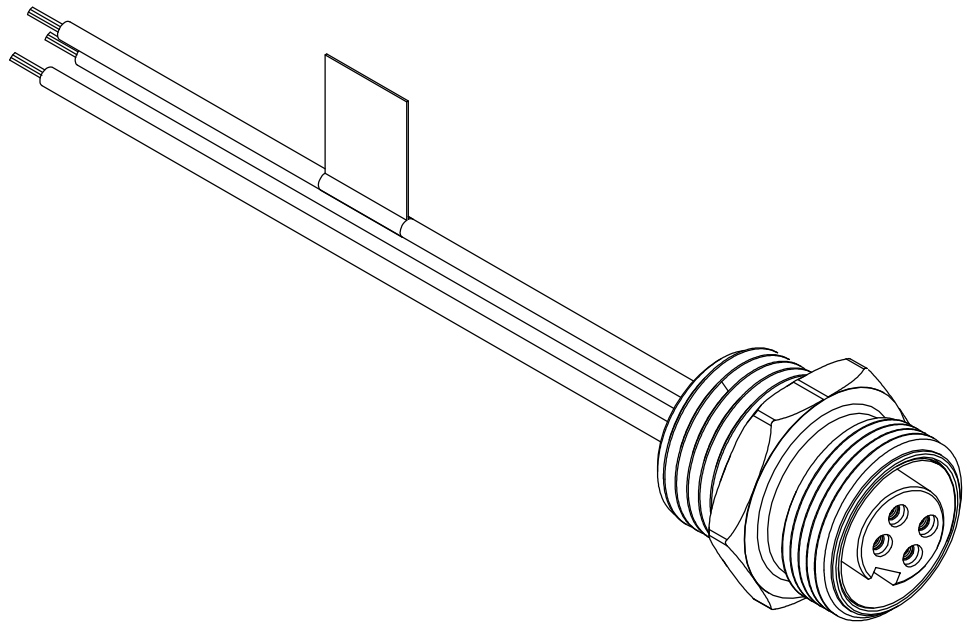
Tel: +86-755-8981 8866 Fax: +86-755-8427 6832

Email & Skype: info@chipsmall.com Web: www.chipsmall.com

Address: A1208, Overseas Decoration Building, #122 Zhenhua RD., Futian, Shenzhen, China



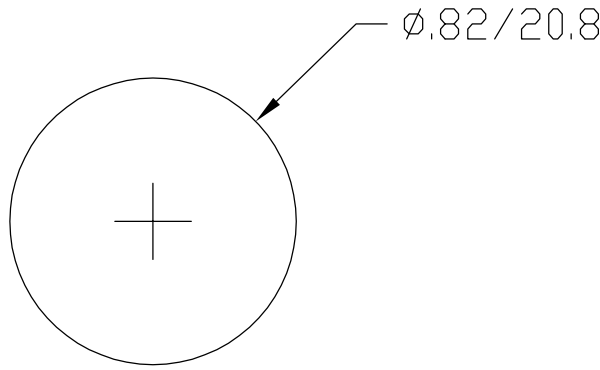
MATERIAL NUMBER	OLD PART NUMBER	FINISHED LENGTH
130013-0393	1R4D04A16M020	6.56" +3.50" -0 [2.0M +88.9 -0]



1	BLACK
2	BLUE
3	BROWN
4	WHITE

WIRING DIAGRAM

FEMALE FACE VIEW



KNOCKOUT HOLE

ITEM	COMPONENT	MATERIAL	FINISH
1	INSERT	PVC	YELLOW
2	CONTACT SOCKET	COPPER ALLOY	GOLD OVER NICKEL
3	SOCKET SLEEVE	STAINLESS STEEL	
4	RECEPTACLE SHELL	ZINC DIE CAST	BLACK E-COATED
5	CONDUCTOR - 18 AWG. 16 x #30 COPPER STRANDING, 600V	PVC	SEE WIRING DIAGRAM
6	FLAG LABEL	PLASTIC FILM	BLACK/YELLOW

VOLTAGE RATING	300 VAC/VDC
AMPERAGE RATING	5.6 AMPS
PROTECTION	IP67
OPERATING TEMPERATURE	-20°C TO 105°C
CSA CERTIFICATIONS	CSA CERTIFIED, FILE NO. LR6837

RLSD DRAWING EC NO: WNA2009-0849 DRWN: BWOODMAN 6/18/09 CH'KD: JM APPR: JFMURPHY 2009/07/08 A	DESCRIPTION REV	QUALITY SYMBOL <div>▽=0</div> <div>▽C=0</div>	GENERAL TOLERANCES (UNLESS SPECIFIED)			DIMENSION STYLE		SCALE	DESIGN UNITS	THIRD ANGLE PROJECTION	
						IN/MM		----	----		
				mm	INCH	DRAWN BY	DATE	TITLE MINI-CHANGE RECEPTACLE 4 POLE FEMALE PG13.5 IEC COLOR CODE <div>molex</div> MOLEX INCORPORATED	SHEET NO. 1 OF 1		
			4 PLACES	±----	±----	BW	2009/06/18				
			3 PLACES	±----	±----	CHECKED BY	DATE				
			2 PLACES	±----	±.01	LH	2009/06/18				
			1 PLACE	±0.3	±----	APPROVED BY	DATE				
			ANGULAR ±----°			----	----	DOCUMENT NO. SD-130013-007			
			DRAFT WHERE APPLICABLE MUST REMAIN WITHIN DIMENSIONS			MATERIAL NO. SEE CHART					
						SIZE C	THIS DRAWING CONTAINS INFORMATION THAT IS PROPRIETARY TO MOLEX INCORPORATED AND SHOULD NOT BE USED WITHOUT WRITTEN PERMISSION				