



Chipsmall Limited consists of a professional team with an average of over 10 year of expertise in the distribution of electronic components. Based in Hongkong, we have already established firm and mutual-benefit business relationships with customers from,Europe,America and south Asia,supplying obsolete and hard-to-find components to meet their specific needs.

With the principle of "Quality Parts,Customers Priority,Honest Operation,and Considerate Service",our business mainly focus on the distribution of electronic components. Line cards we deal with include Microchip,ALPS,ROHM,Xilinx,Pulse,ON,Everlight and Freescale. Main products comprise IC,Modules,Potentiometer,IC Socket,Relay,Connector.Our parts cover such applications as commercial,industrial, and automotives areas.

We are looking forward to setting up business relationship with you and hope to provide you with the best service and solution. Let us make a better world for our industry!



## Contact us

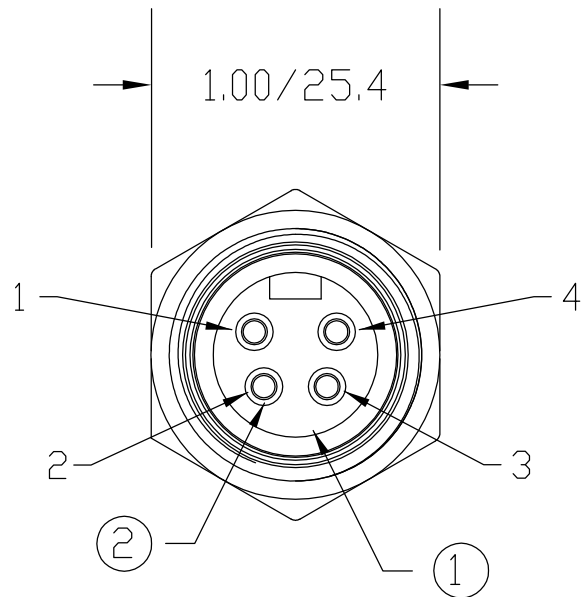
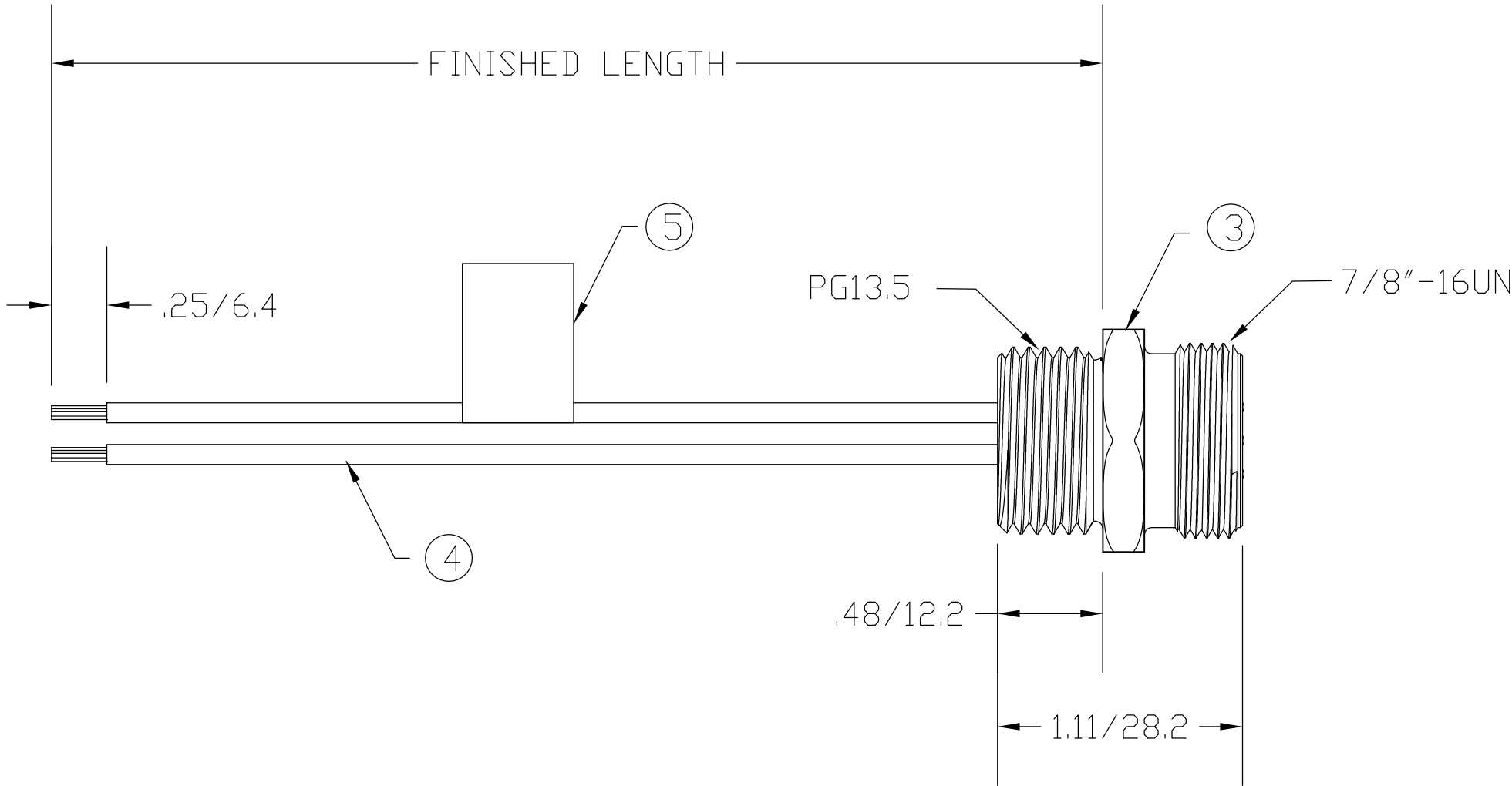
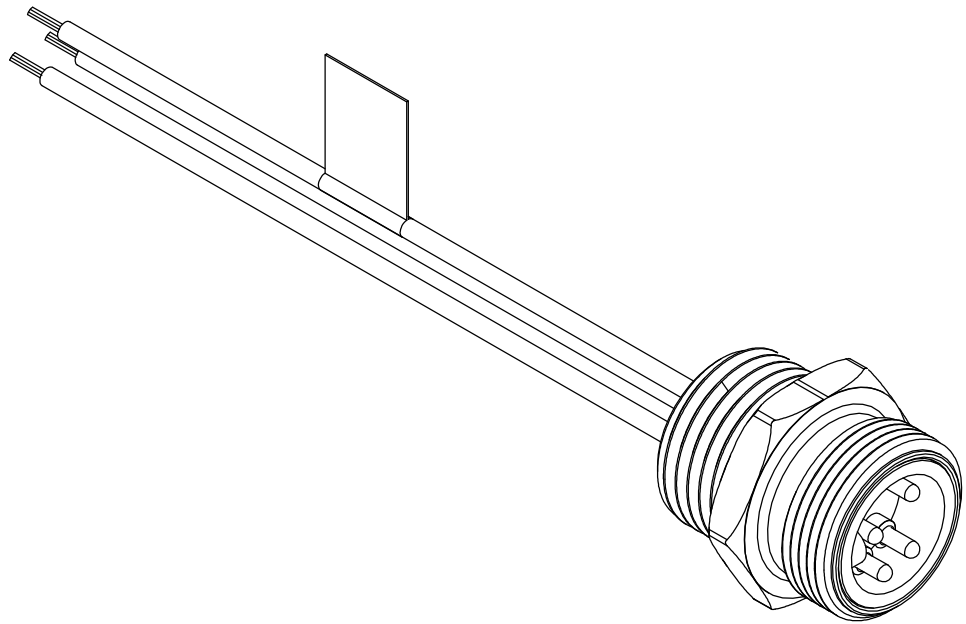
Tel: +86-755-8981 8866 Fax: +86-755-8427 6832

Email & Skype: [info@chipsmall.com](mailto:info@chipsmall.com) Web: [www.chipsmall.com](http://www.chipsmall.com)

Address: A1208, Overseas Decoration Building, #122 Zhenhua RD., Futian, Shenzhen, China

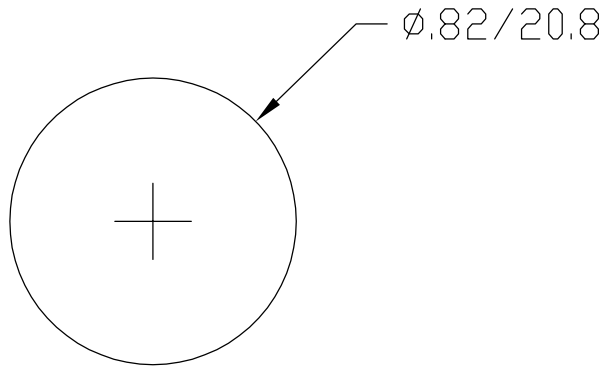


MATERIAL NUMBER	OLD PART NUMBER	FINISHED LENGTH
130013-0396	1R4D06A16A120	12.00" +.75" -0 [.3M +19.1 -0]
130013-0399	1R4D06A16M010	3.28' +2.19" -0 [1.0M +55.6 -0]
130013-0398	1R4D06A16F060	6.00' +2.19" -0 [1.8M +55.6 -0]
130013-0401	1R4D06A16M050	16.42' +6.50" -0 [5.0M +165.1 -0]



1	BLACK
2	BLUE
3	BROWN
4	WHITE

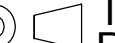
WIRING DIAGRAM



KNOCKOUT HOLE

ITEM	COMPONENT	MATERIAL	FINISH
1	INSERT	PVC	YELLOW
2	CONTACT PIN	COPPER ALLOY	GOLD OVER NICKEL
3	RECEPTACLE SHELL	ZINC DIE CAST	BLACK E-COATED
4	CONDUCTOR - 18 AWG. 16 x #30 COPPER STRANDING, 600V	PVC	SEE WIRING DIAGRAM
5	FLAG LABEL	PLASTIC FILM	BLACK/YELLOW

VOLTAGE RATING	300 VAC/VDC
AMPERAGE RATING	5.6 AMPS
PROTECTION	IP67
OPERATING TEMPERATURE	-20°C TO 105°C
CSA CERTIFICATIONS	CSA CERTIFIED, FILE NO. LR6837

RLSD DRAWING EC NO: WNA2009-0849 DRWN: BWOODMAN 6/18/09 CH'KD: JM APPR: JFMURPHY 2009/07/08 A	DESCRIPTION REV	QUALITY SYMBOL <div>▽=0</div> <div>▽C=0</div>	GENERAL TOLERANCES (UNLESS SPECIFIED)			DIMENSION STYLE IN/MM		SCALE ----	DESIGN UNITS ----	 THIRD ANGLE PROJECTION	
				mm	INCH	DRAWN BY BW	DATE 2009/06/18	TITLE MINI-CHANGE RECEPTACLE 4 POLE MALE PG13.5 IEC COLOR CODE			
			4 PLACES	±----	±----	CHECKED BY LH	DATE 2009/06/18				
			3 PLACES	±----	±----	APPROVED BY DATE		MOLEX INCORPORATED			
			2 PLACES	±----	±.01						
			1 PLACE	±0.3	±----	-----	-----	DOCUMENT NO. SD-130013-006			
			ANGULAR ±----°			MATERIAL NO. SEE CHART					
DRAFT WHERE APPLICABLE MUST REMAIN WITHIN DIMENSIONS			SIZE C	THIS DRAWING CONTAINS INFORMATION THAT IS PROPRIETARY TO MOLEX INCORPORATED AND SHOULD NOT BE USED WITHOUT WRITTEN PERMISSION							