



Chipsmall Limited consists of a professional team with an average of over 10 year of expertise in the distribution of electronic components. Based in Hongkong, we have already established firm and mutual-benefit business relationships with customers from,Europe,America and south Asia,supplying obsolete and hard-to-find components to meet their specific needs.

With the principle of “Quality Parts,Customers Priority,Honest Operation,and Considerate Service”,our business mainly focus on the distribution of electronic components. Line cards we deal with include Microchip,ALPS,ROHM,Xilinx,Pulse,ON,Everlight and Freescale. Main products comprise IC,Modules,Potentiometer,IC Socket,Relay,Connector.Our parts cover such applications as commercial,industrial, and automotives areas.

We are looking forward to setting up business relationship with you and hope to provide you with the best service and solution. Let us make a better world for our industry!



Contact us

Tel: +86-755-8981 8866 Fax: +86-755-8427 6832

Email & Skype: info@chipsmall.com Web: www.chipsmall.com

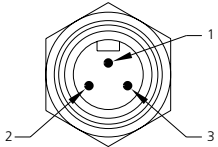
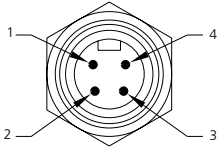
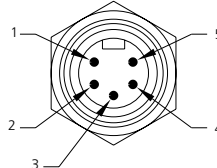
Address: A1208, Overseas Decoration Building, #122 Zhenhua RD., Futian, Shenzhen, China





Receptacles

#18 AWG PVC 12-inch leads - auto color code – epoxy potted
 Straight male & female
 Low-resistance contact design with gold/palladium nickel plating

	3P	4P	5P
MALE FACE VIEW			
COLOR CODE	1- green-gnd 2- red w/ black trace 3- red w/ white trace	1- red w/ black trace 3- red 2- red w/ white trace 4- green-gnd	1- red w/ white trace 4- red w/ yellow trace 2- red 5- red w/ black trace 3- green-gnd
VOLTAGE	300V AC/DC	300V AC/DC	300V AC/DC
CURRENT	10A	7A	5.6A
CONDUCTOR	#18-3	#18-4	#18-5

MALE	FIG	RECEPTACLES WITH #18 AWG PVC LEADS 12 INCHES LONG		
STRAIGHT	1	1R3006A17A120	1R4006A17A120	1R5006A17A120
FEMALE	FIG	RECEPTACLES WITH #18 AWG PVC LEADS 12 INCHES LONG		
STRAIGHT	2	1R3004A17A120	1R4004A17A120	1R5004A17A120

PART NO.	ACCESSORIES
5601	Locknut 1/2 "-14NPT, zinc plated steel
5611	Gasket, black neoprene

CATALOG OPTIONS

Use the following chart to modify your part's specifications

1R3006A17A120

CABLE LENGTH

3'	F030
6'	F060

Specifications



MECHANICAL

SHELL: ZINC DIECAST W/ BLACK EPOXY COAT, OPTIONAL STAINLESS STEEL TYPE 303

INSERT: PVC - UL STD 94 - V0

CONDUCTORS: #18 AWG, PVC INSULATION OVER 16 X #30 COPPER STRANDING, 300V, UL STYLE 1061, CSA AWM SR

ELECTRICAL

VOLTAGE RATING: 300 V AC/DC

AMPERAGE: 3P - 10A

4P - 7A

5P - 5.6A

ENVIRONMENTAL

PROTECTION: IP 68, NEMA 6P

AMBIENT OPERATING TEMP: -4° TO 176° F (-20° TO 80° C)

CERTIFICATIONS

UL: UL RECOGNIZED, FILE NO. E46237

CSA: CSA CERTIFIED, FILE NO. LR6837

RECEPTACLE DIMENSIONS

MALE STRAIGHT WITH 1/2" - 14NPT THREADS

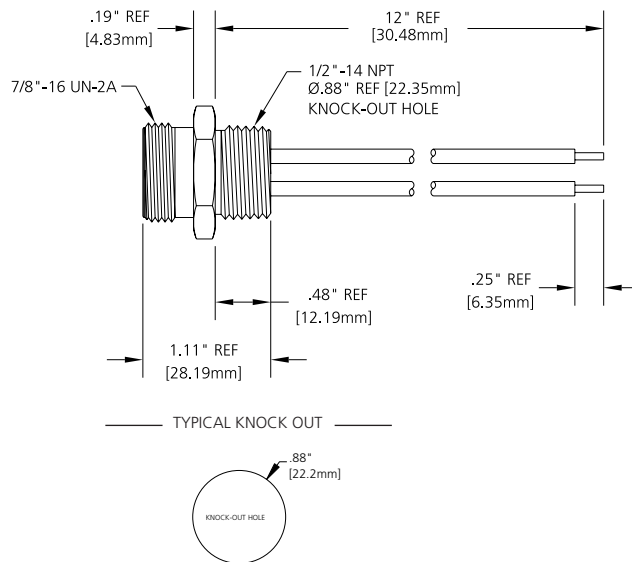


FIG 1

FEMALE STRAIGHT WITH 1/2" - 14NPT THREADS

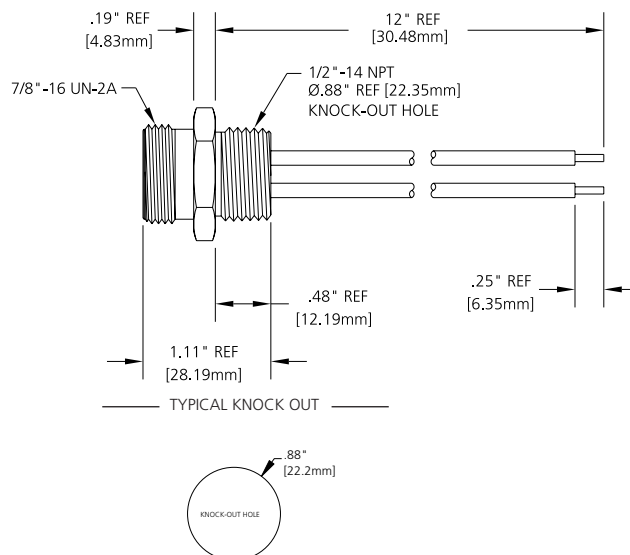


FIG 2

FEMALE FACE VIEW

