



Chipsmall Limited consists of a professional team with an average of over 10 year of expertise in the distribution of electronic components. Based in Hongkong, we have already established firm and mutual-benefit business relationships with customers from,Europe,America and south Asia,supplying obsolete and hard-to-find components to meet their specific needs.

With the principle of “Quality Parts,Customers Priority,Honest Operation,and Considerate Service”,our business mainly focus on the distribution of electronic components. Line cards we deal with include Microchip,ALPS,ROHM,Xilinx,Pulse,ON,Everlight and Freescale. Main products comprise IC,Modules,Potentiometer,IC Socket,Relay,Connector.Our parts cover such applications as commercial,industrial, and automotives areas.

We are looking forward to setting up business relationship with you and hope to provide you with the best service and solution. Let us make a better world for our industry!



Contact us

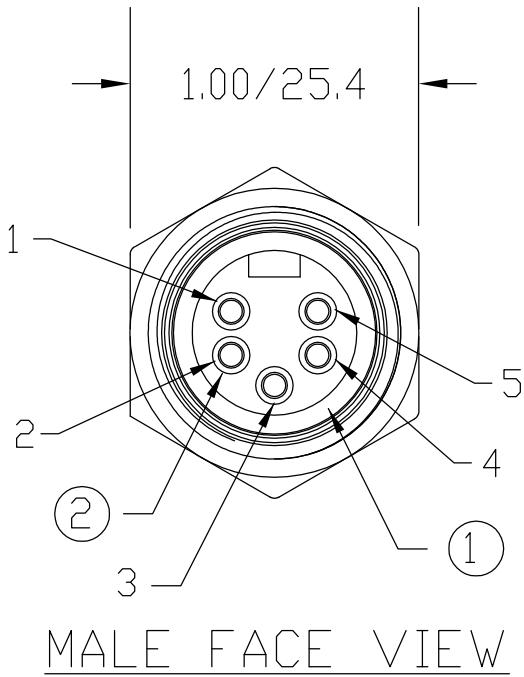
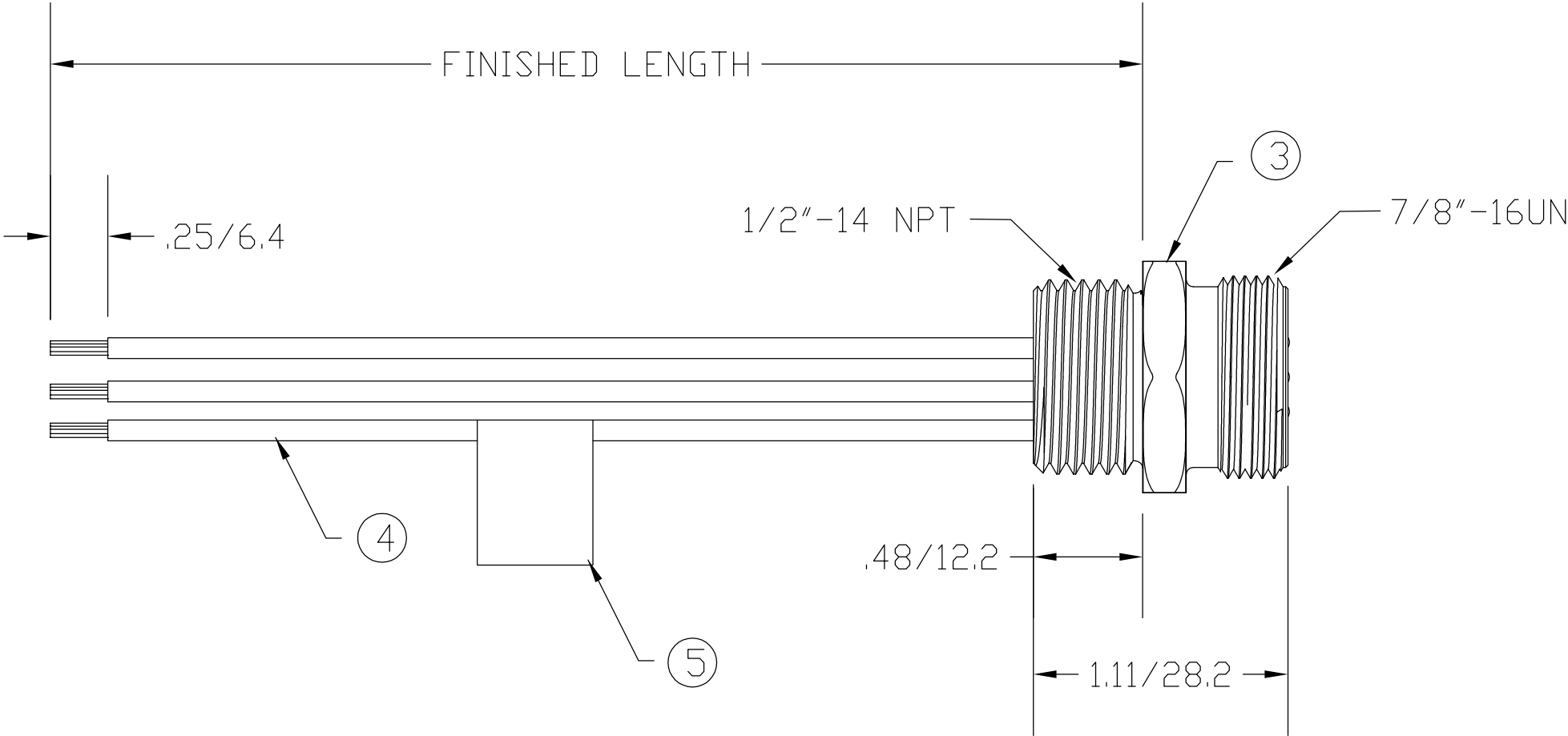
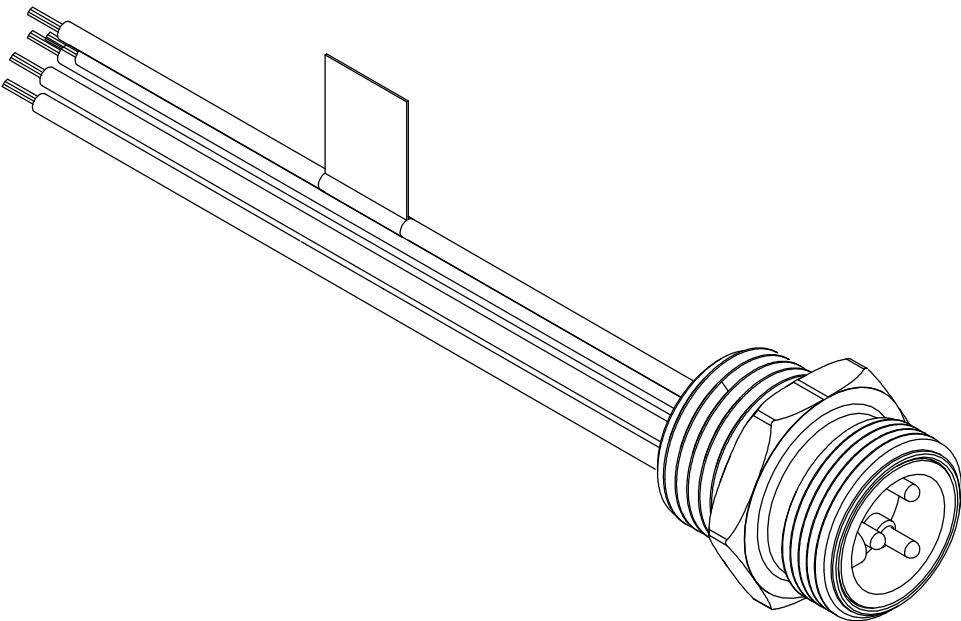
Tel: +86-755-8981 8866 Fax: +86-755-8427 6832

Email & Skype: info@chipsmall.com Web: www.chipsmall.com

Address: A1208, Overseas Decoration Building, #122 Zhenhua RD., Futian, Shenzhen, China

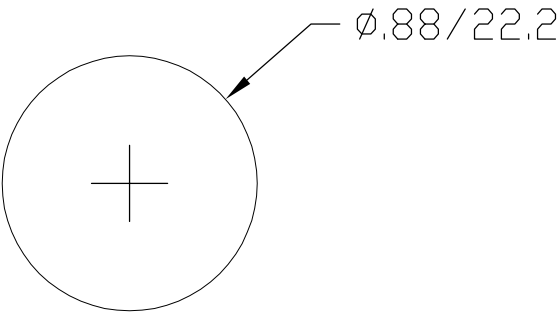


| MATERIAL NUMBER | OLD PART NUMBER | FINISHED LENGTH |
|-----------------|-----------------|---------------------------------|
| 130013-0488 | 1R3006A20A060 | 6.00" +.75" -0 [.2M +19.1 -0] |
| 130013-0489 | 1R3006A20A120 | 12.00" +1.75" -0 [.3M +44.5 -0] |
| 130013-0491 | 1R3006A20F030 | 3.00' +2.19" -0 [.9M +55.6 -0] |
| 130013-0492 | 1R3006A20F060 | 6.00' +3.50" -0 [1.8M +88.9 -0] |



| | |
|---|------------|
| 1 | RED-WHITE |
| 2 | RED |
| 3 | GREEN |
| 4 | RED-YELLOW |
| 5 | RED-BLACK |

WIRING DIAGRAM



KNOCKOUT HOLE

| | |
|-----------------------|--------------------------------|
| VOLTAGE RATING | 300 VAC/VDC |
| AMPERAGE RATING | 5.6 AMPS |
| PROTECTION | IP67 |
| OPERATING TEMPERATURE | -20°C TO 105°C |
| UL CERTIFICATIONS | ULRECOGNIZED, FILE NO. E152210 |
| CSA CERTIFICATIONS | CSA CERTIFIED, FILE NO. LR6837 |

| ITEM | COMPONENT | MATERIAL | FINISH |
|------|-----------------------------------------------------|---------------|--------------------|
| 1 | INSERT | PVC | YELLOW |
| 2 | CONTACT PIN | COPPER ALLOY | GOLD OVER NICKEL |
| 3 | RECEPTACLE SHELL | ZINC DIE CAST | BLACK E-COATED |
| 4 | CONDUCTOR - 18 AWG. 16 x #30 COPPER STRANDING, 300V | PVC | SEE WIRING DIAGRAM |
| 5 | FLAG LABEL | PLASTIC FILM | BLACK/YELLOW |

| | | | | | | | | | | | | |
|------------------------------------------------------------------------------------------------------------|--------------------|--------------------------------------------------|------------------------------------------------------------|-------|-------|---------------------------|-------------------------------------------------------------------------------------------------------------------------------|-----------------------------------------------------------------------------------------------------------------------|----------------------|----------------------------------------------------------|-------------------------------|---------------------|
| RLSD DRAWING EC NO: WNA2009-0645 DRWN: BWOODMAN 4/1/09 CHKD: JM APPR: JFMURPHY 2009/04/08 A | DESCRIPTION REV | QUALITY SYMBOL <div>▽=0</div> <div>▽C=0</div> | GENERAL TOLERANCES (UNLESS SPECIFIED) | | | DIMENSION STYLE IN/MM | | SCALE ---- | DESIGN UNITS ---- | <div><div></div><div></div></div> THIRD ANGLE PROJECTION | | |
| | | | | mm | INCH | DRAWN BY BW | DATE 2009/04/01 | TITLE MINI-CHANGE RECEPTACLE 5 POLE MALE 1/2 NPT AUTO COLOR CODE <div><div></div>MOLEX INCORPORATED</div> | | | | |
| | | | 4 PLACES | ±---- | ±---- | CHECKED BY LH | DATE 2009/04/01 | | | | | |
| | | | 3 PLACES | ±---- | ±---- | APPROVED BY | DATE | | | | | |
| | | | 2 PLACES | ±---- | ±.01 | ---- | ---- | | | | | |
| | | | 1 PLACE | ±0.3 | ±---- | MATERIAL NO. SEE CHART | | | | | DOCUMENT NO. SD-130013-004 | SHEET NO. 1 OF 1 |
| | | | ANGULAR ±----° | | | SIZE C | THIS DRAWING CONTAINS INFORMATION THAT IS PROPRIETARY TO MOLEX INCORPORATED AND SHOULD NOT BE USED WITHOUT WRITTEN PERMISSION | | | | | |
| | | | DRAFT WHERE APPLICABLE MUST REMAIN WITHIN DIMENSIONS | | | | | | | | | |