



Chipsmall Limited consists of a professional team with an average of over 10 year of expertise in the distribution of electronic components. Based in Hongkong, we have already established firm and mutual-benefit business relationships with customers from,Europe,America and south Asia,supplying obsolete and hard-to-find components to meet their specific needs.

With the principle of “Quality Parts,Customers Priority,Honest Operation,and Considerate Service”,our business mainly focus on the distribution of electronic components. Line cards we deal with include Microchip,ALPS,ROHM,Xilinx,Pulse,ON,Everlight and Freescale. Main products comprise IC,Modules,Potentiometer,IC Socket,Relay,Connector.Our parts cover such applications as commercial,industrial, and automotives areas.

We are looking forward to setting up business relationship with you and hope to provide you with the best service and solution. Let us make a better world for our industry!



Contact us

Tel: +86-755-8981 8866 Fax: +86-755-8427 6832

Email & Skype: info@chipsmall.com Web: www.chipsmall.com

Address: A1208, Overseas Decoration Building, #122 Zhenhua RD., Futian, Shenzhen, China



6

5

4

3

2

1

FACE VIEW-FEMALE INSERT

1-WHITE 2-BLACK	1-GREEN/YELLOW 2-BLACK 3-WHITE	1-BLACK 2-WHITE 3-RED 4-GREEN/YELLOW	1-WHITE 2-RED 3-GREEN/YELLOW 4-ORANGE 5-BLACK	1-WHITE 2-RED 3-GREEN/YELLOW 4-ORANGE 5-BLACK 6-BLUE

NOTES:

1. MATERIAL: SEE TABLE

2. FINISH: SEE TABLE

3. ELECTRICAL:

VOLTAGE: 2P THRU 6P 600V PER UL 2238

3P 400V PER IEC60664

4,5 & 6P 320V PER IEC60664

CURRENT: 2P & 3P: 13A

4P: 10A

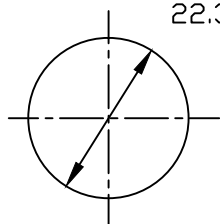
5P & 6P: 8A

4. TEMP RATING: -20°TO +105°C

5. PROTECTION: IP67 (WHEN MATED)

6. ALL DIMS ARE FOR REFERENCE

UNLESS NOTED OTHERWISE

Ø.88
22.3

REF. KNOCKOUT HOLE

PART NUMBER LEGEND

1R3004A20F020

POLES
2-6FINISHED LENGTH:
A120= 12 IN.
F020= 2 FEET
F100= 10 FEET

M005= 0.5 METER

M010= 1 METER

M100= 10 METER

TABLE

6	FLAG LABEL	VINYL	BLACK/YELLOW
5	POTTING MATERIAL	EPDXY	
4	WIRE, 16 AWG UL (1015)	PVC INSULATION	SEE CHART
3	CONTACT SOCKET	COPPER ALLOY	GOLD PLATED
2	FEMALE INSERT	PVC	YELLOW
1	RECEPTACLE SHELL	ZINC DIE-CAST	BLACK
ITEM	DESCRIPTION	MATERIAL	FINISH

REV'D NOTES: REMOVE SPAN, AD PIN LEG	EC NO: IPG2017-0559	DRWN: RSTONE	2016/12/05	CHKD: M ZIELIN	2016/12/12	APPR: BWOODMAN
REV	A					

QUALITY SYMBOLS
▽=0
▽C=0

GENERAL TOLERANCES
(UNLESS SPECIFIED)

	mm	INCH
4 PLACES	±---	±---
3 PLACES	±---	±---
2 PLACES	±---	±---
1 PLACE	±---	±---

ANGULAR ±1/2°

DRAFT WHERE APPLICABLE
MUST REMAIN
WITHIN DIMENSIONSDIMENSION STYLE
INCH/MM

DRAWN BY	DATE
RSTONE	2016/12/05
CHECKED BY	DATE
M ZIELIN	2016/12/12
APPROVED BY	DATE
---	---

MATERIAL NO.

--

SIZE
ATHIS DRAWING CONTAINS INFORMATION THAT IS PROPRIETARY TO MOLEX
INCORPORATED AND SHOULD NOT BE USED WITHOUT WRITTEN PERMISSIONSCALE
---DESIGN UNITS
INCHTHIRD ANGLE
PROJECTION

MINI-CHANGE RECEPTACLE
2-6P FEMALE
#16-1 PVC WIRES

MOLEX INCORPORATED

DOCUMENT NO.

SD-130013-121

SHEET NO.

1 OF 1

6

5

4

3

2

1