



Chipsmall Limited consists of a professional team with an average of over 10 year of expertise in the distribution of electronic components. Based in Hongkong, we have already established firm and mutual-benefit business relationships with customers from,Europe,America and south Asia,supplying obsolete and hard-to-find components to meet their specific needs.

With the principle of "Quality Parts,Customers Priority,Honest Operation,and Considerate Service",our business mainly focus on the distribution of electronic components. Line cards we deal with include Microchip,ALPS,ROHM,Xilinx,Pulse,ON,Everlight and Freescale. Main products comprise IC,Modules,Potentiometer,IC Socket,Relay,Connector.Our parts cover such applications as commercial,industrial, and automotives areas.

We are looking forward to setting up business relationship with you and hope to provide you with the best service and solution. Let us make a better world for our industry!



Contact us

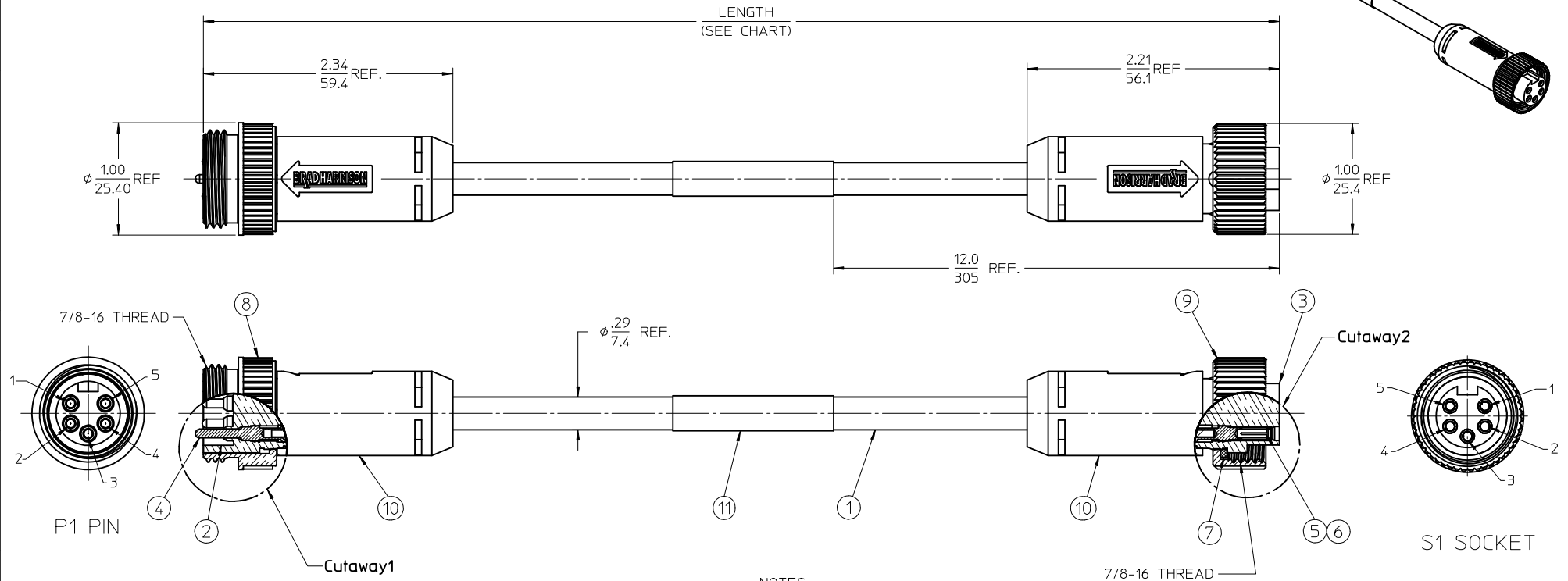
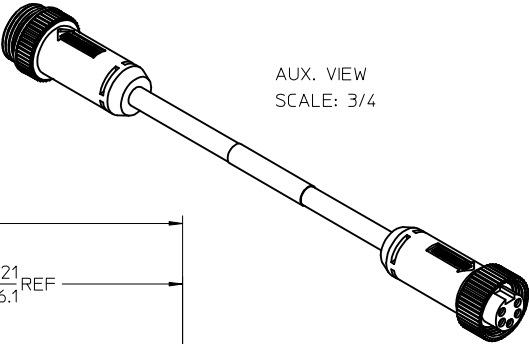
Tel: +86-755-8981 8866 Fax: +86-755-8427 6832

Email & Skype: info@chipsmall.com Web: www.chipsmall.com

Address: A1208, Overseas Decoration Building, #122 Zhenhua RD., Futian, Shenzhen, China



13	12	11	10	9	8	7	6	5	4	3	2	1
PART NUMBER	ENGINEERING NO.	LENGTH										
1300250287	DND11A-M010	3' 3" +2.19 - 0 [1.0M +55.6 - 0]										
1300250292	DND11A-M030	9' 10" +3.50 - 0 [3.0M +88.9 - 0]										
1300250295	DND11A-M050	16' 5" +6.50 - 0 [5.0M +165.1 - 0]										



- NOTES:
1. MATERIAL: SEE TABLE
 2. FINISHES: SEE TABLE
 3. CABLE ASSEMBLIES ARE BAGGED SEPERATELY IN POLY BAGS WITH BARCODE LABEL ATTACHED TO OUTSIDE OF BAG
 4. WRAP LABEL IS MARKED WITH P/N, DATE CODE VOLTAGE & AMPERAGE
 5. MATES WITH: MINI CHANGE, A-SIZE 5 POLE
 6. ELECTRICAL SPECIFICATIONS:
VOLTAGE RATING: 300V
CURRENT RATING: 4 AMPS
 7. ASSEMBLY IS RoHS COMPLIANT

P1		S2
1	DRAIN	1
2	RED +V	2
3	BLACK -V	3
4	WHITE CAN H	4
5	BLUE CAN L	5

WIRING DIAGRAM

11	1	LABEL	PLASTIC FILM	BLACK/YELLOW
10	2	OVERMOLD	PVC	GRAY
9	1	COUPLING NUT, FEMALE THREAD	ZINC DIE CAST	BLACK
8	1	COUPLING NUT, MALE THREAD	ZINC DIE CAST	BLACK
7	1	FRICTION RING	NYLON	WHITE
6	5	CONTACT SOCKET, 22 AWG	BRASS	GOLD PLATED
5	5	SOCKET SLEEVE	ST. STEEL	
4	5	CONTACT PIN, 22 AWG	BRASS	GOLD PLATED
3	1	INSERT, FEMALE, 5 POLE	PVC	GRAY
2	1	INSERT, MALE, 5 POLE	PVC	GRAY
1	1	CABLE - THIN-STD, DEV-NET, DROP, 4/22	PVC JACKET	GRAY
ITEM	QTY.	DESCRIPTION	MATERIAL	FINISH

RELEASED EC NO: WNA2010-0073 DRAWN BY: R.STONE CHKD BY: WOODMAN APPR: J.MURPHY REV A	2009/07/31 2009/08/10	DESCRIPTION	QUALITY SYMBOLS ▽=0 ▽=0	GENERAL TOLERANCES (UNLESS SPECIFIED)	mm		INCH		DIMENSION STYLE IN/MM		SCALE 1.5:1	DESIGN UNITS INCH	THIRD ANGLE PROJECTION	
					4 PLACES ± --- ± ---		R.STONE 2009/07/30		TITLE MINI-CHANGE 5 POLE M/F, DEVICE NET DROP CABLE - STD. THIN MOLEX INCORPORATED					
					3 PLACES ± --- ± ---		CHECKED BY DATE							
					2 PLACES ± --- ± ---		B.WOODMAN 2009/07/31							
					1 PLACE ± --- ± ---		APPROVED BY DATE							
					ANGULAR ±1/2°		J.MURPHY 2009/08/03		DOCUMENT NO. SD-130025-019					
DRAFT WHERE APPLICABLE MUST REMAIN WITHIN DIMENSIONS				MATERIAL NO.		SHEET NO. 1 OF 1								
				SEE CHART										
				SIZE C THIS DRAWING CONTAINS INFORMATION THAT IS PROPRIETARY TO MOLEX INCORPORATED AND SHOULD NOT BE USED WITHOUT WRITTEN PERMISSION										