



Chipsmall Limited consists of a professional team with an average of over 10 year of expertise in the distribution of electronic components. Based in Hongkong, we have already established firm and mutual-benefit business relationships with customers from,Europe,America and south Asia,supplying obsolete and hard-to-find components to meet their specific needs.

With the principle of “Quality Parts,Customers Priority,Honest Operation,and Considerate Service”,our business mainly focus on the distribution of electronic components. Line cards we deal with include Microchip,ALPS,ROHM,Xilinx,Pulse,ON,Everlight and Freescale. Main products comprise IC,Modules,Potentiometer,IC Socket,Relay,Connector.Our parts cover such applications as commercial,industrial, and automotives areas.

We are looking forward to setting up business relationship with you and hope to provide you with the best service and solution. Let us make a better world for our industry!



Contact us

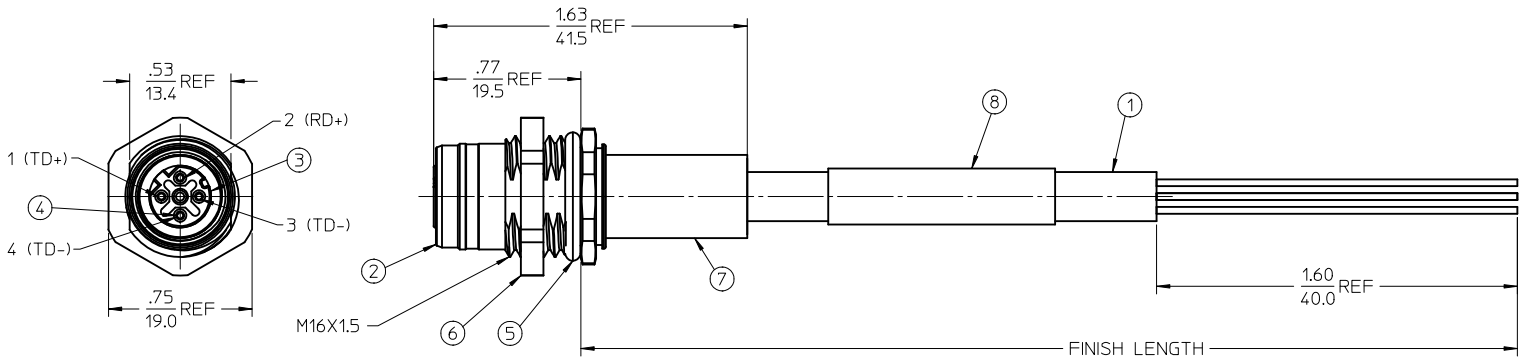
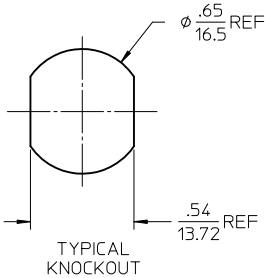
Tel: +86-755-8981 8866 Fax: +86-755-8427 6832

Email & Skype: info@chipsmall.com Web: www.chipsmall.com

Address: A1208, Overseas Decoration Building, #122 Zhenhua RD., Futian, Shenzhen, China



MATERIAL NUMBER	ENGINEERING NUMBER	FINISHED LENGTH
1300540012	ERWAAJ4002M002	7.87" +.75"-0 [2M +19.0-0]
1300540013	ERWAAJ4002M020	76.56" +3.50"-0 [2M +89.0-0]



WIRING CONNECTION

1	ORANGE
2	BLUE
3	ORANGE/WHITE
4	BLUE/WHITE

NOTES:

- 1) MATERIAL: SEE TABLE
2) FINISH:SEE TABLE
3) ELECTRICAL SPECIFICATIONS:
VOTAGE: 125V
CURRNT RATING: 1.5 AMPS
4) ENVIRONMENTAL:
TEMPERATURE RANGE: -25°C TO 75°C
IP67
5) ASSEMBLY IS RoHS COMPLIANT BY EXCEPTION

8	LABEL	MYLAR	BLACK/YELLOW
7	SLEEVE	BRASS	NICKEL PLATED
6	PANEL NUT	Cu ALLOY	NICKEL PLATED
5	O-RING	BUNA-N	BLACK
4	SOCKET CONTACT	Cu ALLOY	GOLD PLATED
3	INSERT 4P	NYLON	BLACK
2	RECEPT. SHELL	BRASS	NICKEL PLATED
1	CABLE	ETHERNET CAT 5e(PVC)	JACKET:TEAL
ITEM	COMPONENT	MATERIAL	FINISH

CREATE DOC	EC NO: WNA2010-0467
DRWN:BRUPERT	2010/01/29
CHKD:B. WOODMAN	2010/01/29
APPR:JF.MURPHY	2010/01/29
REV	DESCRIPTION
A	

QUALITY SYMBOLS
▽=0
▽=0

GENERAL TOLERANCES (UNLESS SPECIFIED)		
	mm	INCH
4 PLACES	± .005	± .0005
3 PLACES	± .005	± .0005
2 PLACES	± .005	± .0005
1 PLACE	± .005	± .0005
ANGULAR ± 1/2°		
DRAFT WHERE APPLICABLE MUST REMAIN WITHIN DIMENSIONS		

DIMENSION STYLE	
IN/MM	
DRAWN BY	DATE
BW	2009/07/27
CHECKED BY	DATE
VO	2009/07/28
APPROVED BY	DATE
JM	2009/07/28
MATERIAL NO.	SEE CHART
SIZE	C

SCALE 1:1	DESIGN UNITS INCH	THIRD ANGLE PROJECTION	
TITLE M12 D-CODE CORDSET RECEPTACLE			
MOLEX INCORPORATED			
DOCUMENT NO. SD-130054-001		SHEET NO. 1 OF 1	
THIS DRAWING CONTAINS INFORMATION THAT IS PROPRIETARY TO MOLEX INCORPORATED AND SHOULD NOT BE USED WITHOUT WRITTEN PERMISSION			