



Chipsmall Limited consists of a professional team with an average of over 10 year of expertise in the distribution of electronic components. Based in Hongkong, we have already established firm and mutual-benefit business relationships with customers from,Europe,America and south Asia,supplying obsolete and hard-to-find components to meet their specific needs.

With the principle of "Quality Parts,Customers Priority,Honest Operation,and Considerate Service",our business mainly focus on the distribution of electronic components. Line cards we deal with include Microchip,ALPS,ROHM,Xilinx,Pulse,ON,Everlight and Freescale. Main products comprise IC,Modules,Potentiometer,IC Socket,Relay,Connector.Our parts cover such applications as commercial,industrial, and automotives areas.

We are looking forward to setting up business relationship with you and hope to provide you with the best service and solution. Let us make a better world for our industry!



Contact us

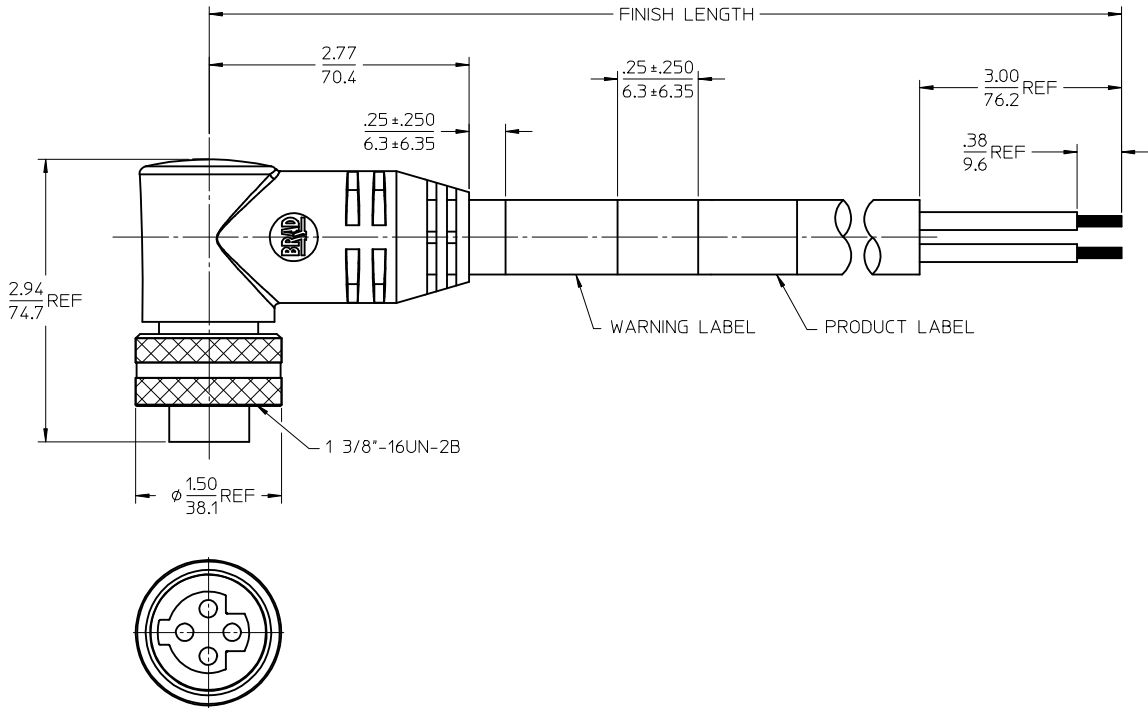
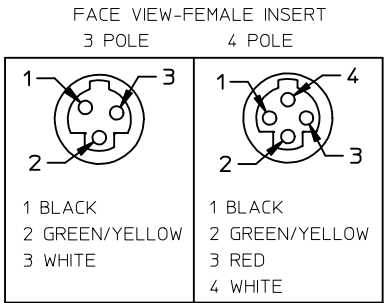
Tel: +86-755-8981 8866 Fax: +86-755-8427 6832

Email & Skype: info@chipsmall.com Web: www.chipsmall.com

Address: A1208, Overseas Decoration Building, #122 Zhenhua RD., Futian, Shenzhen, China



POLES	MATERIAL NO.	ENG. NO.	AMPS	LENGTH
3	1300630199	C03101A48M020	32	2M +89-0MM (6'7"+3.50-0)
4	1300630183	C04101A48M020	32	2M +89-0MM (6'7"+3.50-0)



SPECS:
 OVERMOLD: GRAY PVC
 INSERT: BLACK PVC
 COUPLING NUT: ANODIZED ALUMINUM
 CABLE: #10AWG GRAY PVC
 DUAL RATED UL TC/OPEN WIRING & ST00W
 ELECTRICAL: 600V AC/DC

UPDATED DRAWING EC NO: IPG2014-1095 DRWNG:GUSTAFSON 2015/09/02 CHKD:VOU 2015/11/12 APPR: JFMURPHY 2015/09/16	DESCRIPTION	QUALITY SYMBOLS ▽=0 ▽=0	GENERAL TOLERANCES (UNLESS SPECIFIED)		DIMENSION STYLE IN/MM		SCALE 1:2	DESIGN UNITS INCH	THIRD ANGLE PROJECTION			
				mm	INCH	DRAWN BY	DATE	TITLE QUICK CHANGE FEMALE 90 DEG, ALT KEY 3 & 4 POLE PORTABLES				
			4 PLACES ± ---	± ---	B.RUPERT	01/12/2010						
			3 PLACES ± ---	± .005	CHECKED BY	DATE	MOLEX INCORPORATED					
			2 PLACES ± 0.13	± .010	B.WOODMAN	01/12/2010						
			1 PLACE ± 0.25	± .020	APPROVED BY	DATE	SD-130063-199					
			ANGULAR ±1/2°		JFMURPHY	2010/01/15						
			DRAFT WHERE APPLICABLE MUST REMAIN WITHIN DIMENSIONS		MATERIAL NO.		DOCUMENT NO.		SHEET NO.			
					SEE CHART				1 OF 1			
					SIZE							
	REV		THIS DRAWING CONTAINS INFORMATION THAT IS PROPRIETARY TO MOLEX INCORPORATED AND SHOULD NOT BE USED WITHOUT WRITTEN PERMISSION									