



Chipsmall Limited consists of a professional team with an average of over 10 year of expertise in the distribution of electronic components. Based in Hongkong, we have already established firm and mutual-benefit business relationships with customers from,Europe,America and south Asia,supplying obsolete and hard-to-find components to meet their specific needs.

With the principle of “Quality Parts,Customers Priority,Honest Operation,and Considerate Service”,our business mainly focus on the distribution of electronic components. Line cards we deal with include Microchip,ALPS,ROHM,Xilinx,Pulse,ON,Everlight and Freescale. Main products comprise IC,Modules,Potentiometer,IC Socket,Relay,Connector.Our parts cover such applications as commercial,industrial, and automotives areas.

We are looking forward to setting up business relationship with you and hope to provide you with the best service and solution. Let us make a better world for our industry!



## Contact us

Tel: +86-755-8981 8866 Fax: +86-755-8427 6832

Email & Skype: [info@chipsmall.com](mailto:info@chipsmall.com) Web: [www.chipsmall.com](http://www.chipsmall.com)

Address: A1208, Overseas Decoration Building, #122 Zhenhua RD., Futian, Shenzhen, China



6

5

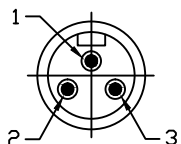
4

3

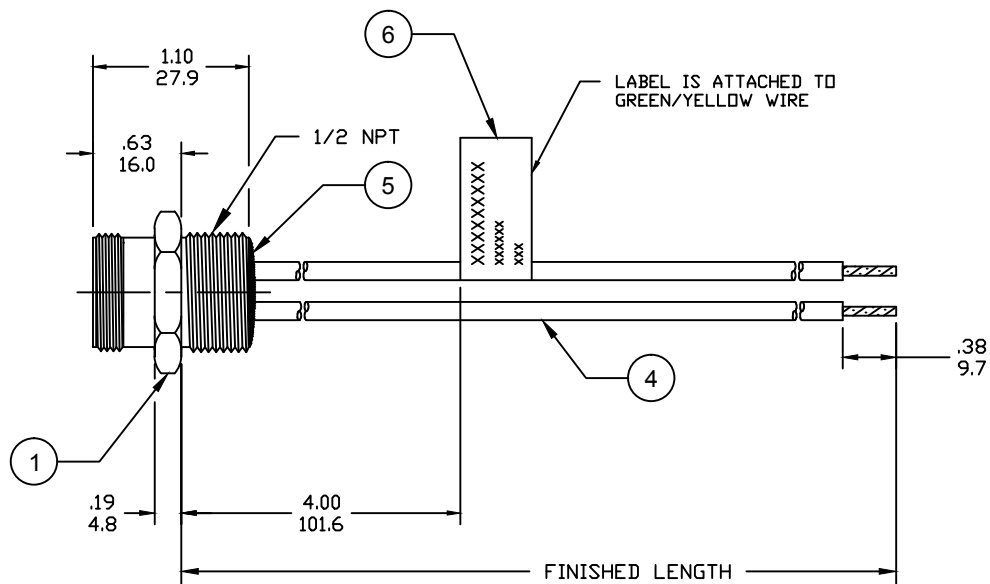
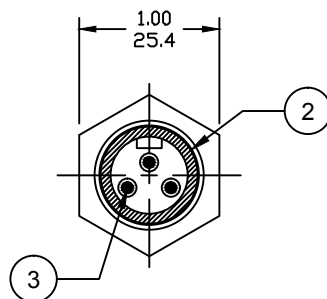
2

1

## FRONT VIEW - MALE INSERT



1-GREEN/YELLOW  
2-BLACK  
3-WHITE



## NOTES:

1. MATERIAL: AS NOTED

2. FINISH: AS NOTED

3. ELECTRICAL:

VOLTAGE: 400V PER IEC60664

600V PER UL2237

CURRENT: 15A

4. TEMP RATING: -20°TO +90°C

5. PROTECTION: IP67 (WHEN MATED)

6. COUPLING THREAD: 7/8-16UN

7. ALL DIMS ARE FOR REFERENCE  
UNLESS NOTED OTHERWISE

## PART NUMBER LEGEND

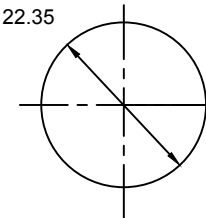
1R3006A28M005G

FINISHED LENGTH:

M005= 0.5 METER

M010= 1 METER

M100= 10 METER

Ø.880  
22.35

REF. KNOCKOUT HOLE

A

6	FLAG LABEL	VINYL	BLACK/YELLOW
5	POTTING MATERIAL	EPDXY	
4	WIRE, 14 AWG (THHN)	PVC INSULATION	SEE FACE VIEW
3	CONTACT PIN	COPPER ALLOY	GOLD PLATED
2	MALE INSERT	PVC	BLACK
1	RECEPTACLE SHELL	ZINC DIE-CAST	BLACK
ITEM	DESCRIPTION	MATERIAL	FINISH

RELEASED  
EC NO: IPG2017-0655  
DRWN: RSTONE 2017/01/11  
CHKD: M ZIELIN 2017/01/26  
APPR: BWOODMAN 2017/01/26

QUALITY  
SYMBOLS  
▽=0  
▽C=0

GENERAL TOLERANCES  
(UNLESS SPECIFIED)

	mm	INCH
4 PLACES	±---	±---
3 PLACES	±---	±---
2 PLACES	±---	±---
1 PLACE	±---	±---

ANGULAR ±---°

DRAFT WHERE APPLICABLE  
MUST REMAIN  
WITHIN DIMENSIONS

DIMENSION STYLE  
INCH/MM

DRAWN BY	DATE
RSTONE	2017/01/11
CHECKED BY	DATE
M ZIELIN	2017/01/26
APPROVED BY	DATE
BWOODMAN	2017/01/26
MATERIAL NO.	---

SCALE  
---DESIGN UNITS  
INCH

THIRD ANGLE  
PROJECTION

TITLE  
MINI-CHANGE RECEPTACLE  
MALE, 3P, 14 AWG  
1/2 NPT, AC COLOR

MOLEX INCORPORATED

DOCUMENT NO.

SD-130066-079

SHEET NO.

1 OF 1

SIZE  
A

THIS DRAWING CONTAINS INFORMATION THAT IS PROPRIETARY TO MOLEX  
INCORPORATED AND SHOULD NOT BE USED WITHOUT WRITTEN PERMISSION

6

5

4

3

2

1