



Chipsmall Limited consists of a professional team with an average of over 10 year of expertise in the distribution of electronic components. Based in Hongkong, we have already established firm and mutual-benefit business relationships with customers from,Europe,America and south Asia,supplying obsolete and hard-to-find components to meet their specific needs.

With the principle of "Quality Parts,Customers Priority,Honest Operation,and Considerate Service",our business mainly focus on the distribution of electronic components. Line cards we deal with include Microchip,ALPS,ROHM,Xilinx,Pulse,ON,Everlight and Freescale. Main products comprise IC,Modules,Potentiometer,IC Socket,Relay,Connector.Our parts cover such applications as commercial,industrial, and automotives areas.

We are looking forward to setting up business relationship with you and hope to provide you with the best service and solution. Let us make a better world for our industry!



Contact us

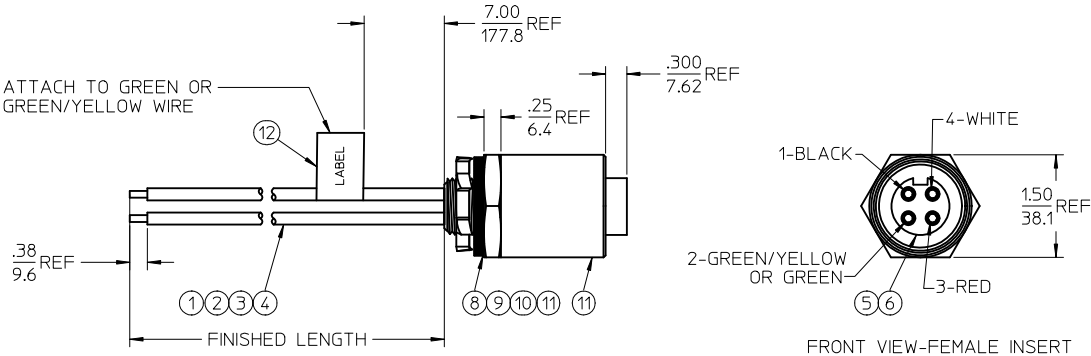
Tel: +86-755-8981 8866 Fax: +86-755-8427 6832

Email & Skype: info@chipsmall.com Web: www.chipsmall.com

Address: A1208, Overseas Decoration Building, #122 Zhenhua RD., Futian, Shenzhen, China



MATERIAL NO.	ENGINEERING NO.	FINISHED LENGTH
1300660237	CR4000A30M750	75 METERS
1300660165	CR4000A30M070	7 METERS
1300660164	CR4000A30M060	6 METERS
1300660163	CR4000A30M050	5 METERS
1300660162	CR4000A30M030	3 METERS
1300660160	CR4000A30M020	2 METERS
1300660159	CR4000A30M017	1.7 METERS
1300660158	CR4000A30M016	1.6 METERS
1300660157	CR4000A30M013	1.3 METERS
1300660156	CR4000A30M011	1.1 METERS
1300660154	CR4000A30M010	1 METERS
1300660153	CR4000A30M009	0.9 METERS
1300660152	CR4000A30M005	0.5 METERS
1300660150	CR4000A30M003	0.3 METERS
1300660149	CR4000A30A120	12 INCHES
1300662008	CR4000A30M040	4 METERS



- NOTES:
1. MATERIAL: SEE TABLE
 2. FINISHES: SEE TABLE
 3. ELECTRICAL SPECIFICATIONS: 600 VOLTS 25 AMPS
 4. FLAG LABEL LOCATED ON GREEN/YELLOW WIRE
 5. ASSEMBLY IS ROHS COMPLIANT
 6. ASSEMBLY IS UL LISTED PER SUB 2237, CATEGORY PVVA, E258922

CUSTOMER PRODUCTION APPROVAL
 APPROVED BY: _____
 DATE: _____
 MUST BE SIGNED AND RETURNED BEFORE
 PRODUCTION WILL BEGIN.

12	1	FLAG LABEL	VINYL	YELLOW
11	1	LOCK NUT	STEEL	ZINC PLATED
10	1	GASKET	NEOPRENE	BLACK
9	A/R	EPOXY HARDENER		BLACK
8	A/R	EPOXY RESIN		BLACK
7	1	RECEPTACLE SHELL	ALUMINUM ALLOY	ANODIZED
6	1	FEMALE INSERT	PVC	BLACK
5	4	SOCKET CONTACT	COPPER	GOLD PLATED
4	SEE TABLE	#10-1 WIRE THN	PVC JACKET	RED
3	SEE TABLE	#10-1 WIRE THN	PVC JACKET	GREEN OR GRN/YEL
2	SEE TABLE	#10-1 WIRE THN	PVC JACKET	WHITE
1	SEE TABLE	#10-1 WIRE THN	PVC JACKET	BLACK
ITEM	QTY	DESCRIPTION	MATERIAL	FINISH

UPDATE NOTES EC NO: WNA2011-0552 DRWN: BRUPERT 2011/11/14 CHKD: APPR: JFMURPHY 2012/03/20		QUALITY SYMBOLS ▽=0 ▽=0	GENERAL TOLERANCES (UNLESS SPECIFIED)		DIMENSION STYLE IN/MM		SCALE	DESIGN UNITS INCH	THIRD ANGLE PROJECTION			
					DRAWN BY BRUPERT		DATE 2011/11/14	TITLE QC FEM 1/2" NPT S 4 POLE AC RECEPTACLE				
					CHECKED BY		DATE					
					APPROVED BY JFMURPHY		DATE 2012/03/20	MOLEX INCORPORATED				
			ANGULAR ±1/2°		MATERIAL NO.		DOCUMENT NO.					
			DRAFT WHERE APPLICABLE MUST REMAIN WITHIN DIMENSIONS		SEE CHART		SD-130066-025					
					SIZE C		THIS DRAWING CONTAINS INFORMATION THAT IS PROPRIETARY TO MOLEX INCORPORATED AND SHOULD NOT BE USED WITHOUT WRITTEN PERMISSION					
REV						SHEET NO. 1 OF 1						