



Chipsmall Limited consists of a professional team with an average of over 10 year of expertise in the distribution of electronic components. Based in Hongkong, we have already established firm and mutual-benefit business relationships with customers from,Europe,America and south Asia,supplying obsolete and hard-to-find components to meet their specific needs.

With the principle of "Quality Parts,Customers Priority,Honest Operation,and Considerate Service",our business mainly focus on the distribution of electronic components. Line cards we deal with include Microchip,ALPS,ROHM,Xilinx,Pulse,ON,Everlight and Freescale. Main products comprise IC,Modules,Potentiometer,IC Socket,Relay,Connector.Our parts cover such applications as commercial,industrial, and automotives areas.

We are looking forward to setting up business relationship with you and hope to provide you with the best service and solution. Let us make a better world for our industry!



Contact us

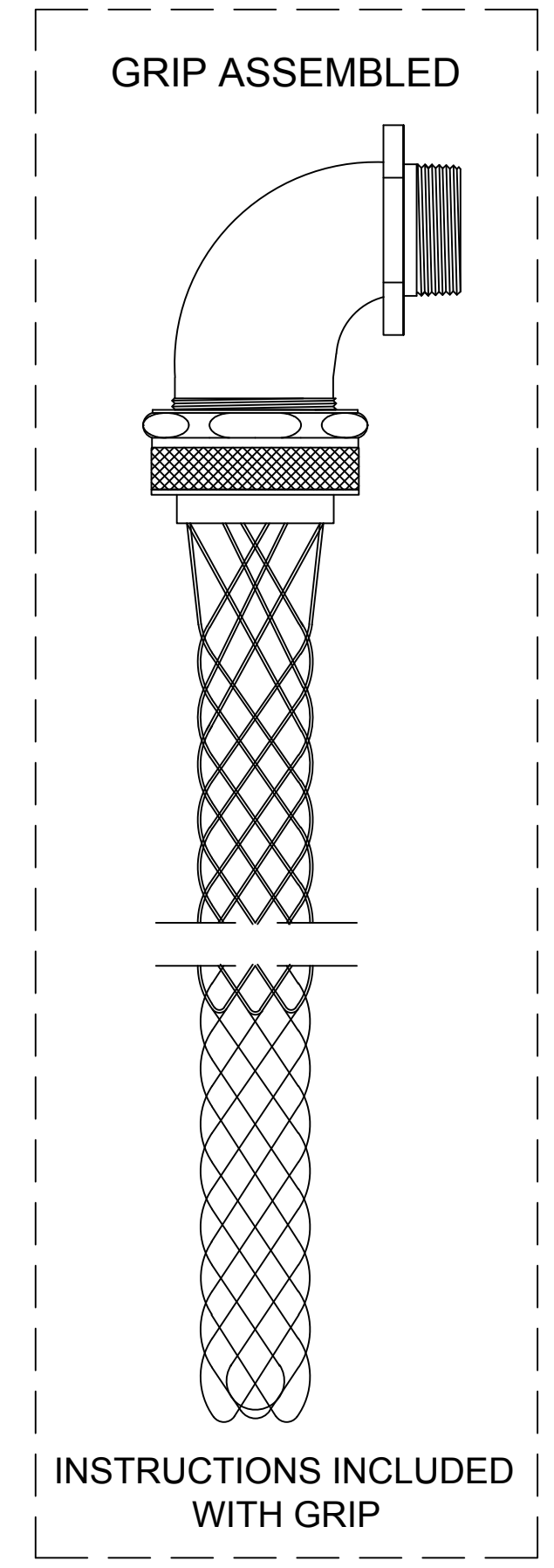
Tel: +86-755-8981 8866 Fax: +86-755-8427 6832

Email & Skype: info@chipsmall.com Web: www.chipsmall.com

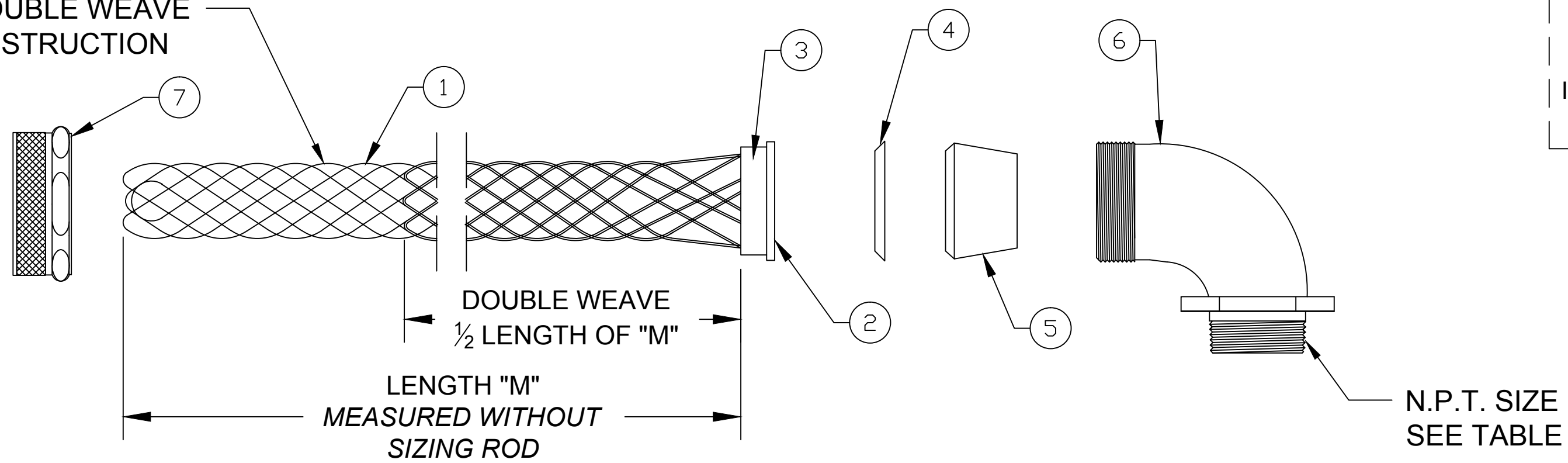
Address: A1208, Overseas Decoration Building, #122 Zhenhua RD., Futian, Shenzhen, China



CATALOG NUMBER	MATERIAL NUMBER	CABLE RANGE	LENGTH "M"	N.P.T. FITTING SIZE	FORM SIZE	UL LISTED	CSA APPROVED	PRODUCT SELECTION NUMBER
36831	1300970297	.750-.875 / 19.05-22.23	9.500±1.000 / 241.30±25.40	1-1/4	5	---	☑	PG1014-90
36361	1300970221	.875-1.000 / 22.23-25.40	8.625±1.000 / 219.08±25.40			☑	☑	PG1016-90
36362	1300970222	1.000-1.125 / 25.40-28.58	9.000±1.000 / 228.60±25.40			☑	☑	PG1018-90
36363	1300970223	1.125-1.250 / 28.58-31.75	10.000±1.000 / 254.00±25.40			☑	☑	PG1020-90
36364	1300970224	1.250-1.375 / 31.75-34.925	12.000±1.000 / 304.80±25.40			☑	☑	PG1022-90
36469	-----	.750-.875 / 19.05-22.23	9.500±1.000 / 241.30±25.40	1-1/2	5	---	☑	PG1214-90
36470	1300970231	.875-1.000 / 22.23-25.40	8.625±1.000 / 219.08±25.40			☑	☑	PG1216-90
36471	1300970232	1.000-1.125 / 25.40-28.58	9.000±1.000 / 228.60±25.40			☑	☑	PG1218-90
36472	1300970233	1.125-1.250 / 28.58-31.75	10.000±1.000 / 254.00±25.40			☑	☑	PG1220-90
36473	1300970234	1.250-1.375 / 31.75-34.925	12.000±1.000 / 304.80±25.40			☑	☑	PG1222-90
36834	-----	1.250-1.375 / 31.75-34.925	12.000±1.000 / 304.80±25.40	2	6	---	☑	PG1622-90
36835	-----	1.312-1.437 / 33.32-36.50	12.000±1.000 / 304.80±25.40			---	☑	PG1624-90
36497	1300970252	1.437-1.562 / 36.50-39.67	13.125±1.000 / 333.38±25.40			---	☑	PG1625-90
36498	1300970253	1.562-1.687 / 39.67-42.85	15.750±1.500 / 398.78±38.10			---	☑	PG1626-90
36499	1300970254	1.687-1.812 / 42.85-46.02	16.250±1.500 / 412.75±38.10			---	☑	PG1628-90
36500	1300970255	1.750-1.875 / 44.45-47.63	16.250±1.500 / 412.75±38.10			---	☑	PG1630-90



SINGLE/DOUBLE WEAVE MESH CONSTRUCTION



ITEM	DESCRIPTION	MATERIAL
1	WIRE MESH	STAINLESS STEEL
2	INNER RING	ALUMINUM
3	OUTER RING	ALUMINUM
4	FRICTION RING	ZINC PLATED STEEL
5	GROMMET	RUBBER
6	THREADED BODY	ALUMINUM
7	COMPRESSION NUT	ALUMINUM

RELEASE SALES DRAWING EC NO.: IFCG2014-2037 DRWN: HRUIZ01 2014/10/16 CHKD: HKNEELAN 2014/10/16 APPR: JFMURPHY 2016/05/04	DESCRIPTION REV A	QUALITY SYMBOL	GENERAL TOLERANCES (UNLESS SPECIFIED)	DIMENSION STYLE INCH/MM	SCALE NTS	DESIGN UNITS INCH	THIRD ANGLE PROJECTION
		$\nabla=0$ $\sphericalangle=0$	4 PLACES ±--- ±--- 3 PLACES ±--- ±.005 2 PLACES ±.13 ±.010 1 PLACE ±.25 ±.020	DRAWN BY DATE HRUIZ01 2014/10/16 CHECKED BY DATE HKNEELAN 2014/10/16 APPROVED BY DATE JFMURPHY 2016/05/04	TITLE	STRAIN RELIEF DELUXE 90 DEGREE MALE 1-1/4" TO 2" N.P.T.	
		DRAFT WHERE APPLICABLE MUST REMAIN WITHIN DIMENSIONS	ANGULAR ±1/2°	MATERIAL NO. SEE TABLE	MOLEX INCORPORATED DOCUMENT NO. SD-130097-109	SHEET NO. 1 OF 1	
		THIS DRAWING CONTAINS INFORMATION THAT IS PROPRIETARY TO MOLEX INCORPORATED AND SHOULD NOT BE USED WITHOUT WRITTEN PERMISSION					