



Chipsmall Limited consists of a professional team with an average of over 10 year of expertise in the distribution of electronic components. Based in Hongkong, we have already established firm and mutual-benefit business relationships with customers from,Europe,America and south Asia,supplying obsolete and hard-to-find components to meet their specific needs.

With the principle of “Quality Parts,Customers Priority,Honest Operation,and Considerate Service”,our business mainly focus on the distribution of electronic components. Line cards we deal with include Microchip,ALPS,ROHM,Xilinx,Pulse,ON,Everlight and Freescale. Main products comprise IC,Modules,Potentiometer,IC Socket,Relay,Connector.Our parts cover such applications as commercial,industrial, and automotives areas.

We are looking forward to setting up business relationship with you and hope to provide you with the best service and solution. Let us make a better world for our industry!



## Contact us

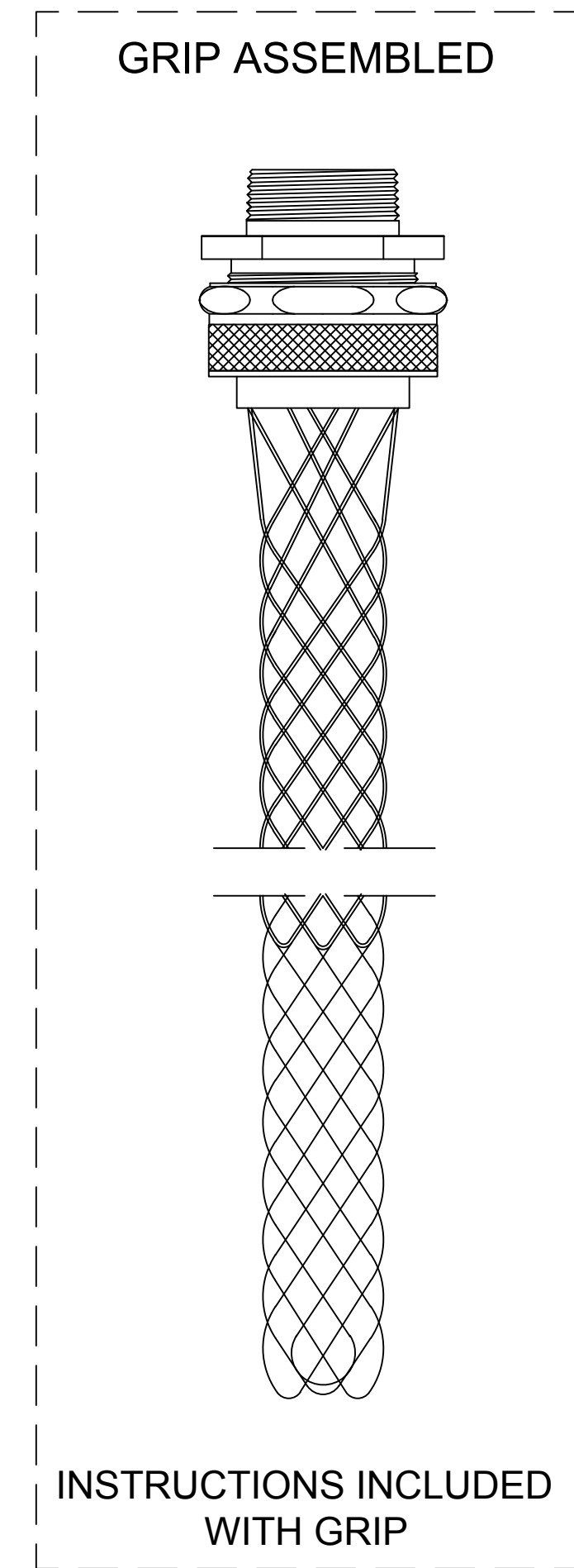
Tel: +86-755-8981 8866 Fax: +86-755-8427 6832

Email & Skype: info@chipsmall.com Web: www.chipsmall.com

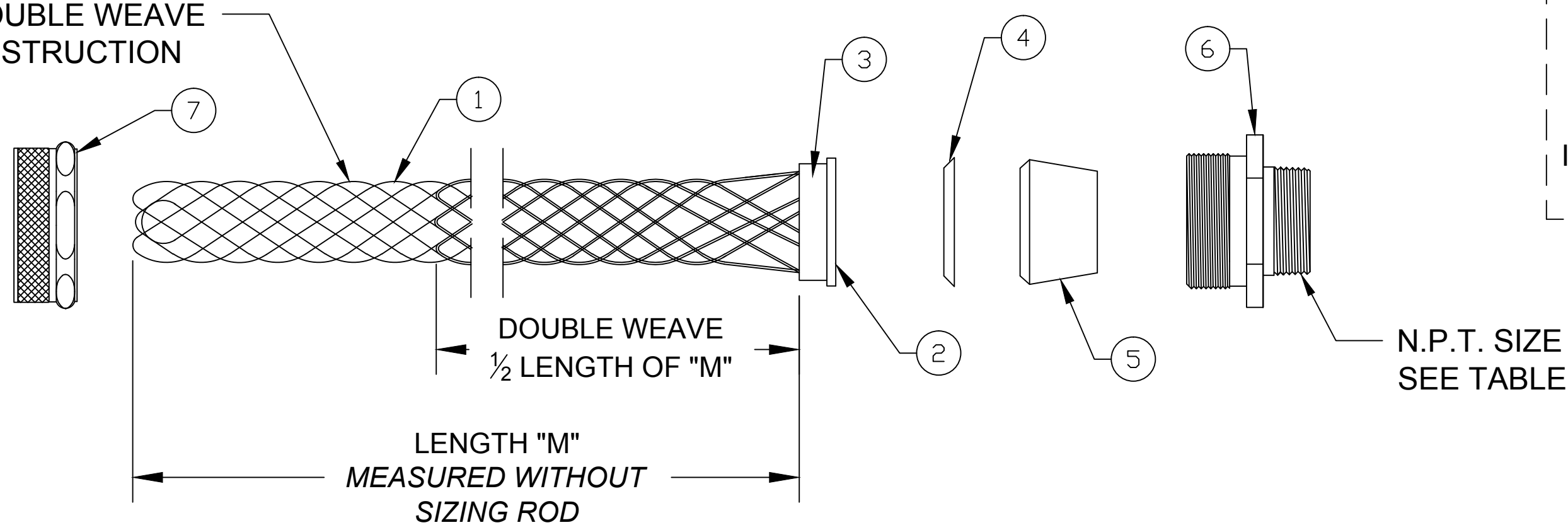
Address: A1208, Overseas Decoration Building, #122 Zhenhua RD., Futian, Shenzhen, China



CATALOG NUMBER	MATERIAL NUMBER	CABLE RANGE	LENGTH "M"	N.P.T. FITTING SIZE	FORM SIZE	UL LISTED	CSA APPROVED	PRODUCT SELECTION NUMBER
36800	1300970276	1.688-1.812 / 42.88-46.02	16.000±1.500 / 406.40±38.10	2 1/2	7	---	☑	PG2029
36801	1300970277	1.812-1.937 / 46.02-49.20	16.250±1.500 / 412.75±38.10			---	☑	PG2031
36802	1300970278	1.937-2.062 / 49.20-52.37	16.250±1.500 / 412.75±38.10			---	☑	PG2033
36803	1300970279	2.062-2.187 / 52.37-55.55	17.500±1.500 / 444.50±38.10			---	☑	PG2035
36804	1300970280	2.187-2.312 / 55.55-58.72	17.500±1.500 / 444.50±38.10			---	☑	PG2037
36805	1300970281	2.312-2.437 / 58.72-61.90	17.500±1.500 / 444.50±38.10			---	☑	PG2039
36806	1300970282	1.688-1.812 / 42.88-46.02	16.000±1.500 / 406.40±38.10	3	7	---	☑	PG2429
36807	1300970283	1.812-1.937 / 46.02-49.20	16.250±1.500 / 412.75±38.10			---	☑	PG2431
36808	1300970284	1.937-2.062 / 49.20-52.37	16.250±1.500 / 412.75±38.10			---	☑	PG2433
36809	1300970285	2.062-2.187 / 52.37-55.55	17.500±1.500 / 444.50±38.10			---	☑	PG2435
36810	1300970286	2.187-2.312 / 55.55-58.72	17.500±1.500 / 444.50±38.10			---	☑	PG2437
36811	1300970287	2.312-2.437 / 58.72-61.90	17.500±1.500 / 444.50±38.10		---	☑	PG2439	
36812	1300970288	2.437-2.625 / 61.90-66.68	15.750±1.500 / 398.78±38.10		8	---	☑	PG2442
36813	1300970289	2.625-2.812 / 66.68-71.42	17.500±1.500 / 444.50±38.10			---	☑	PG2445
36814	1300970290	2.812-3.000 / 71.42-76.20	17.500±1.500 / 444.50±38.10			---	☑	PG2448
36815	1300970291	3.000-3.250 / 76.20-82.55	19.000±1.500 / 482.60±38.10			---	☑	PG2452



SINGLE/DOUBLE WEAVE MESH CONSTRUCTION



ITEM	DESCRIPTION	MATERIAL
1	WIRE MESH	STAINLESS STEEL
2	INNER RING	ALUMINUM
3	OUTER RING	ALUMINUM
4	FRICTION RING	ZINC PLATED STEEL
5	GROMMET	RUBBER
6	THREADED BODY	ALUMINUM
7	COMPRESSION NUT	ALUMINUM

RELEASE SALES DRAWING EC NO.: ICG2014-2037 DRWN: HRUIZ01 2014/10/20 CH'KD: HKNEELAN 2014/10/13 APPR: JFMURPHY 2016/05/04	QUALITY SYMBOL	GENERAL TOLERANCES (UNLESS SPECIFIED)	DIMENSION STYLE INCH/MM	SCALE NTS	DESIGN UNITS INCH	THIRD ANGLE PROJECTION
	▽=0 ∇=0	4 PLACES ±--- ±---	mm INCH	HRUIZ01 2014/10/20	TITLE	STRAIN RELIEF DELUXE STRAIGHT MALE 2-1/2" TO 3" N.P.T.
		3 PLACES ±--- ±.005		CHECKED BY DATE		
		2 PLACES ±.13 ±.010	1 PLACE ±.25 ±.020	JFMURPHY 2016/05/04	APPROVED BY DATE	MOLEX INCORPORATED
	ANGULAR ±1/2°		MATERIAL NO. SEE TABLE	DOCUMENT NO. SD-130097-105		
	DRAFT WHERE APPLICABLE MUST REMAIN WITHIN DIMENSIONS		SIZE C	THIS DRAWING CONTAINS INFORMATION THAT IS PROPRIETARY TO MOLEX INCORPORATED AND SHOULD NOT BE USED WITHOUT WRITTEN PERMISSION		