



Chipsmall Limited consists of a professional team with an average of over 10 year of expertise in the distribution of electronic components. Based in Hongkong, we have already established firm and mutual-benefit business relationships with customers from,Europe,America and south Asia,supplying obsolete and hard-to-find components to meet their specific needs.

With the principle of “Quality Parts,Customers Priority,Honest Operation,and Considerate Service”,our business mainly focus on the distribution of electronic components. Line cards we deal with include Microchip,ALPS,ROHM,Xilinx,Pulse,ON,Everlight and Freescale. Main products comprise IC,Modules,Potentiometer,IC Socket,Relay,Connector.Our parts cover such applications as commercial,industrial, and automotives areas.

We are looking forward to setting up business relationship with you and hope to provide you with the best service and solution. Let us make a better world for our industry!



Contact us

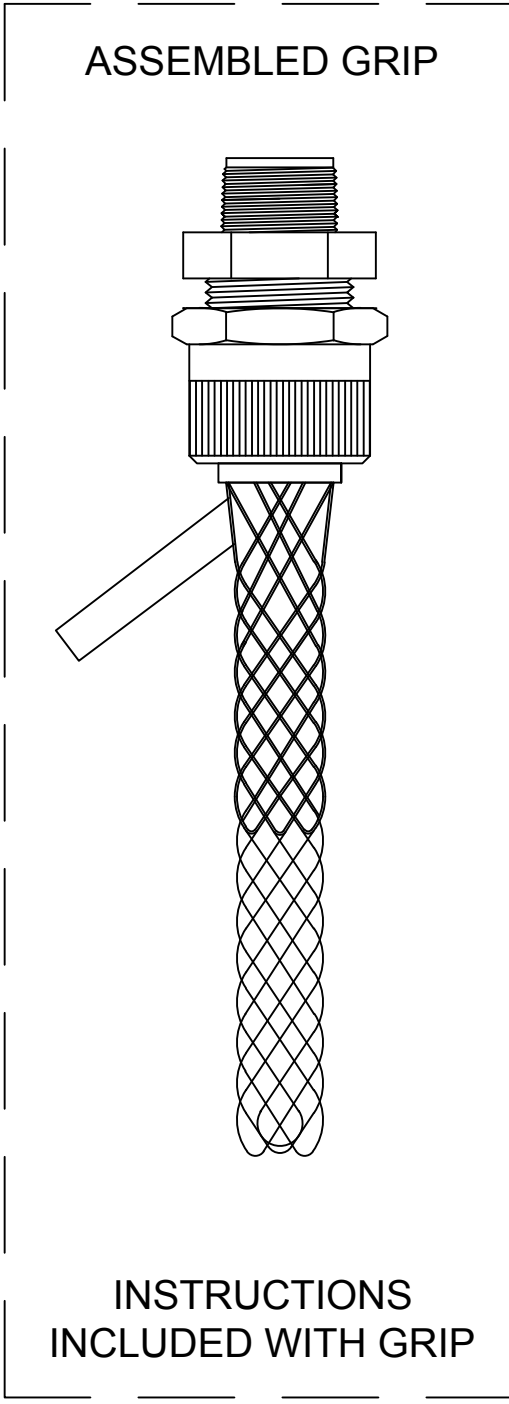
Tel: +86-755-8981 8866 Fax: +86-755-8427 6832

Email & Skype: info@chipsmall.com Web: www.chipsmall.com

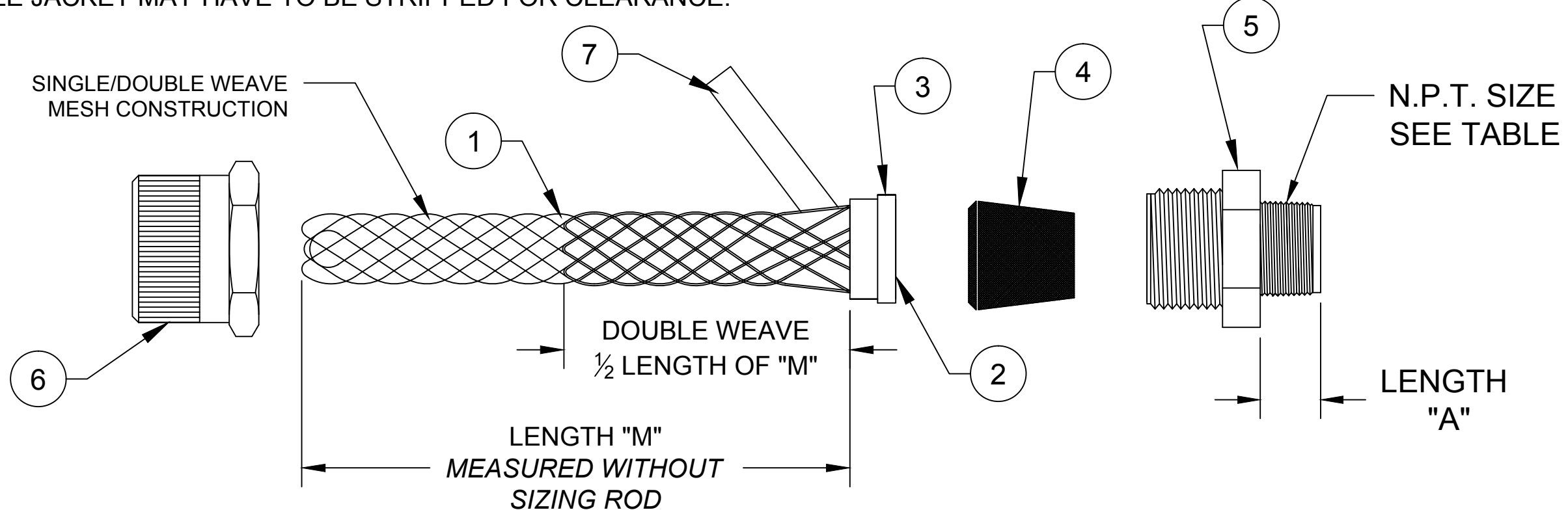
Address: A1208, Overseas Decoration Building, #122 Zhenhua RD., Futian, Shenzhen, China



CATALOG NUMBER	MATERIAL NUMBER	CABLE RANGE	LENGTH "M"	N.P.T. FITTING SIZE	FORM SIZE	LENGTH "A" REF.	UL LISTED	CSA APPROVED
5522MSS	1300970321	.187-.250 / 4.75-6.35	4.50±0.50 / 114.3±12.7	1/2	2	0.500 / 12.70	NO	NO
5524MSS	1300970322	.250-.312 / 6.35-7.92	4.50±0.50 / 114.3±12.7					
5526MSS	1300970323	.312-.375 / 7.92-9.53	4.50±0.50 / 114.3±12.7					
5528MSS	1300970324	.375-.437 / 9.53-11.10	5.50±0.50 / 139.7±12.7					
5530MSS	1300970325	.437-.500 / 11.10-12.70	6.50±0.50 / 165.1±12.7					
* 5532MSS	1300970326	.500-.562 / 12.70-14.27	6.75±0.50 / 171.5±12.7					
* 5534MSS	1300970328	.562-.625 / 14.27-15.88	6.75±0.50 / 171.5±12.7					
5620MSS	1300970339	.187-.250 / 4.75-6.35	4.25±0.50 / 108.0±12.7	3/4	3	0.562 / 14.27	NO	NO
5622MSS	1300970340	.250-.375 / 6.35-9.53	4.25±0.50 / 108.0±12.7					
5624MSS	1300970341	.375-.437 / 9.53-11.10	6.00±0.50 / 152.4±12.7					
5536MSS	1300970329	.437-.562 / 11.10-14.27	6.00±0.50 / 152.4±12.7					
5538MSS	1300970330	.500-.625 / 12.70-15.88	6.75±0.50 / 171.5±12.7					
5540MSS	1300970331	.562-.687 / 14.27-17.45	9.00±1.00 / 228.6±25.4					
* 5542MSS	1300970332	.625-.750 / 15.88-19.05	9.00±1.00 / 228.6±25.4					
5544MSS	1300970333	.687-.812 / 17.45-20.62	9.50±1.00 / 241.3±25.4	1	4	0.687 / 17.45	NO	NO
5546MSS	1300970630	.437-.562 / 11.10-14.27	6.00±0.50 / 152.4±12.7					
5548MSS	1300970334	.500-.625 / 12.70-15.88	6.75±0.50 / 171.5±12.7					
5550MSS	1300970631	.562-.687 / 14.27-17.45	9.00±1.00 / 228.6±25.4					
5552MSS	1300970335	.625-.750 / 15.88-19.05	9.00±1.00 / 228.6±25.4					
5554MSS	1300970336	.687-.812 / 17.45-20.62	9.50±1.00 / 241.3±25.4					
5556MSS	1300970337	.750-.875 / 19.05-22.23	9.50±1.00 / 241.3±25.4					
5558MSS	1300970632	.812-.937 / 20.62-23.80	8.75±1.00 / 222.3±25.4					
5560MSS	1300970338	.875-1.000 / 22.23-25.40	8.75±1.00 / 222.3±25.4					
5562MSS	1300970333	1.000-1.100 / 25.40-27.94	8.75±1.00 / 222.3±25.4					



* CABLE JACKET MAY HAVE TO BE STRIPPED FOR CLEARANCE.



ITEM	DESCRIPTION	MATERIAL
1	WIRE MESH	STAINLESS STEEL
2	INNER RING	STAINLESS STEEL
3	OUTER RING	STAINLESS STEEL
4	GROMMET	NITRILE PVC
5	THREADED BODY	STAINLESS STEEL
6	COMPRESSION NUT	STAINLESS STEEL
7	LABEL	MYLAR

RELEASE SALES DRAWING
 EC NO.: IFC2014-2088
 DRWN: HRUIZ01 2014/09/29
 CH'KD: HKNEELAN 2014/09/29
 APPR: JFMURPHY 2014/11/18

QUALITY SYMBOL
 ▽=0
 ▽C=0

DESCRIPTION
 A

GENERAL TOLERANCES (UNLESS SPECIFIED)

	mm	INCH
4 PLACES	±---	±---
3 PLACES	±---	±.005
2 PLACES	±.13	±.010
1 PLACE	±.25	±.020

ANGULAR ±1/2°

DRAFT WHERE APPLICABLE MUST REMAIN WITHIN DIMENSIONS

DIMENSION STYLE INCH/MM

DRAWN BY	DATE
HRUIZ01	2014/09/29
CHKD: HKNEELAN	2014/09/29
APPROVED BY	DATE
JFMURPHY	2014/11/18

MATERIAL NO. SEE TABLE

SIZE C

SCALE NTS

DESIGN UNITS INCH

THIRD ANGLE PROJECTION

TITLE
**STRAIN RELIEF
 MAX-LOC METALLIC
 STRAIGHT MALE - ALL SST**

MOLEX INCORPORATED

DOCUMENT NO. SD-130097-102

SHEET NO. 1 OF 1

THIS DRAWING CONTAINS INFORMATION THAT IS PROPRIETARY TO MOLEX INCORPORATED AND SHOULD NOT BE USED WITHOUT WRITTEN PERMISSION