



Chipsmall Limited consists of a professional team with an average of over 10 year of expertise in the distribution of electronic components. Based in Hongkong, we have already established firm and mutual-benefit business relationships with customers from,Europe,America and south Asia,supplying obsolete and hard-to-find components to meet their specific needs.

With the principle of "Quality Parts,Customers Priority,Honest Operation,and Considerate Service",our business mainly focus on the distribution of electronic components. Line cards we deal with include Microchip,ALPS,ROHM,Xilinx,Pulse,ON,Everlight and Freescale. Main products comprise IC,Modules,Potentiometer,IC Socket,Relay,Connector.Our parts cover such applications as commercial,industrial, and automotives areas.

We are looking forward to setting up business relationship with you and hope to provide you with the best service and solution. Let us make a better world for our industry!



## Contact us

Tel: +86-755-8981 8866 Fax: +86-755-8427 6832

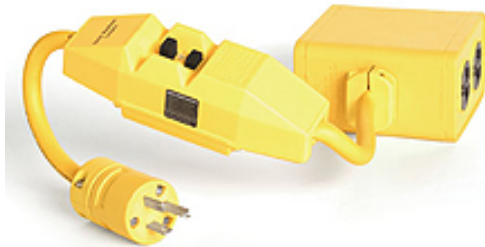
Email & Skype: [info@chipsmall.com](mailto:info@chipsmall.com) Web: [www.chipsmall.com](http://www.chipsmall.com)

Address: A1208, Overseas Decoration Building, #122 Zhenhua RD., Futian, Shenzhen, China



PLEASE CHECK WWW.MOLEX.COM FOR LATEST PART INFORMATION

**Part Number:** 130153-0137  
**Status:** **Active**  
**Overview:** Outlet Boxes  
**Description:** In-Line Commercial GFCI, Manual Reset, Outlet Box, NEMA 5-20 Double Duplex, 15A, 120V, 0.61m Cord Length



Series

image - Reference only

**Documents:**  
[RoHS Certificate of Compliance \(PDF\)](#)

**Agency Certification**

UL E66308

**General**

Product Family	Power Distribution
Series	<u>130153</u>
Enclosure Rating	NEMA 4
GFCI Reset	Manual
Open Neutral Relay	Yes
Overview	<u>Outlet Boxes</u>
Product Name	Woodhead®
Receptacle Type	Duplex
Type	GFCI Commercial Duty
UPC	78678828423
Woodhead	Yes

**Physical**

Cord Diameter	10.92mm (.430")
Cord Grip Body Size	Internal Double C-Clamp
Cord Length	0.61m (2.0' )
Feed-Thru	Yes
Flip Lid	No
Material - Housing	Nylon
Number of Receptacles	2
Packaging Type	Carton

**Electrical**

Cord Type	12/3 SJTW
Current - Maximum per Contact	20A
GFCI	Yes-In-line
Ground Continuity Monitor	No
NEMA Configuration	NEMA 5-20
Voltage - Maximum	240V

**Material Info**

Old Part Number 20053-2

<b>EU RoHS</b>	<b>China RoHS</b>
<b>Compliance Status</b>	
<b>Not Reviewed</b>	
<b>REACH SVHC</b>	
<b>Not Reviewed</b>	
<b>Low-Halogen Status</b>	
<b>Not Reviewed</b>	

**Need more information on product environmental compliance?**  
Email [productcompliance@molex.com](mailto:productcompliance@molex.com)  
For a multiple part number RoHS Certificate of Compliance, [click here](#)

Please visit the [Contact Us](#) section for any non-product compliance questions.

**Search Parts in this Series**  
130153Series

PLEASE CHECK WWW.MOLEX.COM FOR LATEST PART INFORMATION