



Chipsmall Limited consists of a professional team with an average of over 10 year of expertise in the distribution of electronic components. Based in Hongkong, we have already established firm and mutual-benefit business relationships with customers from,Europe,America and south Asia,supplying obsolete and hard-to-find components to meet their specific needs.

With the principle of “Quality Parts,Customers Priority,Honest Operation,and Considerate Service”,our business mainly focus on the distribution of electronic components. Line cards we deal with include Microchip,ALPS,ROHM,Xilinx,Pulse,ON,Everlight and Freescale. Main products comprise IC,Modules,Potentiometer,IC Socket,Relay,Connector.Our parts cover such applications as commercial,industrial, and automotives areas.

We are looking forward to setting up business relationship with you and hope to provide you with the best service and solution. Let us make a better world for our industry!



## Contact us

Tel: +86-755-8981 8866 Fax: +86-755-8427 6832

Email & Skype: info@chipsmall.com Web: www.chipsmall.com

Address: A1208, Overseas Decoration Building, #122 Zhenhua RD., Futian, Shenzhen, China

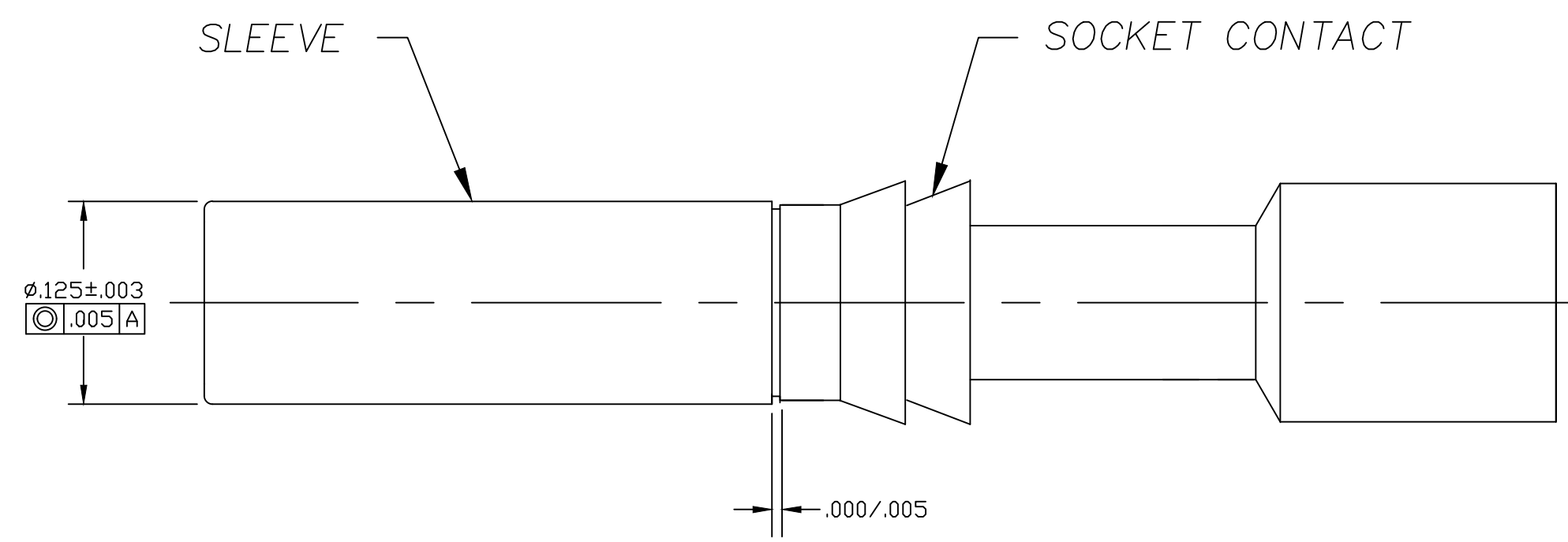
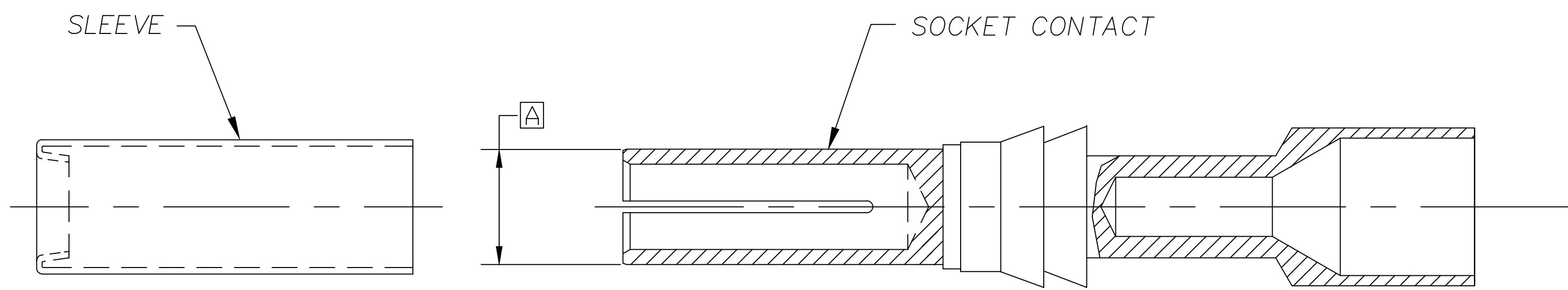


| SUB ASSEMBLY | CONTACT    | DESCRIPTION DESCRIPTION            | SLEEVE     |
|--------------|------------|------------------------------------|------------|
| 1301970389   | 1301970158 | MC PIN/SCKT CONTACT(GRND)          | 1302000039 |
| 1301970390   | 1301970147 | MC PIN/SCKT CONTCT(SIGNAL)         | 1302000039 |
| 1301970391   | 1301970057 | QC SOCKET CONTACT (2-4P 10AWG)     | 1301970004 |
| 1301970392   | 1301970164 | MC QUAD SOCKET 18AWG GOLD          | 1302000039 |
| 1301970393   | 1301970149 | MC SOCKET/PIN CONTACT              | 1302000039 |
| 1301970394   | 1301970383 | MC QUAD SKT 16AWG PLATED SPCL      | 1302000039 |
| 1301970395   | 1301970148 | MC SOCKET/PIN CONTACT              | 1302000039 |
| 1301970396   | 1301970077 | MC QUAD SOCKET 22AWG GOLD          | 1302000039 |
| 1301970397   | 1301970056 | QC SOCKET CONTACT (2-4P 12AWG)     | 1301970004 |
| 1301970399   | 1301970059 | QC SOCKET CONTACT (2-4P 14AWG)     | 1301970004 |
| 1301970400   | 1301970151 | MC TEE PIN/SCKT GND PLATED         | 1302000039 |
| 1301970401   | 1301970069 | MC F-SOCKET CONTACT 14AWG GOLD     | 1302000039 |
| 1301970402   | 1301970169 | MC QUAD TERMINAL 16AWG PLATED      | 1302000039 |
| 1301970403   | 1301970171 | MC QUAD TERMINAL 22AWG PLATED      | 1302000039 |
| 1301970404   | 1301970150 | MC TEE PIN/SCKT SIGNAL PLATED      | 1302000039 |
| 1301970405   | 1301970411 | MC QUAD SOCKET PCB PLATED          | 1302000039 |
| 1301970406   | 1301970168 | MC QUAD TERMINAL 18AWG PHOS BRONZE | 1302000039 |
| 1301970407   | 1301970156 | MC QUAD SOCKET 16AWG GOLD          | 1302000039 |

ⓑ

|  |                      |                |  |   |                                     |                                    |                                     |
|--|----------------------|----------------|--|---|-------------------------------------|------------------------------------|-------------------------------------|
| CONTACT WAS 1301970172<br>EC NO: IPG2018-0306<br>DRWN: CCHRASKT 2017/12/05<br>CH'KD: MZIELINS 2017/05/12<br>APPR: BWOODMAN2016/07/22 | REV DESCRIPTION<br>B | QUALITY SYMBOL | GENERAL TOLERANCES (UNLESS SPECIFIED)  | DIMENSION STYLE   | SCALE                               | DESIGN UNITS                       | THIRD ANGLE PROJECTION              |
|  |                      | ▽=0<br>▽C=0    | mm INCH<br>4 PLACES ±--- ±---<br>3 PLACES ±--- ±---<br>2 PLACES ±--- ±---<br>1 PLACE ±--- ±--- | IN ONLY   | NTS                                 | INCH                               | SOCKET CONTACT SUB-ASSEMBLY<br>---- |
|  |                      |                | ANGULAR ±---°<br>DRAFT WHERE APPLICABLE MUST REMAIN WITHIN DIMENSIONS                          | DRAWN BY DATE<br>CAAVILES 2016/05/03<br>CHECKED BY DATE<br>TWOLDEGE ----<br>APPROVED BY DATE<br>BWOODMAN 2016/07/22 | TITLE                               | MOLEX INCORPORATED<br>E-130197-067 |                                     |
|  |                      |                |  |   | MATERIAL NO.<br>SEE TABLE<br>SIZE C | DOCUMENT NO.<br>E-130197-067       | SHEET NO.<br>1 OF 3                 |

THIS DRAWING CONTAINS INFORMATION THAT IS PROPRIETARY TO MOLEX INCORPORATED AND SHOULD NOT BE USED WITHOUT WRITTEN PERMISSION

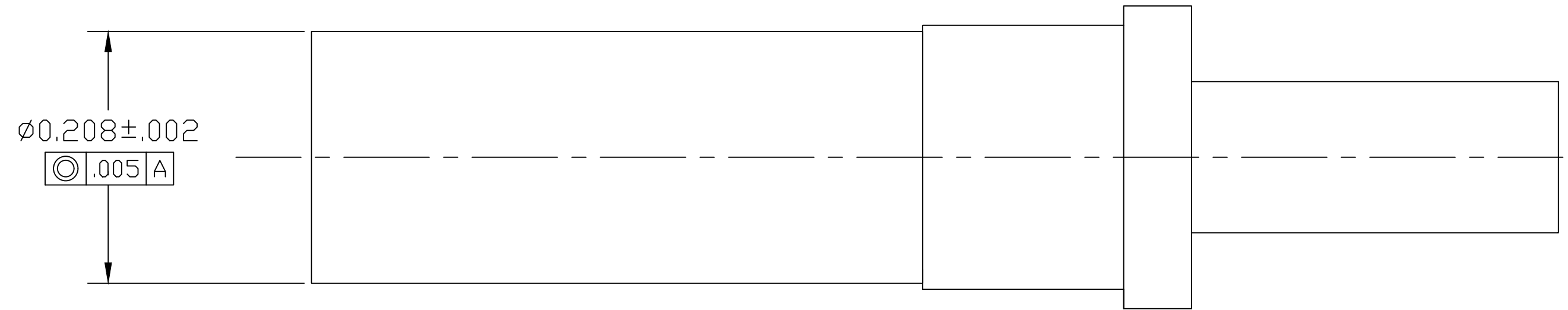
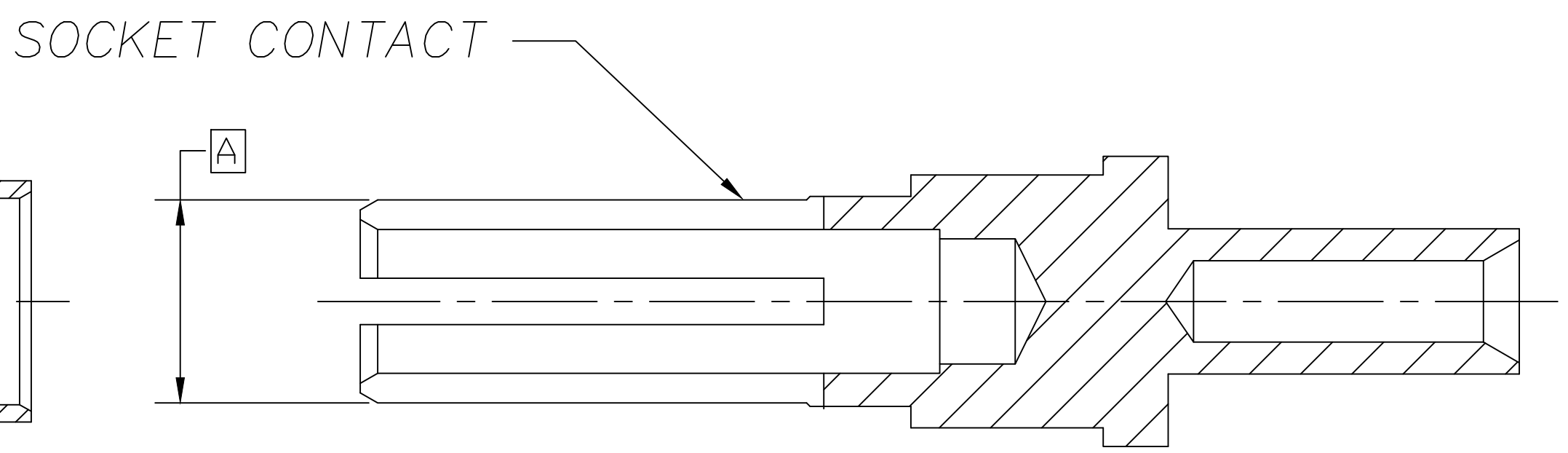
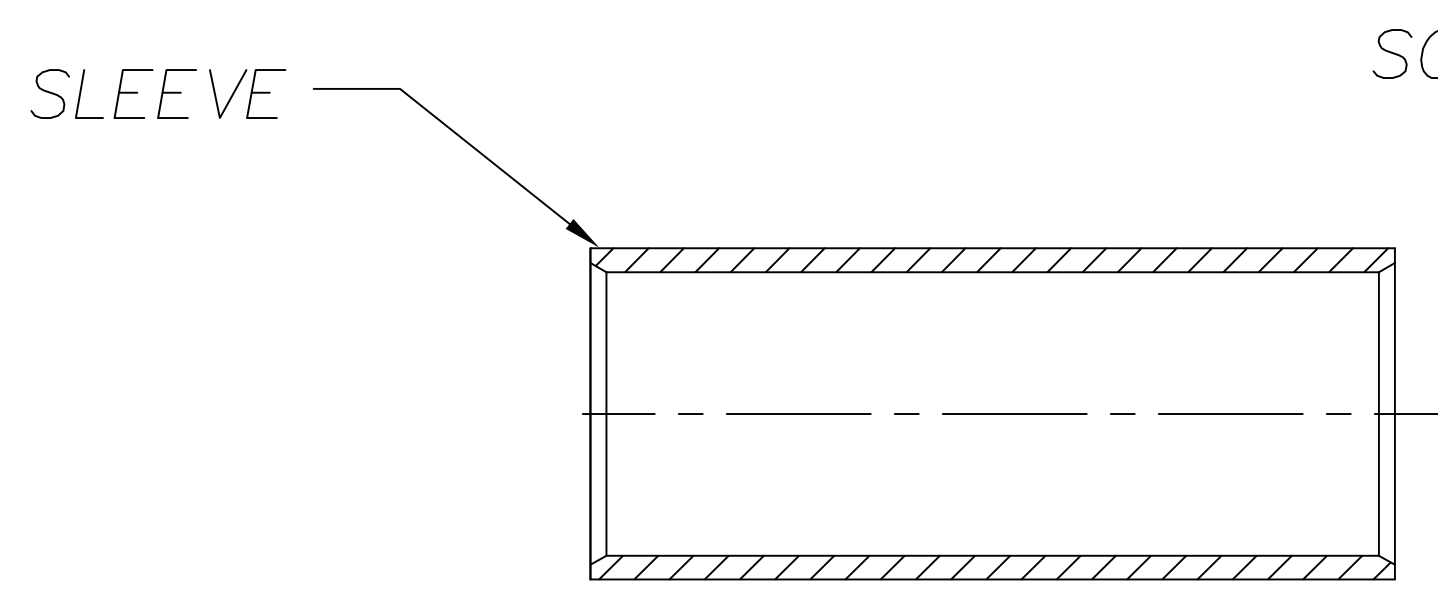


TERMINAL SHOWN IS FOR REFERENCE ONLY, DIMENSIONS APPLY FOR ALL THE ASSEMBLIES THAT REQUIRES SLEEVE 1302000039

NOTES:

1. ASSEMBLE SOCKET CONTACT AND SLEEVE AS SHOWN.
2. SEE SHEET 1 FOR SPECIFIC ASSEMBLY AND PART NUMBERS.
3. SLEEVE/SOCKET INTERFACE MUST WITHSTAND A SEPARATION FORCE OF 150 GRAMS MINIMUM.

|   |     |             |                |                                       |      |                          |                      |   |   |                        |                  |
|---|-----|-------------|----------------|---------------------------------------|------|--------------------------|----------------------|---|---|------------------------|------------------|
| CONTACT WAS 1301970172<br>EC NO: IPG2018-0306<br>DRWN: CCHRASK 2017/12/05<br>CH'KD: MZIELINS 2017/05/12<br>APPR: BWOODMAN2016/07/22 | REV | DESCRIPTION | QUALITY SYMBOL | GENERAL TOLERANCES (UNLESS SPECIFIED) |      | DIMENSION STYLE IN ONLY  |                      | SCALE NTS   | DESIGN UNITS INCH                               | THIRD ANGLE PROJECTION |                  |
|   | B   |             | ▽=0<br>Ⓢ=0     | mm                                    | INCH | DRAWN BY CAAVILES        | DATE 2016/05/03      | TITLE   | SOCKET CONTACT SUB-ASSEMBLY                     |                        |                  |
|   |     |             |                | 4 PLACES                              | ±--- | ±---                     | CHECKED BY TWOLDEGE  | DATE ----   | ---   |                        |                  |
|   |     |             |                | 3 PLACES                              | ±--- | ±---                     | APPROVED BY BWOODMAN | DATE 2016/07/22   | MOLEX INCORPORATED<br>DOCUMENT NO. E-130197-067 |                        | SHEET NO. 2 OF 3 |
|   |     |             | 2 PLACES       | ±---                                  | ±--- | MATERIAL NO. SEE SHEET 1 |                      | THIS DRAWING CONTAINS INFORMATION THAT IS PROPRIETARY TO MOLEX INCORPORATED AND SHOULD NOT BE USED WITHOUT WRITTEN PERMISSION |   |                        |                  |
|   |     |             | 1 PLACE        | ±---                                  | ±--- | ANGULAR ±---°            |                      | DRAFT WHERE APPLICABLE MUST REMAIN WITHIN DIMENSIONS  |   |                        |                  |



NOTES:

1. ASSEMBLE SOCKET CONTACT AND SLEEVE AS SHOWN.
2. SEE SHEET 1 FOR SPECIFIC ASSEMBLY AND PART NUMBERS.
3. SLEEVE/SOCKET INTERFACE MUST WITHSTAND A SEPARATION FORCE OF 150 GRAMS MINIMUM.

TERMINAL SHOWN IS FOR REFERENCE ONLY, DIMENSIONS APPLY FOR ALL THE ASSEMBLIES THAT REQUIRES SLEEVE 1301970004

|  |                      |                |                                       |      |   |            |                           |                             |                        |  |  |  |
|--|----------------------|----------------|---------------------------------------|------|---|------------|---------------------------|-----------------------------|------------------------|--|--|--|
| CONTACT WAS 1301970172<br>EC NO: IPG2018-0306<br>DRWN: CCHRSTK 2017/12/05<br>CH'KD: MZIELINS 2017/05/12<br>APPR: BWOODMAN 2016/07/22 | REV DESCRIPTION<br>B | QUALITY SYMBOL | GENERAL TOLERANCES (UNLESS SPECIFIED) |      | DIMENSION STYLE IN ONLY   |            | SCALE NTS                 | DESIGN UNITS INCH           | THIRD ANGLE PROJECTION |  |  |  |
|  |                      | ▽=0<br>□=0     | mm                                    | INCH | DRAWN BY  | DATE       | TITLE                     |                             |                        |  |  |  |
|  |                      |                | 4 PLACES                              | ±--- | ±---  | CAAVILES   | 2016/05/03                | SOCKET CONTACT SUB-ASSEMBLY |                        |  |  |  |
|  |                      |                | 3 PLACES                              | ±--- | ±---  | CHECKED BY | DATE                      |                             |                        |  |  |  |
| 2 PLACES   | ±---                 | ±---           | TWOLDEGE                              | ---- | MATERIAL NO.  |            |                           |                             |                        |  |  |  |
| 1 PLACE  | ±---                 | ±---           | ANGULAR ±---°                         |      | APPROVED BY   | DATE       | MOLEX INCORPORATED        |                             | SHEET NO.              |  |  |  |
| DRAFT WHERE APPLICABLE MUST REMAIN WITHIN DIMENSIONS   |                      |                | SEE SHEET 1                           |      | BWOODMAN 2016/07/22   |            | DOCUMENT NO. E-130197-067 |                             | 3 OF 3                 |  |  |  |
|  |                      |                | SIZE C                                |      | THIS DRAWING CONTAINS INFORMATION THAT IS PROPRIETARY TO MOLEX INCORPORATED AND SHOULD NOT BE USED WITHOUT WRITTEN PERMISSION |            |                           |                             |                        |  |  |  |